

District I
PO Box 1980, Hobbs, NM 88241-1980

District II
PO Drawer DD, Artesia, NM 88211-0719

District III
1000 Rio Brazos Rd. Aztec, NM 87410

District IV
PO Box 2088, Santa Fe, NM 87504-2088

State of New Mexico
Energy, Minerals & Natural Resources Department

OIL CONSERVATION DIVISION
PO Box 2088
Santa Fe, NM 87504-2088

Form

Revised February 21

Instructions on

Submit to Appropriate District

State Lease - 4 (

Fee Lease - 3 (

☐ AMENDED RE.

WELL LOCATION AND ACREAGE DEDICATION PLAT

API Number 30-025-09252	2 Pool Code 79240	3 Pool Name Jalmat, Tnsi, Yts, 7-Rivers (Pro Gas)
4 Property Code 24669	5 Property Name State 'A' A/C I	6 Well Number 61
7 OGRID No. 162791	8 Operator Name Raptor Resources, Inc.	9 Elevation

10 Surface Location

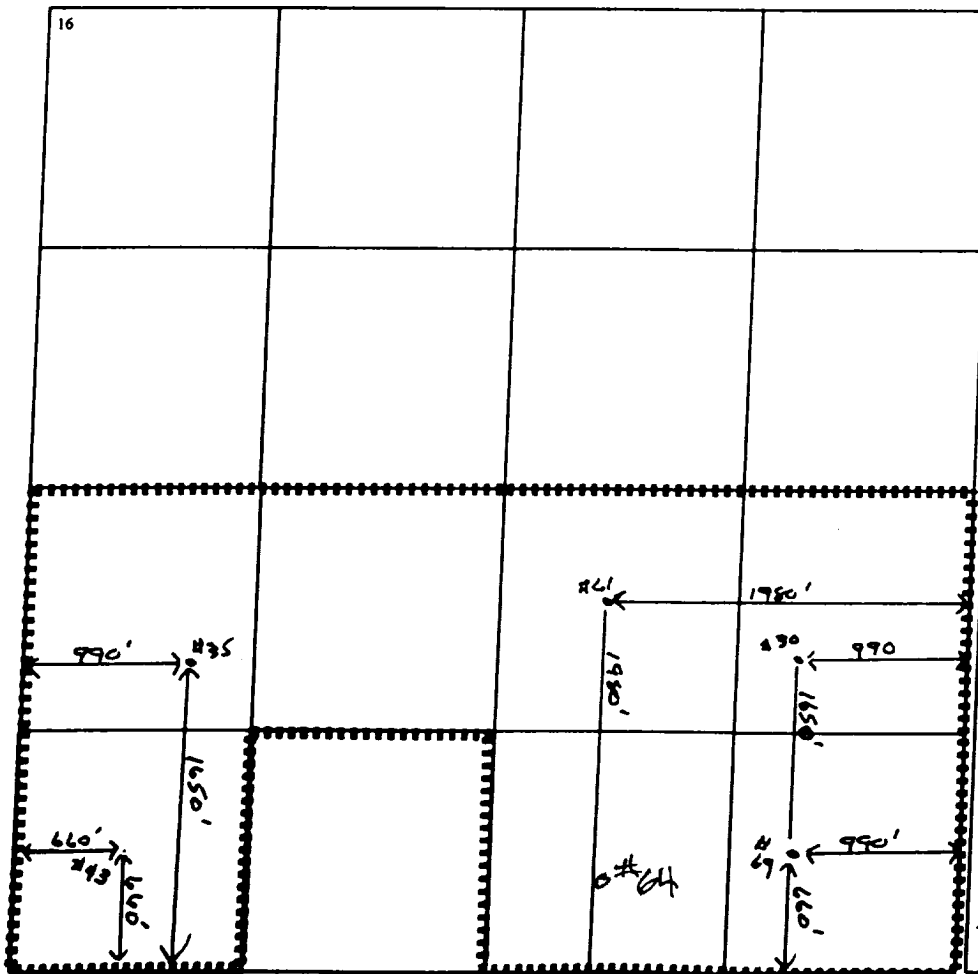
UL or lot no.	Section	Township	Range	Lot Idn	Feet from the	North/South line	Feet from the	East/West line	County
J	3	23S	36E		1980	South	1980	East	Lea

11 Bottom Hole Location If Different From Surface

UL or lot no.	Section	Township	Range	Lot Idn	Feet from the	North/South line	Feet from the	East/West line	County

12 Dedicated Acres 280	13 Joint or Infill	14 Consolidation Code	15 Order No. N5P-1809 <L> <SD>
----------------------------------	--------------------	-----------------------	--

NO ALLOWABLE WILL BE ASSIGNED TO THIS COMPLETION UNTIL ALL INTERESTS HAVE BEEN CONSOLIDATED
OR A NON-STANDARD UNIT HAS BEEN APPROVED BY THE DIVISION



17 OPERATOR CERTIFICATION

I hereby certify that the information contained herein is true and complete to the best of my knowledge and belief.

Bill R. Keathly
Signature

Bill R. Keathly

Printed Name

Regulatory Agent - Raptor

Title

Date

18 SURVEYOR CERTIFICATION

I hereby certify that the well location shown on this plat was plotted from field notes of actual surveys made by me or under my supervision, and that the same is true and correct to the best of my belief.

Date of Survey

Signature and Seal of Professional Surveyor:

Certificate Number

the 1990s, the number of people in the world who are under 15 years of age is expected to increase from 1.1 billion to 1.5 billion. The number of people aged 65 and over is expected to increase from 200 million to 400 million. The number of people aged 15 and over is expected to increase from 3.5 billion to 4.5 billion. The number of people aged 15 and over is expected to increase from 3.5 billion to 4.5 billion. The number of people aged 15 and over is expected to increase from 3.5 billion to 4.5 billion.

