

OIL CONSERVATION DIVISION

P. O. BOX 2088

STATE OF NEW MEXICO
ENERGY AND MINERALS DEPARTMENT

SANTA FE, NEW MEXICO 37501

Form C-102
Revised 10-1-79

All distances must be from the outer boundaries of the Section.

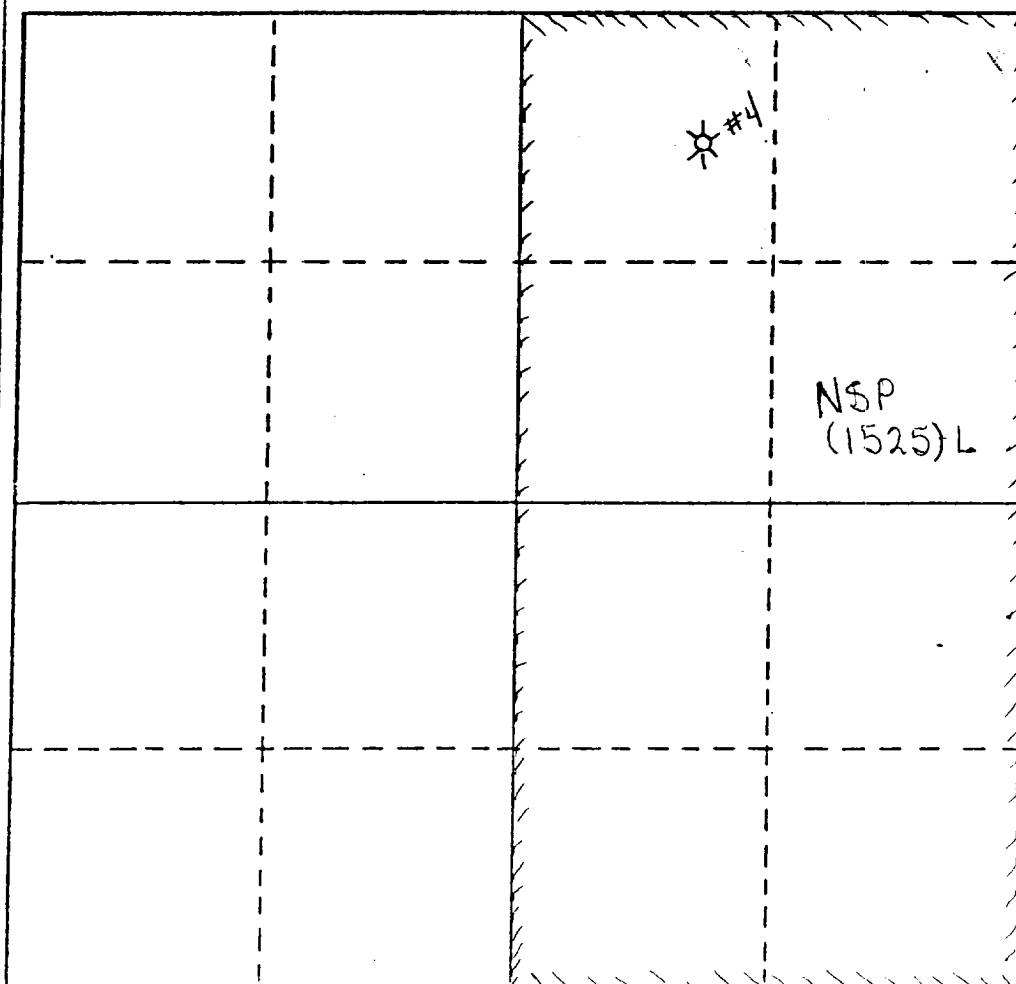
Operator Lewis B. Burleson, Inc.			Lease Farney		Well No. 4
Unit Letter B	Section 5	Township 23-S	Range 36-E	County Lea	
Actual Footage Location of Well: 660 feet from the North line and 1650 feet from the East line					
Ground Level Elev. 320	Producing Formation Yates		Pool Jalmat		Dedicated Acreage: 320 322.76 Acres

1. Outline the acreage dedicated to the subject well by colored pencil or hatchure marks on the plat below.
2. If more than one lease is dedicated to the well, outline each and identify the ownership thereof (both as to working interest and royalty).
3. If more than one lease of different ownership is dedicated to the well, have the interests of all owners been consolidated by communitization, unitization, force-pooling, etc?

☐ Yes ☐ No If answer is "yes," type of consolidation _____

If answer is "no," list the owners and tract descriptions which have actually been consolidated. (Use reverse side of this form if necessary.) _____

No allowable will be assigned to the well until all interests have been consolidated (by communitization, unitization, forced-pooling, or otherwise) or until a non-standard unit, eliminating such interests, has been approved by the Division.



CERTIFICATION

I hereby certify that the information contained herein is true and complete to the best of my knowledge and belief.

Name

Steven Burleson

Position

Vice-President

Company

Lewis B. Burleson, Inc.

Date

2/12/88

I hereby certify that the well location shown on this plat was plotted from field notes of actual surveys made by me or under my supervision, and that the same is true and correct to the best of my knowledge and belief.

Date Surveyed

Registered Land Surveyor

Certificate No.

0 330 660 990 1320 1650 1980 2310 2640 2000 1500 1000 500 0