

Submit to Appropriate  
District Office  
State Lease - 4 copies  
Fee Lease - 3 copies

State of New Mexico  
Energy, Minerals and Natural Resources Department

Form C-102  
Revised 1-1-89

OIL CONSERVATION DIVISION

P.O. Box 2088  
Santa Fe, New Mexico 87504-2088

DISTRICT I  
P.O. Box 1980, Hobbs, NM 88240

DISTRICT II  
P.O. Drawer DD, Artesia, NM 88210

DISTRICT III  
1000 Rio Brazos Rd., Aztec, NM 87410

WELL LOCATION AND ACREAGE DEDICATION PLAT

All Distances must be from the outer boundaries of the section

Operator Hal J. Rasmussen Operating, Inc.			Lease State A A/C 1		Well No. 100
Unit Letter H	Section 9	Township 23 S	Range 36E	County Lea	
Actual Footage Location of Well: 1780 feet from the NORTH line and 990 feet from the EAST line					
Ground level Elev. TANSILL-YATES			Pool Jalmat-TNSL-YTS-7R		Dedicated Acreage: <del>400</del> 520 Acres

- Outline the acreage dedicated to the subject well by colored pencil or hatchure marks on the plat below.
- If more than one lease is dedicated to the well, outline each and identify the ownership thereof (both as to working interest and royalty).
- If more than one lease of different ownership is dedicated to the well, have the interest of all owners been consolidated by communitization, unitization, force-pooling, etc?  
☐ Yes ☐ No If answer is "yes" type of consolidation \_\_\_\_\_  
If answer is "no" list the owners and tract descriptions which have actually been consolidated. (Use reverse side of this form if necessary.)  
No allowable will be assigned to the well until all interests have been consolidated (by communitization, unitization, forced-pooling, or otherwise) or until a non-standard unit, eliminating such interest, has been approved by the Division.

OPERATOR CERTIFICATION

I hereby certify that the information contained herein is true and complete to the best of my knowledge and belief.

Signature

Printed Name

Jay D. Cherski

Position

Agent

Company

Hal J. Rasmussen Operating, Inc.

Date

8/21/90

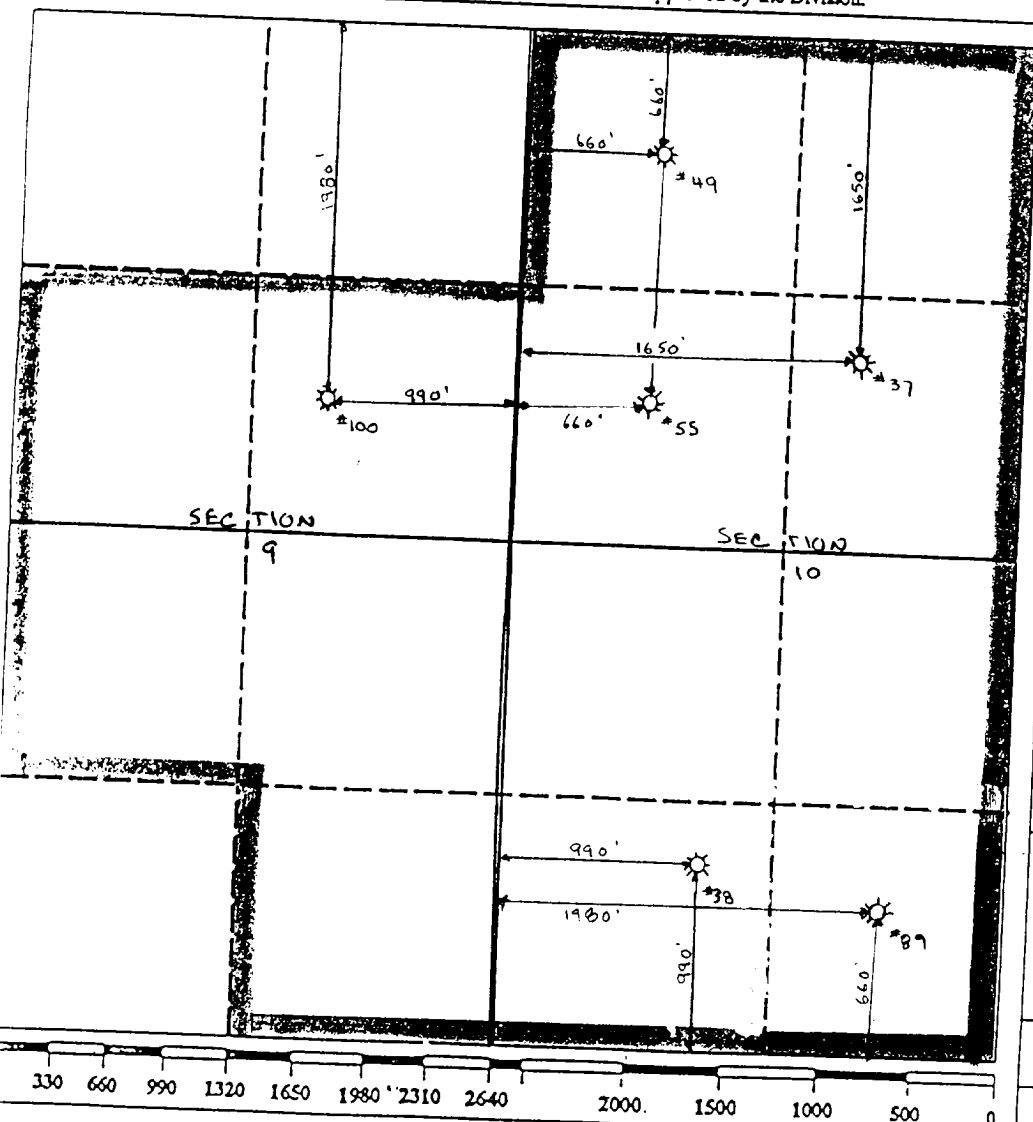
SURVEYOR CERTIFICATION

I hereby certify that the well location shown on this plat was plotted from field notes of actual surveys made by me or under my supervision, and that the same is true and correct to the best of my knowledge and belief.

Date Surveyed

Signature & Seal of  
Professional Surveyor

Certificate No.



**NEW MEXICO OIL CONSERVATION COMMISSION  
WELL LOCATION AND ACRFAGE DEDICATION PLAT**

Form C 102  
Supersedes C-128  
Effective 1-4-65

All distances must be from the outer boundaries of the Section.

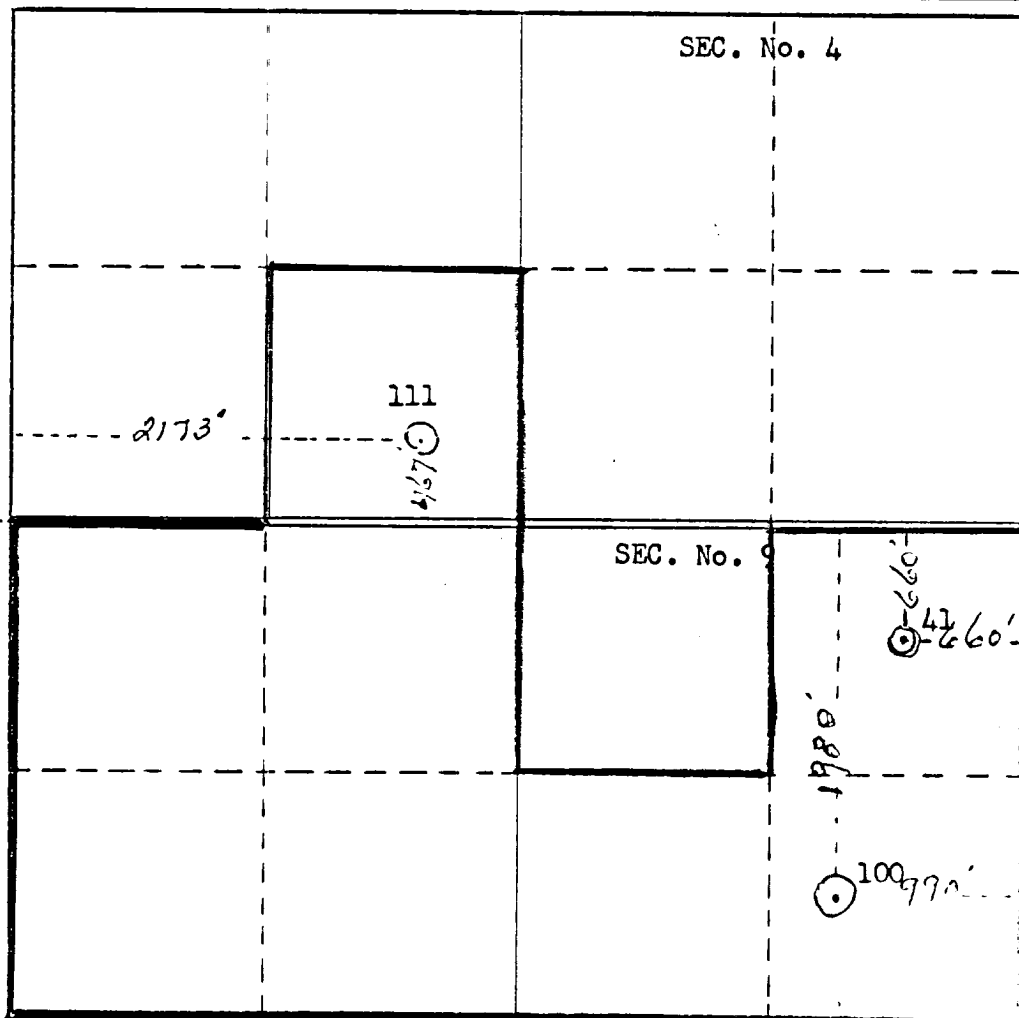
Operator <b>Texas Pacific Oil Company Inc.</b>			Lease <b>State "A" A/C-1</b>		Well No. <b>100</b>
Unit Letter <b>H</b>	Section <b>9</b>	Township <b>23-S</b>	Range <b>36-E</b>	County <b>Lea</b>	
Actual Footage Location of Well: <div style="display: flex; justify-content: space-between;"> <span>1980 feet from the North line and</span> <span>990 feet from the East line</span> </div>					
Ground Level Elev. <b>3471' GR.</b>	Producing Formation <b>Yates G s</b>	Pool <b>Jalpat</b>	Dedicated Acreage: <b>320</b> Acres		

1. Outline the acreage dedicated to the subject well by colored pencil or hatchure marks on the plat below.
2. If more than one lease is dedicated to the well, outline each and identify the ownership thereof (both as to working interest and royalty).
3. If more than one lease of different ownership is dedicated to the well, have the interests of all owners been consolidated by communitization, unitization, force-pooling, etc?

☐ Yes    ☐ No    If answer is "yes," type of consolidation \_\_\_\_\_

If answer is "no," list the owners and tract descriptions which have actually been consolidated. (Use reverse side of this form if necessary.) \_\_\_\_\_

No allowable will be assigned to the well until all interests have been consolidated (by communitization, unitization, forced-pooling, or otherwise) or until a non-standard unit, eliminating such interests, has been approved by the Commission.  
R-4484



**CERTIFICATION**

*I hereby certify that the information contained herein is true and complete to the best of my knowledge and belief.*

*C. F. Aubert, Jr.*  
Name  
**C. F. Aubert, Jr.**

Position  
**Area Superintendent**

Company  
**Texas Pacific Oil Company Inc.**

Date  
**3-6-73**

*I hereby certify that the well location shown on this plat was plotted from field notes of actual surveys made by me or under my supervision, and that the same is true and correct to the best of my knowledge and belief.*

Date Surveyed \_\_\_\_\_

Registered Professional Engineer and/or Land Surveyor \_\_\_\_\_

Certificate No. \_\_\_\_\_

330 660 990 1320 1650 1980 2310 2640 2000 1800 1600 1400 1200 1000 800 0

**NEW MEXICO OIL CONSERVATION COMMISSION  
WELL LOCATION AND ACREAGE DEDICATION PLAT**

Form C-102  
Supersedes C-128  
Effective 1-1-65

All distances must be from the outer boundaries of the Section.

Operator <b>Texas Pacific Oil Company</b>			Lease <b>State "A" A/C-11167</b>		Well No. <b>41 &amp; 100</b>
Unit Letter <b>41-A, 100-H</b>	Section <b>9</b>	Township <b>23-S</b>	Range <b>36-E</b>	County <b>Lea</b>	
Actual Foot Location of Well: <b>100 - 1980</b>		<b>N</b>	<b>660</b>	<b>E</b>	
		feet from the <b>N</b>	line and <b>990</b>	feet from the <b>E</b>	line
Ground Level Elev: <b>41 - 3490</b> <b>100 - 3471</b>	Producing Formation <b>Yates</b>		Pool <b>Jalmat Gas</b>		Dedicated Acreage: <b>280</b> Acres

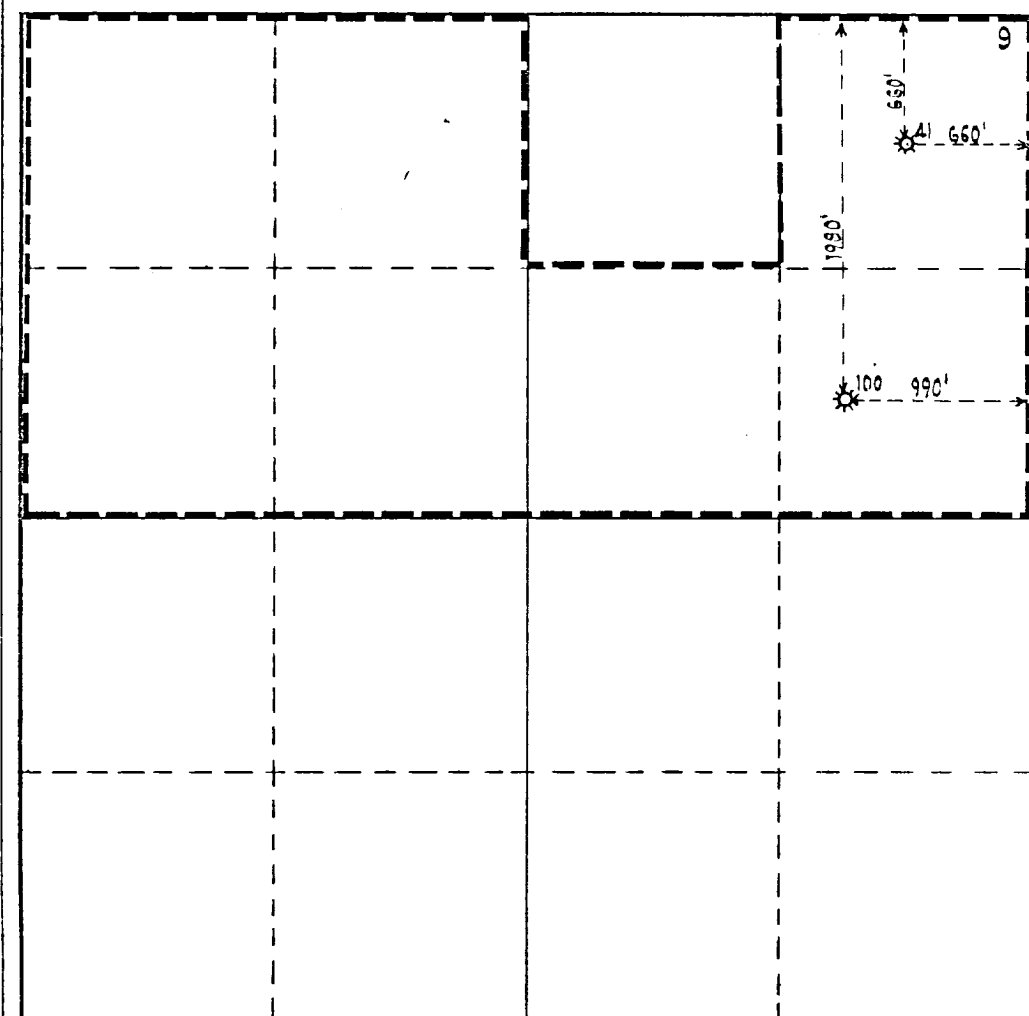
1. Outline the acreage dedicated to the subject well by colored pencil or hachure marks on the plat below.
2. If more than one lease is dedicated to the well, outline each and identify the ownership thereof (both as to working interest and royalty).
3. If more than one lease of different ownership is dedicated to the well, have the interests of all owners been consolidated by communitization, unitization, force-pooling, etc?

☐ Yes    ☐ No    If answer is "yes," type of consolidation \_\_\_\_\_

If answer is "no," list the owners and tract descriptions which have actually been consolidated. (Use reverse side of this form if necessary.) \_\_\_\_\_

No allowable will be assigned to the well until all interests have been consolidated (by communitization, unitization, forced-pooling, or otherwise) or until a non-standard unit, eliminating such interests, has been approved by the Commission.

Approved March 30, 1967    R-3209



**CERTIFICATION**

I hereby certify that the information contained herein is true and complete to the best of my knowledge and belief.

*E. J. Smith*

Name  
**Dist. Adm. Supv.**

Position  
**Texas Pacific Oil Company**

Company  
**May 5, 1967**

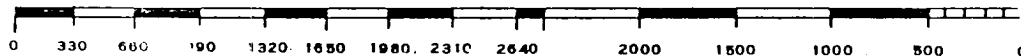
Date

I hereby certify that the well location shown on this plat was plotted from field notes of actual surveys made by me or under my supervision, and that the same is true and correct to the best of my knowledge and belief.

Date Surveyed

Registered Professional Engineer and/or Land Surveyor

Certificate No.



MN 09279

COUNTY IEA FIELD Jalmat-Langlie Mattie STATE NM OWWO

OPR TEXAS PACIFIC OIL CO., INC. MAP

100 State "A" A/C-1

Sec 9, T-23-S, R-36-E

1980' FNL, 990' FEL of Sec.

		CLASS		OWWOF EL 3484E	
Re-Cmp 7-15-69		FORMATION	DATUM	FORMATION	DATUM
CSG & SX - TUBING 9 5/8" at 318' w/300 sx 7" at 3705' w/250 sx					
LOGS EL GP RA INE IC A					
		TD 3760'	PBD 3698'		

IP (Yates) Perfs 3191-3452' CAOF 1332 MCF/CPD; COR dry, (Grav  
(gas) .670, SIWHP 412#.

(Seven Rivers) Perfs 3638-90' NO NEW POTENTIAL.

Distribution limited and publication prohibited by association agreement.  
Reproduction rights reserved by Williams & Lee Sealing Service, Inc.

CONT. PROD DEPTH 3690' TYPE WO  
DATE

7-7-70

P.R.C. 7-9-70; Opr 2 Elev 3484 DP  
PI 3690' - WO - Yates-Seven Rivers  
(Orig. Texas Pacific Coal & Oil Co.  
cmp 12-14-60 from OH 3705-60', OTD 3705')  
TD 3760', PBD 3698', COMPLETE  
Set retainer @ 3698  
Sqzd (3705-60')  
Perf @ 3638', 3641', 3643', 3644', 3645',  
3668', 3670', 3672', 3674', 3686', 3688',  
3689', 3690' w/2 SPI  
Acid (3638-90') 1000 gals  
Frac (3638-90') 15,000 gals wtr + 25,000# sd  
Perf @ 3191', 3198', 3211', 3224', 3234',  
3243', 3264', 3286', 3296', 3314', 3328',  
3339', 3352', 3365', 3380', 3388', 3445',  
3447', 3449', 3452' w/1 SPI

7-7-70

Continued

Acid (3191-3452') 1000 gals

Frac (3191-3452') 20,000 gals wtr +  
35,000# sd

(YATES) FOUR POINT GAUGES:

Flwd 373 MCFGPD thru 1.000" orifice, 1 hr,  
TP 390#

Flwd 457 MCFGPD thru 1.000" orifice, 1 hr,  
TP 360#

Flwd 497 MCFGPD thru 1.000" orifice, 1 hr,  
TP 320#

Flwd 622 MCFGPD thru 1.000" orifice, 1 hr,  
TP 297#

7-9-70

COMPLETION REPORTED