

District I
1625 N. French Dr., Hobbs. NM 88240

State of New Mexico
Energy, Minerals & Natural Resources Department

Revised February 21, 1994
instructions on back

District II
PO Drawer DD, Artesia, NM 88211-0719

OIL CONSERVATION DIVISION

Submit to Appropriate District Office

District III
1000 Rio Brazos Rd. Aztec, NM 87410

PO Box 2088

State Lease - 4 Copies

District IV
PO Box 2088, Santa Fe. NM 87504-2088

Santa Fe, NM 87504-2088

Fee Lease - 3 Copies

☐ AMENDED REPORT

WELL LOCATION AND ACREAGE DEDICATION PLAT

API Number <i>30-025-09298</i>		2 Pool Code <i>79240</i>		3 Pool Name <i>Jalmat. Tam-Yates-7 Runs (Pro Gas)</i>	
4 Property Code <i>24669</i>		5 Property Name <i>State A A/C 1</i>			6 Well Number <i>89</i>
7 OGRID No. <i>162791</i>		8 Operator Name <i>Raptor Resources</i>			9 Elevation

10 Surface Location

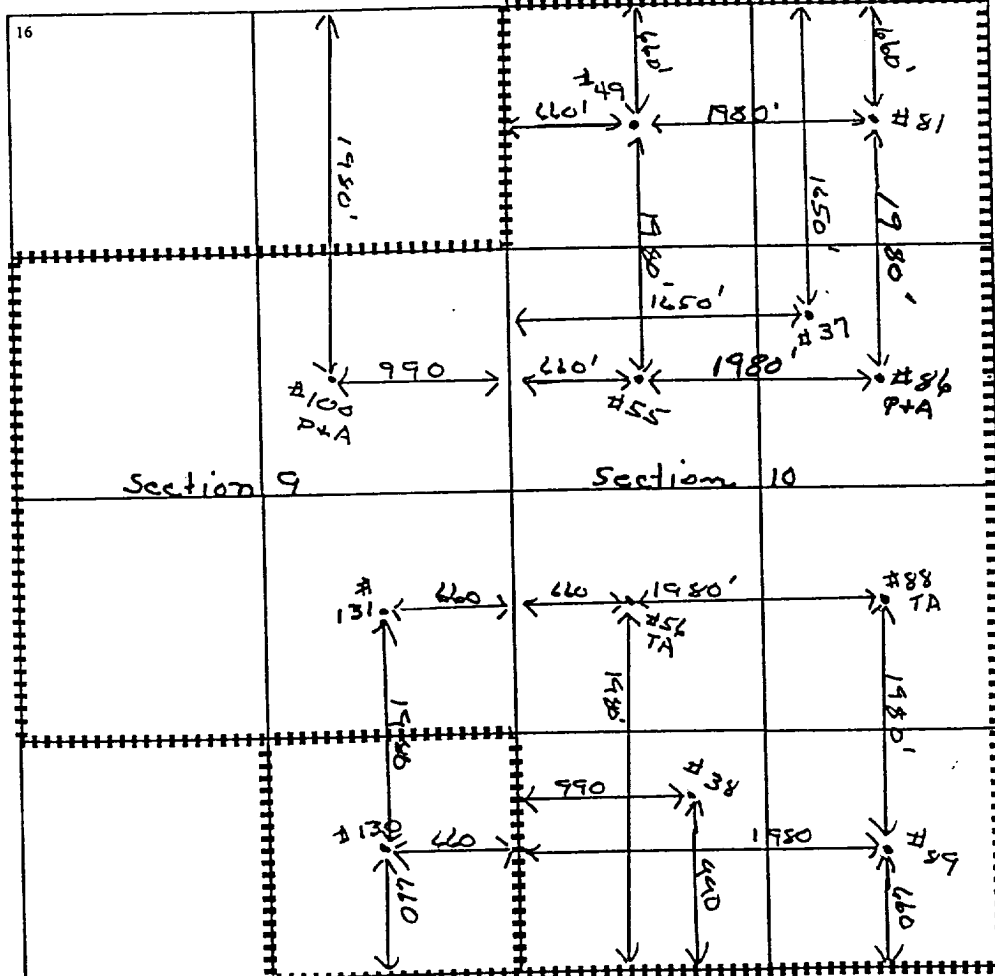
UL or lot no.	Section	Township	Range	Lot Idn	Feet from the	North/South line	Feet from the	East/West line	County
<i>N</i>	<i>10</i>	<i>23S</i>	<i>36E</i>		<i>660</i>	<i>South</i>	<i>1980</i>	<i>West</i>	<i>Lea</i>

11 Bottom Hole Location If Different From Surface

UL or lot no.	Section	Township	Range	Lot Idn	Feet from the	North/South line	Feet from the	East/West line	County

12 Dedicated Acres <i>480</i>	13 Joint or Infill	14 Consolidation Code	15 Order No. <i>NSP-1862 (SD)</i>
----------------------------------	--------------------	-----------------------	--------------------------------------

NO ALLOWABLE WILL BE ASSIGNED TO THIS COMPLETION UNTIL ALL INTERESTS HAVE BEEN CONSOLIDATED
OR A NON-STANDARD UNIT HAS BEEN APPROVED BY THE DIVISION



17 OPERATOR CERTIFICATION

I hereby certify that the information contained herein is true and complete to the best of my knowledge and belief

Bill R. Keathly
Signature

Bill R. Keathly

Printed Name
Regulatory Agent

Title
1-16-03

Date

18 SURVEYOR CERTIFICATION

I hereby certify that the well location shown on this plat was plotted from field notes of actual surveys made by me or under my supervision, and that the same is true and correct to the best of my belief.

Date of Survey
Signature and Seal of Professional Surveyor:

Certificate Number