

District I  
1625 N. French Dr., Hobbs. NM 88240

State of New Mexico  
Energy, Minerals & Natural Resources Department

Revised February 21, 1994  
instructions on back

District II  
PO Drawer DD, Artesia, NM 88211-0719

OIL CONSERVATION DIVISION  
PO Box 2088  
Santa Fe, NM 87504-2088

Submit to Appropriate District Office  
State Lease - 4 Copies  
Fee Lease - 3 Copies

District III  
1000 Rio Brazos Rd. Aztec, NM 87410

District IV  
PO Box 2088, Santa Fe. NM 87504-2088

☐ AMENDED REPORT

### WELL LOCATION AND ACREAGE DEDICATION PLAT

API Number 30-025- 09356		2 Pool Code 79240		3 Pool Name Jalmat: Tan-Yates-7 rvrs (Pro Gas)	
4 Property Code 24669		5 Property Name State "A" A/C 1			
7 OGRID No. 162791		8 Operator Name Raptor Resources			
		6 Well Number 28			
		9 Elevation			

#### 10 Surface Location

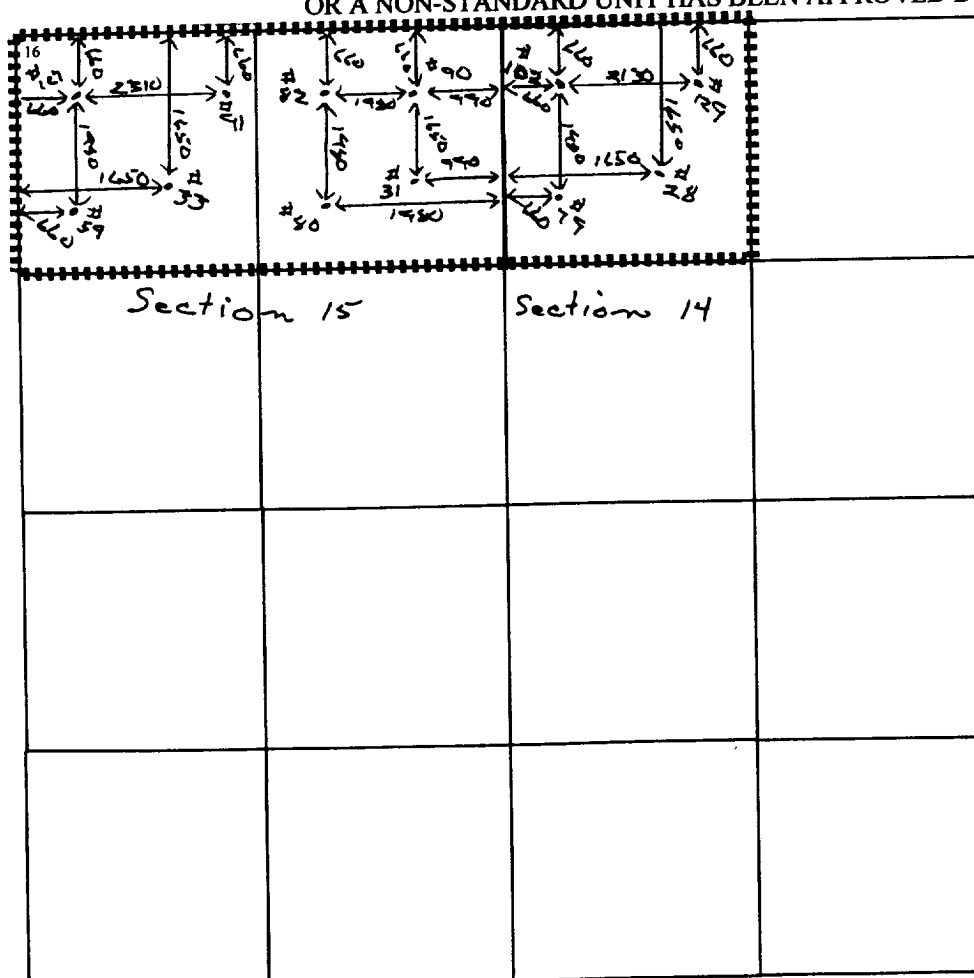
UL or lot no.	Section	Township	Range	Lot Idn	Feet from the	North/South line	Feet from the	East/West line	County
F	14	23S	36E		1650	North	1650	West	Lea

#### 11 Bottom Hole Location If Different From Surface

UL or lot no.	Section	Township	Range	Lot Idn	Feet from the	North/South line	Feet from the	East/West line	County

12 Dedicated Acres 480	13 Joint or Infill	14 Consolidation Code	15 Order No.
---------------------------	--------------------	-----------------------	--------------

NO ALLOWABLE WILL BE ASSIGNED TO THIS COMPLETION UNTIL ALL INTERESTS HAVE BEEN CONSOLIDATED  
OR A NON-STANDARD UNIT HAS BEEN APPROVED BY THE DIVISION



#### 17 OPERATOR CERTIFICATION

I hereby certify that the information contained herein is true and complete to the best of my knowledge and belief

*Bill R. Keathly*

Signature

Bill R. Keathly

Printed Name

Regulatory Agent

Title

5-8-00

Date

#### 18 SURVEYOR CERTIFICATION

I hereby certify that the well location shown on this plat was plotted from field notes of actual surveys made by me or under my supervision, and that the same is true and correct to the best of my belief.

Date of Survey

Signature and Seal of Professional Surveyor:

Certificate Number

District I  
PO Box 1980, Hobbs, NM 88241-1980  
District II  
PO Drawer DD, Artesia, NM 88211-0719  
District III  
1000 Rio Brazos Rd. Aztec, NM 87410  
District IV  
PO Box 2088, Santa Fe, NM 87504-2088

State of New Mexico  
Energy, Minerals & Natural Resources Department

OIL CONSERVATION DIVISION  
PO Box 2088  
Santa Fe, NM 87504-2088

Revised February 21, 1991  
Instructions on back

Submit to Appropriate District Office  
State Lease - 4 Copies  
Fee Lease - 3 Copies

☐ AMENDED REPORT

### WELL LOCATION AND ACREAGE DEDICATION PLAT

API Number 30-025-09356		2 Pool Code 79240		3 Pool Name Jalmat, TnsL, Yts, 7-Rivers (Pro Gas)	
4 Property Code 24669		5 Property Name State 'A' A/C 1			
7 OGRID No. 162791		8 Operator Name Raptor Resources, Inc.			
6 Well Number 28					
9 Elevation					

#### 10 Surface Location

UL or lot no.	Section	Township	Range	Lot Idn	Feet from the	North/South line	Feet from the	East/West line	County
F	14	23S	36E		1650	North	1650	West	Lea

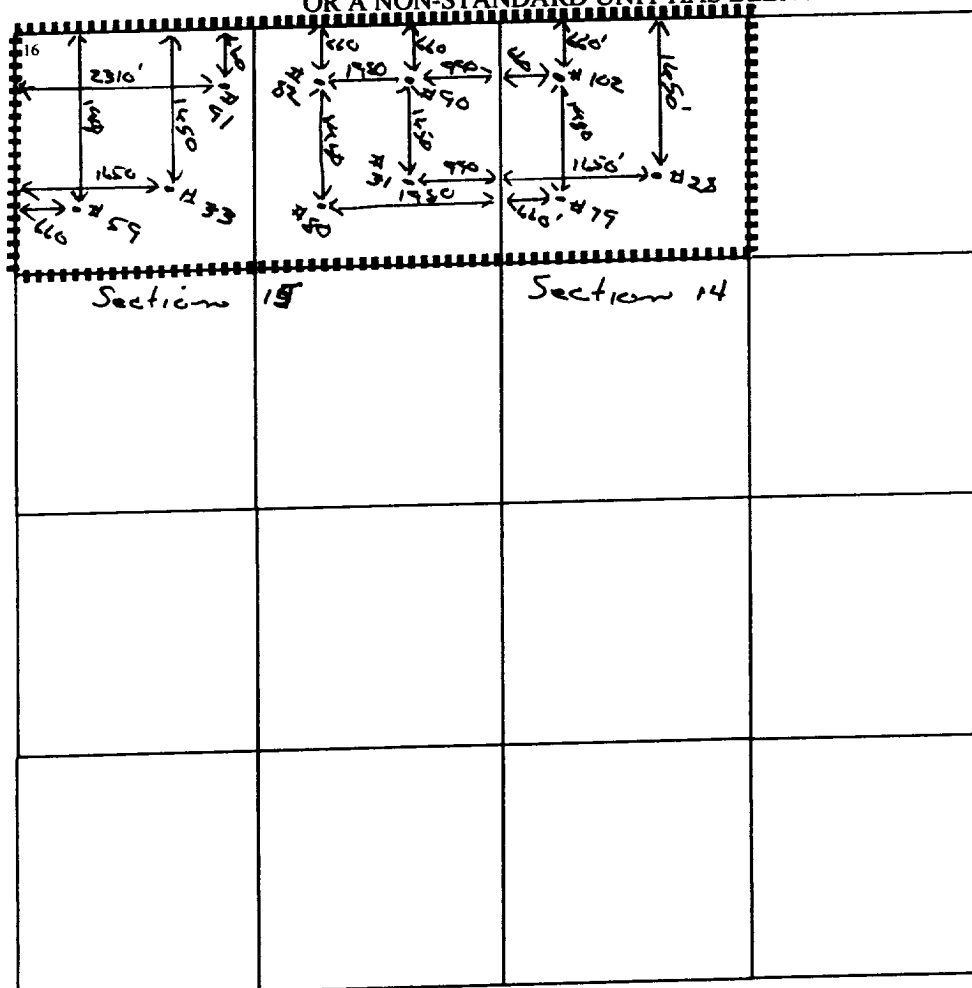
#### 11 Bottom Hole Location If Different From Surface

UL or lot no.	Section	Township	Range	Lot Idn	Feet from the	North/South line	Feet from the	East/West line	County

12 Dedicated Acres 480	13 Joint or Infill	14 Consolidation Code	15 Order No.
---------------------------	--------------------	-----------------------	--------------

Applied For

NO ALLOWABLE WILL BE ASSIGNED TO THIS COMPLETION UNTIL ALL INTERESTS HAVE BEEN CONSOLIDATED  
OR A NON-STANDARD UNIT HAS BEEN APPROVED BY THE DIVISION



#### 17 OPERATOR CERTIFICATION

I hereby certify that the information contained herein is true and complete to the best of my knowledge and belief

*Bill R. Keathly*

Signature

Bill R. Keathly

Printed Name

Regulatory Agent - Raptor

Title

11-18-99

Date

#### 18 SURVEYOR CERTIFICATION

I hereby certify that the well location shown on this plat was plotted from field notes of actual surveys made by me or under my supervision, and that the same is true and correct to the best of my belief.

Date of Survey

Signature and Seal of Professional Surveyor:

Certificate Number

Submit to Appropriate  
District Office  
State Lease - 4 copies  
For Lease - 3 copies

State of New Mexico  
Energy, Minerals and Natural Resources Department

Form C-102  
Revised 1-1-89

OIL CONSERVATION DIVISION  
P.O. Box 2088  
Santa Fe, New Mexico 87504-2088

DISTRICT I  
P.O. Box 1980, Hobbs, NM 88240

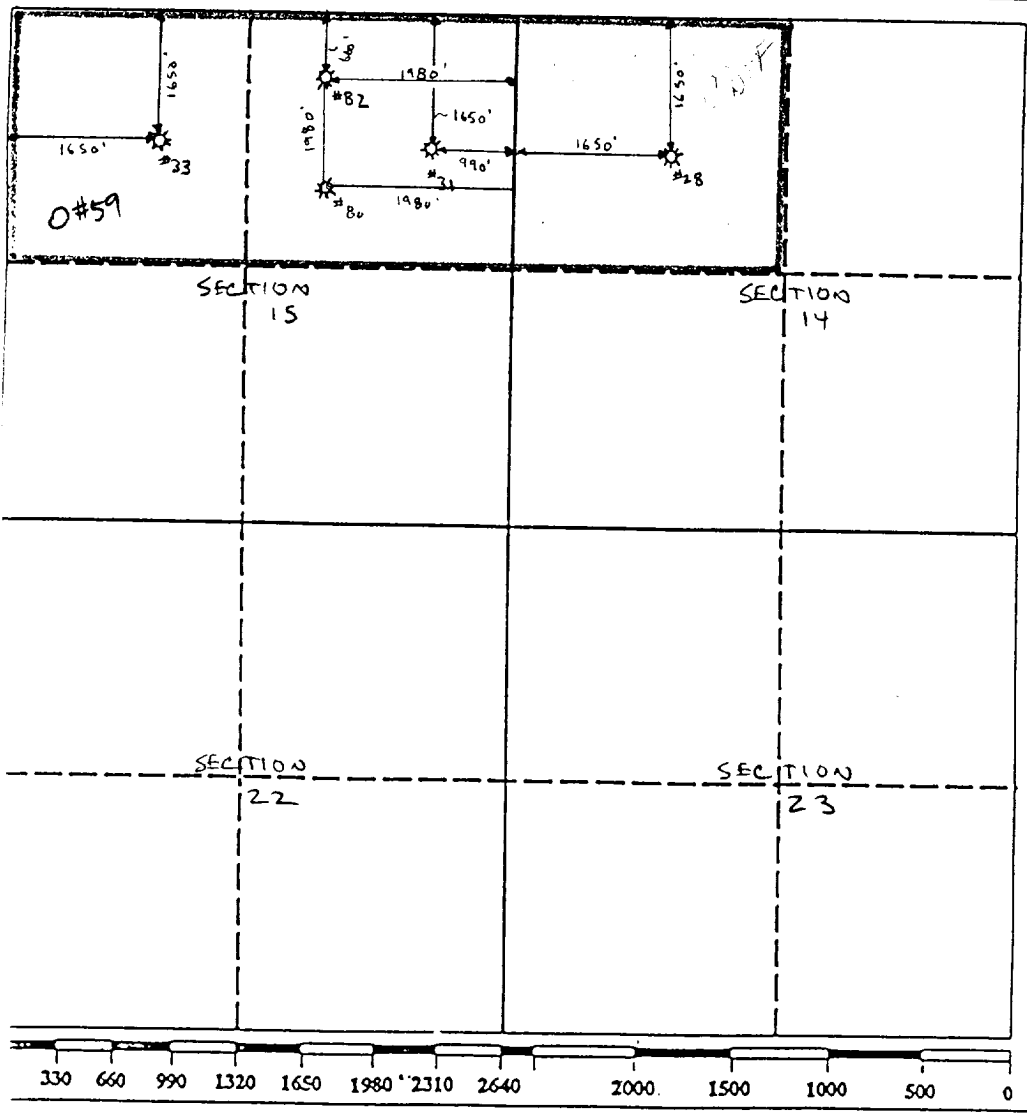
DISTRICT II  
P.O. Drawer DD, Artesia, NM 88210

DISTRICT III  
1000 Rio Brazos Rd., Aztec, NM 87410

WELL LOCATION AND ACREAGE DEDICATION PLAT  
All Distances must be from the outer boundaries of the section

Operator Hal J. Rasmussen Operating, Inc.			Lease 		Well No. 28
Unit Letter F	Section 14	Township 23 S	Range 36E	County Lea	
Actual Footage Location of Well: 1650 feet from the NORTH line and 1650 feet from the WEST line					
Ground level Elev.	Producing Formation TANBILL-VATES	Pool Jalmat-TNSL-YTS-7R	Dedicated Acreage: 480 Acres		

1. Outline the acreage dedicated to the subject well by colored pencil or hatchure marks on the plat below.
2. If more than one lease is dedicated to the well, outline each and identify the ownership thereof (both as to working interest and royalty).
3. If more than one lease of different ownership is dedicated to the well, have the interest of all owners been consolidated by communitization, unitization, force-pooling, etc?  
☐ Yes ☐ No If answer is "yes" type of consolidation \_\_\_\_\_  
If answer is "no" list the owners and tract descriptions which have actually been consolidated. (Use reverse side of this form if necessary.) \_\_\_\_\_  
No allowable will be assigned to the well until all interests have been consolidated (by communitization, unitization, forced-pooling, or otherwise) or until a non-standard unit, eliminating such interest, has been approved by the Division.



**OPERATOR CERTIFICATION**  
I hereby certify that the information contained herein in true and complete to the best of my knowledge and belief.

Signature

Printed Name  
Jay D. Cherski

Position  
Agent

Company  
Hal J. Rasmussen Operating, Inc.

Date

**SURVEYOR CERTIFICATION**  
I hereby certify that the well location shown on this plat was plotted from field notes of actual surveys made by me or under my supervision, and that the same is true and correct to the best of my knowledge and belief.

Date Surveyed

Signature & Seal of Professional Surveyor

Certificate No.

## OIL CONSERVATION DIVISION

P.O. Box 2088  
Santa Fe, New Mexico 87504-2088

DISTRICT I  
P.O. Box 1980, Hobbs, NM 88240

DISTRICT II  
P.O. Drawer DD, Artesia, NM 88210

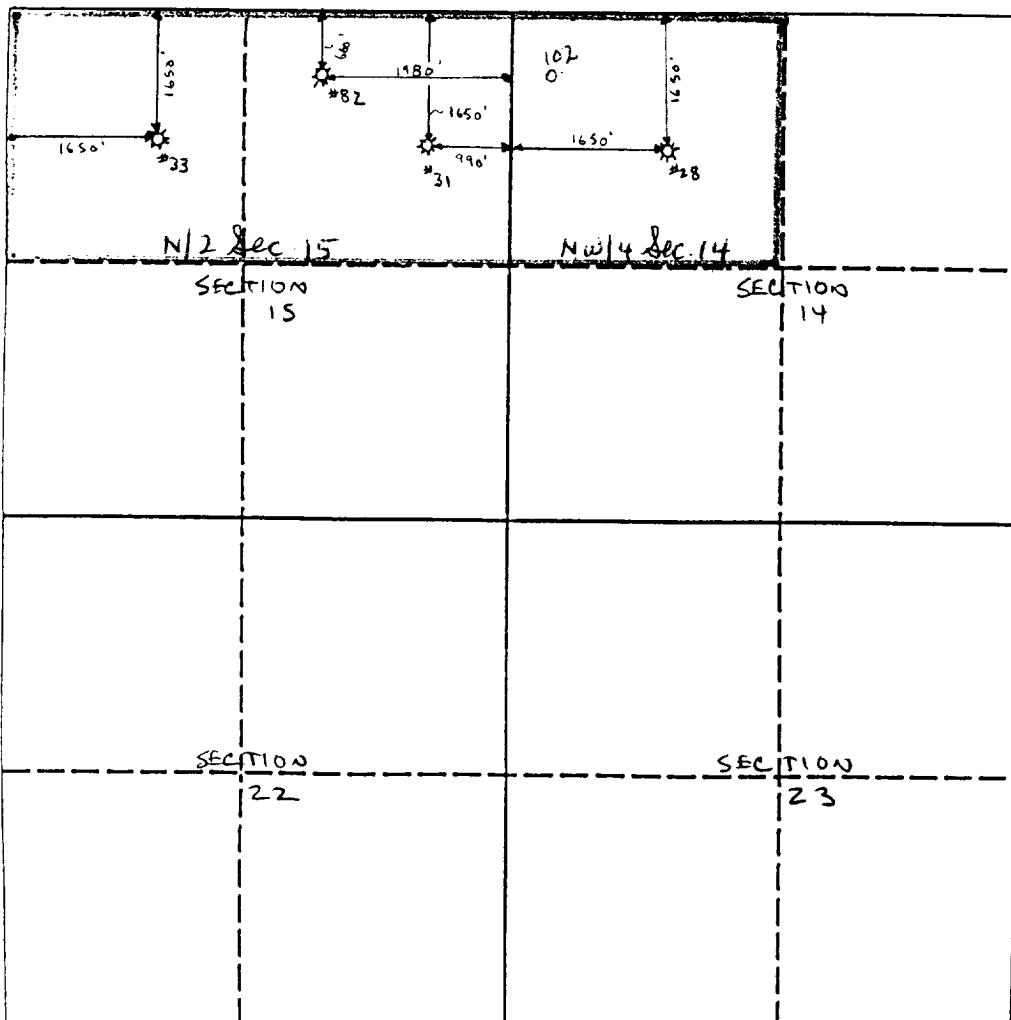
DISTRICT III  
1000 Rio Brazos Rd., Aztec, NM 87410

## WELL LOCATION AND ACREAGE DEDICATION PLAT

All Distances must be from the outer boundaries of the section

Operator Hal J. Rasmussen Operating, Inc.		Lease State A A/C 1		Well No. 28
Unit Letter F	Section 14	Township 23 S	Range 36E	County Lea
Actual Footage Location of Well: 1650 feet from the NORTH line and 1650 feet from the WEST line				
Ground level Elev.	Producing Formation TANSILL-YATES	Pool Jalmat-TNSL-YTS-7R	Dedicated Acreage: 480 Acres	

1. Outline the acreage dedicated to the subject well by colored pencil or hatchure marks on the plat below.
2. If more than one lease is dedicated to the well, outline each and identify the ownership thereof (both as to working interest and royalty).
3. If more than one lease of different ownership is dedicated to the well, have the interest of all owners been consolidated by communitization, unitization, force-pooling, etc.?
- ☐ Yes      ☐ No      If answer is "yes" type of consolidation \_\_\_\_\_
- If answer is "no" list the owners and tract descriptions which have actually been consolidated. (Use reverse side of this form if necessary. \_\_\_\_\_)
- No allowable will be assigned to the well until all interests have been consolidated (by communitization, unitization, forced-pooling, or otherwise) or until a non-standard unit, eliminating such interest, has been approved by the Division.



### OPERATOR CERTIFICATION

I hereby certify that the information contained herein is true and complete to the best of my knowledge and belief.

Signature \_\_\_\_\_

Printed Name

Jay D. Cherski

Position

Agent

Сотрапу

Hal J. Rasmussen Operating, Inc.

Date \_\_\_\_\_

120/90

### SURVEYOR CERTIFICATION

I hereby certify that the well location shown on this plat was plotted from field notes of actual surveys made by me or under my supervision, and that the same is true and correct to the best of my knowledge and belief.

Date Surveyed \_\_\_\_\_

Signature & Seal of  
Professional Surveyor

Certificate No.

**NEW MEXICO OIL CONSERVATION COMMISSION  
WELL LOCATION AND ACREAGE DEDICATION PLAT**

Form C-102  
Supersedes C-128  
Effective 1-1-65

All distances must be from the outer boundaries of the Section.

Operator <b>TEXAS PACIFIC OIL CO., INC.</b>			Lease <b>State "A" A/c-1</b>		Well No. <b>28</b>
Unit Letter <b>F</b>	Section <b>14</b>	Township <b>23</b>	Range <b>36</b>	County <b>Lea</b>	
Actual Footage Location of Well:					
<b>1650</b> feet from the <b>North</b> line and		<b>1650</b> feet from the <b>West</b> line			
Ground Level Elev. <b>3400' DF</b>	Producing Formation <b>Yates</b>	Pool <b>Jalmat Gas</b>		Dedicated Acreage: <b>240</b> Acres	

1. Outline the acreage dedicated to the subject well by colored pencil or hatchure marks on the plat below.
2. If more than one lease is dedicated to the well, outline each and identify the ownership thereof (both as to working interest and royalty).
3. If more than one lease of different ownership is dedicated to the well, have the interests of all owners been consolidated by communitization, unitization, force-pooling, etc?

☐ Yes    ☐ No    If answer is "yes," type of consolidation \_\_\_\_\_

If answer is "no," list the owners and tract descriptions which have actually been consolidated. (Use reverse side of this form if necessary.) \_\_\_\_\_

No allowable will be assigned to the well until all interests have been consolidated (by communitization, unitization, forced-pooling, or otherwise) or until a non-standard unit, eliminating such interests, has been approved by the Commission.  
(R-4361)

SEC. 15	SEC. 14
	0 28

**CERTIFICATION**

*I hereby certify that the information contained herein is true and complete to the best of my knowledge and belief.*

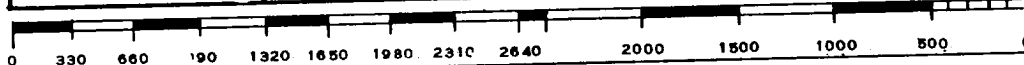
\_\_\_\_\_  
Name  
**C. R. Tilley**  
Position  
**Area Production Foreman**  
Company  
**TEXAS PACIFIC OIL CO., INC.**  
Date  
**8-15-72**

*I hereby certify that the well location shown on this plat was plotted from field notes of actual surveys made by me or under my supervision, and that the same is true and correct to the best of my knowledge and belief.*

Date Surveyed \_\_\_\_\_

Registered Professional Engineer  
and/or Land Surveyor

Certificate No. \_\_\_\_\_



RECEIVED

AUG 1 3 1972

OIL CONSERVATION COMM.  
HOBBBS, N. M.

NEW MEXICO  
OIL CONSERVATION COMMISSION

Gas Well Plat

Date October 20, 1953

Texas Pacific Coal & Oil Co. N. M. State "A" a/c-1 28  
Operator Lease Well No.

Name of Producing Formation Yates & Seven Rivers Pool Langmat

No. Acres Dedicated to the Well 160

SECTION 14 TOWNSHIP 23-S RANGE 36-E

	☼ 28		

I hereby certify that the information given above is true and complete to the best of my knowledge.

Name J. E. Maunula  
Position Production Foreman  
Representing Texas Pacific Coal & Oil Co.  
Address Box 1688, Hobbs, New Mexico

(over)

### INSTRUCTIONS

1. Is this gas well a dual completion? Yes \_\_\_\_\_ No x
2. If the answer to Question 1 is Yes, are there any other dually completed wells within the dedicated acreage? Yes \_\_\_\_\_ No \_\_\_\_\_

A separate plat must be filed for each gas well, outlining the area dedicated to such well and showing the location of all other wells (oil and gas) within the outlined area.

Mail in duplicate to the district office for the district in which the well is located.

