

District I  
1625 N. French Dr., Hobbs. NM 88240

State of New Mexico  
Energy, Minerals & Natural Resources Department

Revised February 21, 1994  
instructions on back

District II  
PO Drawer DD, Artesia, NM 88211-0719

OIL CONSERVATION DIVISION

Submit to Appropriate District Office

District III  
1000 Rio Brazos Rd. Aztec, NM 87410

PO Box 2088

State Lease - 4 Copies

Santa Fe, NM 87504-2088

Fee Lease - 3 Copies

District IV  
PO Box 2088, Santa Fe. NM 87504-2088

☒ AMENDED REPORT

WELL LOCATION AND ACREAGE DEDICATION PLAT

API Number <i>30-025-09358</i>		2 Pool Code 79240		3 Pool Name Jalmat Tansill Yates 7 Rvrs (Pro Gas)	
4 Property Code 24669		5 Property Name State A/C 1			6 Well Number <i>39</i>
7 OGRID No. 162791		8 Operator Name Raptor Resources			9 Elevation

10 Surface Location

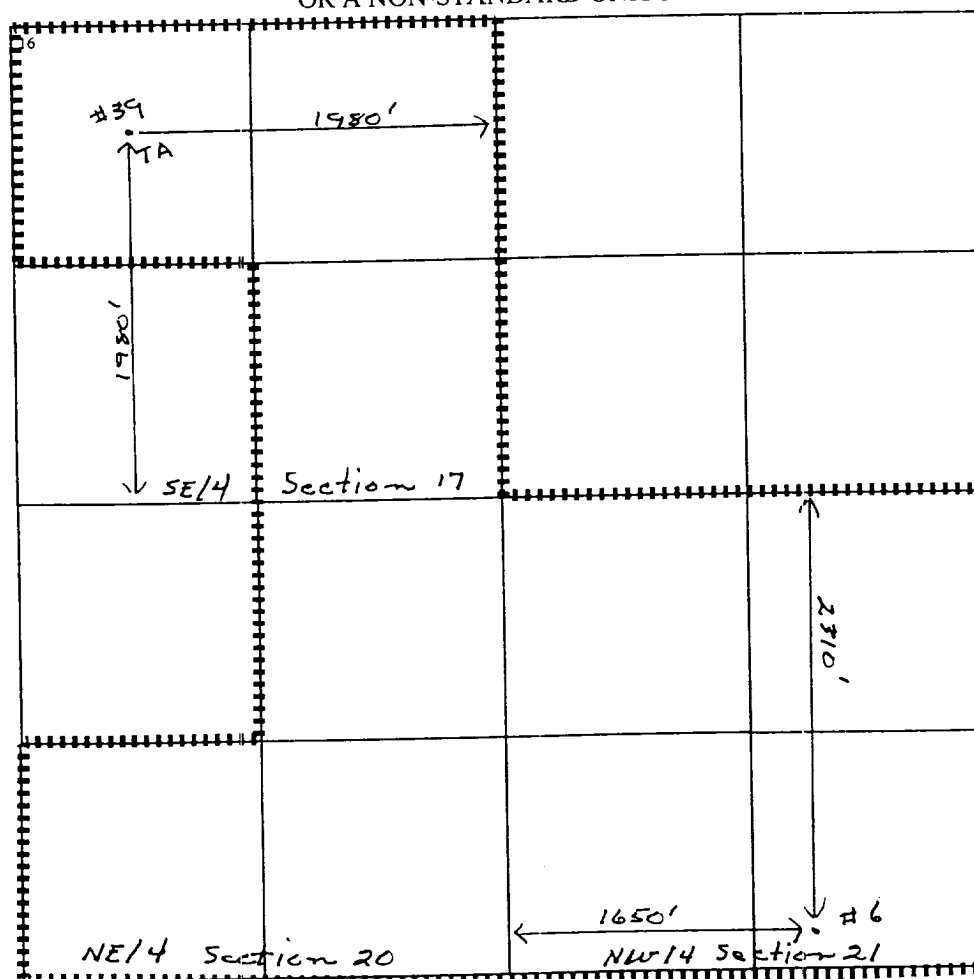
UL or lot no.	Section	Township	Range	Lot Idn	Feet from the	North/South line	Feet from the	East/West line	County
<i>J</i>	<i>17</i>	<i>23S</i>	<i>36E</i>		<i>1780</i>	<i>South</i>	<i>1780</i>	<i>West</i>	<i>Lea</i>

11 Bottom Hole Location If Different From Surface

UL or lot no.	Section	Township	Range	Lot Idn	Feet from the	North/South line	Feet from the	East/West line	County

12 Dedicated Acres 400	13 Joint or Infill	14 Consolidation Code	15 Order No. <i>R-9073-E</i>
---------------------------	--------------------	-----------------------	---------------------------------

NO ALLOWABLE WILL BE ASSIGNED TO THIS COMPLETION UNTIL ALL INTERESTS HAVE BEEN CONSOLIDATED  
OR A NON-STANDARD UNIT HAS BEEN APPROVED BY THE DIVISION



17 OPERATOR CERTIFICATION

I hereby certify that the information contained herein is true and complete to the best of my knowledge and belief

Signature

*Bill R. Keathly*

Printed Name

*Regulatory Agent*

Title

Date

18 SURVEYOR CERTIFICATION

I hereby certify that the well location shown on this plat was plotted from field notes of actual surveys made by me or under my supervision, and that the same is true and correct to the best of my belief.

Date of Survey

Signature and Seal of Professional Surveyor:

Certificate Number