

Submit to Appropriate  
District Office  
State Lease - 4 copies  
Fee Lease - 3 copies

State of New Mexico  
Energy, Minerals and Natural Resources Department

Form C-102  
Revised 1-1-89

OIL CONSERVATION DIVISION

P.O. Box 2088  
Santa Fe, New Mexico 87504-2088

DISTRICT I  
P.O. Box 1980, Hobbs, NM 88240

DISTRICT II  
P.O. Drawer DD, Artesia, NM 88210

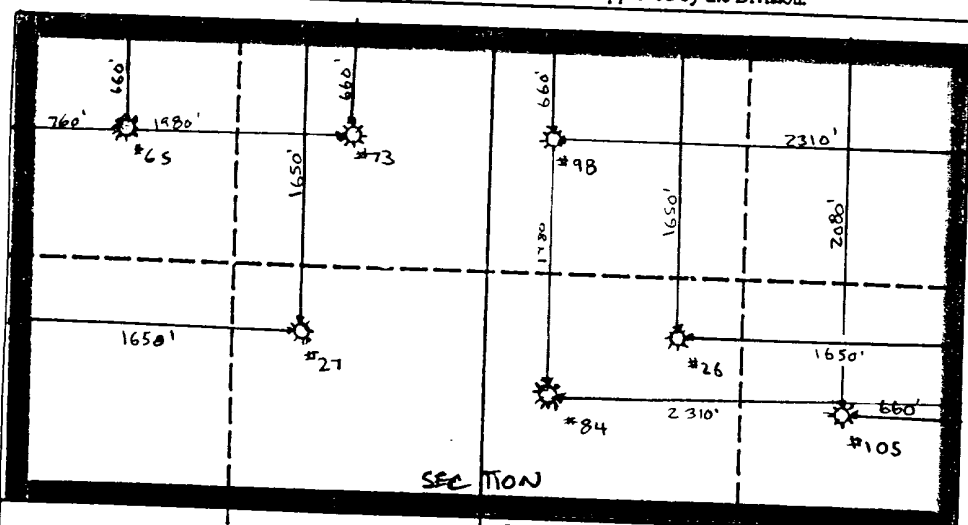
DISTRICT III  
1000 Rio Brazos Rd., Aztec, NM 87410

WELL LOCATION AND ACREAGE DEDICATION PLAT

All Distances must be from the outer boundaries of the section

Operator Hal J. Rasmussen Operating, Inc.			Lease State A A/C 1		Well No. 98
Unit Letter B	Section 23	Township 22 S	Range 36 E	County Lea	
Actual Footage Location of Well: 660 feet from the North line and 2310 feet from the East line					
Ground level Elev. Yates		Pool Jalmat-TNSL-YTS-7R		Dedicated Acreage: 320 Acres	

1. Outline the acreage dedicated to the subject well by colored pencil or hatchure marks on the plat below.
2. If more than one lease is dedicated to the well, outline each and identify the ownership thereof (both as to working interest and royalty).
3. If more than one lease of different ownership is dedicated to the well, have the interest of all owners been consolidated by communitization, unitization, force-pooling, etc.?  
☐ Yes ☐ No If answer is "yes" type of consolidation \_\_\_\_\_  
If answer is "no" list the owners and tract descriptions which have actually been consolidated. (Use reverse side of this form if necessary.)  
No allowable will be assigned to the well until all interests have been consolidated (by communitization, unitization, forced-pooling, or otherwise) or until a non-standard unit, eliminating such interest, has been approved by the Division.



OPERATOR CERTIFICATION

I hereby certify that the information contained herein is true and complete to the best of my knowledge and belief.

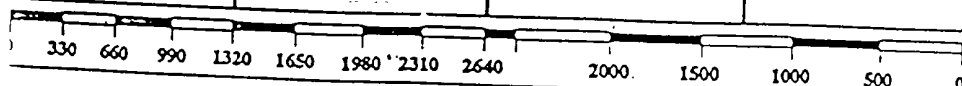
Signature \_\_\_\_\_  
Printed Name  
Jay D. Cherski  
Position  
Agent  
Company  
Hal J. Rasmussen Operating, Inc.  
Date  
1/23/91

SURVEYOR CERTIFICATION

I hereby certify that the well location shown on this plat was plotted from field notes of actual surveys made by me or under my supervision, and that the same is true and correct to the best of my knowledge and belief.

Date Surveyed \_\_\_\_\_  
Signature & Seal of  
Professional Surveyor \_\_\_\_\_

Certificate No. \_\_\_\_\_



Submit to Appropriate  
District Office  
State Lease - 4 copies  
Fee Lease - 3 copies

State of New Mexico  
Energy, Minerals and Natural Resources Department

Form C-102  
Revised 1-1-89

OIL CONSERVATION DIVISION

P.O. Box 2088

Santa Fe, New Mexico 87504-2088

DISTRICT I

P.O. Box 1980, Hobbs, NM 88240

DISTRICT II

P.O. Drawer DD, Artesia, NM 88210

DISTRICT III

1000 Rio Brazos Rd., Aztec, NM 87410

WELL LOCATION AND ACREAGE DEDICATION PLAT

All Distances must be from the outer boundaries of the section

Operator Hal J. Rasmussen Operating, Inc.			Lease State A A/C 1		Well No. 98
Unit Letter B	Section 23	Township 22 S	Range 36 E	County Lea	
Actual Footage Location of Well: 660 feet from the NORTH line and 2310 feet from the EAST line					
Ground level Elev.		Producing Formation YATES	Pool Jalmat-TNSL-YTS-7R	Dedicated Acreage: 320 Acres	

1. Outline the acreage dedicated to the subject well by colored pencil or hatchure marks on the plat below.

2. If more than one lease is dedicated to the well, outline each and identify the ownership thereof (both as to working interest and royalty).

3. If more than one lease of different ownership is dedicated to the well, have the interest of all owners been consolidated by communitization, unitization, force-pooling, etc.?

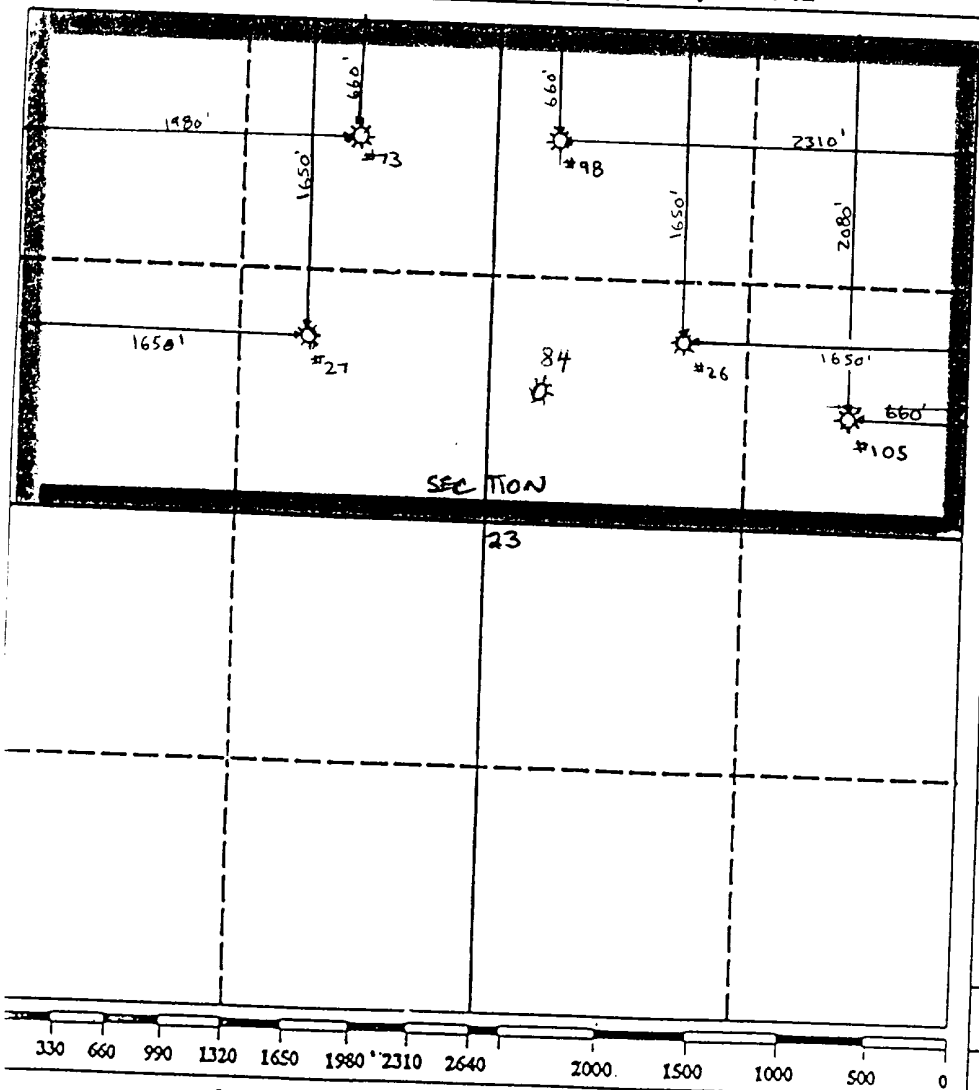
☐ Yes

☐ No

If answer is "yes" type of consolidation

If answer is "no" list the owners and tract descriptions which have actually been consolidated. (Use reverse side of this form if necessary.)

No allowable will be assigned to the well until all interests have been consolidated (by communitization, unitization, forced-pooling, or otherwise) or until a non-standard unit, eliminating such interest, has been approved by the Division.



OPERATOR CERTIFICATION

I hereby certify that the information contained herein is true and complete to the best of my knowledge and belief.

Signature

Printed Name

Jay D. Cherski

Position

Agent

Company

Hal J. Rasmussen Operating, Inc.

Date

8/26/96

SURVEYOR CERTIFICATION

I hereby certify that the well location shown on this plat was plotted from field notes of actual surveys made by me or under my supervision, and that the same is true and correct to the best of my knowledge and belief.

Date Surveyed

Signature & Seal of  
Professional Surveyor

Certificate No.



GARREY CARRUTHERS  
GOVERNOR

STATE OF NEW MEXICO  
ENERGY, MINERALS AND NATURAL RESOURCES DEPARTMENT  
OIL CONSERVATION DIVISION  
HOBBS DISTRICT OFFICE

August 24, 1990

POST OFFICE BOX 1980  
HOBBS, NEW MEXICO 88241-1980  
(505) 393-6161

Hal J. Rasmussen Operating Inc.  
Six Desta Drive, Suite 2700  
Midland, TX 79705

Attn: Jay Cherski

Re: State A A/c-1 Well #73-C  
Jalmat T-Y-SR Pool

Gentlemen:

Due to the recently submitted gas/oil ratio test the above- referenced well will be reclassified from an oil well to a gas well in the Jalmat Pool effective September 1, 1990.

The reclassification of this well as a gas well will eliminate the need to have the 320-acre proration unit (N/2 Sec. 23) approved by R-9073 reduced.

Please file a revised plat for all wells on this proration unit, showing (#26-G, #27-F, #98-B, 105-H and #73-C) Also, this well will need to be reported in the Jalmat gas section on future C-115 reports.

If you have any questions, please call Evelyn Downs at (505) 393-6161.

Very truly yours,

OIL CONSERVATION DIVISION

Jerry Sexton  
Supervisor, District I

ed

Submit to Appropriate  
District Office  
State Lease - 4 copies  
Fee Lease - 3 copies

State of New Mexico  
Energy, Minerals and Natural Resources Department

Form C-102  
Revised 1-1-89

OIL CONSERVATION DIVISION

P.O. Box 2088  
Santa Fe, New Mexico 87504-2088

DISTRICT I  
P.O. Box 1980, Hobbs, NM 88240

DISTRICT II  
P.O. Drawer DD, Artesia, NM 88210

DISTRICT III  
1000 Rio Brazos Rd., Aztec, NM 87410

WELL LOCATION AND ACREAGE DEDICATION PLAT

All Distances must be from the outer boundaries of the section

Operator Hal J. Rasmussen Operating, Inc.			Lease State A A/C 1		Well No. 98
Unit Letter B	Section 23	Township 23 <del>22</del> S	Range 36 E	County Lea	
Actual Footage Location of Well: 660 feet from the NORTH line and 2310 feet from the EAST line					
Ground level Elev.		Producing Formation TANILL -YATES	Pool Jalmat-TNSL-YTS-7R	Dedicated Acreage: 320 Acres	

1. Outline the acreage dedicated to the subject well by colored pencil or hatchure marks on the plat below.

2. If more than one lease is dedicated to the well, outline each and identify the ownership thereof (both as to working interest and royalty).

3. If more than one lease of different ownership is dedicated to the well, have the interest of all owners been consolidated by communitization, unitization, force-pooling, etc.?

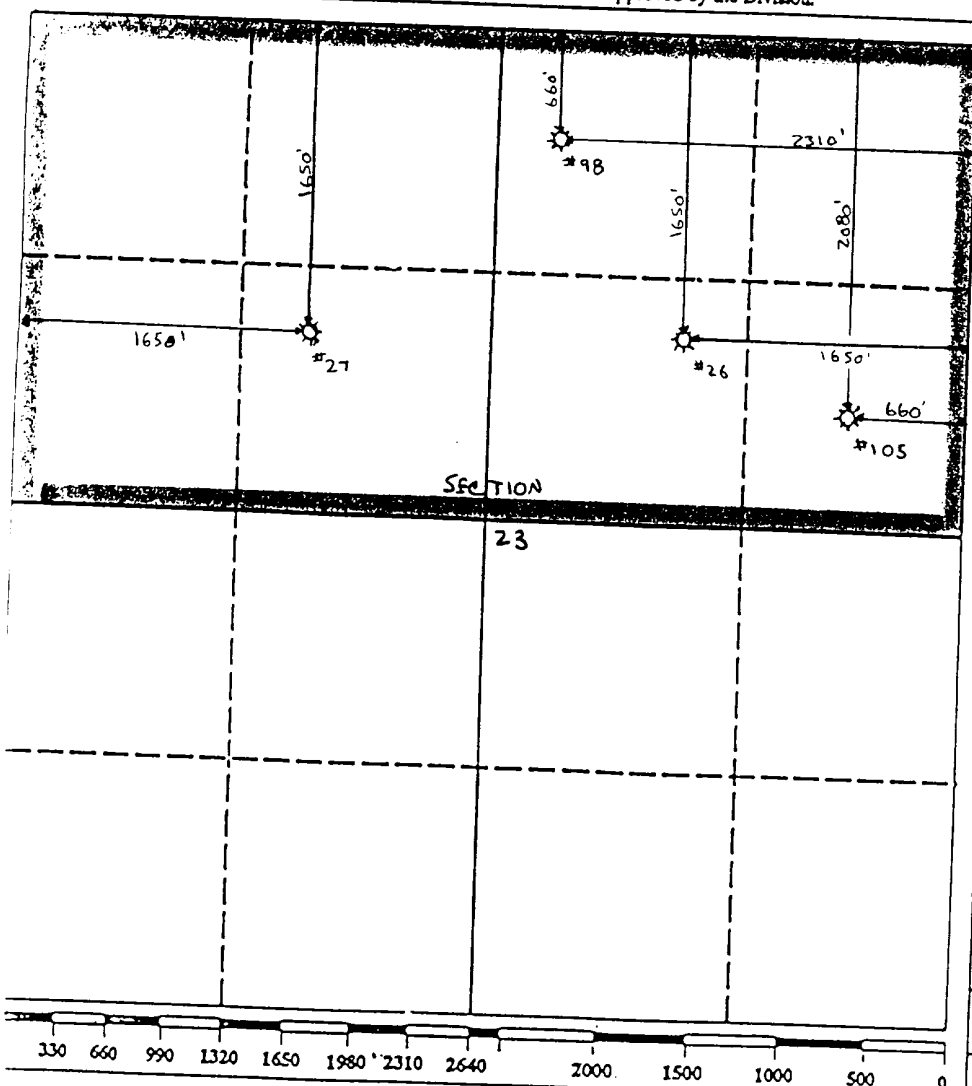
☐ Yes

☐ No

If answer is "yes" type of consolidation

If answer is "no" list the owners and tract descriptions which have actually been consolidated. (Use reverse side of this form if necessary.)

No allowable will be assigned to the well until all interests have been consolidated (by communitization, unitization, forced-pooling, or otherwise) or until a non-standard unit, eliminating such interest, has been approved by the Division.



OPERATOR CERTIFICATION

I hereby certify that the information contained herein is true and complete to the best of my knowledge and belief.

Signature

Printed Name

Jay D. Cherski

Position

Agent

Company

Hal J. Rasmussen Operating, Inc.

Date

11/31/90

SURVEYOR CERTIFICATION

I hereby certify that the well location shown on this plat was plotted from field notes of actual surveys made by me or under my supervision, and that the same is true and correct to the best of my knowledge and belief.

Date Surveyed

Signature & Seal of  
Professional Surveyor

Certificate No.