

Exxon Lse.No. 37721

N. MEXICO OIL CONSERVATION COMMISSION

Form C-102  
Supersedes C-128  
Effective 1-1-65

State Lse.No. B-934

## WELL LOCATION AND ACREAGE DEDICATION PLAT

Federal Lse.No. \_\_\_\_\_

All distances must be from the outer boundaries of the Section.

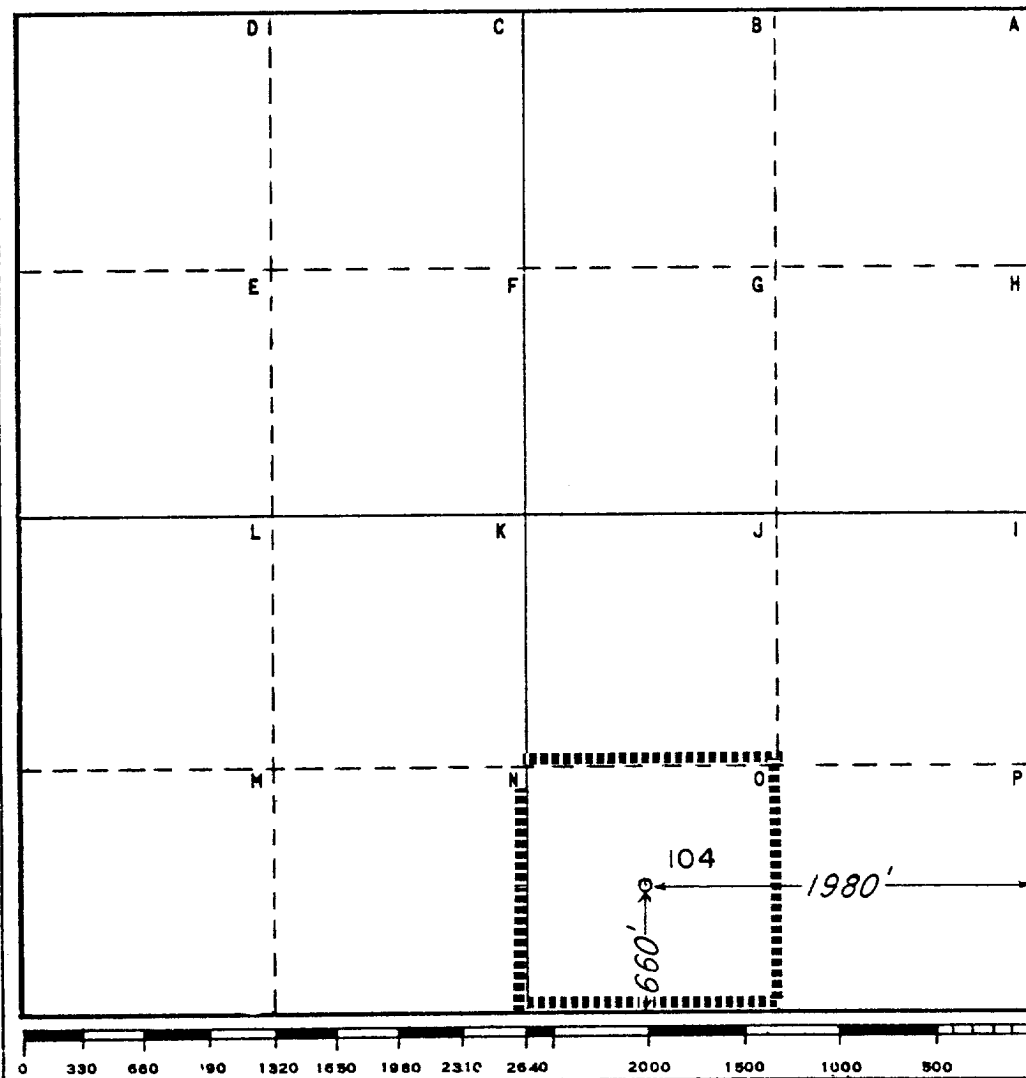
Operator Exxon Corporation		Lease New Mexico "S" State		Well No. 104
Unit Letter "O"	Section 2	Township 22-S	Range 37-E	County LEA
Actual Footage Location of Well: 1,980' feet from the East line and 660 feet from the South line				
Ground Level Elev: 3,363' RDB	Producing Formation Grayburg	Pool Permian Skelly Grayburg	Dedicated Acreage: 40 Acres	

1. Outline the acreage dedicated to the subject well by colored pencil or hatchure marks on the plat below.
2. If more than one lease is dedicated to the well, outline each and identify the ownership thereof (both as to working interest and royalty).
3. If more than one lease of different ownership is dedicated to the well, have the interests of all owners been consolidated by communitization, unitization, force-pooling, etc?

☐ Yes ☐ No If answer is "yes," type of consolidation \_\_\_\_\_

If answer is "no," list the owners and tract descriptions which have actually been consolidated. (Use reverse side of this form if necessary.) \_\_\_\_\_

No allowable will be assigned to the well until all interests have been consolidated (by communitization, unitization, forced-pooling, or otherwise) or until a non-standard unit, eliminating such interests, has been approved by the Commission.



## CERTIFICATION

I hereby certify that the information contained herein is true and complete to the best of my knowledge and belief.

Name A. L. Clemmer

Position

Proration Specialist

Company Exxon Corporation  
Box 1600 Midland, Texas

Date

June 20, 1973

I hereby certify that the well location shown on this plat was plotted from field notes of actual surveys made by me or under my supervision, and that the same is true and correct to the best of my knowledge and belief.

Date Surveyed

6-20-'73

Registered Professional Engineer  
and/or Land Surveyor

H. S. Westfield

Certificate No.

1382

2 Miles S.E. of Eunice

New Mexico

C.E. Sec. File No. A-417