

Submit to Appropriate  
District Office  
State Lease—4 copies  
Fee Lease—3 copies

State of New Mexico  
Energy, Minerals and Natural Resources Department

Form C-102  
Revised 1-1-88

OIL CONSERVATION DIVISION

DISTRICT I  
P.O. Box 1980, Hobbs, NM 88240

P.O. Box 2088  
Santa Fe, New Mexico 87504-2088

DISTRICT II  
P.O. Drawer DD, Artesia, NM 88210

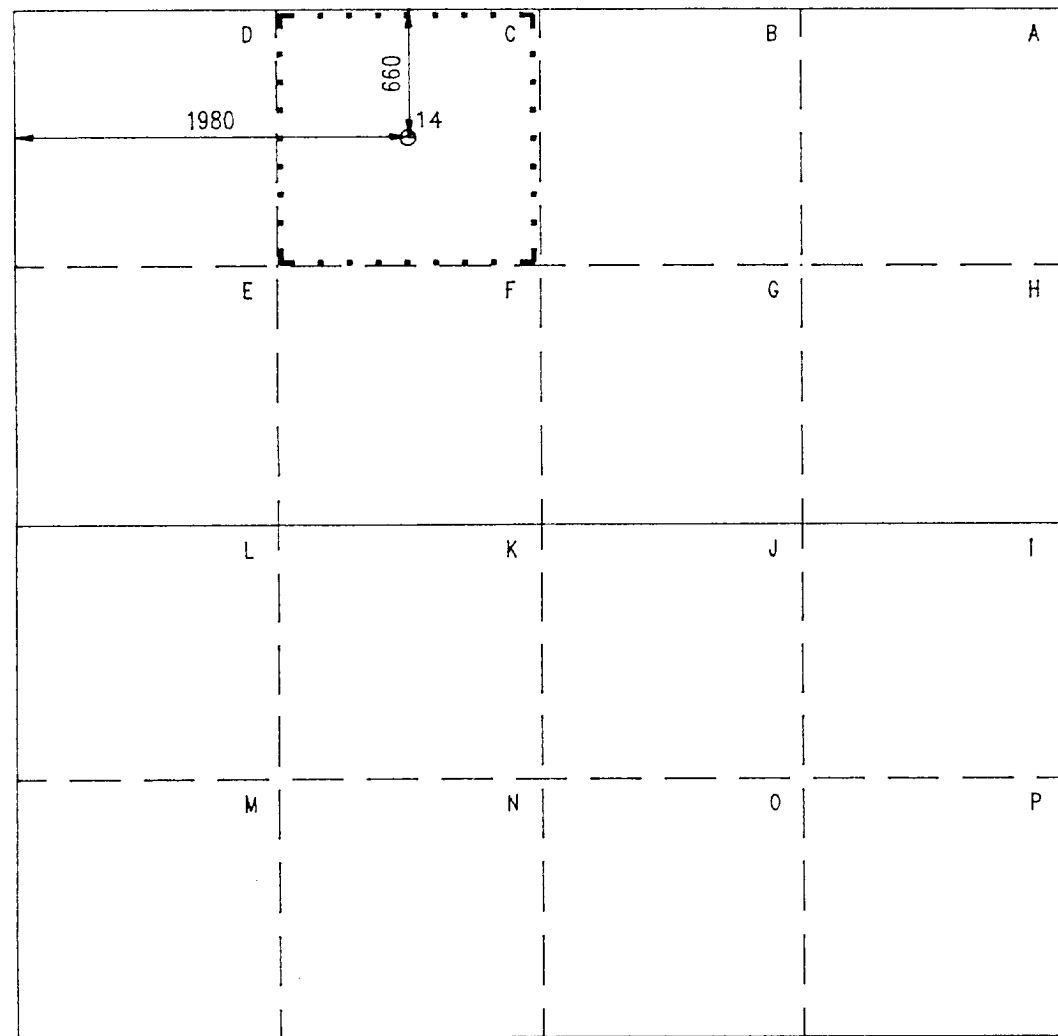
DISTRICT III  
1000 Rio Brazos Rd., Aztec, NM 87410

WELL LOCATION AND ACREAGE DEDICATION PLAT

All distances must be from the outer boundaries of the Section.

Operator Exxon Corporation			Lease New Mexico "S" State		Well No. 14
Unit Letter C	Section 2	Township 22 South	Range 37 East	County NMPM	Lea
Actual Footage Location of Well: 660 feet from the North line and 1980 feet from the West line.					
Ground level Elev. 3378'	Producing Formation Blinebry		Pool Blinebry Oil & Gas		Dedicated Acreage: 40 Acres

- Outline the acreage dedicated to the subject well by colored pencil or hatchure marks on the plat below.
- If more than one lease is dedicated to the well, outline each and identify the ownership thereof (both as to working interest and royalty).
- If more than one lease of different ownership is dedicated to the well, have the interest of all owners been consolidated by communitization, unitization, force-pooling, etc.?  
☐ Yes ☐ No If answer is "yes", type of consolidation \_\_\_\_\_  
If answer is "no", list the owners and tract descriptions which have actually been consolidated. (Use reverse side of this form if necessary.) \_\_\_\_\_  
No allowable will be assigned to the well until all interests have been consolidated (by communitization, unitization, forced-pooling, or otherwise) or until a non-standard unit, eliminating such interest, has been approved by the Division.



OPERATOR CERTIFICATION

I hereby certify that the information contained herein is true and complete to the best of my knowledge and belief.

Signature  
*Charlotte Harper*

Printed Name  
Charlotte Harper

Position  
PERMITS SUPERVISOR

Company Exxon Corporation  
P.O. Box 1600—Midland, Tx.—79702

Date  
01/19/90

SURVEYOR CERTIFICATION

I hereby certify that the well location shown on this plat was plotted from field notes of actual surveys made by me or under my supervision, and that the same is true and correct to the best of my knowledge and belief.

Date Surveyed  
12/13/46

Signature & Seal of  
Professional Surveyor

Certificate No.

2 Miles SE of Eunice, New Mexico.

C.E. File No. A-6877 L1

Rec'd 1-26-90

Explan. No. 37721

## NEW MEXICO OIL CONSERVATION COMMISSION

State Leasing No. B- WELL LOCATION AND ACREAGE DEDICATION PL

Form C-102  
Supersedes C.  
Effective 1-1-6.

Federal Leasing No. All distances must be from the outer boundaries of the Section.

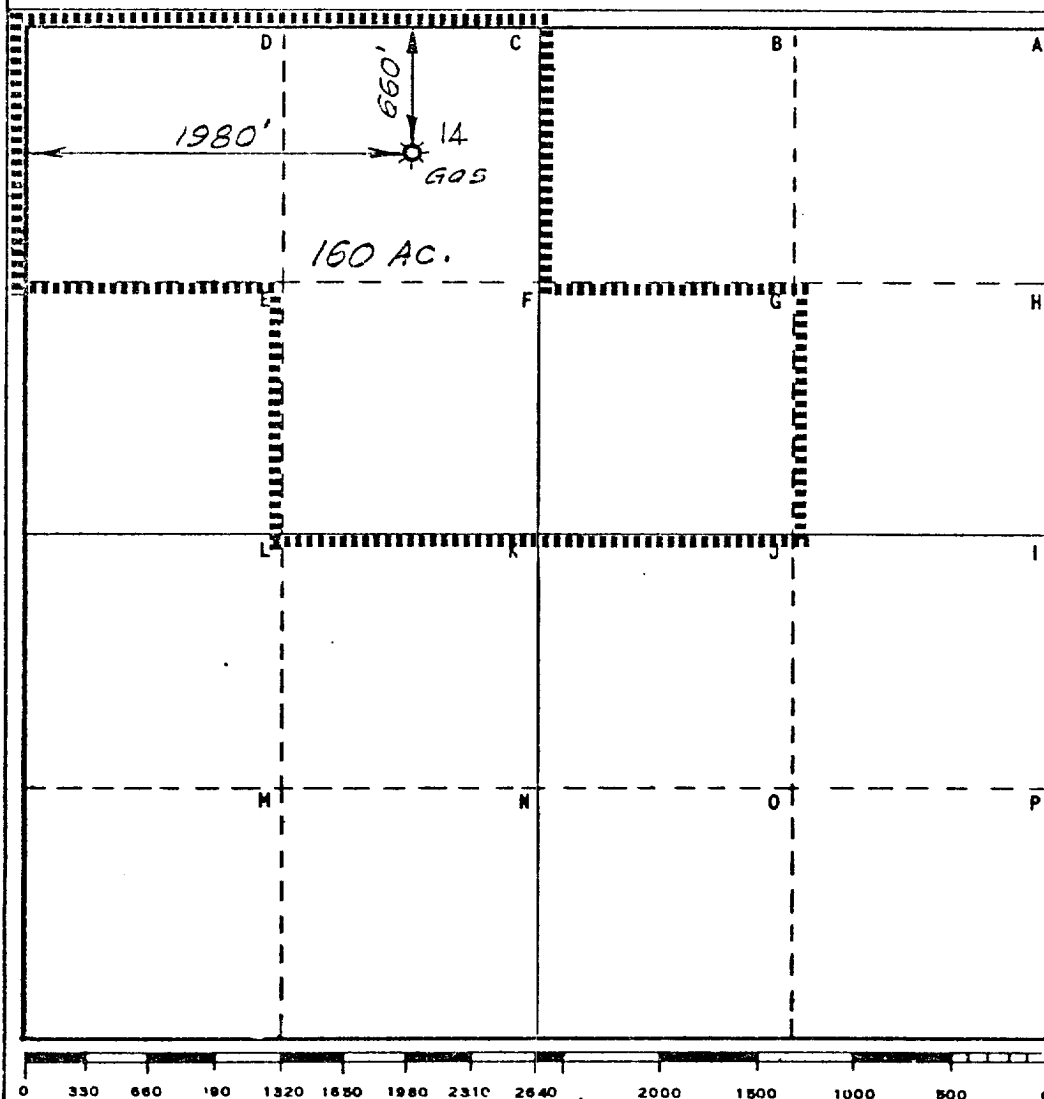
Operator Exxon Corporation			Lease New Mexico "S" State		Well No. 14
Unit Letter "C"	Section 2	Township 22-S	Range 37-E	County Lea	
Actual Footage Location of Well: 660 feet from the North line and 1,980 feet from the West line					
Ground Level Elev. 3,364'	Producing Formation Clearfork		Pool Blinbry (Gas)		Dedicated Acreage: 160 Acres

1. Outline the acreage dedicated to the subject well by colored pencil or hachure marks on the plat below.
2. If more than one lease is dedicated to the well, outline each and identify the ownership thereof (both as to working interest and royalty).
3. If more than one lease of different ownership is dedicated to the well, have the interests of all owners been consolidated by communitization, unitization, force-pooling, etc?

☐ Yes ☐ No If answer is "yes," type of consolidation \_\_\_\_\_

If answer is "no," list the owners and tract descriptions which have actually been consolidated. (Use reverse side of this form if necessary.) \_\_\_\_\_

No allowable will be assigned to the well until all interests have been consolidated (by communitization, unitization, forced-pooling, or otherwise) or until a non-standard unit, eliminating such interests, has been approved by the Commission.



## CERTIFICATION

I hereby certify that the information contained herein is true and complete to the best of my knowledge and belief.

Name A. L. Clemmer

Position Proration Specialist

Company Exxon Corporation  
Box 1600 Midland, Texas

Date June 6, 1974

I hereby certify that the well location shown on this plat was plotted from field notes of actual surveys made by me or under my supervision, and that the same is true and correct to the best of my knowledge and belief.

Date Surveyed 6/6/74

Registered Professional Engineer and/or Land Surveyor

H. S. Hestonfeldt  
Certificate No. 1382

6 Miles S of Eunice, New Mexico

C.E. Sec. File No. A-6834-B

DUPLICATE

NEW MEXICO  
OIL CONSERVATION COMMISSION

Gas Well Plat

HOBBS OFFICE DEC. 22 1953

HUMBLE OIL & REFINING CO.

NEW MEXICO STATE "S"

14

Operator

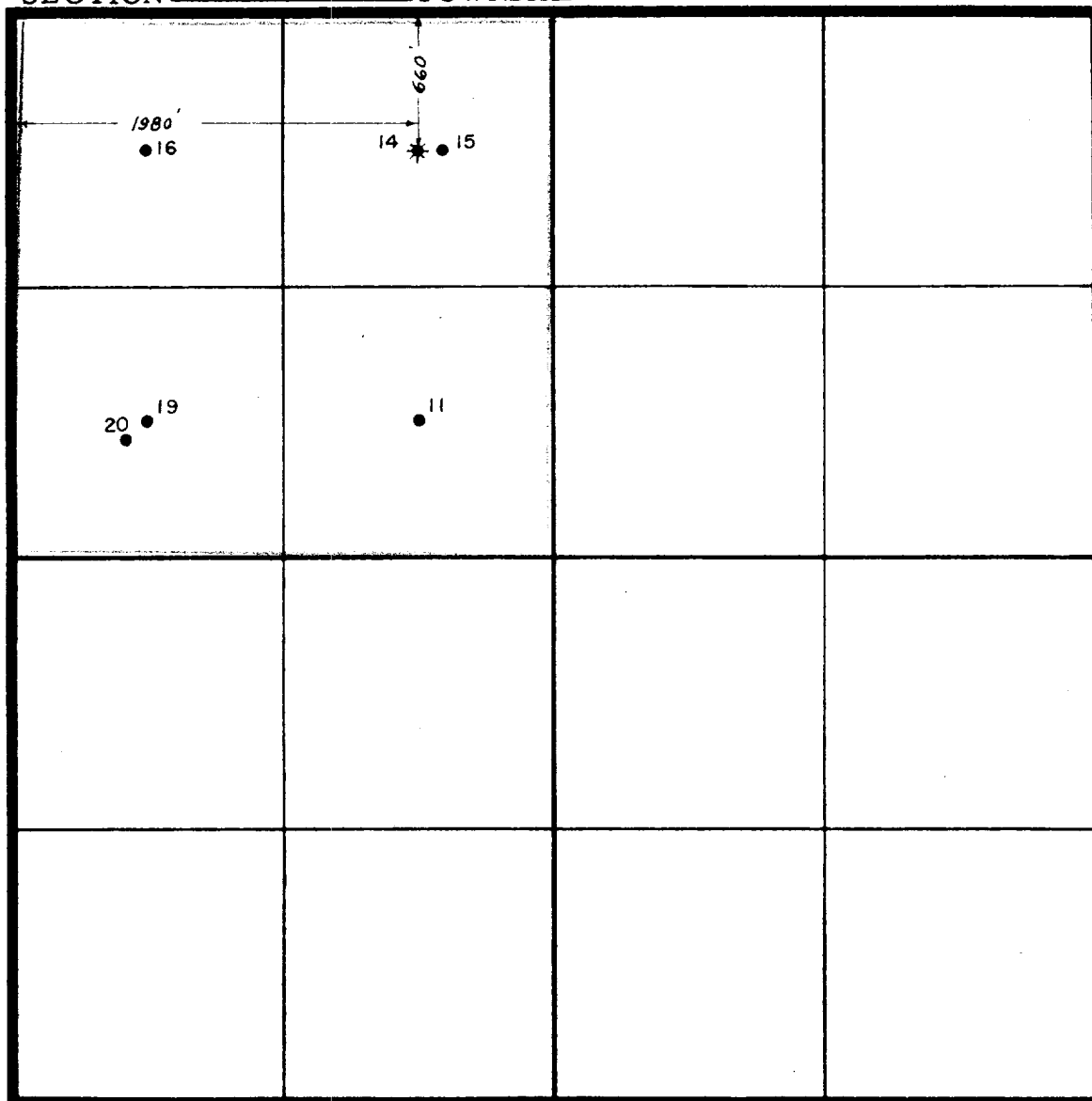
Lease 1954 JUN 2 PM 3:34 Well No.

(DRINKARD OIL)

Name of Producing Formation BLINEBRY GAS Pool BLINEBRY

No. Acres Dedicated to the Well 160

SECTION 2 TOWNSHIP 22 S RANGE 37 E



I hereby certify that the information given above is true and complete to the best of my knowledge.

1. Is this gas well a dual completion? Yes No
2. Are there any other dually completed wells within the dedicated acreage? Yes No

Name \_\_\_\_\_  
Position Assistant Division Superintendent  
Representing Humble Oil & Refining Co.  
Address Box 1600 - Midland, Texas

(over)