

Exxon Lease No. 37721

NEW MEXICO OIL CONSERVATION COMMISSION

Form C-102  
Supersedes C-126  
Effective 1-1-65

State Lease No. B-9

WELL LOCATION AND ACREAGE DEDICATION PLAT

Federal Lease No.

All distances must be from the outer boundaries of the Section.

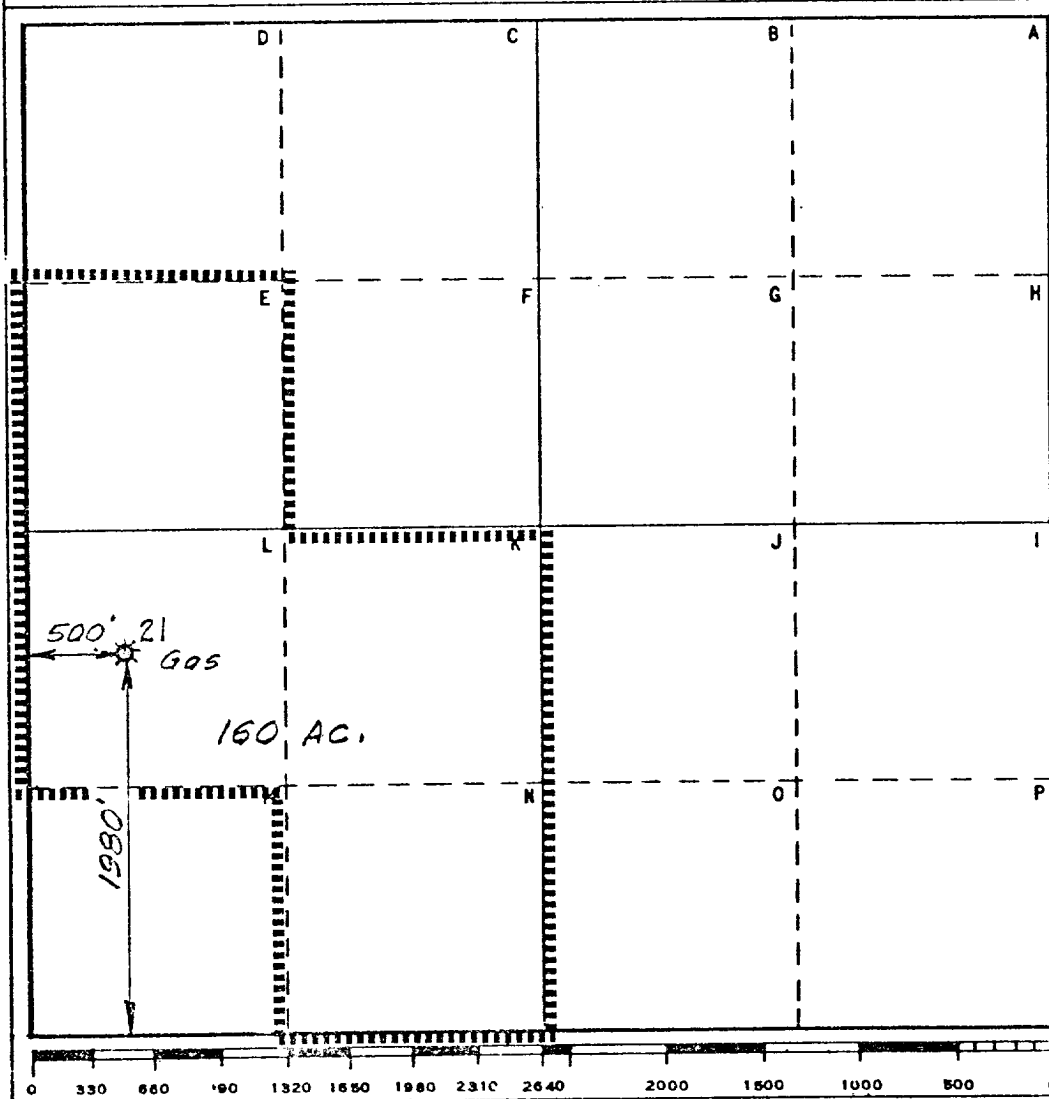
Operator Exxon Corporation			Lease New Mexico "S" State		Well No. 21
Unit Letter "L"	Section 2	Township 22-S	Range 37-E	County Lea	
Actual Footage Location of Well: 500 feet from the West line and 1,980 feet from the South line					
Ground Level Elev. 3,368'	Producing Formation Clearfork		Pool Blinebry (Gas)		Dedicated Acreage: 160 Acres

1. Outline the acreage dedicated to the subject well by colored pencil or hatchure marks on the plat below.
2. If more than one lease is dedicated to the well, outline each and identify the ownership thereof (both as to working interest and royalty).
3. If more than one lease of different ownership is dedicated to the well, have the interests of all owners been consolidated by communitization, unitization, force-pooling, etc?

☐ Yes ☐ No If answer is "yes," type of consolidation \_\_\_\_\_

If answer is "no," list the owners and tract descriptions which have actually been consolidated. (Use reverse side of this form if necessary.) \_\_\_\_\_

No allowable will be assigned to the well until all interests have been consolidated (by communitization, unitization, forced-pooling, or otherwise) or until a non-standard unit, eliminating such interests, has been approved by the Commission.



## CERTIFICATION

I hereby certify that the information contained herein is true and complete to the best of my knowledge and belief.

Name D. L. Clemmer

Position Proration Specialist

Company Exxon Corporation  
Box 1600 Midland, Texas

Date June 6, 1974

I hereby certify that the well location shown on this plat was plotted from field notes of actual surveys made by me or under my supervision, and that the same is true and correct to the best of my knowledge and belief.

Date Surveyed 6/6/74

Registered Professional Engineer and/or Land Surveyor

H. L. Hesterfield

Certificate No. 1384

6 Miles S of Eunice, New Mexico

C.E. Sec. File No. A-6834 C