

NEW MEXICO OIL CONSERVATION COMMISSION
WELL LOCATION AND ACREAGE DEDICATION PLAT AMENDED

Form C-102
Supersedes C-128
Effective 1-1-65

All distances must be from the outer boundaries of the Section.

| | | | | | |
|--|--|-------------------------|-------------------------------|---------------------------------------|----------------------|
| Operator Atlantic Richfield Company | | | Lease R. L. Brunson | | Well No. 1 |
| Unit Letter J | Section 4 | Township 22-S | Range 37-E | County Lea | |
| Actual Footage Location of Well: <div style="display: flex; justify-content: space-between;"> 2310 feet from the South line and 2310 feet from the East line </div> | | | | | |
| Ground Level Elev. 3440' | Producing Formation Drinkard | Pool Drinkard | | Dedicated Acreage: 40 Acres | |

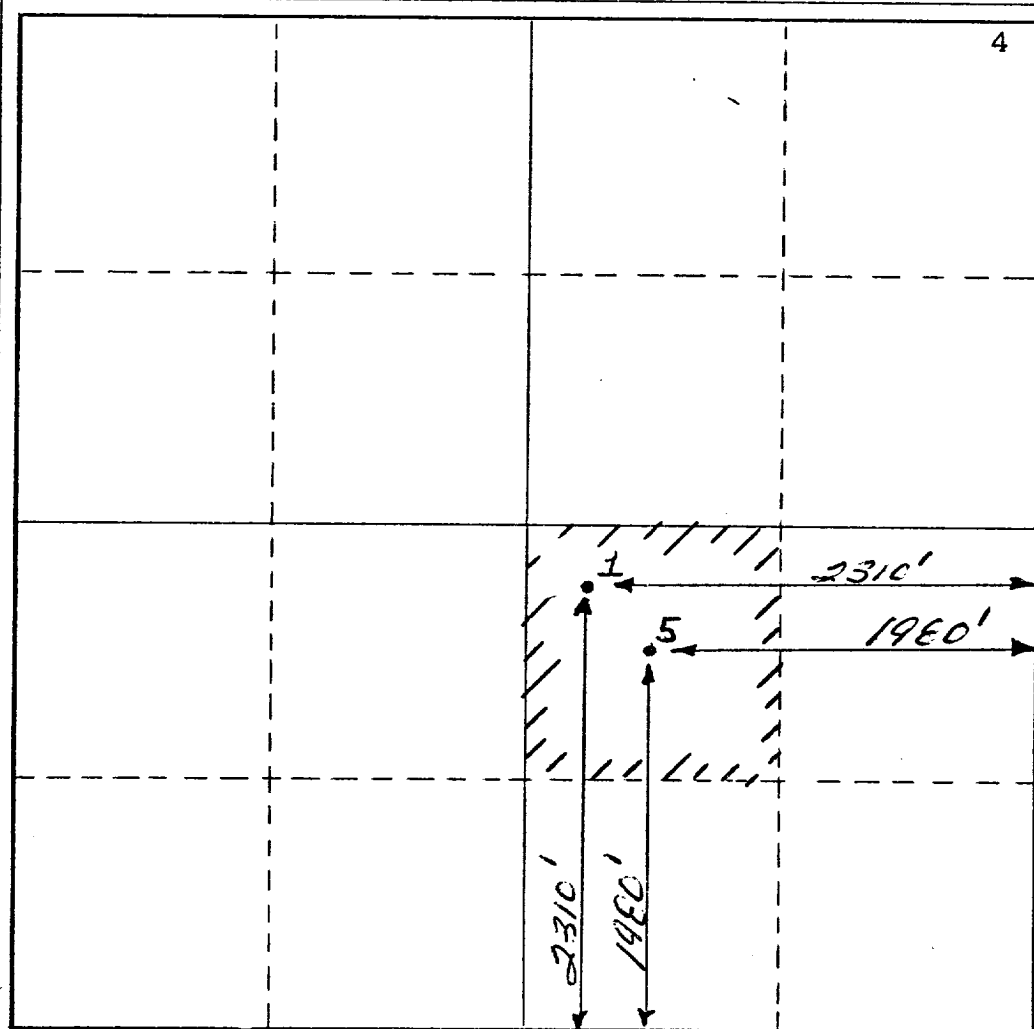
1. Outline the acreage dedicated to the subject well by colored pencil or hachure marks on the plat below.
2. If more than one lease is dedicated to the well, outline each and identify the ownership thereof (both as to working interest and royalty).
3. If more than one lease of different ownership is dedicated to the well, have the interests of all owners been consolidated by communitization, unitization, force-pooling, etc?

☐ Yes ☐ No If answer is "yes," type of consolidation _____

If answer is "no," list the owners and tract descriptions which have actually been consolidated. (Use reverse side of this form if necessary.) _____

No allowable will be assigned to the well until all interests have been consolidated (by communitization, unitization, forced-pooling, or otherwise) or until a non-standard unit, eliminating such interests, has been approved by the Commission.

R-37E



CERTIFICATION

I hereby certify that the information contained herein is true and complete to the best of my knowledge and belief.

O. D. Bretches

Name
O. D. Bretches

Position
Dist. Drlg. Supervisor

Company
Atlantic Richfield Co.

Date
October 4, 1972

I hereby certify that the well location shown on this plat was plotted from field notes of actual surveys made by me or under my supervision, and that the same is true and correct to the best of my knowledge and belief.

Date Surveyed _____

Registered Professional Engineer
and/or Land Surveyor _____

Certificate No. _____

22 S

RECEIVED

CL 17 1972

OIL CONSERVATION COMM.
HOUSTON, N. M.