

COUNTY LEA		FIELD Paddock		OWWO	
OPR GETTY OIL CO.				STATE NM M.L. 10046	
2 Clifton, R. L.				MAP	
Sec 4, T-22-S, R-37-E				CO-ORD	
660' PSL, 810' FWL of Sec					
Re-Cmp 11-4-71		CLASS		EL	
		FORMATION	DATUM	FORMATION	DATUM
CSG & SX - TUBING					
13 3/8" at 335' w/325 sx					
9 5/8" at 2955' w/1800 sx					
5 1/2" at 8096' w/1350 sx					
LOGS EL GR RA IND HC A					
		TD 8097'; PBD 5760'			
TEMPORARILY ABANDONED					

Distribution limited and publication prohibited by subscribers' agreement.
Reproduction rights reserved by Williams & Lee Scouting Service, Inc.

CONT. DATE PROF DEPTH 5288' TYPE (W)

F.R.C. 12-9-71; Opr's Elev. 3442' DF
PD 5288' WO (Paddock)
(Orig. Tidewater Associated Oil Co., Comp
8-10-46 thru (Ellenburger) Perfs 8010-33',
OTD 8097'; OWWO & Re-Cmp 2-29-50 thru (Briekard)
Perfs 6520-80', OPB 6615'; OWWO & Re-Cmp
2-8-65 by Tidewater Oil Co. thru (Blinberry)
Perfs 5788-5847', OPB 6390')
12-7-71 TD 8097'; PBD 5760'; TEMPORARILY ABANDONED
PB to 5760'
Perf (Paddock) 5058-66', 5140-44', 5158-64',
5167-70', 5210-20', 5227-28', 5233-38',
5264-68', 5274-78', 5284-88' w/1 SPF
Acid (5058-5288') 5000 gals

LEA Paddock NM Sec 4, T22S, R37E
GETTY OIL CO. 2 Clifton, R. L. Page #2

12-7-71 Continued
 Swbd 206 BFW w/trace oil in 10 hrs (5058-5288')
12-9-71 COMPLETION REPORTED

COUNTRY	LEA	FIELD	Blinebry	STATE	NM	OWWO
OPR	TIDEWATER OIL COMPANY					MAP
2 Clifton, R. L.						
Sec. 4, T-22-S, R-37-E					CO-ORD	
660' fr S Line & 810' fr W Line of Sec.						
Re-Spud 1-31-65			CLASS		EL	
Re-Comp 2-8-65			FORMATION	DATUM	FORMATION	DATUM
CSG & SX - TUBING						
13 3/8" 355' 325						
9 5/8" 2955' 1800						
5 1/2" 8096' 1350						
LOGS EL GR RA IND HC A						
			TD 8097', PBD 6390'			

1P Blinebry Perfs 5788-5847' Flwd 180 BCPD. Pot. Based on 12 hr test of 90 BO thru 18/64" chk., TP 850#, CP Pkr, GOR 3511.

Distribution limited and publication prohibited by subscribers' agreement.
Reproduction rights reserved by Williams & Lee Scouting Service, Inc.

CONT.	PROP DEPTH	TYPE
DATE		

F.R.C. 2-25-65; OWWO, OTD 8097'
 Orig comp from Drinkard perfs 6520-80'
 2-22-65 TD 8097', PBD 6390', COMPLETED.
 Set CIBP @ 6390' to shut off Drinkard perfs 6520-80'.
 Perf (Blinebry) @ 5788', 5793', 5797', 5813', 5827', 5837', 5843', 5847' W/1 SPI
 Ac. 1000 gals.
 Frac 30,000 gals oil + 30,000# sd. 5788-5847'.

**NEW MEXICO OIL CONSERVATION COMMISSION
WELL LOCATION AND ACREAGE DEDICATION PLAT**

Form C-102
Supersedes C-128
Effective 1-1-65

All distances must be from the outer boundaries of the Section.

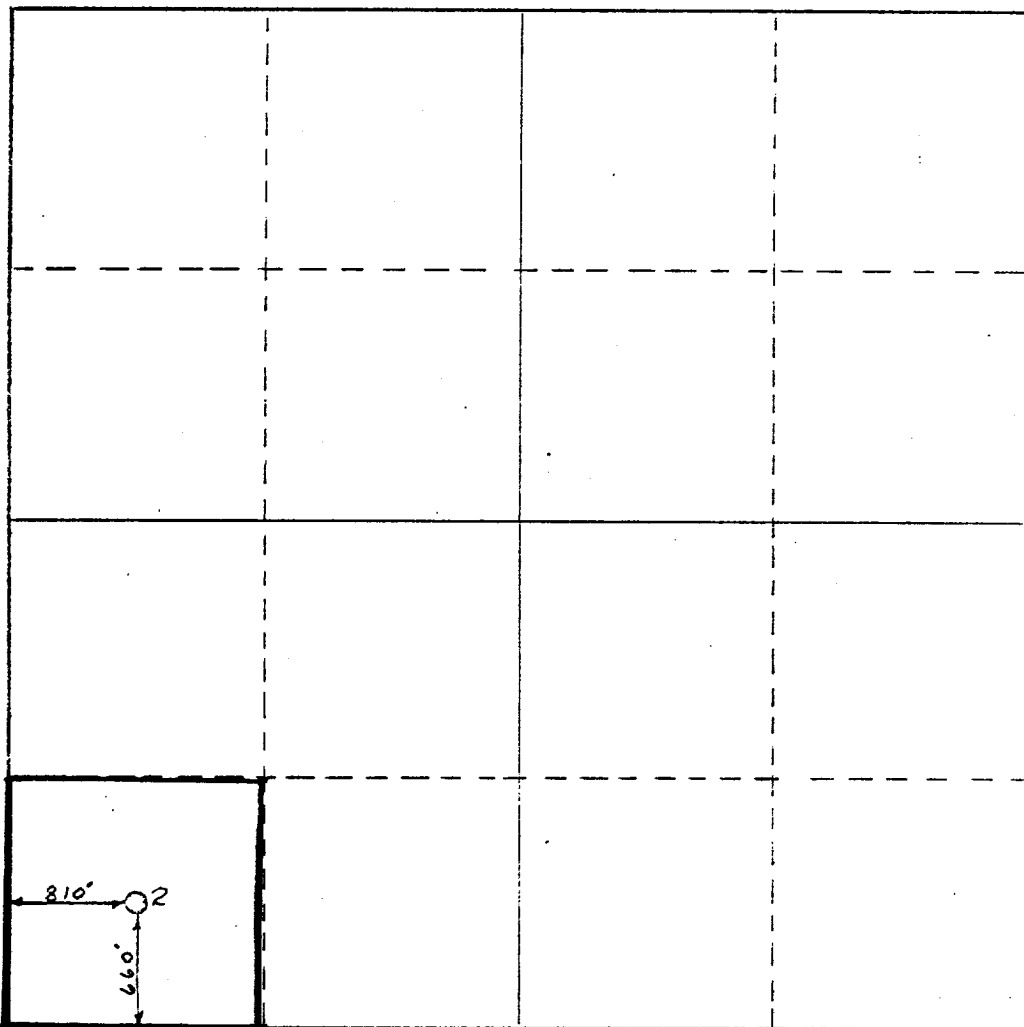
Operator GETTY OIL COMPANY			Lessee R. L. CLIFTON		Well No. 2
Unit Letter M	Section 4	Township 22-S	Range 37-E	County LEA	
Actual Postage Location of Well: <div style="display: flex; justify-content: space-between; align-items: center;"> 660 feet from the SOUTH line and 810 feet from the WEST line </div>					
Ground Level Elev. 3442' D.F.	Producing Formation BLINEBRY	Pool BLINEBRY		Dedicated Acreage: 40 Acres	

1. Outline the acreage dedicated to the subject well by colored pencil or hachure marks on the plat below.
2. If more than one lease is dedicated to the well, outline each and identify the ownership thereof (both as to working interest and royalty).
3. If more than one lease of different ownership is dedicated to the well, have the interests of all owners been consolidated by communitization, unitization, force-pooling, etc?

☐ Yes ☐ No If answer is "yes," type of consolidation _____

If answer is "no," list the owners and tract descriptions which have actually been consolidated. (Use reverse side of this form if necessary.) _____

No allowable will be assigned to the well until all interests have been consolidated (by communitization, unitization, forced-pooling, or otherwise) or until a non-standard unit, eliminating such interests, has been approved by the Commission.



CERTIFICATION

I hereby certify that the information contained herein is true and complete to the best of my knowledge and belief.

Name
C. L. WADE *C. L. Wade*

Position
AREA SUPERINTENDENT

Company
GETTY OIL COMPANY

Date
FEBRUARY 3, 1976

I hereby certify that the well location shown on this plat was plotted from field notes of actual surveys made by me or under my supervision, and that the same is true and correct to the best of my knowledge and belief.

Land Surveyor

State Area Protection Engineer
and/or Land Surveyor

Certificate No. _____

0 330 660 990 1320 1650 1980 2310 2640 2970 3300 3630 3960 4290 4620 4950 5280 5610 5940 6270 6600