

DISTRICT I  
P.O. Box 1980, Hobbs, NM 88240

DISTRICT II  
P.O. Drawer DD, Artesia, NM 88210

# OIL CONSERVATION DIVISION

P.O. Box 2088  
Santa Fe, New Mexico 87504-2088

INSTRUCTIONS ON REVERSE  
SIDE

This form is not to be used for  
reporting packer leakage tests in  
Northwest New Mexico

## SOUTHEAST NEW MEXICO PACKER LEAKAGE TEST

Operator EXXON CORP.			Lease J. L. GREENWOOD			Well No. #9	
Location of Well	Unit J	Sec. 9	Twp 22-S	Rge 37-E	County LEA		
Name of Reservoir or Pool			Type of Prod. (Oil or Gas)	Method of Prod. Flow, Art Lift	Prod. Medium (Tbg. or Csg)	Choke Size	
Upper Compl	PADDOCK		GAS	FLOW	CSG	OPEN	
Lower Compl	BLINEBRY		GAS	FLOW	TBG	OPEN	

### FLOW TEST NO. 1

Both zones shut-in at (hour, date): 11:40 AM, 12-11-92

Well opened at (hour, date):	Upper Completion	Lower Completion
11:20 AM, 12-12-92		X
Indicate by ( X ) the zone producing.....		
Pressure at beginning of test.....	82	770
Stabilized? (Yes or No).....	YES	YES
Maximum pressure during test.....	94	800
Minimum pressure during test.....	82	250
Pressure at conclusion of test.....	94	250
Pressure change during test (Maximum minus Minimum).....	12	550
Was pressure change an increase or a decrease?.....	INCREASE	DECREASE
Well closed at (hour, date): 10:50 AM, 12-13-92	Total Time On Production 23 HRS 30 MIN	
Oil Production During Test: 30 bbls; Grav. 36.5	Gas Production During Test: 2795	MCF; GOR 93167

Remarks

### FLOW TEST NO. 2

Well opened at (hour, date):	Upper Completion	Lower Completion
10:50 AM, 12-14-92		
Indicate by ( X ) the zone producing.....	X	--
Pressure at beginning of test.....	94	760
Stabilized? (Yes or No).....	YES	YES
Maximum pressure during test.....	94	800
Minimum pressure during test.....	33	760
Pressure at conclusion of test.....	33	800
Pressure change during test (Maximum minus Minimum).....	61	40
Was pressure change an increase or a decrease?.....	DECREASE	INCREASE
Well closed at (hour, date): 11:00 AM, 12-15-92	Total time on Production 24 HRS 10 MIN	
Oil production During Test: 0 bbls; Grav. 0	Gas Production During Test: 0	MCF; GOR

Remarks

### OPERATOR CERTIFICATE OF COMPLIANCE

I hereby certify that the information contained herein is true  
and completed to the best of my knowledge

EXXON CORP. P. O. BOX 1600 MIDLAND, TX 79702

Operator

Signature

DON J. BATES ADMIN. SPECIALIST

Printed Name

Title

1-6-93

Date

915/688-7874

Telephone No.

### OIL CONSERVATION DIVISION

Date Approved FEB 11 1993

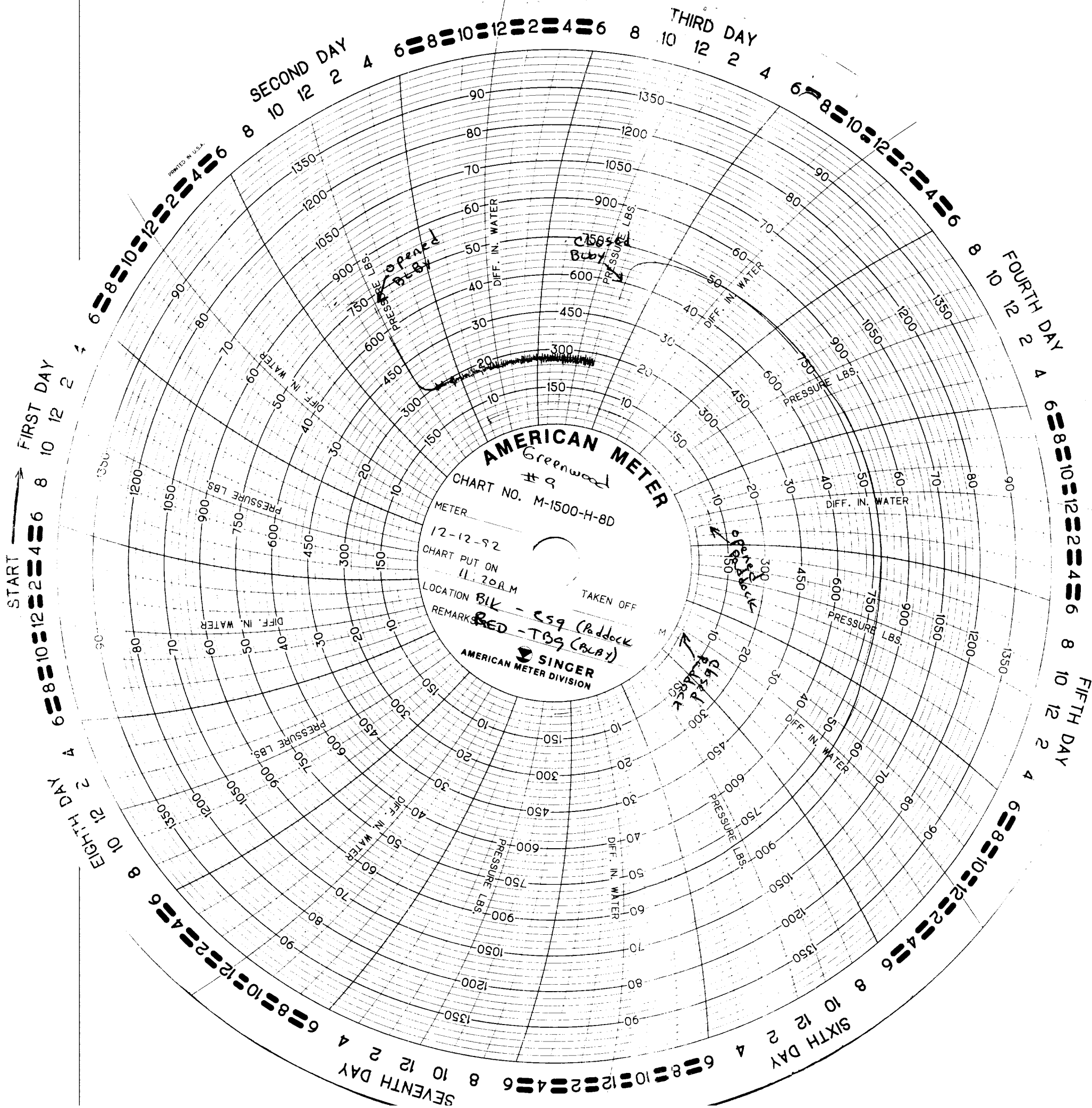
By ORIGINAL SIGNATURE OF EXXON

REGIONAL SUPERVISOR

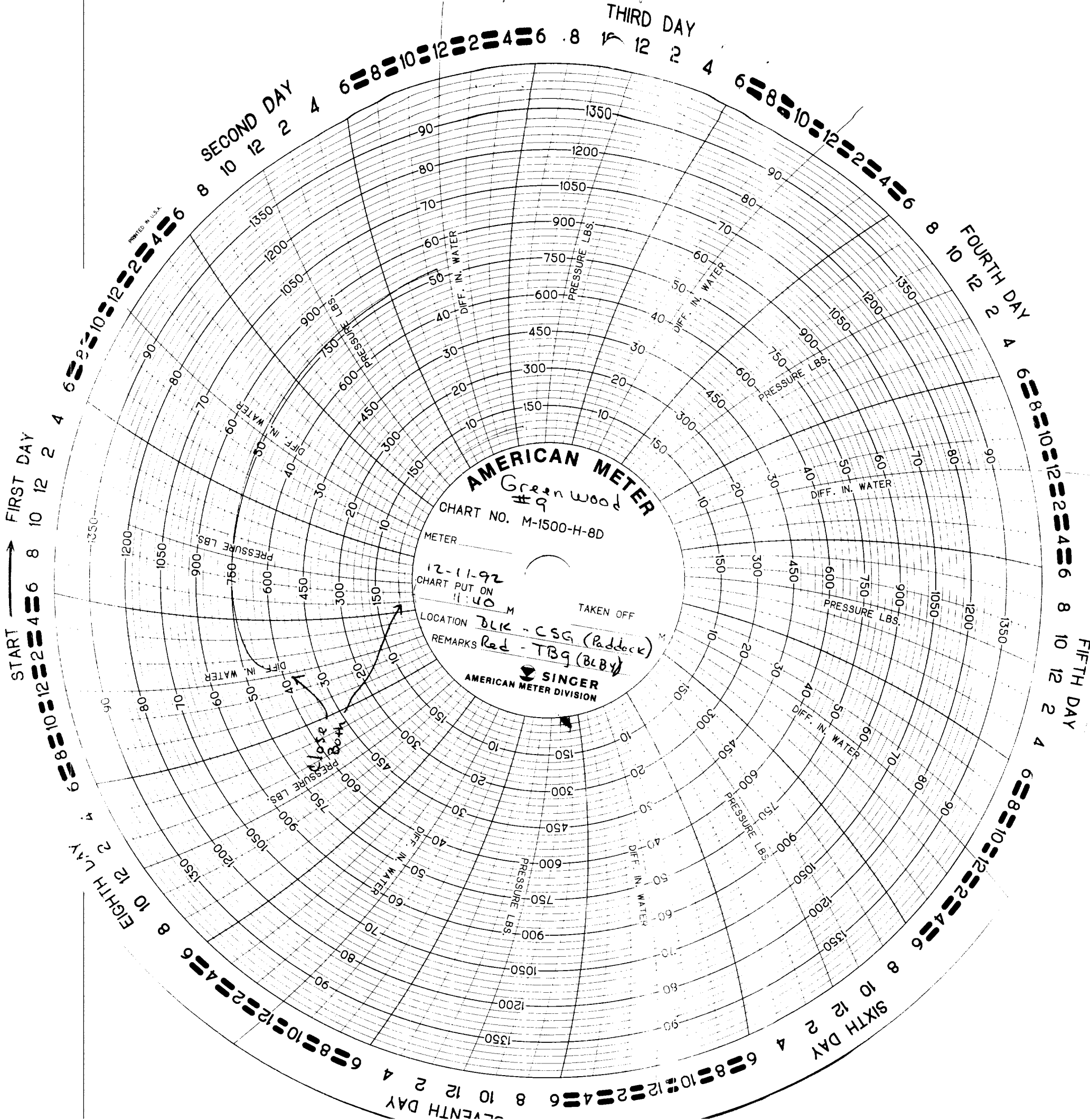
Title

## **INSTRUCTIONS FOR SOUTHEAST NEW MEXICO PACKER LEAKAGE TEST**

1. A packer leakage test shall be commenced on each multiply completed well within seven days after actual completion of the well, and annually thereafter as prescribed by the order authorizing the multiple completion. Such test shall also be commenced on all multiple completions within seven days following recompletion and/or chemical or fracture treatment, and whenever remedial work has been done on a well during which the packer or the tubing have been disturbed. Tests shall also be taken at any time that communication is suspected or when requested by the Division.
2. At least 72 hours prior to the commencement of any packer leakage test, the operator shall notify the Division in writing of the exact time the test is to be commenced. Offset operators shall also be so notified.
3. The packer leakage test shall commence when both zones of the dual completion are shut-in for pressure stabilization. Both zones shall remain shut-in until the well-head pressure in each has stabilized and for minimum of two hours thereafter, provided, however, that they need not remain shut-in more than 24 hours.
4. For Flow Test No. 1, one zone of the dual completion shall be produced at the normal rate of production while the other zone remains shut-in. Such test shall be continued until the flowing wellhead pressure has become stabilized and for minimum of two hours thereafter, provided however, that the flow test need not continue for more than 24 hours.
5. Following completion of Flow Test No. 1, the well shall again be shut-in, in accordance with Paragraph 3 above.
6. Flow Test No. 2 shall be conducted even though no leak was indicated during Flow Test No. 1. Procedure for Flow Test No. 2 is to be the same as for Flow Test No. 1 except that the previously produced zone shall remain shut-in while the previously shut-in zone is produced.
7. All pressures, throughout the entire test, shall be continuously measured and recorded with recording pressure gauges, the accuracy of which must be checked with deadweight tester at least twice, once at the beginning and once at the end, of each flow test.
8. The results of the above-described tests shall be filed in triplicate within 15 days after completion of the test. Tests shall be filed with the appropriate District Office of the New Mexico Oil Conservation Division on Southeast New Mexico Packer Leakage Test Form Revised 1-1-89, together with the original pressure recording gauge charts with all the deadweight pressures which were taken indicated thereon. In lieu of filing the aforesaid charts, the operator may construct a pressure versus time curve from each zone of each test, indicating thereon all pressure changes which may be reflected by the gauge charts as well as all deadweight pressure readings which were taken. If the pressure curve is submitted, the original chart must be permanently filed in the operator's office. Form C-116 shall also accompany the Packer Leakage Test Form when the test period coincides with a gas-oil ratio test period.



RECEIVED  
JAN 14 1993  
OCD HARRIS



AMERICAN METER  
Greenwood  
#9

CHART NO. M-1500-H-8D  
METER

12-11-92  
CHART PUT ON  
11:40 M

TAKEN OFF

LOCATION BLK - CSG (Paddock)  
REMARKS Red - TBq (Bldg)

SINGER  
AMERICAN METER DIVISION

RECEIVED  
JAN 14 1993  
CDD FIELD OFFICE