

Submit to Appropriate
District Office
State Lease-4 copies
Fee Lease-3 copies

State of New Mexico
Energy, Minerals and Natural Resource Department

Form C-10
Revised 1-

OIL CONSERVATION DIVISION

P.O. Box 2088
Santa Fe, New Mexico 87504-2088

DISTRICT I
P.O. Box 1980, Hobbs, NM 88240

DISTRICT II
P.O. Drawer DD, Artesia, NM 88210

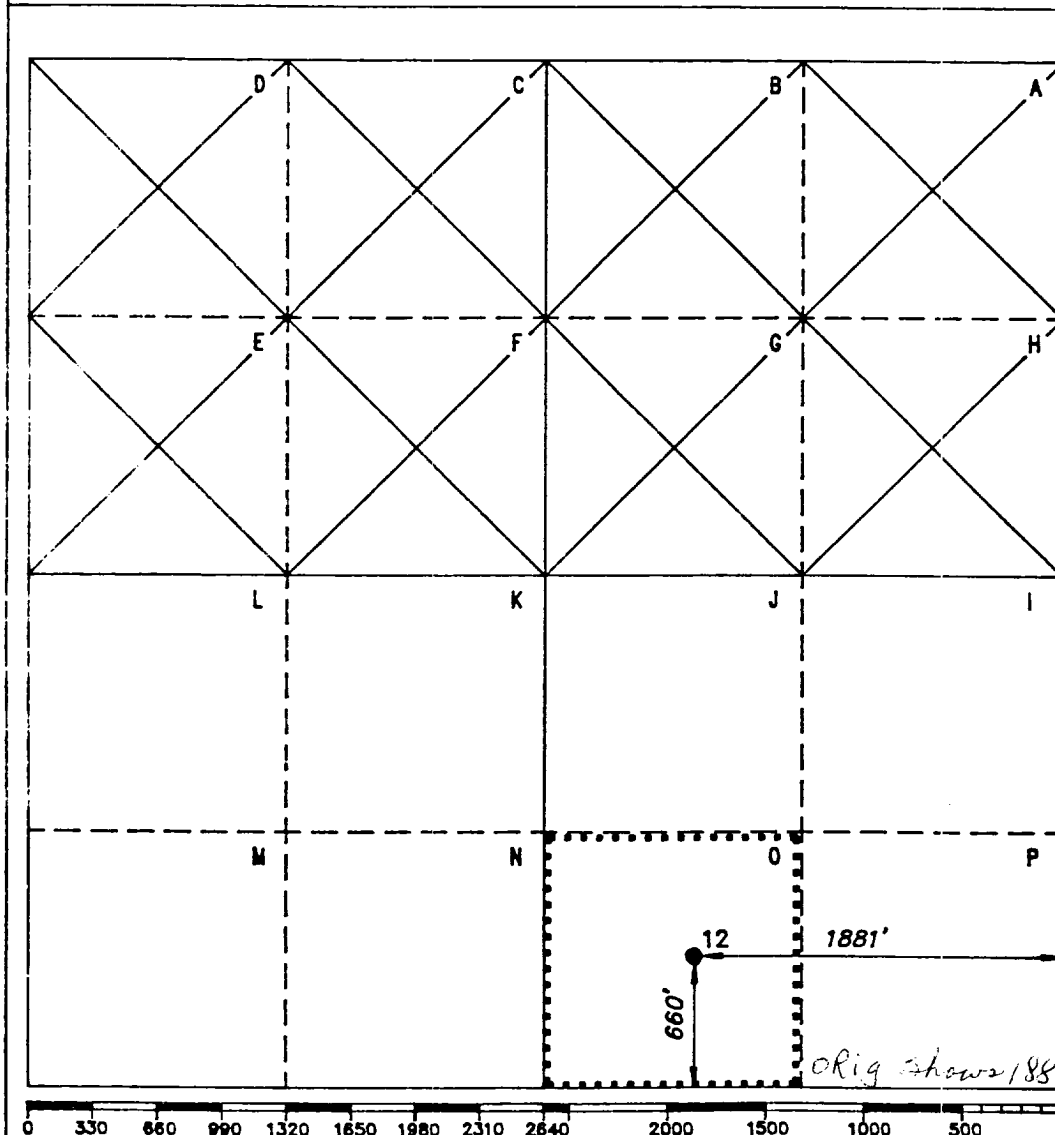
DISTRICT III
1000 Rio Brazos Rd., Aztec, NM 87410

WELL LOCATION AND ACREAGE DEDICATION PLAT

All distances must be from the outer boundaries of the Section.

Operator Exxon Corporation			Lease J. L. GREENWOOD		Well No. 12
Unit Letter 0	Section 9	Township 22S	Range 37E	NMPM	County LEA
Actual Footage Location of Well: 660 feet from the SOUTH line and 1881 1830 feet from the EAST line.					
Ground level Elev. -	Producing Formation CONNELL		Pool HARE SIMPSON		Dedicated Acreage: 40 Acres

- Outline the acreage dedicated to the subject well by colored pencil or hatchure marks on this plat below.
- If more than one lease is dedicated to the well, outline each and identify the ownership thereof (both as to working interest and royalty).
- If more than one lease of different ownership is dedicated to the well, have the interest of all owners been consolidated by communitization, unitization, force-pooling, etc.?
☐ Yes ☐ No If answer is "yes", type of consolidation _____
If answer is "no", list the owners and tract descriptions which have actually been consolidated. (Use reverse side of this form if necessary.) _____
No allowable will be assigned to the well until all interests have been consolidated (by communitization, unitization, forced-pooling, or otherwise) or until a non-standard unit, eliminating such interest, has been approved by the Division.



OPERATOR CERTIFICATION

I hereby certify that the information contained herein is true and complete to the best of my knowledge and belief.

Signature

Printed Name for

C. H. Harper

Position

PERMITS SUPERVISOR

Company Exxon Corporation

P.O. Box 1600-Midland, Tx.-7970

Date

July 20, 1989

SURVEYOR CERTIFICATION

I hereby certify that the well location shown on this plat was plotted from field notes of actual surveys made by me or under my supervision, and that the same is true and correct to the best of my knowledge and belief.

Date Surveyed

5-27-47

Signature & Seal of
Professional Surveyor

See original
survey

Certificate No.

2.5 Miles SW of EUNICE, New Mexico.

C.E. File No. WA-10294