

Magnolia Petroleum Company

PRODUCING DEPARTMENT

Location made Jan. 25th. 194 6Brunson-Argo Well No. 11Lea DistrictLense A-8 NM-633 area 320 Sec. 9, T 22S, R 37 E District TownshipLea County, New MexicoScale 1" = 500' N S E W

Gulf

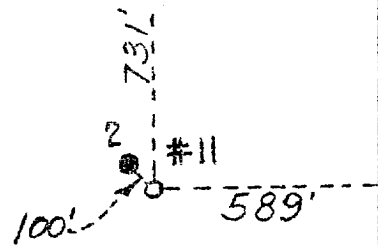
Cities Service et al

Olean

Peters-
Elders

Rowan

Magnolia Pet. Co.

N.G. Penrose-
Magnolia

Brunson-Argo

Humble

Skelly

Reserve 200'

Special instructions

Location changed on account of

Date work is commenced 194 Supt

Location approved by Plat made by R. M. Brady

Magnolia Petroleum Company
PRODUCING DEPARTMENT

Location for Well No. _____

File No. _____