



# NEW MEXICO ENERGY, MINERALS and NATURAL RESOURCES DEPARTMENT

GARY E. JOHNSON

Governor

Jennifer A. Salisbury

Cabinet Secretary

4/23/01

Lori Wrotenbery

Director

Oil Conservation Division

OIL CONSERVATION DIVISION  
P. O. BOX 2088  
SANTA FE, NEW MEXICO 87501

NSP-1768<SD>

RE: Proposed:

MC

DHC

NSL

NSP

SWD

WFX

PMX

X

Gentlemen:

I have examined the application for the:

Texaco E&P Inc

Operator

Baker B #4-D, 10-225-37e

Baker B #10-J, 10-225-37e

Lease & Well No.

Unit

S-T-R

30-025-10185

30-025-10190

and my recommendations are as follows:

OK most wells in this area in far areas  
will not drain more than 40 acres

Yours very truly,

Chris Williams

Supervisor, District 1



Texaco Exploration and Production Inc.  
Attn: Chris Williams

Oil and Gas  
Department

Attn: Mr. J.  
Morgan - XT-100

April 16, 2001

NMOCD

Attn: Chris Williams  
1625 N French Drive  
Hobbs, NM 88240

Re: Request for reinstatement of NSP-1768 and simultaneous dedication for wells: Baker "B" #4 and Baker "B" #10.

Dear Sir;

Texaco Exploration and Production Inc. respectfully requests that Administrative Order NSP-1768 be reinstated for an off pattern 80-acre non-standard oil spacing and proration unit within the South Eunice-San Andres Pool comprising of the following described acreage:

Township 22 South, Range 37 East, NMPM  
Section 10: W/2 SE/4.

In addition, we would like to request that this spacing and proration unit be simultaneously dedicated to production from both Baker "B" #4 (API 30-025-10185) and Baker "B" #10 (API 30-025-10190). As mentioned, both wells will produce from the South Eunice-San Andres Pool (Pool Code 24170) in this unit. The locations for these two wells can be seen on the attached plat and are as follows:

Baker "B" #4:	660 FSL, 1980 FEL – Sec. 10, T22S, R37E
Baker "B" #10	2310 FSL, 1650 FEL – Sec 10, T22S, R37E

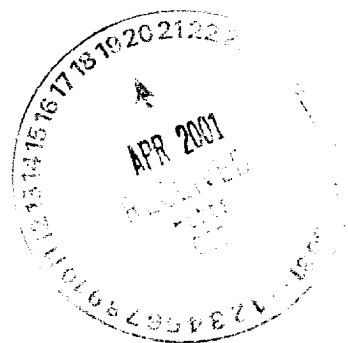
Texaco E&P and Devon Energy Corp. are the sole interest owners of the specified pool at the specified locations. Offset operators have been notified of our intent via copies of this letter. A copy of this request has also been sent to the state office.

If you have any questions concerning this matter, please contact Denise Leake at (915) 688-4752 or myself at (915) 688-4639. Thank you in advance for your attention to this matter.

Sincerely,

Tim Nein  
Production Engineer  
Texaco E&P

cc. file  
Attachments.



## DISTRICT I

P.O. Box 1980, Hobbs, NM 88241-1980

## DISTRICT II

P.O. Box Drawer DD, Artesia, NM 88211-0719

## DISTRICT III

1000 Rio Brazos Rd., Aztec, NM 87410

## DISTRICT IV

P.O. Box 2088, Santa Fe, NM 87504-2088

State of New Mexico

Energy, Minerals and Natural Resources Dep. ent

Form C-102

Revised February 10, 1999

Instructions on back

Submit to Appropriate District Office

State Lease - 4 Copie

Fee Lease - 3 Copie

AMENDED REPORT

## OIL CONSERVATION DIVISION

P.O. Box 2088

Santa Fe, New Mexico 87504-2088

## WELL LOCATION AND ACREAGE DEDICATION PLAT

1 API Number 30 025 10190	2 Pool Code 24170	3 Pool Name EUNICE SAN ANDRES, SOUTH
4 Property Code 010886	5 Property Name BAKER -B-	6 Well No. 10
7 OGRID Number 022351	8 Operator Name TEXACO EXPLORATION & PRODUCTION INC.	9 Elevation

## 10 Surface Location

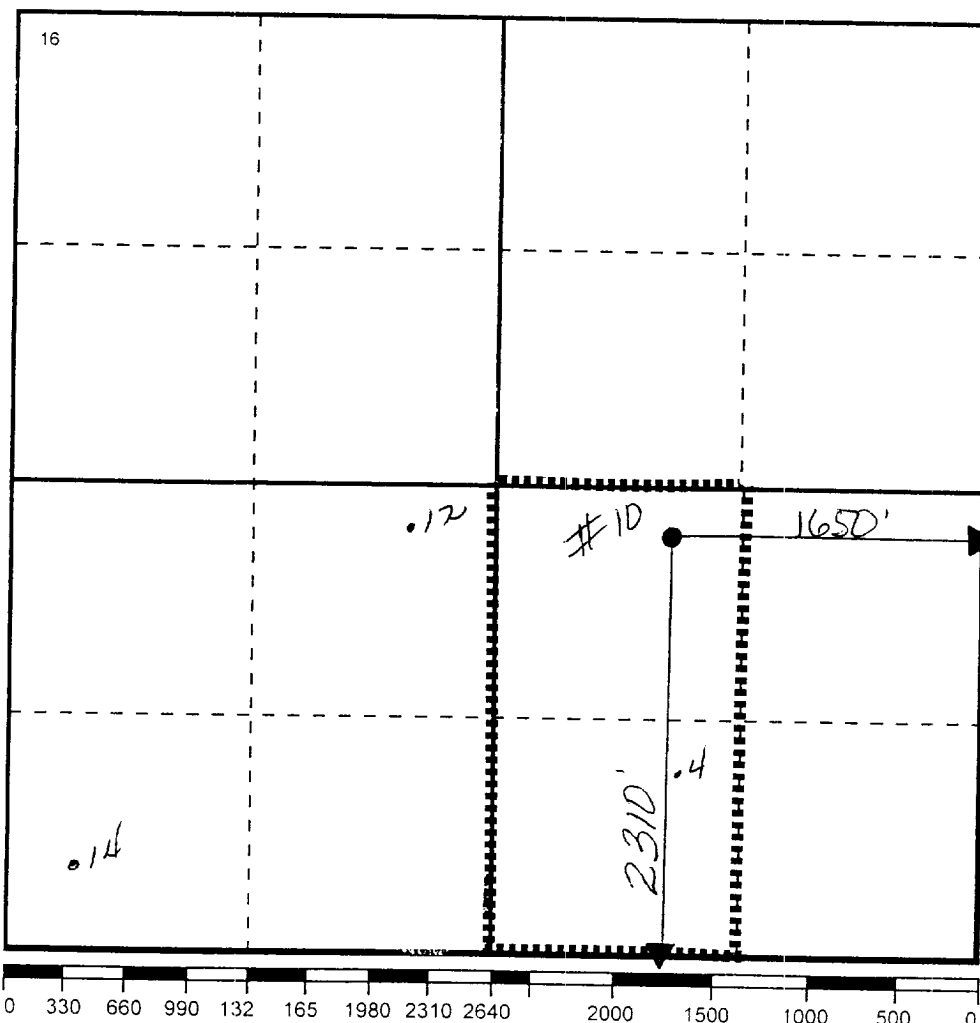
UI or lot no	Section	Township	Range	Lot.Idn	Feet From The	North/South Line	Feet From The	East/West Line	County
J	10	22S	37E		2310	SOUTH	1650	EAST	LEA

## 11 Bottom Hole Location If Different From Surface

UI or lot no	Section	Township	Range	Lot.Idn	Feet From The	North/South Line	Feet From The	East/West Line	County
--------------	---------	----------	-------	---------	---------------	------------------	---------------	----------------	--------

12 Dedicated Acre 80	13 Joint or Infill No	14 Consolidation Code	15 Order No.
-------------------------	--------------------------	-----------------------	--------------

NO ALLOWABLE WILL BE ASSIGNED TO THIS COMPLETION UNTIL ALL INTERESTS HAVE BEEN CONSOLIDATED  
OR A NON-STANDARD UNIT HAS BEEN APPROVED BY THE DIVISION



## 17 OPERATOR CERTIFICATION

I hereby certify that the information contained herein is true and complete to the best of my knowledge and belief

Signature

Printed Name

J. Denise Leake

Position

Engineering Assistant

Date

4/17/01

## 18 SURVEYOR CERTIFICATION

I hereby certify that the well location shown on this plat was plotted from field notes of actual surveys made by me or under my supervision, and that the same is true and correct to the best of my knowledge and belief.

Date Surveyed

Signature & Seal of  
Professional Surveyor

Certificate No.

