

DISTRICT I

P.O. Box 1980, Hobbs, NM 88241-1980

DISTRICT II

P.O. Box Drawer DD, Artesia, NM 88211-0719

DISTRICT III

1000 Rio Brazos Rd., Aztec, NM 87410

DISTRICT IV

P.O. Box 2088, Santa Fe, NM 87504-2088

State of New Mexico

Energy, Minerals and Natural Resources Department

Form C-101

Revised February 10, 1999

Instructions on back

Submit to Appropriate District Office

State Lease - 6 Copies

Fee Lease - 5 Copies

OIL CONSERVATION DIVISION

P.O. Box 2088

Santa Fe, New Mexico 87504-2088

AMENDED REPORT

APPLICATION FOR PERMIT TO DRILL, RE-ENTER, DEEPEN, PLUGBACK, OR ADD A ZONE

¹ Operator Name and Address TEXACO EXPLORATION & PRODUCTION INC. 205 E. Bender, HOBBS, NM 88240		Permit Expires 1 Year From Approval Date Unless Drilling Underway <i>Plug-Back</i>		² OGRID Number 022351
⁴ Property Code 010886		⁵ Property Name BAKER B		³ API Number 30 025 10185
				⁶ Well No. 4

⁷ Surface Location

UI or lot no	Section	Township	Range	Lot.Idn	Feet From The	North/South Line	Feet From The	East/West Line	County
O	10	22S	37E		660	SOUTH	1980	EAST	LEA

⁸ Proposed Bottom Hole Location If Different From Surface

UI or lot no	Section	Township	Range	Lot.Idn	Feet From The	North/South Line	Feet From The	East/West Line	County
⁹ Proposed Pool 1 EUNICE SAN ANDRES, SOUTH					¹⁰ Proposed Pool 2				

¹¹ Work Type Code P	¹² WellType Code 0	¹³ Rotary or C.T.	¹⁴ Lease Type Code P	¹⁵ Ground Level Elevation
¹⁶ Multiple No	¹⁷ Proposed Depth 5169'	¹⁸ Formation SAN ANDRES	¹⁹ Contractor	²⁰ Spud Date 5/15/01

²¹ Proposed Casing and Cement Program

SIZE OF HOLE	SIZE OF CASING	WEIGHT PER FOOT	SETTING DEPTH	SACKS OF CEMENT	EST. TOP
NO CHANGE					

²² Describe the proposed program. If this application is to DEEPEN or PLUG BACK give the data on the present productive zone and proposed new productive zone. Describe the blowout prevention program, if any. Use additional sheets if necessary.

TEXACO INTENDS TO RECOMPLETE THE SUBJECT WELL IN THE EUNICE SAN ANDRES, SOUTH POOL. INTENDED PROCEDURE IS AS FOLLOWS:

TEST ANCHORS & REPLACE, MIRU. TOH W/TBG. TIH W/BIT & SCRAPER & TAG PBTD @ 5080'. MIRU WIRELINE SERVICES & SET CIBP @ 5040. CHART.
CIRC W/2% KCL. TIH W/BAILER & DUMP 35' CMT ON TOP OF CIBP. TIH W/LOGGING TOOL & RUN GR,CCL,& CNL FR 2800-5000. RUN CBL FR 4800-SURF. TIH W/PERF GUN & PERFINTERVALS DEPENDING ON LOG ANALYSIS. TIH W/PKR & SPOT 5 BBLS 15% HCL ACID ACR PERFS. SET PKR WITHIN 50' OF TOP PERF. PUMP 5000 GALS 15% HCL ACID INTO FORMATION & OVER FLUSH W/20 BBLS 2% KCL. FLOW/SWAB BACK. PLACE WELL ON PRODUCTION.

²³ I hereby certify that the rules and regulations of the Oil Conservation Division have been complied with and that the information given above is true and complete to the best of my knowledge and belief.

Signature *J. Denise Leake*

Printed Name J. Denise Leake

Title Engineering Assistant

Date 5/3/01

Telephone 397-0405

OIL CONSERVATION DIVISION

Approved By: *[Signature]*

Title:

Approval Date:

Expiration Date:

Conditions of Approval:
Attached

DISTRICT I

P.O. Box 1980, Hobbs, NM 88241-1980

DISTRICT II

P.O. Box Drawer DD, Artesia, NM 88211-0719

DISTRICT III

1000 Rio Brazos Rd., Aztec, NM 87410

DISTRICT IV

P.O. Box 2088, Santa Fe, NM 87504-2088

State of New Mexico

Energy, Minerals and Natural Resources Department

Form C-102

Revised February 10, 1999

Instructions on back

Submit to Appropriate District Office

State Lease - 4 Copies

Fee Lease - 3 Copies

AMENDED REPORT

OIL CONSERVATION DIVISION

P.O. Box 2088

Santa Fe, New Mexico 87504-2088

WELL LOCATION AND ACREAGE DEDICATION PLAT

1 API Number 30 025 10185	2 Pool Code 24170	3 Pool Name EUNICE SAN ANDRES. SOUTH
4 Property Code 010886	5 Property Name BAKER B	6 Well No. 4
7 OGRID Number 022351	8 Operator Name TEXACO EXPLORATION & PRODUCTION INC.	9 Elevation

10 Surface Location

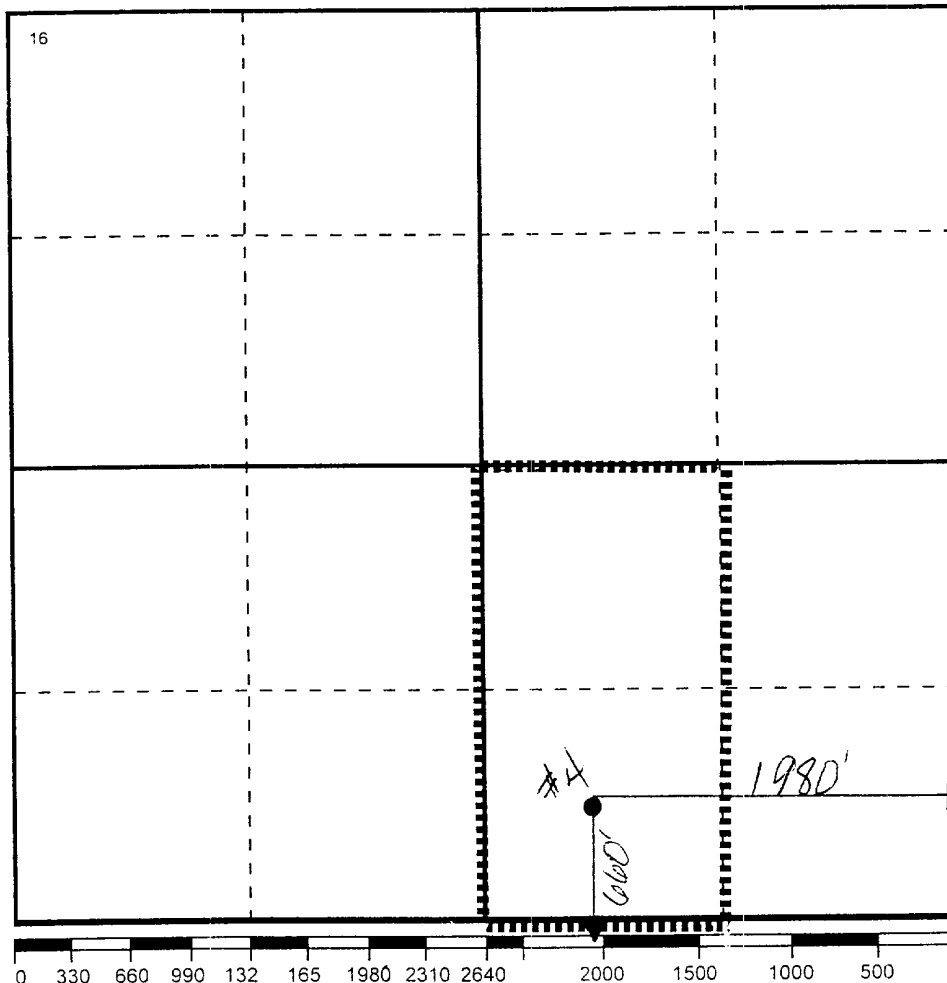
UI or lot no	Section	Township	Range	Lot. Idn	Feet From The	North/South Line	Feet From The	East/West Line	County
O	10	22S	37E		660	SOUTH	1980	EAST	LEA

11 Bottom Hole Location If Different From Surface

UI or lot no	Section	Township	Range	Lot. Idn	Feet From The	North/South Line	Feet From The	East/West Line	County
--------------	---------	----------	-------	----------	---------------	------------------	---------------	----------------	--------

12 Dedicated Acre 80	13 Joint or Infill No	14 Consolidation Code	15 Order No.
-------------------------	--------------------------	-----------------------	--------------

NO ALLOWABLE WILL BE ASSIGNED TO THIS COMPLETION UNTIL ALL INTERESTS HAVE BEEN CONSOLIDATED
OR A NON-STANDARD UNIT HAS BEEN APPROVED BY THE DIVISION



17 OPERATOR CERTIFICATION

I hereby certify that the information contained herein is true and complete to the best of my knowledge and belief

Signature

Printed Name

J. Denise Leake

Position

Engineering Assistant

Date

5/3/01

18 SURVEYOR CERTIFICATION

I hereby certify that the well location shown on this plat was plotted from field notes of actual surveys made by me or under my supervision, and that the same is true and correct to the best of my knowledge and belief.

Date Surveyed

Signature & Seal of Professional Surveyor

Certificate No.