

NEW MEXICO OIL CONSERVATION COMMISSION  
SOUTHEAST NEW MEXICO PACKER LEAKAGE TEST

Operator <b>Scally Oil Company</b>			Lease <b>Block 572</b>			Well No. <b>15</b>	
Location of Well	Unit <b>J</b>	Sec <b>10</b>	Twp <b>22-S</b>	Rge <b>37-E</b>	County <b>Lee</b>		
	Name of Reservoir or Pool		Type of Prod (Oil or Gas)	Method of Prod Flow, Art Lift	Prod. Medium (Tbg or Csg)	Choke Size	
Upper Compl	<b>Elmore</b>		<b>Gas</b>	<b>Flow</b>	<b>Tbg.</b>	<b>5/8"</b>	
Lower Compl	<b>Tabb</b>		<b>Gas</b>	<b>Flow</b>	<b>Tbg.</b>	<b>3/4"</b>	

FLOW TEST NO. 1

Both zones shut-in at (hour, date): 9:00 A.M. October 1, 1962

	Upper Completion	Lower Completion
Well opened at (hour, date):	<u>9:00 AM October 2, 1962</u>	
Indicate by ( X ) the zone producing.....		<u>XX</u>
Pressure at beginning of test.....	<u>1525</u>	<u>1430</u>
Stabilized? (Yes or No).....	<u>No</u>	<u>No</u>
Maximum pressure during test.....	<u>1525</u>	<u>1430</u>
Minimum pressure during test.....	<u>1270</u>	<u>1090</u>
Pressure at conclusion of test.....	<u>1270</u>	<u>1170</u>
Pressure change during test (Maximum minus Minimum).....	<u>155</u>	<u>340</u>
Was pressure change an increase or a decrease?.....	<u>Decrease</u>	<u>Decrease</u>
Well closed at (hour, date):	<u>9:00 AM October 3, 1962</u>	Total Time On Production <u>24 hrs.</u>
Oil Production	Gas Production	
During Test: <u>4.38</u> bbls; Grav. <u>71 degrees</u>	During Test <u>2229.0</u>	MCF; GOR <u>52.595</u>
Remarks <u>Tabb side</u>		

FLOW TEST NO. 2

Well opened at (hour, date):	<u>9:00 AM October 4, 1962</u>	Upper Completion	Lower Completion
Indicate by ( X ) the zone producing.....		<u>XX</u>	
Pressure at beginning of test.....	<u>1562</u>	<u>1530</u>	
Stabilized? (Yes or No).....	<u>No</u>	<u>No</u>	
Maximum pressure during test.....	<u>1562</u>	<u>1550</u>	
Minimum pressure during test.....	<u>927</u>	<u>1130</u>	
Pressure at conclusion of test.....	<u>927</u>	<u>1130</u>	
Pressure change during test (Maximum minus Minimum).....	<u>675</u>	<u>420</u>	
Was pressure change an increase or a decrease?.....	<u>Decrease</u>	<u>Decrease</u>	
Well closed at (hour, date):	<u>9:00 A.M. October 5, 1962</u>	Total time on Production	<u>24 hrs.</u>
Oil Production	Gas Production		
During Test: <u>24.56</u> bbls; Grav. <u>70.4 degrees</u>	During Test <u>1631.0</u>	MCF; GOR	<u>65.240</u>
Remarks <u>Elmore side</u>			

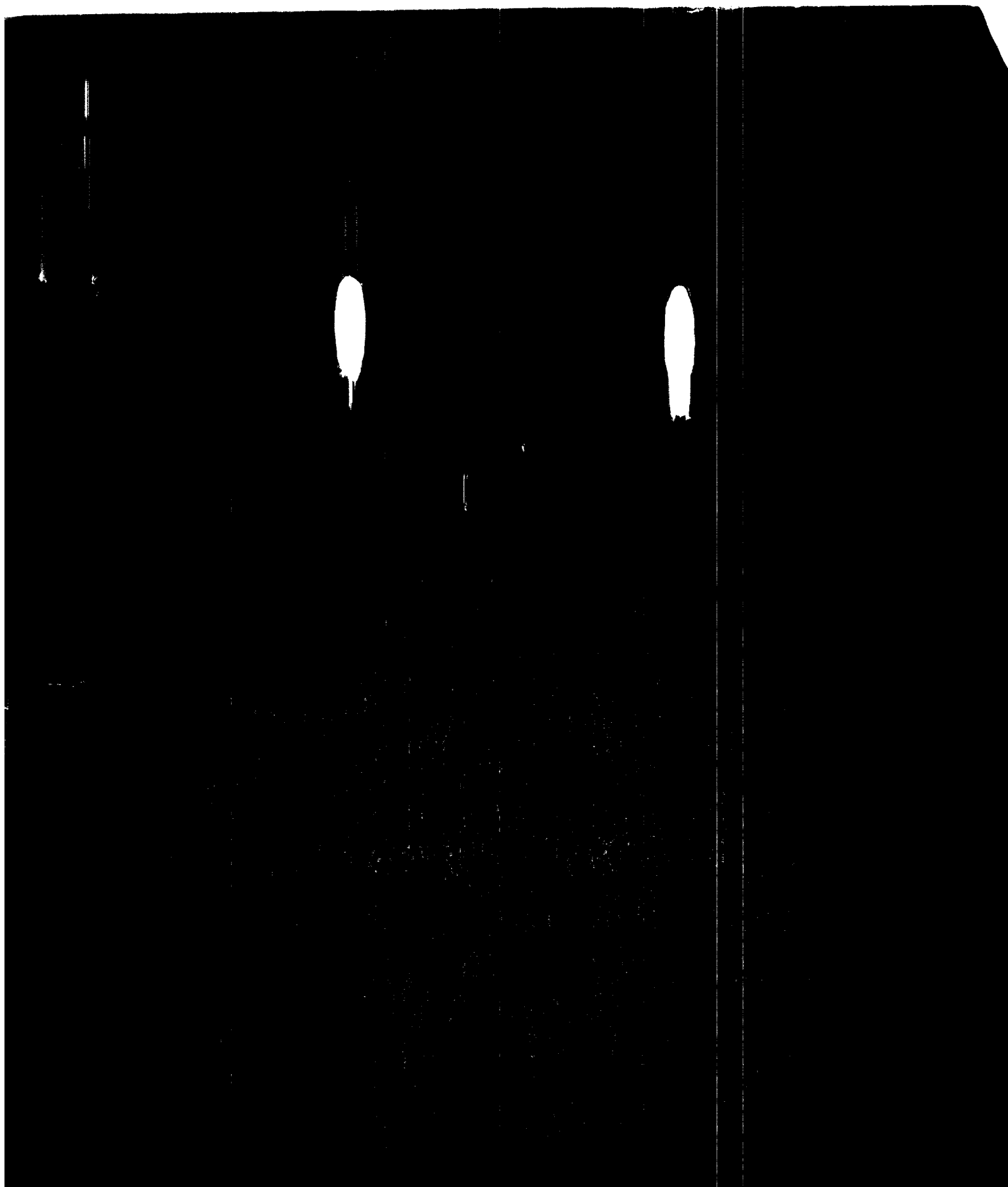
I hereby certify that the information herein contained is true and complete to the best of my knowledge.

Approved \_\_\_\_\_ 19 \_\_\_\_\_  
New Mexico Oil Conservation Commission

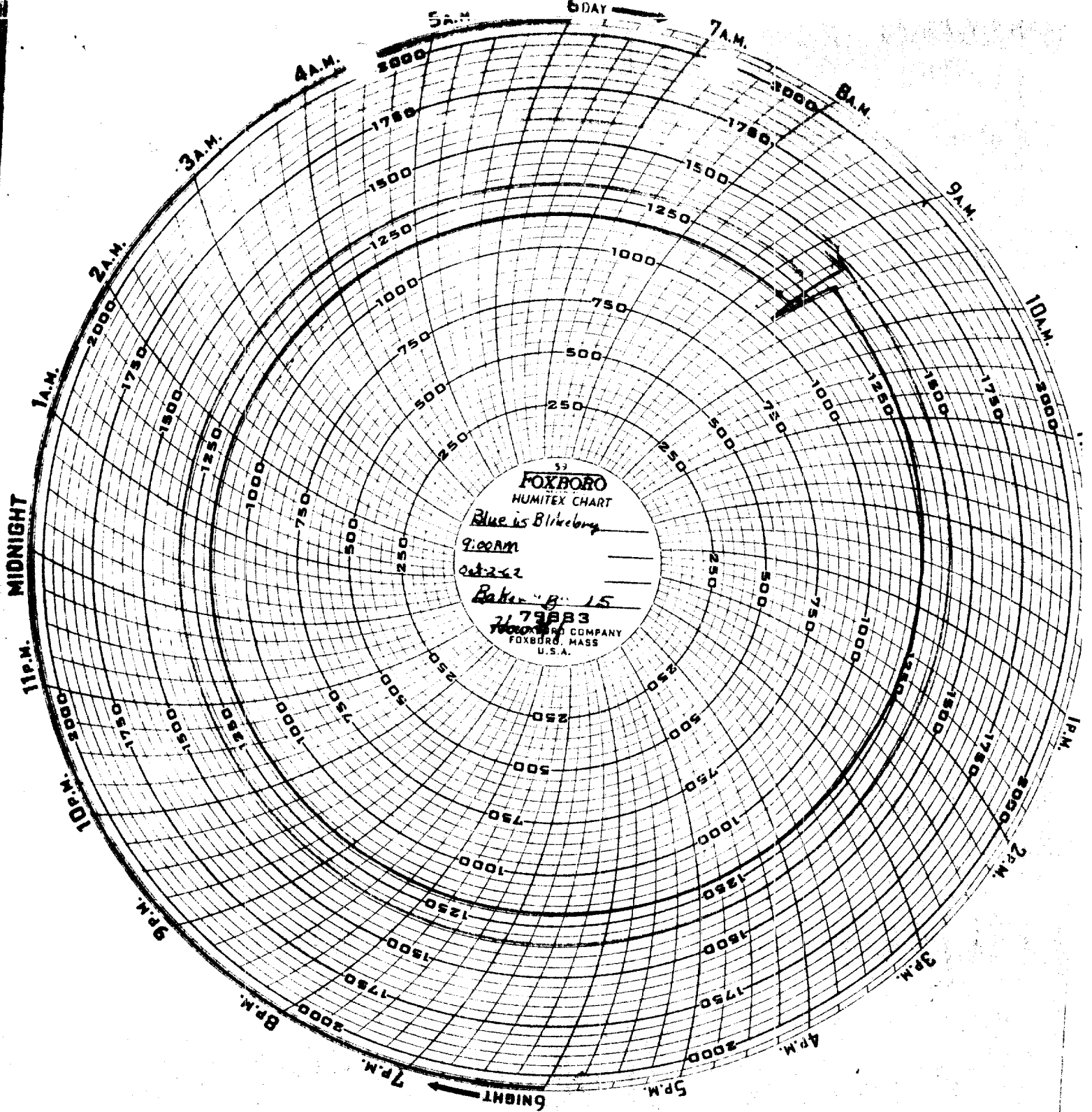
By Charles J. Love  
Charles J. Love  
Title District Engineer  
Date \_\_\_\_\_

Operator Scally Oil Company



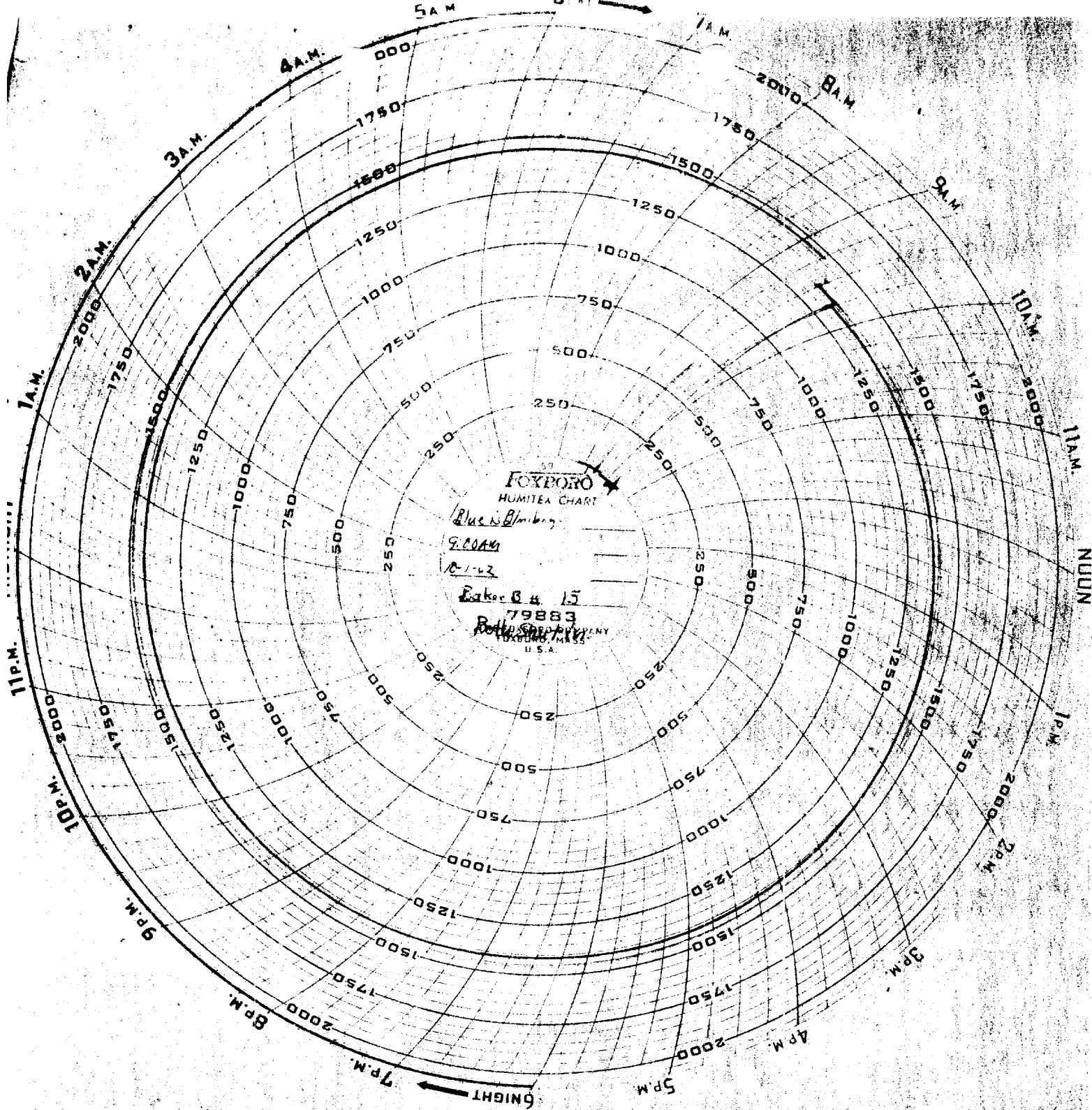






ILLEGIBLE





FOXPORT  
HUMITEC CHART

Blue is Blowing

9:00 AM

C-1-42

Eaker B 4 15

79883

Roth's Supply Co. Inc.  
NEW YORK, N.Y.  
U.S.A.

6 NIGHT





