

NO. OF COPIES RECEIVED	
DISTRIBUTION	
SANTA FE	
FILE	
U.S.G.S.	
LAND OFFICE	
OPERATOR	

NEW MEXICO OIL CONSERVATION COMMISSION

Form C-101  
Revised 1-1-65

5A. Indicate Type of Lease  
STATE  FEE

5. State Oil & Gas Lease No.

APPLICATION FOR PERMIT TO DRILL, DEEPEN, OR PLUG BACK

1a. Type of Work DRILL <input type="checkbox"/> DEEPEN <input checked="" type="checkbox"/> PLUG BACK <input type="checkbox"/>		7. Unit Agreement Name
b. Type of Well OIL WELL <input checked="" type="checkbox"/> GAS WELL <input checked="" type="checkbox"/> OTHER <input type="checkbox"/> SINGLE ZONE <input type="checkbox"/> MULTIPLE ZONE <input checked="" type="checkbox"/>		8. Farm or Lease Name S. E. Long
2. Name of Operator Mobil Oil Corporation		9. Well No. 3
3. Address of Operator P. O. Box 633, Midland, Texas 79701 Drinkard		10. Field and Pool, or Wildcat & Wantz-Granite Wash
4. Location of Well UNIT LETTER 0 LOCATED 660' FEET FROM THE South LINE AND 1980' FEET FROM THE East LINE OF SEC. 11 TWP. 22S RGE. 37E NMPM		12. County Lea
19. Proposed Depth 7300'		18A. Formation Drinkard & Wantz-Granite Wash
21. Elevations (Show whether DP, RT, etc.) 3355'		20. Rotary or C.T. Rotary
21A. Kind & Status Plug. Bond On File		22. Approx. Date Work will start As soon as possible
21B. Drilling Contractor Unknown		

23. PROPOSED CASING AND CEMENT PROGRAM

SIZE OF HOLE	SIZE OF CASING	WEIGHT PER FOOT	SETTING DEPTH	SACKS OF CEMENT	EST. TOP

This well is presently completed in the Paddock zone at a total depth of 5220 ft. Permission is requested to plug and abandon the Paddock, deepen to 7300 ft and dually complete as an oil well in the Wantz-Granite Wash (7100'-7200'), and as a gas well in the Drinkard pool (6300').

APPROVAL VALID  
FOR 90 DAYS UNLESS  
DRILLING COMMENCED,

EXPIRES 10-12-74

IN ABOVE SPACE DESCRIBE PROPOSED PROGRAM: IF PROPOSAL IS TO DEEPEN OR PLUG BACK, GIVE DATA ON PRESENT PRODUCTIVE ZONE AND PROPOSED NEW PRODUCTIVE ZONE. GIVE BLOWOUT PREVENTER PROGRAM, IF ANY.

I hereby certify that the information above is true and complete to the best of my knowledge and belief.

Signed A. D. Bond Title Proration Staff Assistant Date July 10, 1974

(This space for State Use)

APPROVED BY [Signature] TITLE SUPERVISOR DATE  

CONDITIONS OF APPROVAL, IF ANY:

NEW MEXICO OIL CONSERVATION COMMISSION  
WELL LOCATION AND ACREAGE DEDICATION

Form C-102  
Supersedes C-128  
Effective 1-1-65

All distances must be from the outer boundaries of the Section

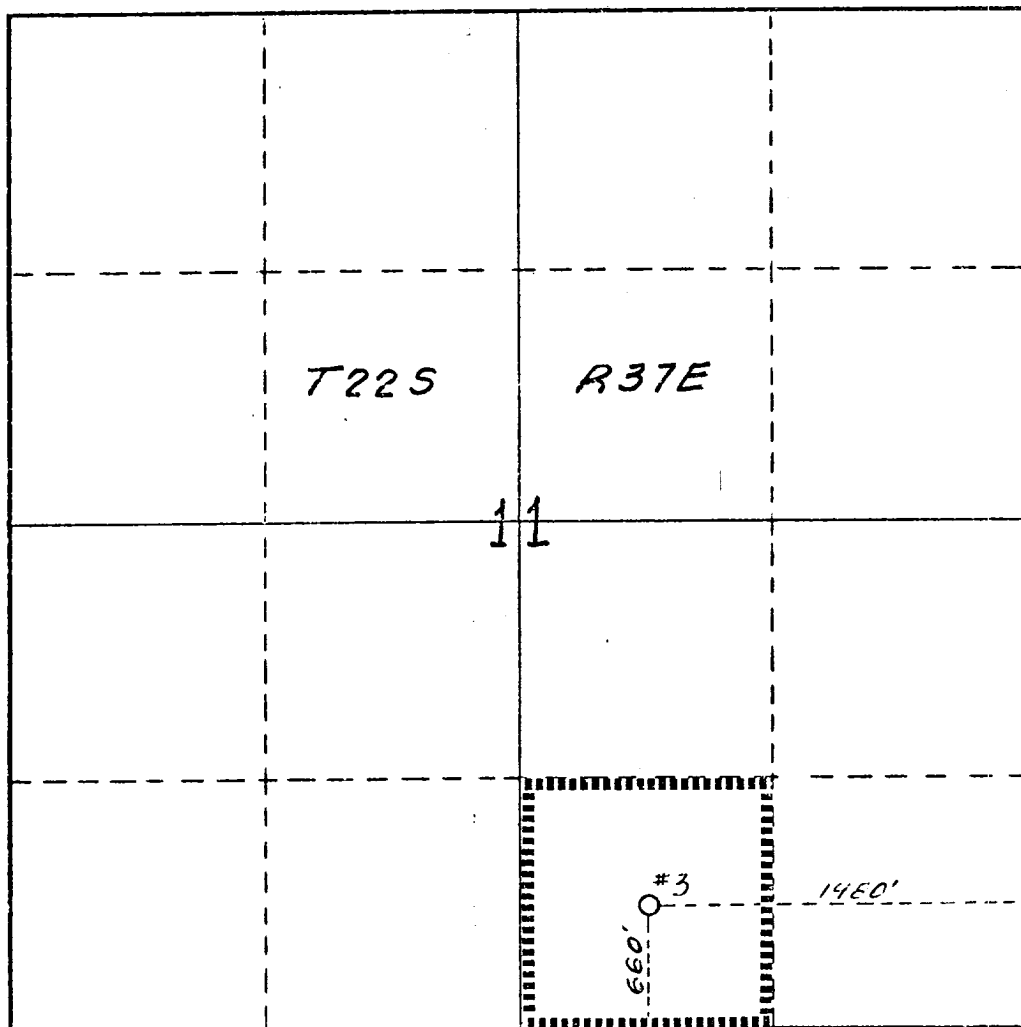
Operator <b>Mobil Oil Corporation</b>			Lease <b>S. E. Long</b>		Well No. <b>3</b>
Unit Letter <b>0</b>	Section <b>11</b>	Township <b>22S</b>	Range <b>37E</b>	County <b>Lea</b>	
Actual Footage Location of Well: <b>660'</b> feet from the <b>South</b> line and <b>1980'</b> feet from the <b>East</b> line					
Ground Level Elev. <b>3355'</b>	Producing Formation <b>Drinkard</b>		Pool <b>Drinkard</b>	Dedicated Acreage: <b>40</b> Acres	

1. Outline the acreage dedicated to the subject well by colored pencil or hachure marks on the plat below.
2. If more than one lease is dedicated to the well, outline each and identify the ownership thereof (both as to working interest and royalty).
3. If more than one lease of different ownership is dedicated to the well, have the interests of all owners been consolidated by communitization, unitization, force-pooling, etc?

Yes  No If answer is "yes," type of consolidation \_\_\_\_\_

If answer is "no," list the owners and tract descriptions which have actually been consolidated. (Use reverse side of this form if necessary.) \_\_\_\_\_

No allowable will be assigned to the well until all interests have been consolidated (by communitization, unitization, forced-pooling, or otherwise) or until a non-standard unit, eliminating such interests, has been approved by the Commission.



CERTIFICATION

I hereby certify that the information contained herein is true and complete to the best of my knowledge and belief.

*A. D. Bond*

Name  
**A. D. Bond**  
Position  
**Proration Staff Assistant**

Company  
**Mobil Oil Corporation**

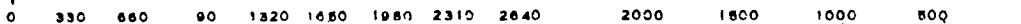
Date  
**July 10, 1974**

I hereby certify that the well location shown on this plat was plotted from field notes of actual surveys made by me or under my supervision, and that the same is true and correct to the best of my knowledge and belief.

Date Surveyed

Registered Professional Engineer and/or Land Surveyor

Certificate No.



NEW MEXICO OIL CONSERVATION COMMISSION  
WELL LOCATION AND ACREAGE DEDICATION

Form C-102  
Supersedes C-128  
Effective 1-1-65

All distances must be from the outer boundaries of the Section.

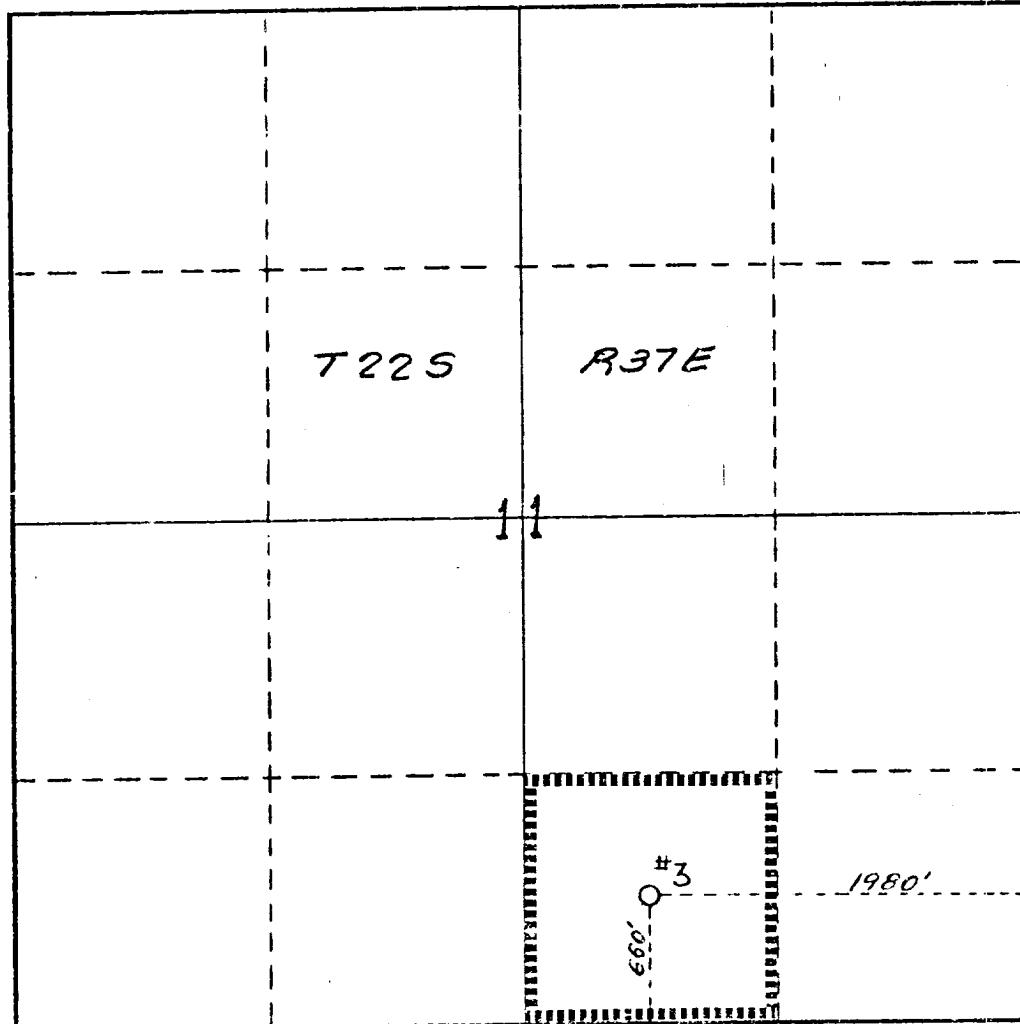
Operator <b>Mobil Oil Corporation</b>		Lease <b>S. E. Long</b>		Well No. <b>3</b>	
Unit Letter <b>0</b>	Section <b>11</b>	Township <b>22S</b>	Range <b>37E</b>	County <b>Lea</b>	
Actual Footage Location of Well: <b>660'</b> feet from the <b>South</b> line and <b>1980'</b> feet from the <b>East</b> line					
Ground Level Elev. <b>3355'</b>	Producing Formation <b>Wantz-Granite Wash</b>		Pool <b>Wantz-Granite Wash</b>	Dedicated Acreage: <b>40</b> Acres	

1. Outline the acreage dedicated to the subject well by colored pencil or hachure marks on the plat below.
2. If more than one lease is dedicated to the well, outline each and identify the ownership thereof (both as to working interest and royalty)
3. If more than one lease of different ownership is dedicated to the well, have the interests of all owners been consolidated by communitization, unitization, force-pooling, etc?

Yes  No If answer is "yes," type of consolidation \_\_\_\_\_

If answer is "no," list the owners and tract descriptions which have actually been consolidated. (Use reverse side of this form if necessary.) \_\_\_\_\_

No allowable will be assigned to the well until all interests have been consolidated (by communitization, unitization, forced-pooling, or otherwise) or until a non-standard unit, eliminating such interests, has been approved by the Commission.



CERTIFICATION

I hereby certify that the information contained herein is true and complete to the best of my knowledge and belief.

*A. D. Bond*

Name	<b>A. D. Bond</b>
Position	<b>Proration Staff Assistant</b>
Company	<b>Mobil Oil Corporation</b>
Date	<b>July 10, 1974</b>

I hereby certify that the well location shown on this plat was plotted from field notes of actual surveys made by me or under my supervision, and that the same is true and correct to the best of my knowledge and belief.

Date Surveyed	
Registered Professional Engineer and/or Land Surveyor	

Certificate No. \_\_\_\_\_

