

District I  
PO Box 1980, Hobbs, NM 88241-1980  
District II  
PO Drawer DD, A., NM 88211-0719  
District III  
1000 Rio Brazos Rd., Aztec, NM 87410  
District IV  
PO Box 2088, Santa Fe, NM 87504-2088

State of New Mexico  
Energy, Minerals and Natural Resources Department

OIL CONSERVATION DIVISION  
P.O. Box 2088  
Santa Fe, New Mexico 87504-2088

Form C-  
Revised February 10, 1995  
Instructions on back  
Submit to Appropriate District Office  
State Lease - 4 Copies  
Fee Lease - 3 Copies

☐ AMENDED REPORT

WELL LOCATION AND ACREAGE DEDICATION PLAT

API Number <b>30-025-10206</b>		Pool Code <b>72480</b>		Pool Name <b>BLINEBRY GAS</b>	
Property Code <b>8030</b>		Property Name <b>S.E. LONG</b>			
OGRID No. <b>15144</b>		Operator Name <b>MOBIL EXPLORATION &amp; PRODUCING U.S. INC., AS AGENT FOR MOBIL PRODUCING TEXAS &amp; NEW MEXICO</b>			
		Well Number <b>5</b>		Elevation	

10 Surface Location									
UI or lot no. <b>0</b>	Section <b>11</b>	Township <b>22S</b>	Range <b>37E</b>	Lot. Idn	Feet from the <b>660</b>	North/South Line <b>SOUTH</b>	Feet from the <b>1880</b>	East/West line <b>EAST</b>	County <b>LEA</b>

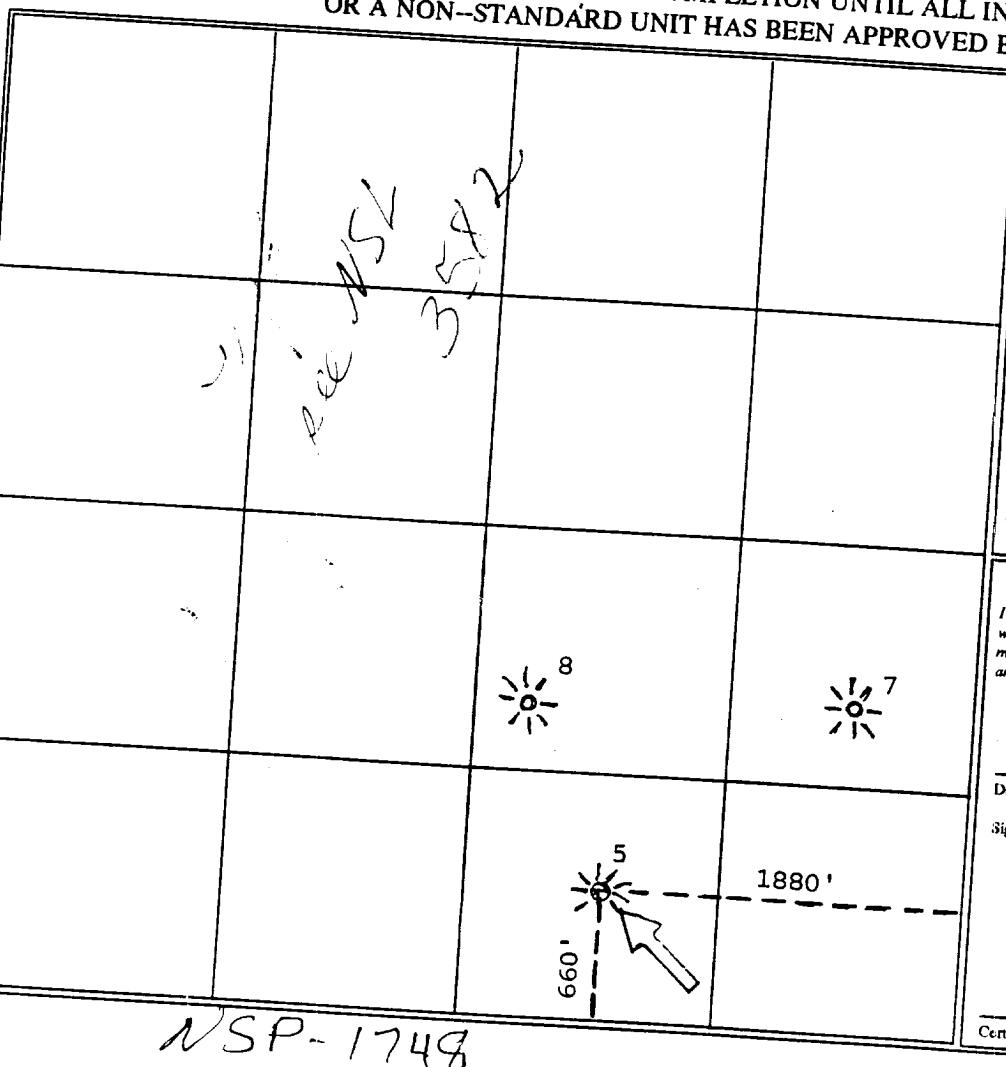
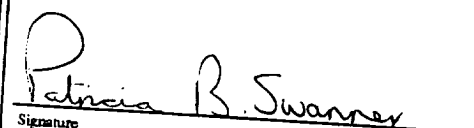
  

11 Bottom Hole Location If Different From Surface									
UL or lot no.	Section	Township	Range	Lot. Idn	Feet from the	North/South Line	Feet from the	East/West line	County

12 Dedicated Acres <b>120 3 WELLS</b>		13 Joint or Infill <b>JOINT</b>		14 Consolidation Code <b>NSL-3582(SD)</b>		15 Order No.			
--	--	------------------------------------	--	--	--	--------------	--	--	--

NO ALLOWABLE WILL BE ASSIGNED TO THIS COMPLETION UNTIL ALL INTERESTS HAVE BEEN CONSOLIDATED  
OR A NON-STANDARD UNIT HAS BEEN APPROVED BY THE DIVISION

				<b>17 OPERATOR CERTIFICATION</b> I hereby certify that the information contained herein is true and complete to the best of my knowledge and belief.   Signature <b>Patricia B. Swanner</b> Printed Name <b>Reg. Tech/Asst.</b> Title <b>11/30/95</b> Date	
				<b>18 SURVEYOR CERTIFICATION</b> I hereby certify that the well location shown on this plat was plotted from field notes of actual surveys made by me or under my supervision, and that the same is true and correct to the best of my belief.  Date of Survey  Signature and Seal of Professional Surveyor:  Certificate Number	

NSP-1748

District I  
PO Box 1980, Hobbs, NM 87411-1980  
District II  
PO Drawer DD, Artesia, NM 88211-0719  
District III  
1008 Rio Bravo Rd., Aztec, NM 87410  
District IV  
PO Box 2088, Santa Fe, NM 87504-2088

State of New Mexico  
Energy, Minerals and Natural Resources Department

**OIL CONSERVATION DIVISION**  
**P.O. Box 2088**  
**Santa Fe, New Mexico 87504-2088**

Form C-102  
Revised February 10, 1994  
Instructions on back  
Submit to Appropriate District Office  
State Lease - 4 Copies  
Fee Lease - 3 Copies

☐ AMENDED REPORT

**WELL LOCATION AND ACREAGE DEDICATION PLAT**

<sup>1</sup> API Number 30-025-10206		<sup>2</sup> Pool Code 72480		<sup>3</sup> Pool Name BLINEBRY GAS	
<sup>4</sup> Property Code 8030		<sup>5</sup> Property Name S.E. LONG			<sup>6</sup> Well Number 5
<sup>7</sup> OGRID No. OG6225R		<sup>8</sup> Operator Name Mobil Exploration & Producing U.S. Inc. As Agent for Mobil Producing TX & NM Inc.			<sup>9</sup> Elevation 3346

<sup>10</sup> Surface Location

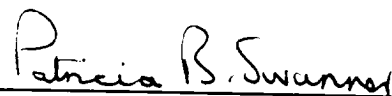
UL or lot no.	Section	Township	Range	Lot. Idn	Feet from the	North/South Line	Feet from the	East/West line	County
0	11	22S	37E		660	SOUTH	1880	EAST	LEA

<sup>11</sup> Bottom Hole Location If Different From Surface

UL or lot no.	Section	Township	Range	Lot. Idn	Feet from the	North/South Line	Feet from the	East/West line	County

<sup>12</sup> Dedicated Acres 160 3 WELLS	<sup>13</sup> Joint or Infill JOINT	<sup>14</sup> Consolidation Code	<sup>15</sup> Order No. SD-93-3
--	--	----------------------------------	------------------------------------

NO ALLOWABLE WILL BE ASSIGNED TO THIS COMPLETION UNTIL ALL INTERESTS HAVE BEEN CONSOLIDATED  
OR A NON--STANDARD UNIT HAS BEEN APPROVED BY THE DIVISION

				<sup>17</sup> OPERATOR CERTIFICATION I hereby certify that the information contained herein is true and complete to the best of my knowledge and belief.   Signature Patricia B. Swanner Printed Name Env.Reg./LP Asst. III Title 5/12/94 Date
				<sup>18</sup> SURVEYOR CERTIFICATION I hereby certify that the well location shown on this plat was plotted from field notes of actual surveys made by me or under my supervision, and that the same is true and correct to the best of my belief.  Date of Survey Signature and Seal of Professional Surveyor: Certificate Number

RECEIVED

MAY 17 1994

COO HODDS  
OFFICE

NEW MEXICO OIL CONSERVATION COMMISSION  
WELL LOCATION AND ACREAGE DEDICATION PLAT

Form O-110  
Supersedes C-128  
Effective 1-1-55

All distances must be from the outer boundaries of the Section.

30.025-10206

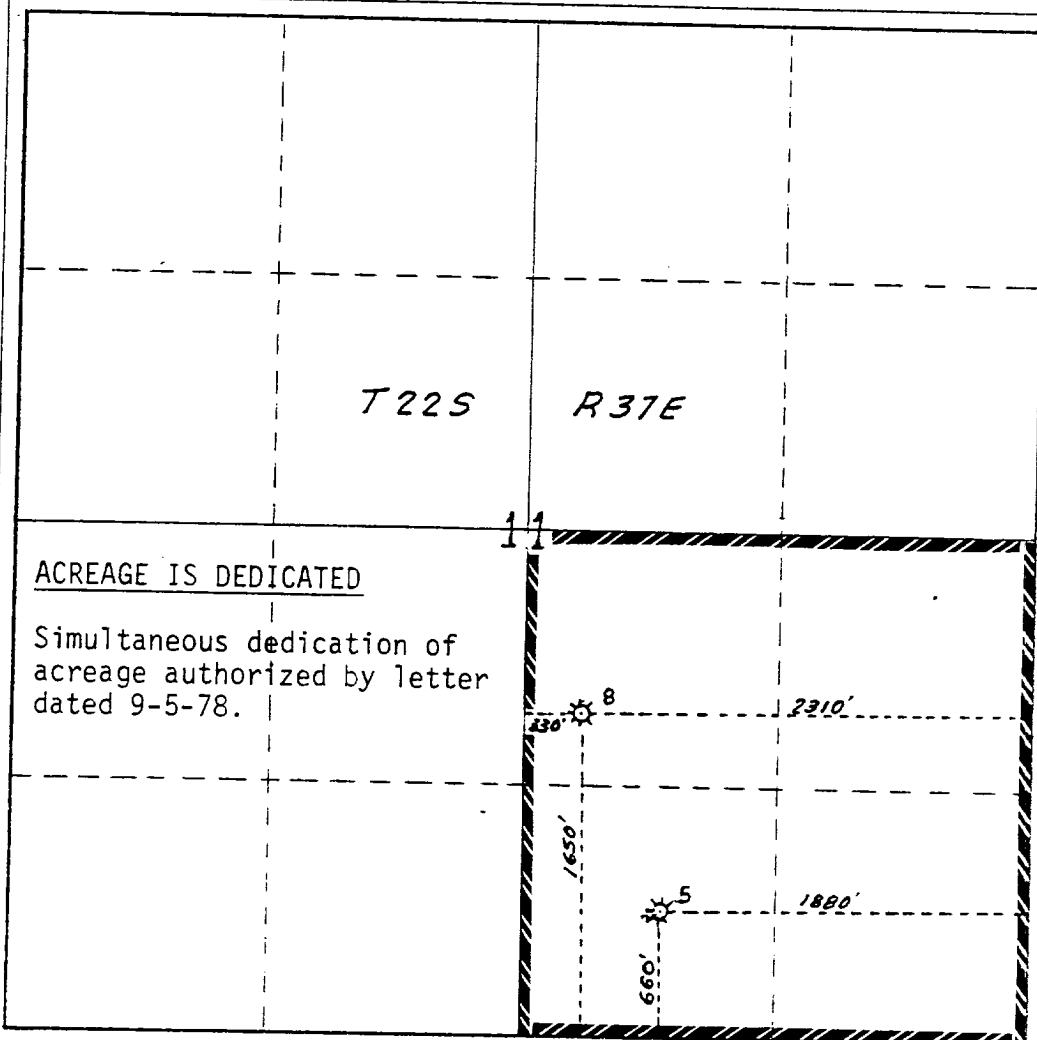
Operator Mobil Oil Corporation		Lease S.E. Long		Well No. 5	
Unit Letter 0	Section 11	Township 22S	Range 37E	County Lea	
Actual Portage Location of Well: 660 feet from the South line and 1880 feet from the East line					
Ground Level Elev. 3346	Producing Formation Tubb		Pool Tubb Gas	Dedicated Acreage: 2 Wells-160 Acres	

1. Outline the acreage dedicated to the subject well by colored pencil or hatchure marks on the plat below.
2. If more than one lease is dedicated to the well, outline each and identify the ownership thereof (both as to working interest and royalty).
3. If more than one lease of different ownership is dedicated to the well, have the interests of all owners been consolidated by communitization, unitization, force-pooling, etc?

☐ Yes ☐ No If answer is "yes," type of consolidation \_\_\_\_\_

If answer is "no," list the owners and tract descriptions which have actually been consolidated. (Use reverse side of this form if necessary.) \_\_\_\_\_

No allowable will be assigned to the well until all interests have been consolidated (by communitization, unitization, forced-pooling, or otherwise) or until a non-standard unit, eliminating such interests, has been approved by the Commission.



CERTIFICATION

I hereby certify that the information contained herein is true and complete to the best of my knowledge and belief.

*A.D. Bond*

Name  
A.D. Bond  
Position  
Reg. Engr. Coordinator  
Company  
Mobil Oil Corporation  
Date  
November 8, 1978

I hereby certify that the well location shown on this plat was plotted from field notes of actual surveys made by me or under my supervision, and that the same is true and correct to the best of my knowledge and belief.

Date Surveyed  
Registered Professional Engineer and/or Land Surveyor

Certificate No.

330 660 990 1320 1650 1980 2310 2640 2000 1500 1000 500

**NEW MEXICO OIL CONSERVATION COMMISSION  
WELL LOCATION AND ACREAGE DEDICATION PLAT**

Form C-102  
Supersedes C-128  
Effective 1-1-65

All distances must be from the outer boundaries of the Section.

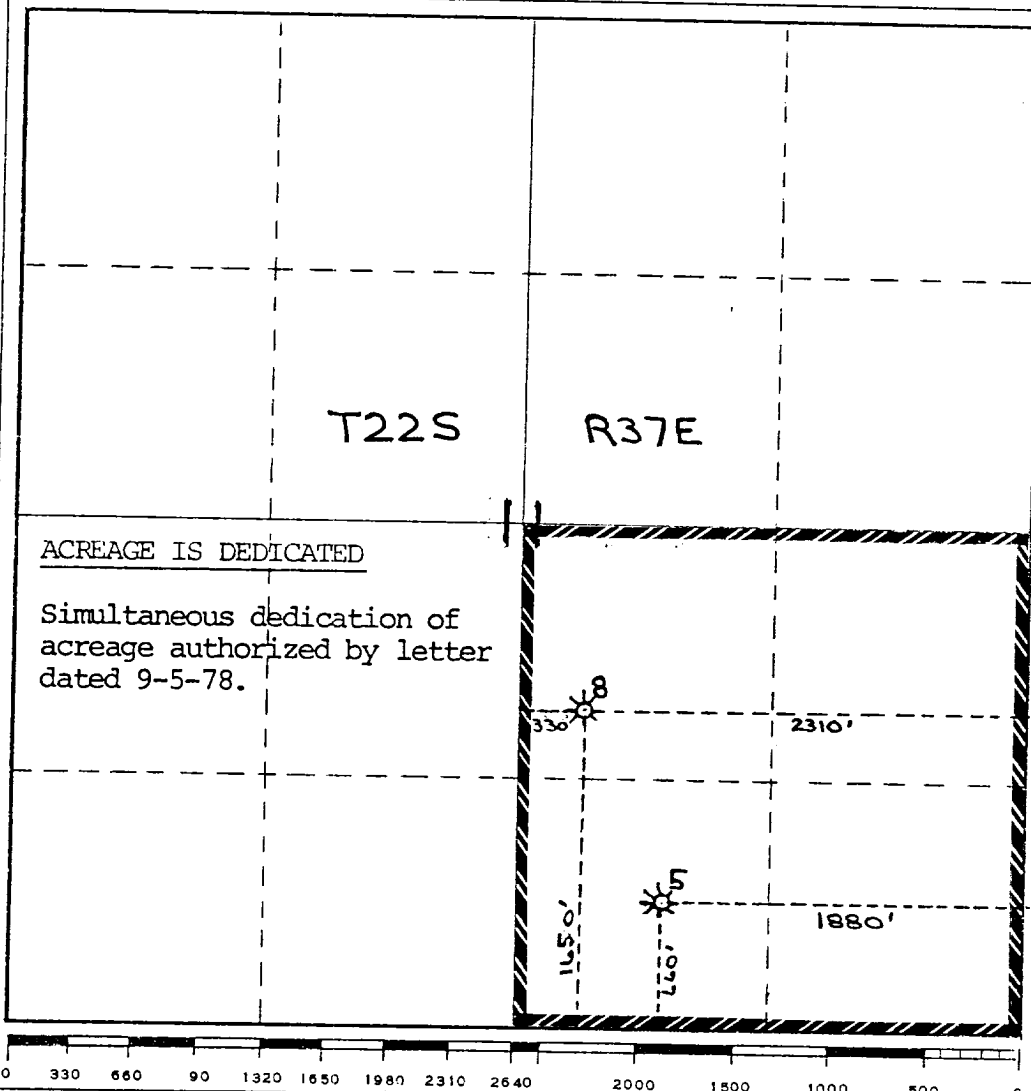
Operator <b>Mobil Oil Corporation</b>			Lease <b>S. E. Long</b>		Well No. <b>5</b>
Unit Letter <b>0</b>	Section <b>11</b>	Township <b>22S</b>	Range <b>37E</b>	County <b>Lea</b>	
Actual Footage Location of Well: <b>660</b> feet from the <b>South</b> line and <b>1880</b> feet from the <b>East</b> line					
Ground Level Elev. <b>3346</b>	Producing Formation <b>Blinebry</b>		Pool <b>Blinebry Gas</b>		Dedicated Acreage: <b>2 Wells-160</b> Acres

1. Outline the acreage dedicated to the subject well by colored pencil or hachure marks on the plat below.
2. If more than one lease is dedicated to the well, outline each and identify the ownership thereof (both as to working interest and royalty).
3. If more than one lease of different ownership is dedicated to the well, have the interests of all owners been consolidated by communitization, unitization, force-pooling, etc?

☐ Yes    ☐ No    If answer is "yes," type of consolidation \_\_\_\_\_

If answer is "no," list the owners and tract descriptions which have actually been consolidated. (Use reverse side of this form if necessary.) \_\_\_\_\_

No allowable will be assigned to the well until all interests have been consolidated (by communitization, unitization, forced-pooling, or otherwise) or until a non-standard unit, eliminating such interests, has been approved by the Commission.



ACREAGE IS DEDICATED

Simultaneous dedication of acreage authorized by letter dated 9-5-78.

**CERTIFICATION**

I hereby certify that the information contained herein is true and complete to the best of my knowledge and belief.

*A. D. Bond*

Name  
**A. D. Bond**

Position  
**Reg. Engr. Coordinator**

Company  
**Mobil Oil Corporation**

Date  
**September 12, 1978**

I hereby certify that the well location shown on this plat was plotted from field notes of actual surveys made by me or under my supervision, and that the same is true and correct to the best of my knowledge and belief.

Date Surveyed \_\_\_\_\_

Registered Professional Engineer and/or Land Surveyor \_\_\_\_\_

Certificate No. \_\_\_\_\_