

DISTRICT I  
P.O. Box 1980, Hobbs, NM 88240

DISTRICT II  
P.O. Drawer DD, Artesia, NM 88210

OIL CONSERVATION DIVISION  
P.O. Box 2088  
Santa Fe, New Mexico 87504-2088

This form is not to be used for  
reporting packer leakage tests in  
Northwest New Mexico

SOUTHEAST NEW MEXICO PACKER LEAKAGE TEST

Operator	MOBIL PRODUCING TX & N.M. INC.			Lease	S.E. LONG		Well No.	7		
Location of Well	Unit	I	Sec.	11	Twp	22S	Rge	37E	County	LEA
Name of Reservoir or Pool				Type of Prod.	Method of Prod.		Prod. Medium	Choke Size		
				(Oil or Gas)	Flow, Art Lift		(Tbg. or Csg)			
Upper Compl	DRINKARD			GAS		FLOW		TBG.	FULL	
Lower Compl	WANTZ - GRANITE WASH			OIL		FLOW		TBG.	FULL	

FLOW TEST NO. 1

Both zones shut-in at (hour, date): 8:15 A.M. 4-12-93

Well opened at (hour, date):	8:15 A.M.	4-13-93	Upper Completion	Lower Completion
Indicate by ( X ) the zone producing.....				X
Pressure at beginning of test.....			320	350
Stabilized? (Yes or No).....			Yes	Yes
Maximum pressure during test.....			320	350
Minimum pressure during test.....			320	25
Pressure at conclusion of test.....			320	25
Pressure change during test (Maximum minus Minimum).....			0	325
Was pressure change an increase or a decrease?.....			SAME	DECREASE
Well closed at (hour, date):	8:15 A.M.	4-14-93	Total Time On Production	24 hrs.
Oil Production			Gas Production	
During Test: -0- bbls; Grav. ---			During Test 0	MCF; GOR ---

Remarks

FLOW TEST NO. 2

Well opened at (hour, date):	8:15 A.M.	4-15-93	Upper Completion	Lower Completion
Indicate by ( X ) the zone producing.....			X	
Pressure at beginning of test.....			320	340
Stabilized? (Yes or No).....			Yes	Yes
Maximum pressure during test.....			320	340
Minimum pressure during test.....			20	340
Pressure at conclusion of test.....			20	340
Pressure change during test (Maximum minus Minimum).....			300	SAME (0)
Was pressure change an increase or a decrease?.....			DECREASE	SAME
Well closed at (hour, date)	LEFT OPEN	Total time on Production	24 HRS	
Oil production		Gas Production		
During Test: 0 bbls; Grav. --		During Test 50	MCF; GOR --	

Remarks

OPERATOR CERTIFICATE OF COMPLIANCE

I hereby certify that the information contained herein is true  
and completed to the best of my knowledge  
Mobil Exploration & Producing U.S. Inc.  
As Agent for Mobil Producing TX & N.M. Inc.

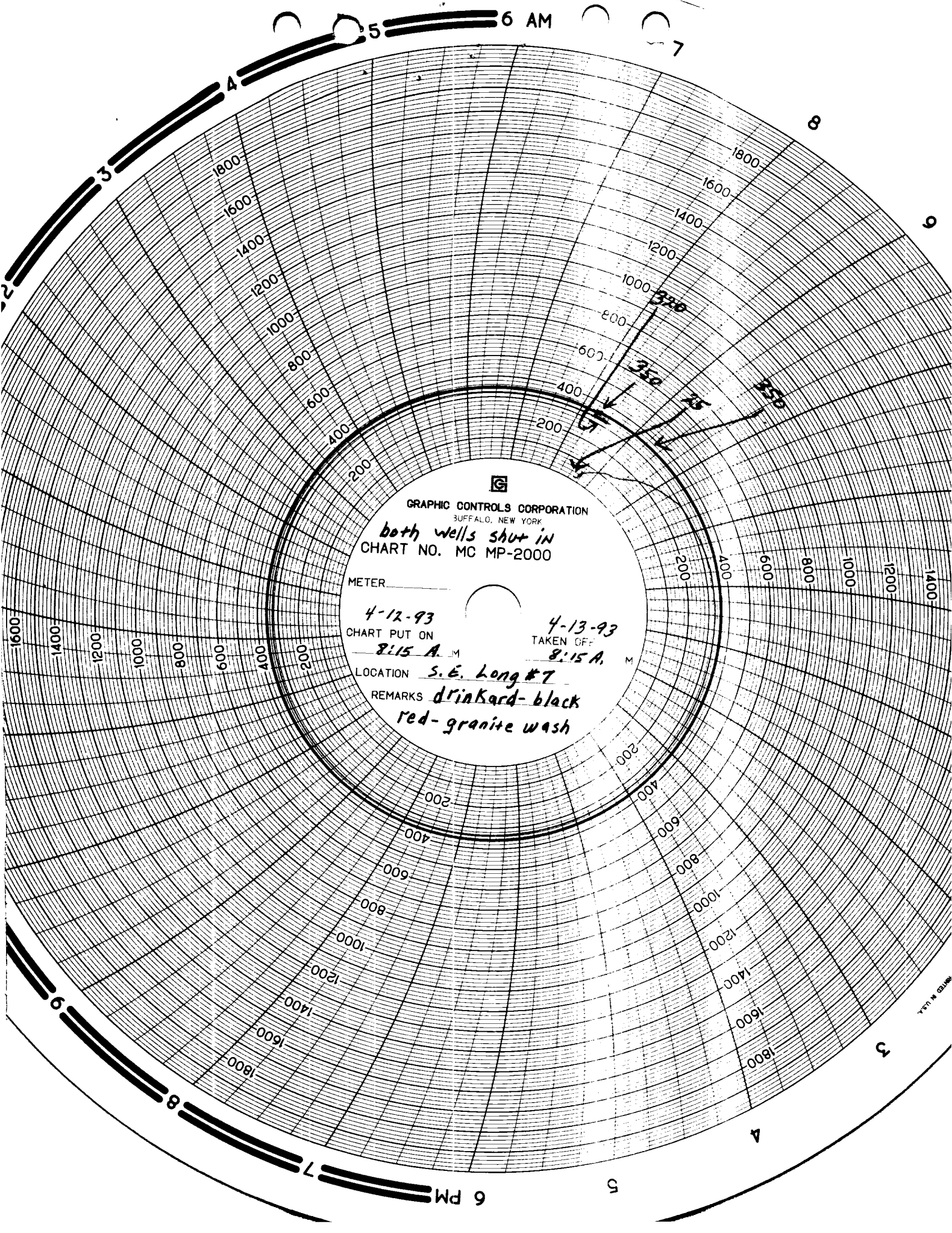
Operator  
Patricia B. Swanner  
Signature  
Patricia B. Swanner ENV. & REG. ASST. III  
Printed Name Title  
4/27/93 (713) 775-2081  
Date Telephone No.

OIL CONSERVATION DIVISION  
MAY 03 1993

Date Approved  
By ORLY J. GARCIA, JR.  
Title

## INSTRUCTIONS FOR SOUTHEAST NEW MEXICO PACKER LEAKAGE TEST

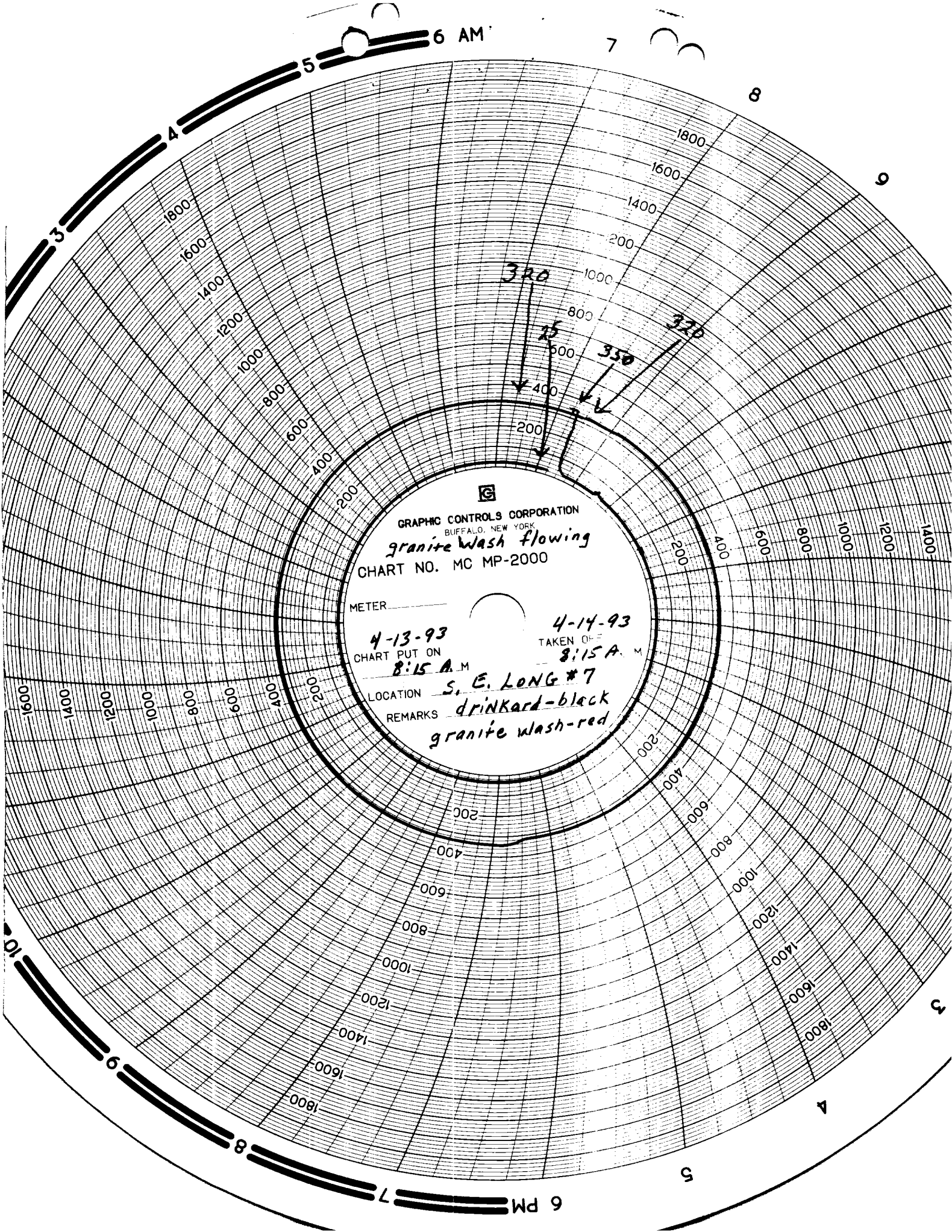
1. A packer leakage test shall be commenced on each multiply completed well within seven days after actual completion of the well, and annually thereafter as prescribed by the order authorizing the multiple completion. Such test shall also be commenced on all multiple completions within seven days following recompletion and/or chemical or fracture treatment, and whenever remedial work has been done on a well during which the packer or the tubing have been disturbed. Tests shall also be taken at any time that communication is suspected or when requested by the Division.
2. At least 72 hours prior to the commencement of any packer leakage test, the operator shall notify the Division in writing of the exact time the test is to be commenced. Offset operators shall also be so notified.
3. The packer leakage test shall commence when both zones of the dual completion are shut-in for pressure stabilization. Both zones shall remain shut-in until the well-head pressure in each has stabilized and for minimum of two hours thereafter, provided, however, that they need not remain shut-in more than 24 hours.
4. For Flow Test No. 1, one zone of the dual completion shall be produced at the normal rate of production while the other zone remains shut-in. Such test shall be continued until the flowing wellhead pressure has become stabilized and for minimum of two hours thereafter, provided however, that the flow test need not continue for more than 24 hours.
5. Following completion of Flow Test No. 1, the well shall again be shut-in, in accordance with Paragraph 3 above.
6. Flow Test No. 2 shall be conducted even though no leak was indicated during Flow Test No. 1. Procedure for Flow Test No. 2 is to be the same as for Flow Test No. 1 except that the previously produced zone shall remain shut-in while the previously shut-in zone is produced.
7. All pressures, throughout the entire test, shall be continuously measured and recorded with recording pressure gauges, the accuracy of which must be checked with deadweight tester at least twice, once at the beginning and once at the end, of each flow test.
8. The results of the above-described tests shall be filed in triplicate within 15 days after completion of the test. Tests shall be filed with the appropriate District Office of the New Mexico Oil Conservation Division on Southeast New Mexico Packer Leakage Test Form Revised 1-1-89, together with the original pressure recording gauge charts with all the deadweight pressures which were taken indicated thereon. In lieu of filing the aforesaid charts, the operator may construct a pressure versus time curve from each zone of each test, indicating thereon all pressure changes which may be reflected by the gauge charts as well as all deadweight pressure readings which were taken. If the pressure curve is submitted, the original chart must be permanently filed in the operator's office. Form C-116 shall also accompany the Packer Leakage Test Form when the test period coincides with a gas-oil ratio test period.



GRAPHIC CONTROLS CORPORATION  
BUFFALO, NEW YORK  
*both wells shut in*  
CHART NO. MC MP-2000

METER \_\_\_\_\_  
4-12-93  
CHART PUT ON  
8:15 A. M.  
LOCATION *S. E. Long #7*  
REMARKS *drinkard-black*  
*red-granite wash*  
4-13-93  
TAKEN OFF  
8:15 A. M.

RECEIVED  
APR 8 1993  
OCD MOBS ATTORNEY



GRAPHIC CONTROLS CORPORATION  
BUFFALO, NEW YORK

*granite wash flowing*  
CHART NO. MC MP-2000

METER \_\_\_\_\_

*4-13-93*

*4-14-93*

CHART PUT ON

TAKEN OFF

*8:15 A.M.*

*8:15 A.M.*

LOCATION

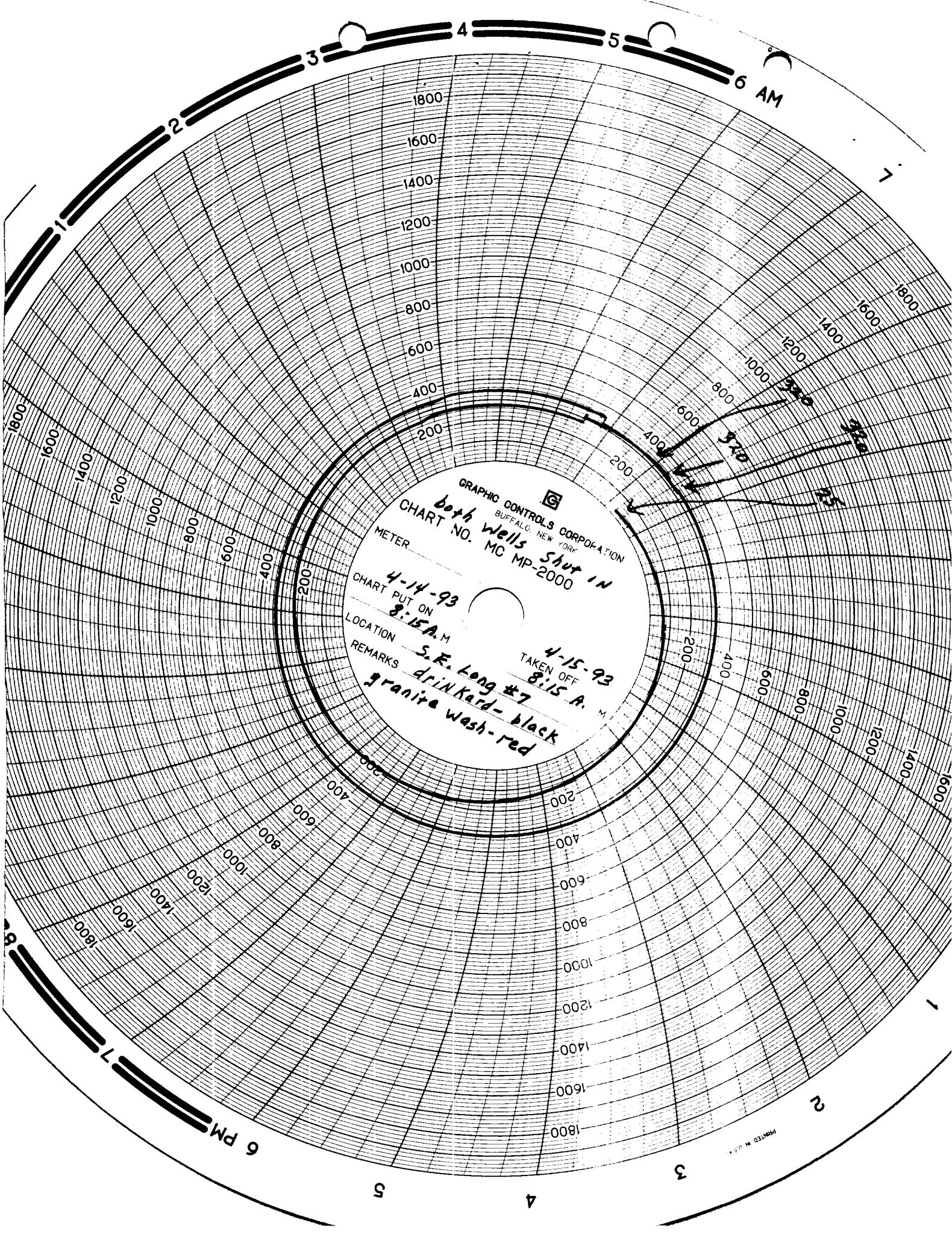
*S. E. LONG #7*

REMARKS

*drinkard-black*  
*granite wash-red*

RECEIVED  
APR 30 1993  
OCD HOBBS CTIVE





GRAPHIC CONTROLS CORPORATION  
BUFFALO, NEW YORK

CHART NO. MC MP-2000  
both wells shut in

METER

4-14-93

CHART PUT ON  
8:15 A.M.

LOCATION

S.E. Long #7

REMARKS

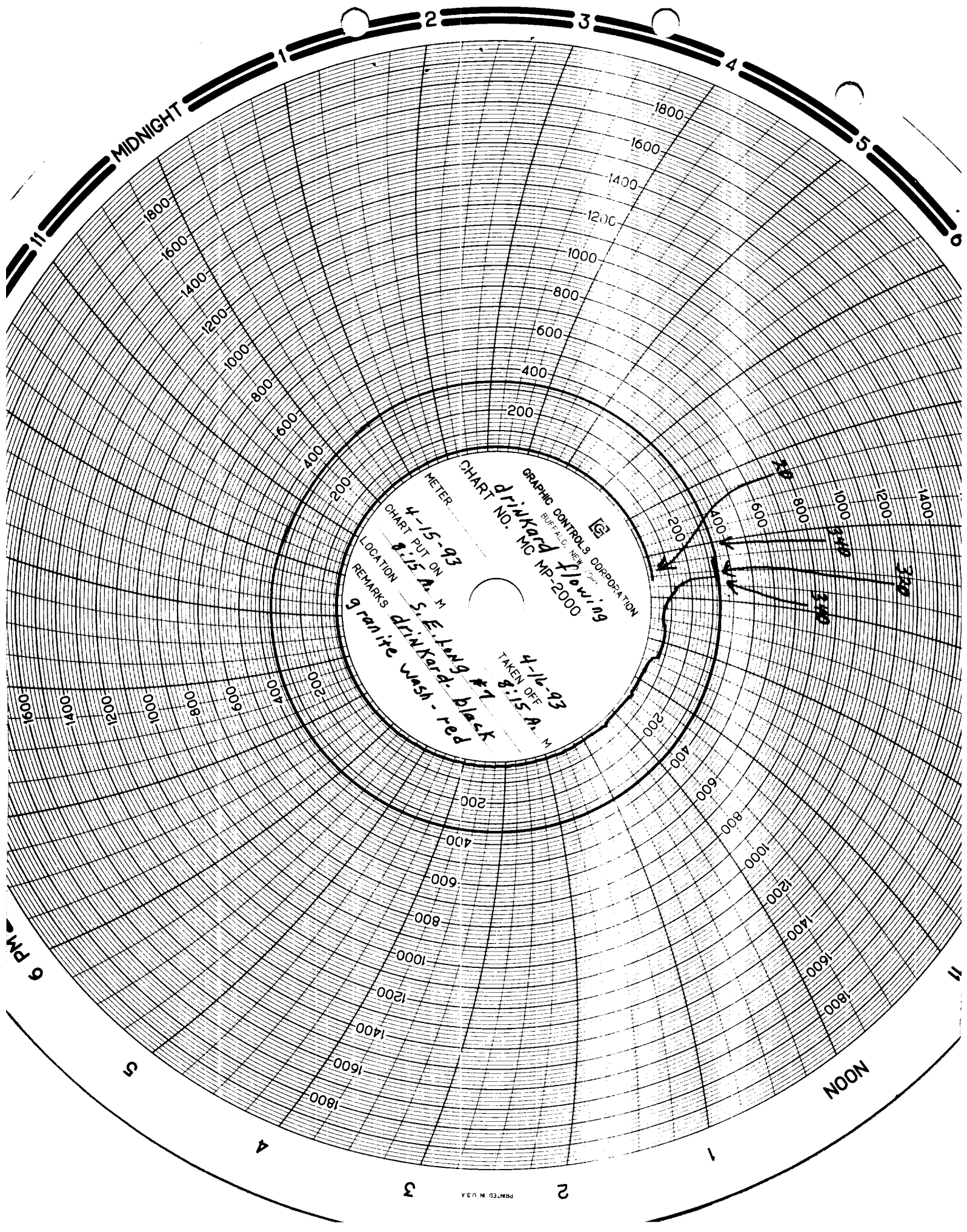
drin Kard- black  
granite wash-red

4-15-93  
TAKEN OFF  
8:15 A.M.

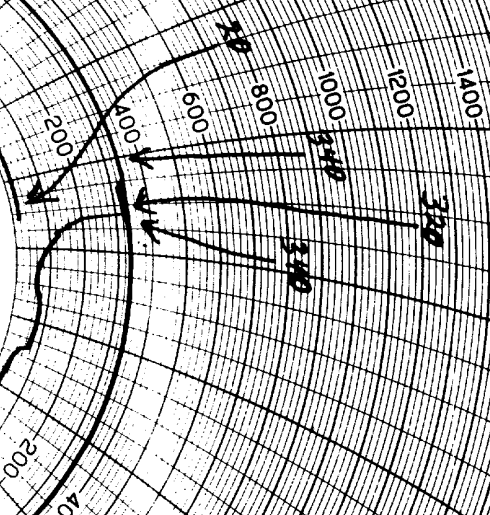
PRINTED IN U.S.A.

RECEIVED  
APR 30  
OCD





GRAPHIC CONTROL & CORPORATION  
BUFFALO, NEW YORK  
CHART NO. MC MP-2000  
METER  
CHART PUT ON 4-15-93  
LOCATION S.E. Lung #7  
REMARKS granite wash - red  
TAKEN OFF 4-16-93  
8:15 A.M.



RECEIVED  
APR 30 1993  
OCD HOBBS