

PADDOCK

LOU WORTHAN WELL NO. 5

660' FNL & 1980' FWL
SECTION 11, T-22-S, R-37-E
LEA COUNTY, NEW MEXICO

STATUS: SHUT-IN

TD: 5165' PBD: 5165'

GL: 3353' KB: 3365'

SURFACE: 13-3/8", 48#, H-40 SET @ 310'. CMT'D
W/300 SX. CIRC'D TO SURFACE.

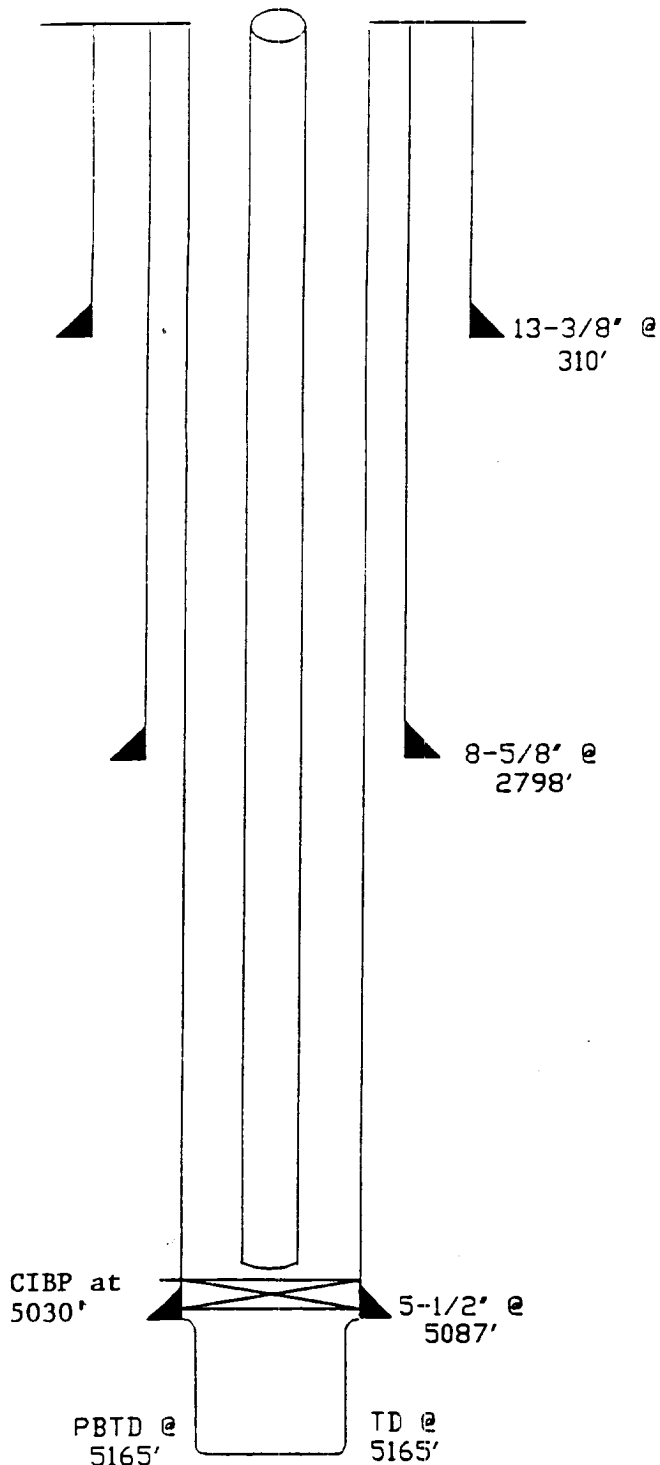
INTERMEDIATE: 8-5/8", 32#, H-40 & J-55 SET @
2798'. CMT'D W/3000 SX. TOC
UNKNOWN.

PRODUCTION: 5-1/2", 17#, J-55 SET @ 5087'.
CMT'D W/500 SX. TOC UNKNOWN.

TUBING: 2-3/8", 4.7#, H-40 SET @ 5163'.

PRESENT COMPLETION: PADDOCK

OPENHOLE F/5087'-5165'.



HISTORY: DRILLED IN JULY, 1946. COMPLETED OPENHOLE IN THE PADDOCK F/5087'-5165'.
ENTERED EXXON'S PADDOCK UNIT IN 1967. MARATHON REGAINED OPERATORSHIP
AND SHUT-IN WELL IN 1974.