

Submit 3 Copies
to Appropriate
District Office

State of New Mexico
Energy, Minerals and Natural Resources Department

Form C-103
Revised 1-1-89

OIL CONSERVATION DIVISION

DISTRICT I
P.O. Box 1980, Hobbs NM 88241-1980

DISTRICT II
P.O. Drawer DD, Artesia, NM 88210

DISTRICT III
1000 Rio Brazos Rd., Aztec, NM 87410

2040 Pacheco St.
Santa Fe, NM 87505

WELL API NO.

30-025-02428

5. Indicate Type of Lease

STATE ☐

FEE ☒

6. State Oil & Gas Lease No.

SUNDRY NOTICES AND REPORTS ON WELLS
(DO NOT USE THIS FORM FOR PROPOSALS TO DRILL OR TO DEEPEN OR PLUG BACK TO A
DIFFERENT RESERVOIR. USE "APPLICATION FOR PERMIT"
(FORM C-101) FOR SUCH PROPOSALS.)

1. Type of Well:

OIL
WELL ☐

GAS
WELL ☒

OTHER

2. Name of Operator

Marathon Oil Company

3. Address of Operator

P.O. Box 552 Midland, TX 79702

7. Lease Name or Unit Agreement Name

Lou Worthan

8. Well No.

12

9. Pool name or Wildcat

Blinebry

4. Well Location

Unit Letter **"H"** : **1980'** Feet From The **North** Line and **560'** Feet From The **East** Line

Section **11** Township **22-S** Range **37-E** NMPM **Lea** County

10. Elevation (Show whether DF, RKB, RT, GR, etc.)

G.L. 3341'

11.

Check Appropriate Box to Indicate Nature of Notice, Report, or Other Data

NOTICE OF INTENTION TO:

PERFORM REMEDIAL WORK ☐

PLUG AND ABANDON ☐

TEMPORARILY ABANDON ☐

CHANGE PLANS ☐

PULL OR ALTER CASING ☐

OTHER: ☒ **Stimulate**

SUBSEQUENT REPORT OF:

REMEDIAL WORK ☐

ALTERING CASING ☐

COMMENCE DRILLING OPNS. ☐

PLUG AND ABANDONMENT ☐

CASING TEST AND CEMENT JOB ☐

OTHER: ☐

12. Describe Proposed or Completed Operations (Clearly state all pertinent details, and give pertinent dates, including estimated date of starting any proposed work) SEE RULE 1103.

**Propose to stimulate existing Blinebry perfs @ 5388' to 5750' with 90,500 gals.
of 65 quality CO2 foam and 200,000 #s of 16/30 ottawa sand at 35 BPM. Put back on production after
completion.**

I hereby certify that the information above is true and complete to the best of my knowledge and belief.

SIGNATURE

Jerry Fletcher

TITLE **Engineer tech.**

DATE **7-7-00**

TYPE OR PRINT NAME

Jerry Fletcher

TELEPHONE NO. **915-687-8357**

(This space for State Use)

APPROVED BY

TITLE

DATE

CONDITIONS OF APPROVAL, IF ANY:

RECOMPLETION PROCEDURE

Lou Worthan No. 12
Drinkard Field
1980' FNL and 560' FEL
Sec 11, T-22-S, R-37-E
Lea County, NM

AFE NO.: 303500

Date: June 22, 2000

Purpose: Sand Fracture Stimulate Existing Perforations

Elevation: 3356' KB 3341 GL

Estimated Cost: \$130,000

Estimated Workover Duration: 6 days

Drillers TD: 6510'

PBTD: 6107' (CIBP)

Surface Casing: 13-3/8", 48#, H-40 casing at 298'. Cemented with 350 sks. Topped Off using 1" with 50 sks.

Intermediate Casing: 8-5/8", 32#, H-40 casing at 2807'. Cemented with 1500 sks. Circulated cement to surface.

Production Casing: 5-1/2", 17#, N-80 casing at 6510'. Cemented with 600 sks. Cement did not circulate. Estimated TOC @ 2500' ID: 4.892" Drift: 4.767". 80% Burst = 6192 psi.

Tubing: 2-3/8", 4.7#, J-55, EUE tubing to 5823', with a 5-1/2" TAC at 5291', a 2-3/8" ceramic joint at 5756', an API seating nipple at 5787' and a bull-plugged mud joint.

Rod String/Pump: 81 – 7/8" Norris 90 Grade D rods, 148 – 3/4" Norris 90 Grade D rods / 2" * 1-1/4" * 16' Insert pump with a 8' – 1" gas anchor.

Existing Perforations: Blinebry (4 JSPF): 5388-5422', 5448-94' (320 holes)
(2 JSPF): 5530-36', 5544-50', 5553-56', 5559-61', 5568-75', 5625-35',
5655-60', 5670-80', 5725-35', 5740-50' (138 holes)

Current Production: (6/08/2000) Pumping at the rate of 4 BOPD and 348 MCFPD.

Safety Consideration: Run sufficient amount of killstring during any extended shut-in period.

3-1/2", 9.3#, L-80 Workstring – (80% Burst – 8128 psi)
Sand Fracture Stimulation will be flowed back immediately after flush.

Procedure

1. Notify Hobbs Production personnel of impending workover.
2. Test safety anchors to 22,500#, if necessary.
3. MIRUPU. Kill well with 2% KCl water as necessary. Disconnect surface equipment and hang off pumping unit. Lay down polish rod. POOH with 7/8" and 3/4" rod strings and 1-1/4" Insert pump with gas anchor.
4. ND wellhead. NU 7-1/16" 5M Hydraulic BOPE with 2-3/8" pipe rams.
5. Release TAC and POOH with 2-3/8" production tubing and TAC. Visually inspect tubing and replace as necessary. PU 2-3/8" * 5-1/2" tension set RBP. RIH and set RBP at approximately 100'. POOH with tubing and setting tool. Pressure test blind rams to 2500 psi with 2% KCl water. RIH with BP retrieving tool. Latch onto RBP at +/- 100'. Pressure test pipe rams to 2500 psi with 2% KCl water. Release BP and POOH.
6. RIH with 5-1/2" packer on 2-3/8" production tubing. Set packer at +/- 5800'. Pressure test CIBP and 5-1/2" casing from +/- 5800 – 6107' to 1500 psi with 2% KCL water. Release packer and POOH. Reset packer at +/- 5300'. Load backside and test casing to 500 psi. Release packer and POOH.

7. Change out pipe rams to 3-1/2" and test. RU Hydrotesters. PU 3-1/2" , 9.3# L-80 workstring. RIH with 5-1/2" treating packer on 3-1/2" workstring to +/- 5300', hydrotesting to 8000 psi. RD Hydrotesters. Set packer at +/- 5300'. Load backside with 2% KCl water and test to 500 psi.

8. RU Stimulation Company, CO2 Company and Protechnics. Install pop-off valve on backside. Sand Fracture Stimulate existing Blinbry perforations 5388-5750' with 90,500 gals of 65 quality CO2 Foam and 200,000 #s of 16/30 Ottawa Sand at 35 BPM. Tag pad with 7 mc of Sc-46 and sand with 60 mc of Ir-192. Flush to bottom perforation with gelled 2% KCl water. Anticipated Treating Pressure = 7200 psi. Maximum Treating pressure: 8000 psi. RD Protechnics. Once the sand fracture stimulation has been flush from tubing, obtain an ISIP and immediately initiate flowback at +/- 2 BPM through Guardian choke manifold to flow back pit. RD Stimulation Company and CO2 Company. Flow back well to pit until well dies or until CO2 load is recovered.

9. RIH with sinker bar on sand line to ensure tubing is clear. RU Swab Equipment. Swab back spent acid load. RD swab equipment.

10. RU Slickline Company and lubricator. Test lubricator. RIH with sinker bar and tag PBTD at +/- 6107'. Run Protechnics After-Frac Gamma-Ray log from 5200-5900'. RD Slickline Company and lubricator.

11. Release packer and POOH, laying down packer and workstring. Change out pipe rams to 2-3/8" and test. RIH 5-1/2" TAC on 2-3/8" production tubing. Space out tubing with bottom of bull-plugged mud joint at +/- 5823', 2-3/8" perf sub at +/- 5788', an API seating nipple at +/- 5787' and the 5-1/2" TAC at +/- 5291'.

12. ND BOPE. Set TAC at +/- 5291'. NU wellhead.

13. RIH with 1-1/4" Insert pump and 3/4" and 7/8" rod string. Space out plunger and check pump action. Install polish rod and hang well on. Reconnect surface equipment and start well pumping to production. RDMOPU.

14. Monitor production and Producing Fluid levels.

xc:

D. A. Amst

R. J. Longmire

D. P. Nordt

T. P. Kacir

M. T. Wiskofske

Well File

MTW 6/30/2000



MARATHON OIL COMPANY
MID-CONTINENT REGION
MIDLAND OPERATIONS NORTHWEST NEW MEXICO

FIELD: Drinkard
LEASE: Lou Worthan
COUNTY: Lea

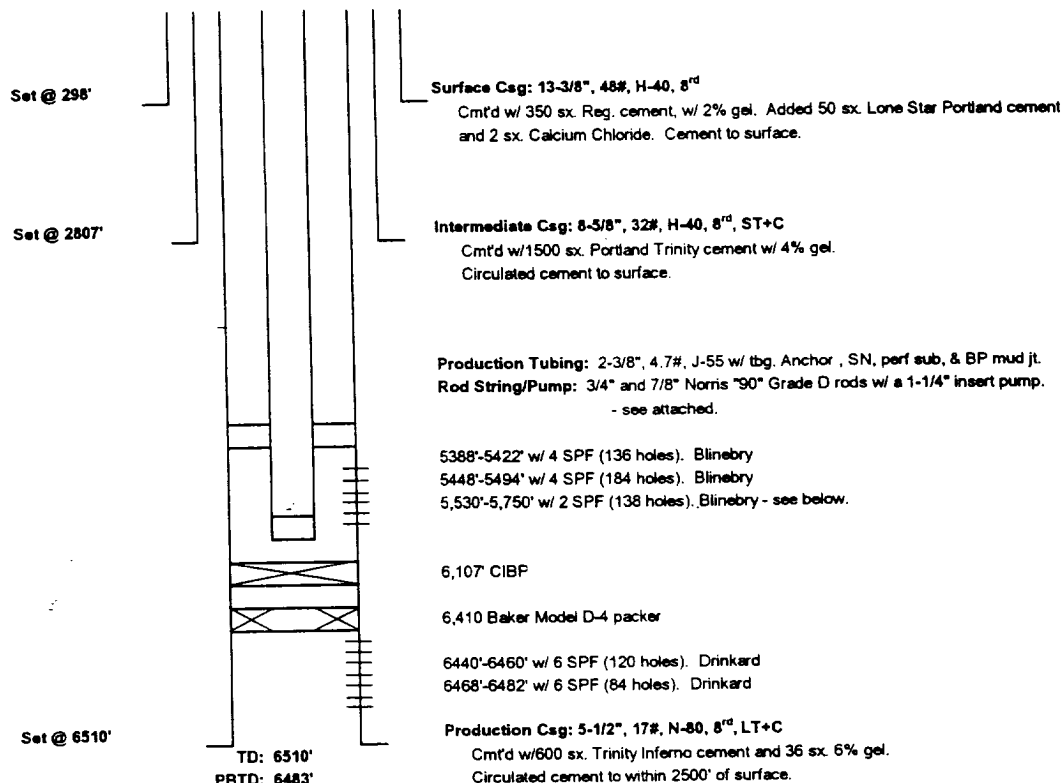
BY: J. Lazzari/M. Wiskofske
WELL: # 12
STATE: New Mexico

Current Date: 06/20/00
Spud Date: 01/16/52
Comp. Date: 03/17/52

LOCATION: 1980' FNL & 560' FWL, Sec. 11, T22S, R37E

GL: 3341'
KB: 3356'

TD: 6510'
PBD: 6107' - CIBP



History

- 2/9/52 Perforated Drinkard 6468'-6482' w/ 6 SPF. (84 holes)
- 3/1/52 Perforated Drinkard 6440'-6460', w/ 6 SPF. (120 holes)
- 3/3/52 Set a Baker #35, Model D-4 production packer at 6410' for dual completion. Ran 2 jts. of flush jt. tail pipe, bull plugged w/ 28 perforations 6' from bottom of jt. Landed at 6469.81' on a Baker locator sub w/ bottom and top seal nipples; a 2-3/8" EUE x 8.05' sub above; a 2-3/8" x 2.21 Otis Type "F" Mandrel Assembly and side door choke w/ 207 jts. of 2-3/8" J-55 tbq. Tbg. perfs 6460.81'-6463.81'.
- 3/5/52 Commenced acidizing. After 6 bbls. Formation broke from 2700# to 2600#, 2600# to 2500# after 23 bbls., 2500# to 2400# after 32 bbls. Formation treated w/ 88 bbls. and washed w/ 8 bbls.
- 3/7/52 Re-acidized formation with 6000 gals. of 15% HCL. Pump pressure 2200#, no breakdown point.
- 3/9/52 Perforated Blinebry 5388'-5422' and 5448'-5494', w/ 4 SPF. (320 holes)
- 3/11/52 Acidized Blinebry perforations w/ 3000 gals of 15% HCL. Formation broke down at 1450#. Ave. pump press. 1400#.
- 3/13/52 Fished out Otis Check valve and re-ran Otis blank mandrel; Drinkard producing through tubing, and Blinebry via annulus.
- 1/21/76 Ran and set Model "F" separating sleeve in mandrel to allow Blinebry to produce up tubing or casing.
- 3/9/94 Perforated tubing w/ 2-.5" holes at 5500' to increase gas rate.
- 3/31/94 Clean out casing w/ a xylene/compressed air treatment.
- 12/8/95 Recovered sinker bar and knives lost from March 94' cleanout. Set CIBP @ 6,107'. Perf'd Blinebry 5,530'-5,560', 5,544'-5,550', 5,553'-5,556', 5,559'-5,561', 5,568'-5,575', 5,625'-5,635', 5,655'-5,660', 5,670'-5,680', 5,725'-5,735', 5,740'-5,750' w/ 2 SPF (138 holes). Acid. w/ 4000 gals, dropping 250 Ball Sealers.
- 5/14/96 Placed well on pump.
- 1/8/99 Acidize well w/ 1000 gal. of 15% acid w/ N.E.F.E. down tbq. and flushed w/ 20 bbls. of 2% KCL water.



Tubing & Rod Report

Marathon Oil Company

Mid-Continent Region

Well Name: LOU WORTHAN NO. 12

Date Job: 1/7/1999

Co. Man: L.Stuard

KB: 13

# Joints	Size	Weight	Grade	Cplg	Length	Top	Bottom
172	2-3/8	4.7	J-55	8rd	5277.95	13.00	5290.95
1	5-1/2" x 2-3/8"	Tubing Anchor			2.70	5290.95	5293.65
15	2-3/8	4.7	J-55	8rd	462.81	5293.65	5756.46
1	2-3/8	Ceramic Joint	J-55	8rd	30.15	5756.46	5786.61
1	2-3/8 API	Seating Nipple			1.10	5786.61	5787.71
1	2-3/8	Perf Sub			4.00	5787.71	5791.71
1	2-3/8	Mud jt.	Bullplugged		31.70	5791.71	5823.41
189	Total # Joints						

Rod Report

1	1-1/4" x 22' Polish rod w/ 1-1/2" x 16' Liner						
1	7/8" x 2' grade D rod sub						
1	7/8" x 2' grade D rod sub						
1	7/8" x 4' grade D rod sub						
1	7/8" x 8' grade D rod sub						
72	7/8" x 25' Norris 90 grade D rods						
148	3/4" x 25' Norris 90 grade D rods						
8	7/8" x 25' Norris 90 grade D rods						
1	7/8" x 4' norris 90 grade D rod sub						
1	2" x 1-1/4" x 16' x 4' x 0 R.H.B.C. (No-Lock)						
1	1" x 8' gas anchor						
228	Total # Rods						

Pump Report

SIZE: 2" x 1-1/4" x R.H.B.C. 16' x 4' x 0 (reg plunger) Pump # 1mu-11 Max Stroke: 134"

Comments: BLINEBRY PERFS: 5388' - 5750' Pumping Unit Model: National Oilwell- Stroke @ 52"
 PBTD: 6107' (CIBP) S.P.M - 9
 5-1/2" 17.7# CASING @ 6510' Rod cplg. Mixed "T" & spray metal thru out string.

No. of Jts & Rods Returned : 1/7/99 2 jts. 2/3/8" tbg. On location used for swab flow line.