

AMERADA HESS CORPORATION

April 30, 1975

P. O. DRAWER "D"
MONUMENT, NEW MEXICO 88265

New Mexico Oil Conservation Commission
P. O. Box 2088
Santa Fe, New Mexico 87501

Re: Administrative Approval of
Non-Standard Location

Gentlemen:

Amerada Hess Corporation request approval of a non-standard location and request a 160 acre proration unit be assigned to the E. W. Walden Well No. 2, located in Unit K, 1911' FWL and 2009' FSL of Section 15, T-22-S, R-37-E, Lea County, New Mexico.

The well was originally completed in the Drinkard pool. Administrative Order No. MC-2186 dated April 14, 1975 authorized dual completion in the Blinebry oil and gas pool and the Drinkard pool.

Amerada Hess Corporation is the owner and operator at the E. W. Walden Lease described as the SW/4, Section 15, T-22-S, R-37-E, Lea County, New Mexico. This acreage is currently assigned to the E. W. Walden Well No. 7 located in Unit N, Section 15. This well is a marginal producer in the Blinebry pool and will be abandoned on approval of this application.

The following offset operators have been furnished a copy of this application:

Exxon Company - P. O. Box 1600 - Midland, Texas 79701
Gulf Oil Corporation - P. O. Box 460 - Hobbs, New Mexico 88240
Texas Pacific Oil Company - Box 4067 - Midland, Texas 79701
Marathon Oil Company - Box 2409 - Hobbs, New Mexico 88240

Form C-102 and a plat of all wells in the area is attached.

Yours very truly,



M. C. Black

Supervisor, Administrative Services

MCB:jm
Attachment

NEW MEXICO OIL CONSERVATION COMMISSION
WELL LOCATION AND ACREAGE DEDICATION PLAT

Form C-102
Supersedes C-128
Effective 1-1-65

All distances must be from the outer boundaries of the Section.

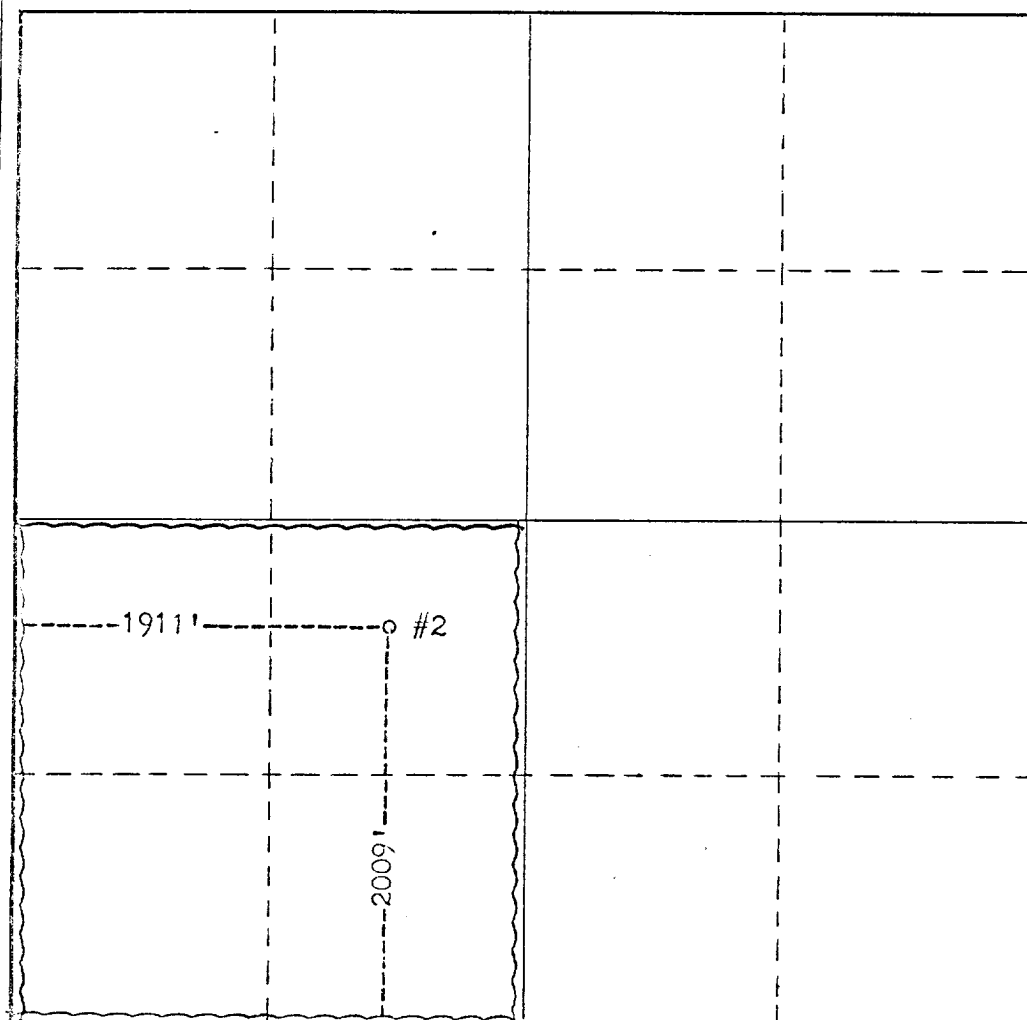
Operator Amerada Hess Corporation			Lease E.W. Walden		Well No. 2
Unit Letter K	Section 15	Township 22-S	Range 37-E	County Lea	
Actual Footage Location of Well: 2009 feet from the South line and 1911 feet from the West line					
Ground Level Elev. 3402'	Producing Formation Blinebry		Pool Blinebry Gas		Dedicated Acreage: 160 Acres

1. Outline the acreage dedicated to the subject well by colored pencil or hachure marks on the plat below.
2. If more than one lease is dedicated to the well, outline each and identify the ownership thereof (both as to working interest and royalty).
3. If more than one lease of different ownership is dedicated to the well, have the interests of all owners been consolidated by communitization, unitization, force-pooling, etc?

☐ Yes ☐ No If answer is "yes," type of consolidation _____

If answer is "no," list the owners and tract descriptions which have actually been consolidated. (Use reverse side of this form if necessary.) _____

No allowable will be assigned to the well until all interests have been consolidated (by communitization, unitization, forced-pooling, or otherwise) or until a non-standard unit, eliminating such interests, has been approved by the Commission.



CERTIFICATION

I hereby certify that the information contained herein is true and complete to the best of my knowledge and belief.

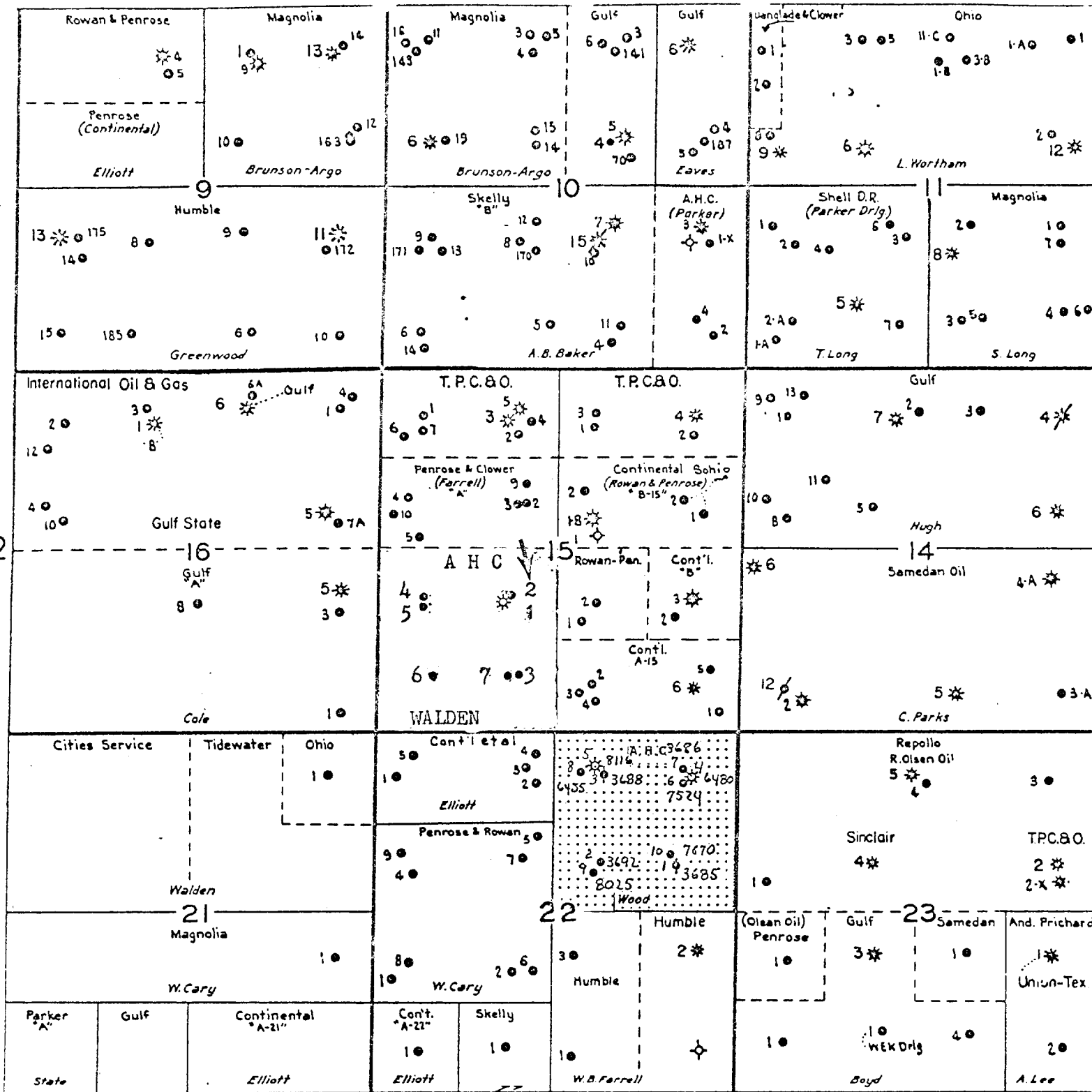
Name _____
 Position _____
Supver., Admin. Serv.
 Company _____
Amerada Hess Corporation
 Date _____
4-29-75

I hereby certify that the well location shown on this plat was plotted from field notes of actual surveys made by me or under my supervision, and that the same is true and correct to the best of my knowledge and belief.

Date Surveyed _____
 Registered Professional Engineer and/or Land Surveyor _____

Certificate No. _____

R-37-E



AMERADA HESS CORPORATION
DRAWER "D"
MONUMENT, NEW MEXICO

EUNICE FIELD
Lea Co., New Mexico

Scale: 1" = 2000'