

OIL CONSERVATION DIVISION
P. O. BOX 2088
SANTA FE, NEW MEXICO 87501

Form C-103
Revised 10-1-7

NO. OF COPIES RECEIVED	
DISTRIBUTION	
SANTA FE	
FILE	
U.S.G.S.	
LAND OFFICE	
OPERATOR	

5a. Indicate Type of Lease
State ☐ Fee ☒
5. State Oil & Gas Lease No.

SUNDRY NOTICES AND REPORTS ON WELLS
(DO NOT USE THIS FORM FOR PROPOSALS TO DRILL OR TO DEEPEN OR PLUG BACK TO A DIFFERENT RESERVOIR.
USE "APPLICATION FOR PERMIT - " (FORM C-101) FOR SUCH PROPOSALS.)

OIL WELL ☒ GAS WELL ☐ OTHER ☐

Name of Operator
Sohio Petroleum Company

Address of Operator
10 Desta Dr., Suite 600W Midland TX 79705

Location of Well
UNIT LETTER E 1830 FEET FROM THE North LINE AND 660 FEET FROM
West 15 LINE, SECTION 22S TOWNSHIP 37E RANGE 37E NMPM.

7. Unit Agreement Name

8. Farm or Lease Name
Walden "A"

9. Well No.
4

10. Field and Pool, or Wildcat
Hare Simpson

11. Elevation (Show whether DF, RT, GR, etc.)
3408' KB

12. County
Lea

Check Appropriate Box To Indicate Nature of Notice, Report or Other Data
NOTICE OF INTENTION TO: SUBSEQUENT REPORT OF:

PERFORM REMEDIAL WORK ☐
TEMPORARILY ABANDON ☐
PULL OR ALTER CASING ☐
OTHER ☐

PLUG AND ABANDON ☒
CHANGE PLANS ☐
OTHER ☐

REMEDIAL WORK ☐
COMMENCE DRILLING OPNS. ☐
CASING TEST AND CEMENT JOB ☐
OTHER ☐

ALTERING CASING ☐
PLUG AND ABANDONMENT ☐
OTHER ☐

13. Describe Proposed or Completed Operations (Clearly state all pertinent details, and give pertinent dates, including estimated date of starting any proposed work) SEE RULE 1103.

Proposed P & A Procedure (See Attached Diagram)

1. Spot 50 Sx cement plug on top of the anchor at 7288' MD. Tag Plug.
2. Spot 25 Sx plug at top of bad casing at + 4100' MD.
3. Cut 5 1/2" csg at +2700' MD. Pull casing.
4. Spot a 25 Sx plug across cut off point. This plug will also cover the shoe of the intermediate casing. Tag plug.
5. Spot a 100' plug at the top of the salt (1260' MD).
6. Spot a 100' plug across the surface shoe (169' MD).
7. Cut off well head and spot a 10 Sx surface plug.
8. Install plate and dry hole markers.

Note: Salt gel mud, containing 25# of gel per barrel of 10# brine, will be placed between all plugs.

The proposed start date for P & A is 8-31-87.

14. I hereby certify that the information above is true and complete to the best of my knowledge and belief.

SIGNED P. B. McAlvey

TITLE Dist. Production Engr.

DATE 8-7-87

Orig. Signed by
Paul Kautz
Geologist

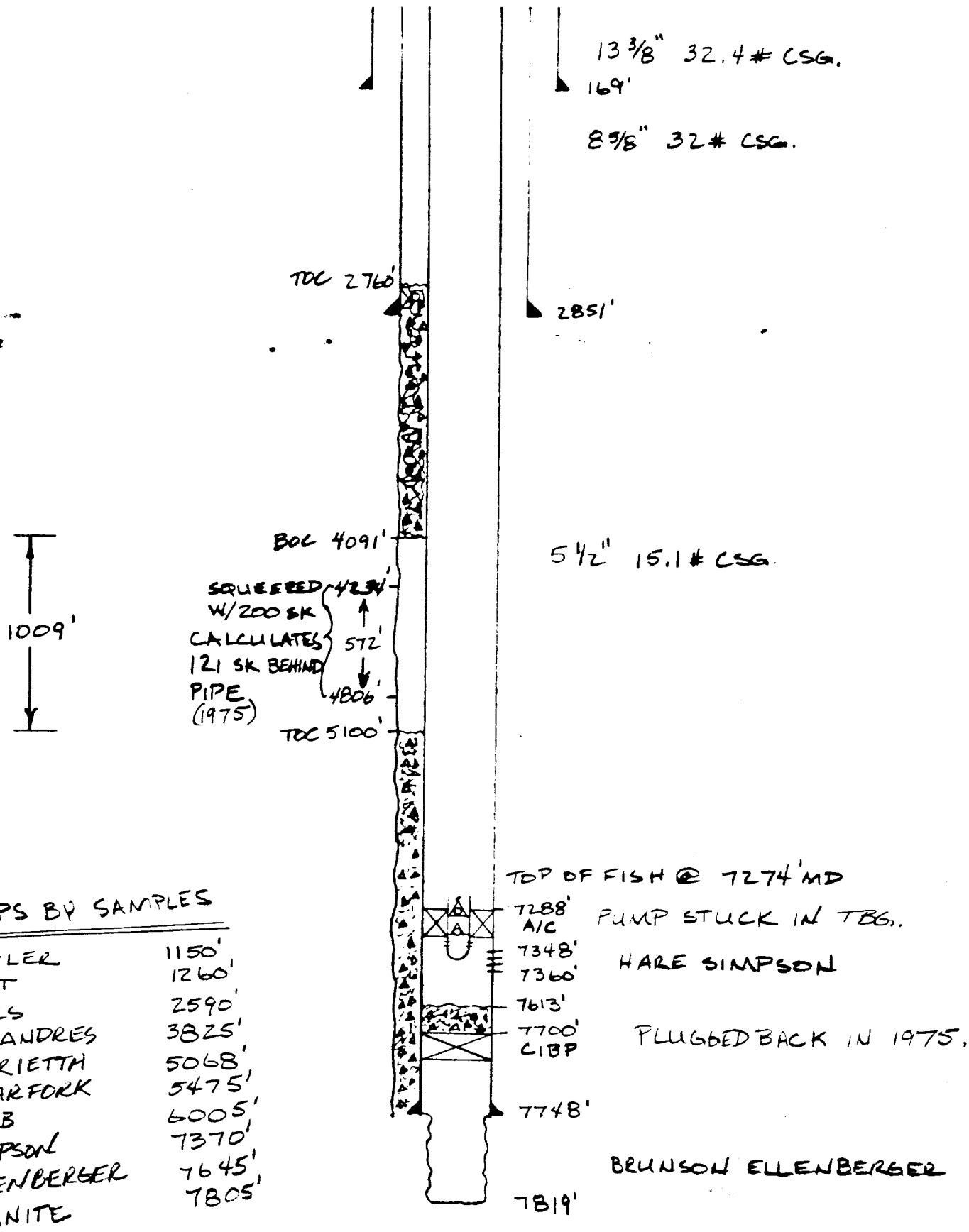
APPROVED BY _____

TITLE _____

DATE **AUG 18 1987**

CONDITIONS OF APPROVAL, IF ANY:

WALDEN "A" # 4
 SW/4, NW/4, SEC. 15
 T 22S, R 37E, LEA COUNTY, NM
 COMPLETED: 2-28-48



TOPS BY SAMPLES

RUSTLER	1150'
SALT	1260'
YATES	2590'
SAN ANDRES	3825'
GLORIETTA	5068'
CLEARFORK	5475'
TUBB	6005'
SIMPSON	7370'
ELLENBERGER	7645'
GRANITE	7805'

RECEIVED
AUG 17 1987
OCD
HOBBS OFFICE