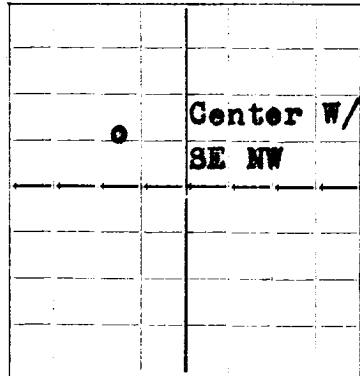
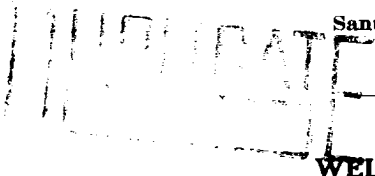


N.

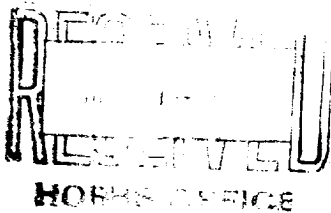
NEW MEXICO OIL CONSERVATION COMMISSION



AREA 640 ACRES  
LOCATE WELL CORRECTLY



Santa Fe, New Mexico



Mail to Oil Conservation Commission, Santa Fe, New Mexico, or its proper agent not more than twenty days after completion of well. Follow instructions in the Rules and Regulations of the Commission. Indicate questionable data by following it with (?). SUBMIT IN TRIPLICATE.

Gulf Oil Corporation

Tulsa, Oklahoma

Company or Operator  
**Annie L. Christmas C** Well No. **2** in **W/2 SE NW** of Sec. **18**, T. **22S**  
Lease **37E** Field, **Penrose** County, **Lea**  
N. M. P. M. **1980** feet south of the North line and **990** feet west of the East line of **NW/4**  
If State land the oil and gas lease is No. \_\_\_\_\_ Assignment No. \_\_\_\_\_  
If patented land the owner is \_\_\_\_\_ Address \_\_\_\_\_  
If Government land the permittee is \_\_\_\_\_ Address \_\_\_\_\_  
The Lessee is **Gulf Oil Corporation** Address **Tulsa, Oklahoma**  
Drilling commenced **1-22-40** 19\_\_\_\_ Drilling was completed **2-15-40** 19\_\_\_\_  
Name of drilling contractor **Gulf Oil Corporation** Address **Tulsa, Oklahoma**  
Elevation above sea level at top of casing **3429'** feet.  
The information given is to be kept confidential until **?** 19\_\_\_\_

OIL SANDS OR ZONES

No. 1, from **3600'** to **3730'** No. 4, from \_\_\_\_\_ to \_\_\_\_\_  
No. 2, from \_\_\_\_\_ to **Pay 3635'** No. 5, from \_\_\_\_\_ to \_\_\_\_\_  
No. 3, from \_\_\_\_\_ to \_\_\_\_\_ No. 6, from \_\_\_\_\_ to \_\_\_\_\_

IMPORTANT WATER SANDS

Include data on rate of water inflow and elevation to which water rose in hole.  
No. 1, from **Rotary hole** to \_\_\_\_\_ feet.  
No. 2, from \_\_\_\_\_ to \_\_\_\_\_ feet.  
No. 3, from \_\_\_\_\_ to \_\_\_\_\_ feet.  
No. 4, from \_\_\_\_\_ to \_\_\_\_\_ feet.

CASING RECORD

SIZE	WEIGHT PER FOOT	THREADS PER INCH	MAKE	AMOUNT	KIND OF SHOE	CUT & FILLED FROM	PERFORATED FROM TO	PURPOSE
9-5/8"	25.7#	3-Gauge	Armco	290'				
5-1/2"	14#	10	*	3627'				
* Bottom 3 joints (79'7") Republic electric weld; top 114 joints (3537'6") J&L Grade H Seamless Steel.								

MUDDING AND CEMENTING RECORD

SIZE OF HOLE	SIZE OF CASING	WHERE SET	NO. SACKS OF CEMENT	METHOD USED	MUD GRAVITY	AMOUNT OF MUD USED
13-3/4"	9-5/8	290'	200	Halliburton	Used 200# of calcium ohloride	
6-3/4"	5-1/2	3627'	200	Halliburton		

PLUGS AND ADAPTERS

Heaving plug—Material \_\_\_\_\_ Length \_\_\_\_\_ Depth Set \_\_\_\_\_  
Adapters—Material \_\_\_\_\_ Size \_\_\_\_\_

RECORD OF SHOOTING OR CHEMICAL TREATMENT

SIZE	SHELL USED	EXPLOSIVE OR CHEMICAL USED	QUANTITY	DATE	DEPTH SHOT OR TREATED	DEPTH CLEANED OUT
		NONE USED				

Results of shooting or chemical treatment \_\_\_\_\_  
\_\_\_\_\_

RECORD OF DRILL-STEM AND SPECIAL TESTS

If drill-stem or other special tests or deviation surveys were made, submit report on separate sheet and attach hereto.

TOOLS USED

Rotary tools were used from **0'** feet to **3730** feet, and from \_\_\_\_\_ feet to \_\_\_\_\_ feet  
Cable tools were used from \_\_\_\_\_ feet to \_\_\_\_\_ feet, and from \_\_\_\_\_ feet to \_\_\_\_\_ feet

PRODUCTION

Put to producing **March 1,** 19**40**  
The production of the first 24 hours was **1632** barrels of fluid of which \_\_\_\_\_ % was oil; \_\_\_\_\_ % emulsion; \_\_\_\_\_ % water; and \_\_\_\_\_ % sediment. Gravity, Be **Corrected gravity 37.2.**  
If gas well, cu. ft. per 24 hours **5,500,000** Gallons gasoline per 1,000 cu. ft. of gas \_\_\_\_\_  
Rock pressure, lbs. per sq. in. **Casing pressure 1300#.**

EMPLOYEES

\_\_\_\_\_, Driller \_\_\_\_\_, Driller  
\_\_\_\_\_, Driller \_\_\_\_\_, Driller

FORMATION RECORD ON OTHER SIDE

I hereby swear or affirm that the information given herewith is a complete and correct record of the well and all work done on it so far as can be determined from available records.

Subscribed and sworn to before me this **6** day of **March**, 19**40**  
\_\_\_\_\_  
Notary Public  
My Commission expires **March 6, 1940**  
Tulsa, Oklahoma March 6, 1940  
Name **D. D. Anderson**  
Position **General Superintendent**  
Representing **Gulf Oil Corporation**  
Company or Operator  
Address **Tulsa, Oklahoma**

# FORMATION RECORD

FROM	TO	THICKNESS IN FEET	FORMATION
0'	210'		Sand
	298		Sand & red shale
	338		Red shale
	600		Red bed, blue shale & shells
	730		Red & blue shale
	1065		Red shale
	1092		Anhydrite
	1194		Anhydrite
	1260		Anhydrite & salt
	1385		Anhydrite
	1630		Salt & anhydrite
	1750		Salt
	2155		Salt & anhydrite
	2254		Salt
	2437		Anhydrite & salt
	2492		Anhydrite
	2513		Anhydrite & gyp
	2729		Anhydrite
	2830		Anhydrite & lime
	2853		Anhydrite
	3292		Anhydrite & lime
	3322		Anhydrite & lime
	3349		Lime
	3398		Anhydrite & lime
	3620		Lime
	3635		Soft lime
	3700		Lime
	3730		Soft lime
			TOTAL DEPTH

## GEOLOGICAL TOPS

Anhydrite	1060'
Salt Base	2420
Yates	2620
Knight	3310
Penrose	3420
Eunice Dolomite	3600
Pay	3635
Total depth	3730