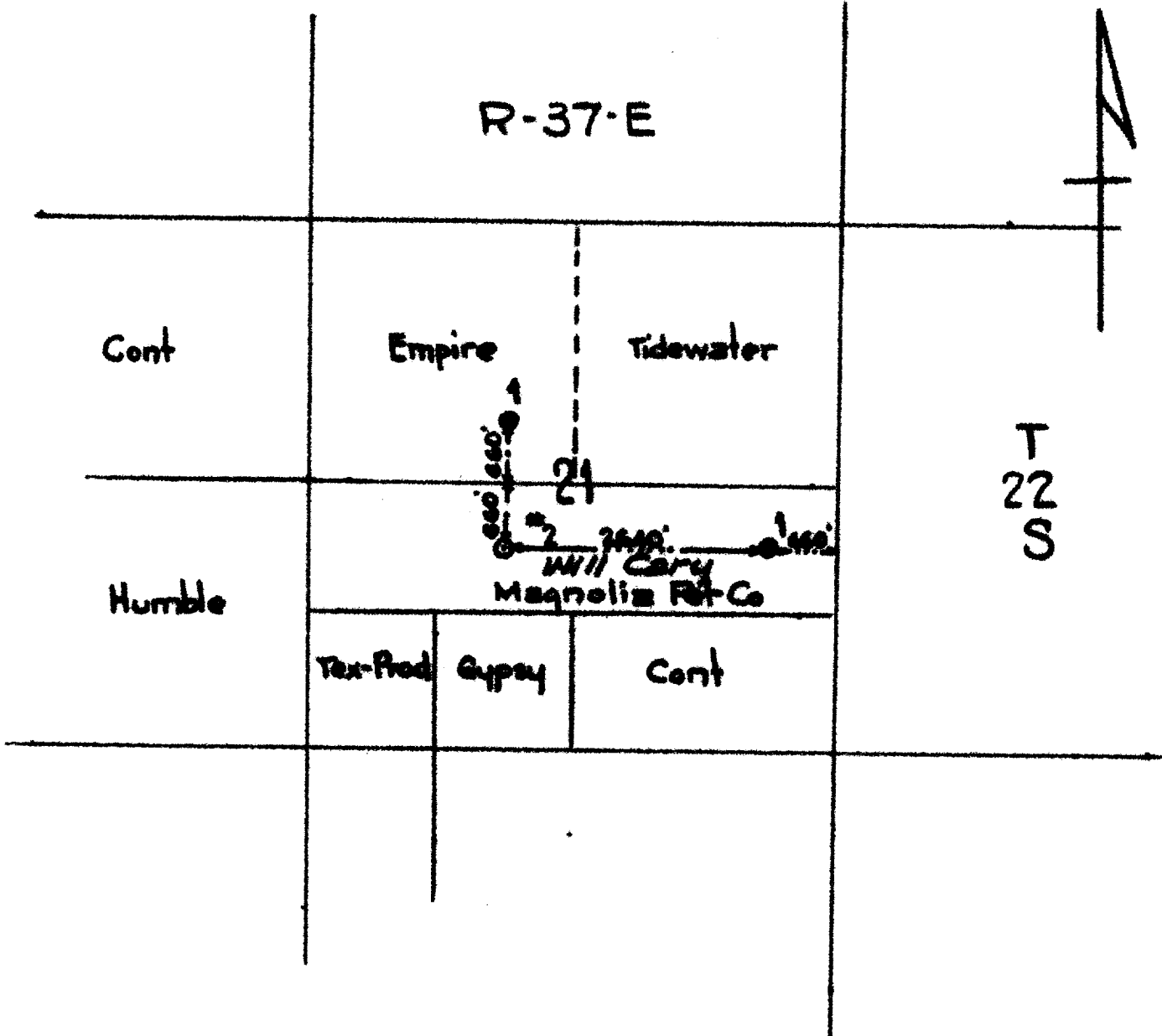


Magnolia Petroleum Company  
PRODUCING DEPARTMENT

Location made January, 1937  
Will Cary Well No. 2  
Lee District  
Lease NM-632, acres 160, N 1/2 of S 1/2 21-22S-37E { District  
Lee County, New Mexico Township  
Scale 1" = 1600' N S E W



Reserve 200'  
Special instructions  
Location changed on account of  
Date work is commenced \_\_\_\_\_, 193\_\_\_\_ Supt.  
Location approved by \_\_\_\_\_ Plat made by F.R. Grooms

**Magnolia Petroleum Company**  
**PRODUCING DEPARTMENT**

Location for Well No. \_\_\_\_\_

File No. \_\_\_\_\_