

NEW MEXICO OIL CONSERVATION COMMISSION  
SOUTHEAST NEW MEXICO PACKER LEAKAGE TEST

|                                  |                           |           |                           |                               |                           |               |  |
|----------------------------------|---------------------------|-----------|---------------------------|-------------------------------|---------------------------|---------------|--|
| Operator<br>Marathon Oil Company |                           |           | Lease<br>J. L. Muncy      |                               |                           | Well<br>No. 2 |  |
| Location of Well                 | Unit<br>K                 | Sec<br>24 | Twp<br>22S                | Rge<br>37E                    | County<br>Lea             |               |  |
|                                  | Name of Reservoir or Pool |           | Type of Prod (Oil or Gas) | Method of Prod Flow, Art Lift | Prod. Medium (Tbg or Csg) | Choke Size    |  |
| Upper Compl                      | Blinebry                  |           | Gas                       | Flow                          | Csg.                      | --            |  |
| Lower Compl                      | Tubb                      |           | Gas                       | Flow                          | Tbg.                      | --            |  |

FLOW TEST NO. 1

Both zones shut-in at (hour, date): 9:00 a.m. 4/11/83

| Well opened at (hour, date):                             | Upper Completion                  | Lower Completion |
|--|-----------------------------------|------------------|
| 9:00 a.m. 4/12/83  |                                   |                  |
| Indicate by ( X ) the zone producing.....                |                                   | X                |
| Pressure at beginning of test.....                       | 375                               | 210              |
| Stabilized? (Yes or No).....                             | Yes                               | Yes              |
| Maximum pressure during test.....                        | 375                               | 210              |
| Minimum pressure during test.....                        | 375                               | 90               |
| Pressure at conclusion of test.....                      | 375                               | 90               |
| Pressure change during test (Maximum minus Minimum)..... | --                                | 120              |
| Was pressure change an increase or a decrease?.....      | --                                | Decrease         |
| Well closed at (hour, date): 9:00 a.m. 4/13/83           | Total Time On Production 24 Hours |                  |
| Oil Production   | Gas Production                    |                  |
| During Test: 2 bbls; Grav. 42                            | During Test 44 MCF; GOR 22,000    |                  |
| Remarks All pressures are dead weight gauge.             |                                   |                  |

FLOW TEST NO. 2

|  |                                   |                  |
|--|-----------------------------------|------------------|
| Well opened at (hour, date): 9:00 a.m. 4/14/83           | Upper Completion                  | Lower Completion |
| Indicate by ( X ) the zone producing.....                | X                                 |                  |
| Pressure at beginning of test.....                       | 375                               | 220              |
| Stabilized? (Yes or No).....                             | Yes                               | No               |
| Maximum pressure during test.....                        | 375                               | 330              |
| Minimum pressure during test.....                        | 310                               | 220              |
| Pressure at conclusion of test.....                      | 310                               | 330              |
| Pressure change during test (Maximum minus Minimum)..... | 65                                | 110              |
| Was pressure change an increase or a decrease?.....      | Decrease                          | Decrease         |
| Well closed at (hour, date) 9:00 a.m. 4/15/83            | Total time on Production 24 Hours |                  |
| Oil Production   | Gas Production                    |                  |
| During Test: 0 bbls; Grav. -                             | During Test 5 MCF; GOR -          |                  |
| Remarks All pressures are dead weight gauge.             |                                   |                  |

I hereby certify that the information herein contained is true and complete to the best of my knowledge.

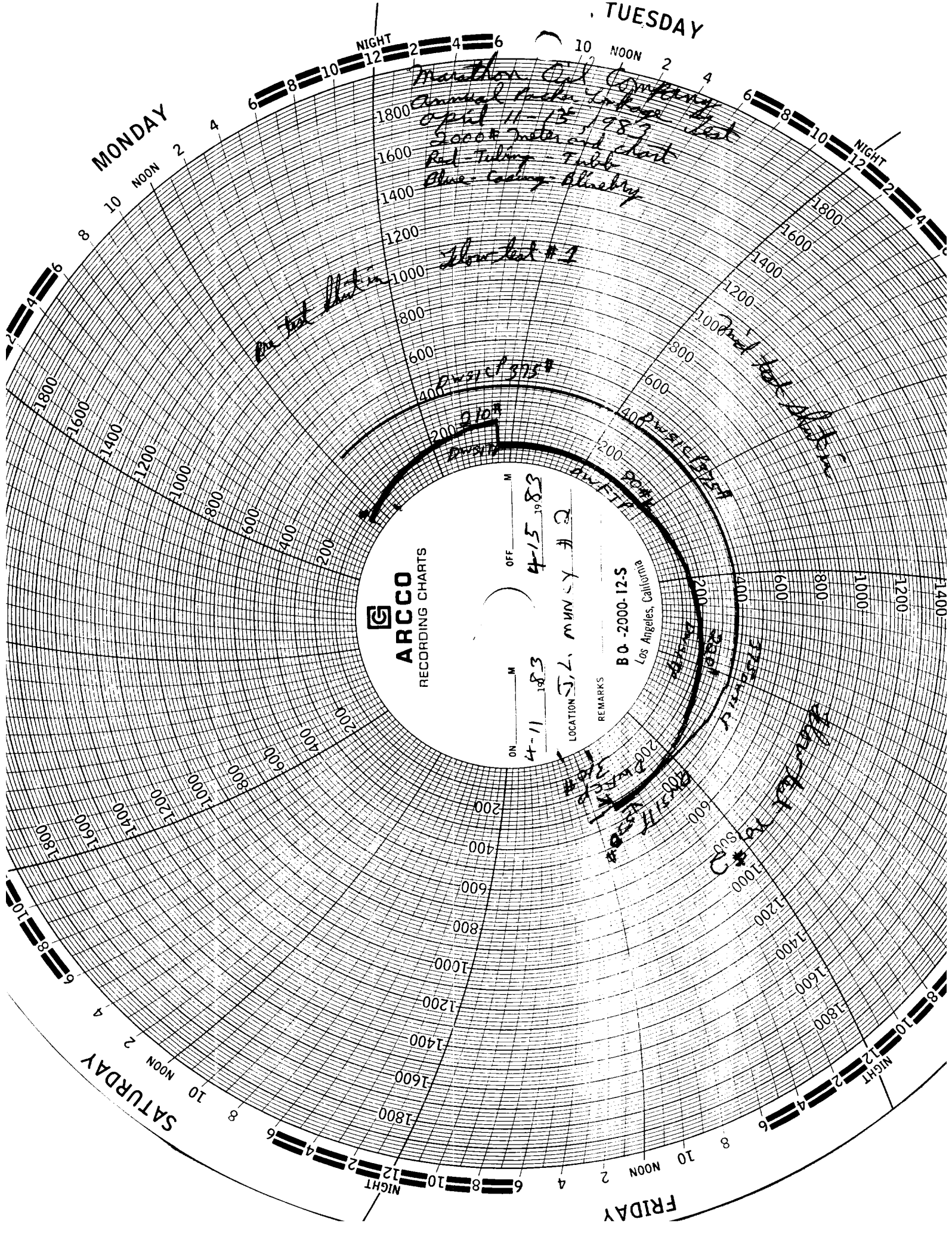
Witnessed MAY 3 1983 19  
New Mexico Oil Conservation Commission

ORIGINAL SIGNED BY JERRY SEXTON  
DISTRICT I SUPERVISOR

Operator Marathon Oil Company  
By Frank J. Ledillo

Title Engineering Technician

Le



Marathon Oil Company  
Annual Production Report  
April 11-13, 1983  
2000 Meter and Chart  
Red - Tubing - Tubing  
Blue - Casing - Blueberry

Flow test #1

Flow test #2

Flow test #3

ARCCO  
RECORDING CHARTS

ON OFF  
4-11 83  
4-15 83

LOCATION S.W. MOUNTAIN #2

REMARKS  
B.O. - 2000.125  
Los Angeles, California

Flow test #4  
Flow test #5  
Flow test #6  
Flow test #7  
Flow test #8  
Flow test #9  
Flow test #10  
Flow test #11  
Flow test #12  
Flow test #13  
Flow test #14  
Flow test #15  
Flow test #16  
Flow test #17  
Flow test #18  
Flow test #19  
Flow test #20  
Flow test #21  
Flow test #22  
Flow test #23  
Flow test #24  
Flow test #25  
Flow test #26  
Flow test #27  
Flow test #28  
Flow test #29  
Flow test #30  
Flow test #31  
Flow test #32  
Flow test #33  
Flow test #34  
Flow test #35  
Flow test #36  
Flow test #37  
Flow test #38  
Flow test #39  
Flow test #40  
Flow test #41  
Flow test #42  
Flow test #43  
Flow test #44  
Flow test #45  
Flow test #46  
Flow test #47  
Flow test #48  
Flow test #49  
Flow test #50  
Flow test #51  
Flow test #52  
Flow test #53  
Flow test #54  
Flow test #55  
Flow test #56  
Flow test #57  
Flow test #58  
Flow test #59  
Flow test #60  
Flow test #61  
Flow test #62  
Flow test #63  
Flow test #64  
Flow test #65  
Flow test #66  
Flow test #67  
Flow test #68  
Flow test #69  
Flow test #70  
Flow test #71  
Flow test #72  
Flow test #73  
Flow test #74  
Flow test #75  
Flow test #76  
Flow test #77  
Flow test #78  
Flow test #79  
Flow test #80  
Flow test #81  
Flow test #82  
Flow test #83  
Flow test #84  
Flow test #85  
Flow test #86  
Flow test #87  
Flow test #88  
Flow test #89  
Flow test #90  
Flow test #91  
Flow test #92  
Flow test #93  
Flow test #94  
Flow test #95  
Flow test #96  
Flow test #97  
Flow test #98  
Flow test #99  
Flow test #100

100

100

100

100

