

**NEW MEXICO OIL CONSERVATION COMMISSION**  
**WELL LOCATION AND ACREAGE DEDICATION PLAT**

Form C  
Supers  
Effects

All distances must be from the outer boundaries of the Section.

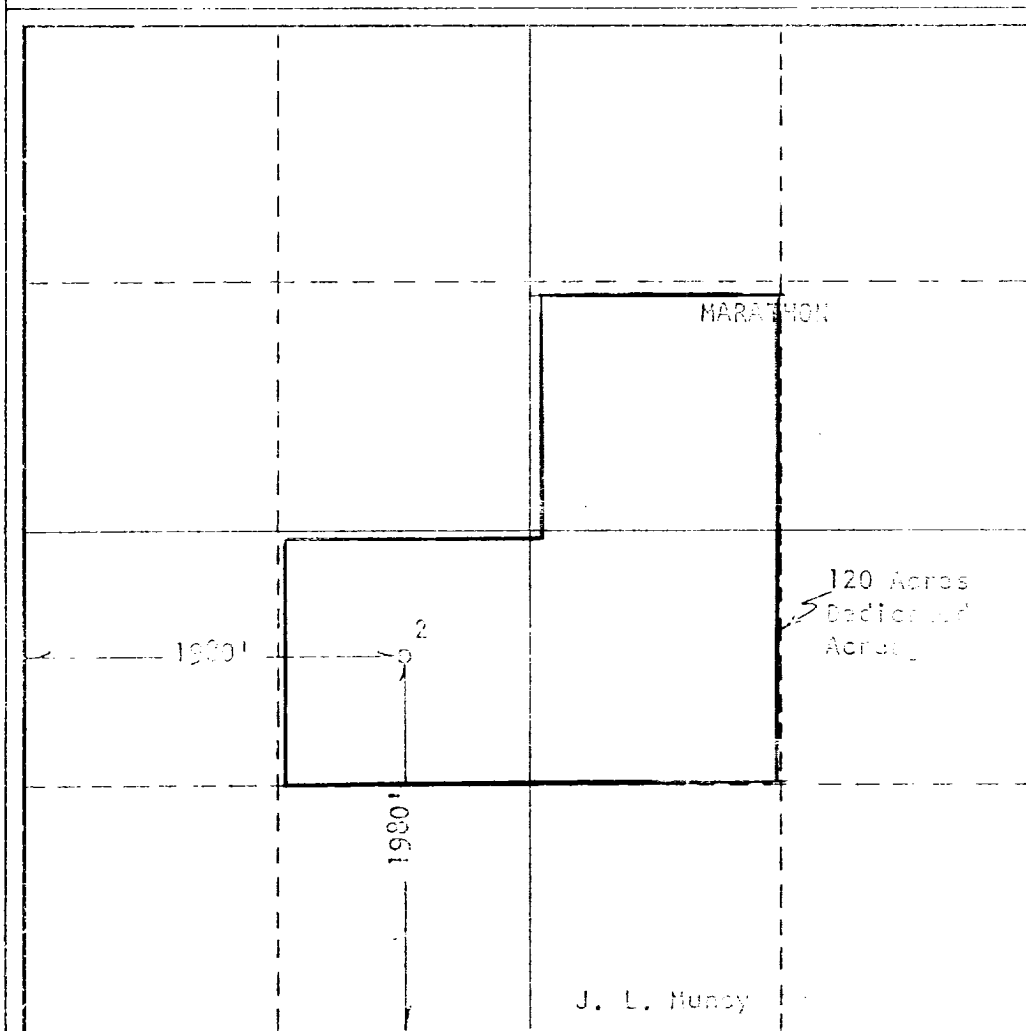
Operator <b>MARATHON OIL COMPANY</b>		Lessee <b>J. L. MUNCY</b>		Well No. <b>2</b>
Unit Letter <b>K</b>	Section <b>24</b>	Township <b>22 SOUTH</b>	Range <b>37 EAST</b>	County <b>LEA</b>
Actual Postage Location of Well:				
<b>1980</b> feet from the <b>SOUTH</b> line and		<b>1980</b> feet from the <b>WEST</b> line		
Ground Level Elev.	Producing Formation <b>BLINEBRY</b>	Pool <b>BLINEBRY GAS</b>	Dedicated Acreage <b>120</b>	

- Outline the acreage dedicated to the subject well by colored pencil or hachure marks on the plat below.
- If more than one lease is dedicated to the well, outline each and identify the ownership thereof (both as to interest and royalty).
- If more than one lease of different ownership is dedicated to the well, have the interests of all owners been dated by communitization, unitization, force-pooling, etc?

☒ Yes    ☐ No    If answer is "yes," type of consolidation Operating Agreement

If answer is "no," list the owners and tract descriptions which have actually been consolidated. (Use reverse this form if necessary.) \_\_\_\_\_

No allowable will be assigned to the well until all interests have been consolidated (by communitization, a forced-pooling, or otherwise) or until a non-standard unit, eliminating such interests, has been approved by the Commission.



**CERTIFICATION**

*I hereby certify that the information contained herein is true and correct to the best of my knowledge and belief.*

*J. W. Younger*  
Name

J. W. Younger  
Position

Area Petroleum  
Company

Marathon Oil Co  
Company

May 1, 1968  
Date

*I hereby certify that the shown on this plat was plotted from actual surveys made under my supervision, and it is true and correct to the knowledge and belief.*

\_\_\_\_\_  
Date Surveyed

\_\_\_\_\_  
Registered Professional Engineer or Licensed Surveyor

\_\_\_\_\_  
Certificate No.

