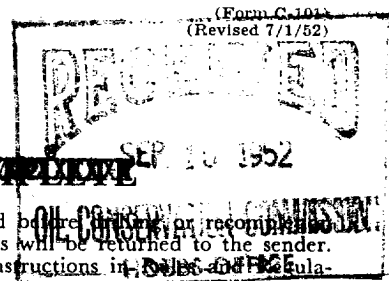


NEW MEXICO OIL CONSERVATION COMMISSION  
Santa Fe, New Mexico



NOTICE OF INTENTION TO DRILL OR RECOMPLETION

Notice must be given to the District Office of the Oil Conservation Commission and approval obtained before drilling or recompleting begins. If changes in the proposed plan are considered advisable, a copy of this notice showing such changes will be returned to the sender. Submit this notice in **QUINTUPLICATE**. One copy will be returned following approval. See additional instructions in **Rules and Regulations** of the Commission.

**Midland, Texas**  
(Place)

**September 18, 1952**  
(Date)

OIL CONSERVATION COMMISSION  
SANTA FE, NEW MEXICO

Gentlemen:

You are hereby notified that it is our intention to commence the (Drilling) (~~Recompletion~~) of a well to be known as

**Humble Oil & Refining Company**

(Co. Lease #37721)

(Company or Operator)

**New Mexico State "N"**  
(Lease)

Well No. **10** (Gas), in **"E"** (Unit). The well is

located **1900** feet from the **North** line and **660** feet from the

**West**

line of Section **31**, T. **22-S**, R. **37-E**, NMPM.

(GIVE LOCATION FROM SECTION LINE) **South Emance Gas** Pool, **Lea** County

If State Land the Oil and Gas Lease is No.

If patented land the owner is

Address

We propose to drill well with drilling equipment as follows: **Rotary**

The status of plugging bond is **On file in Commission Office**

Drilling Contractor **Unknown at this time**

We intend to complete this well in the **Queen Sand** formation at an approximate depth of **3500** feet.

See attached plat

CASING PROGRAM

We propose to use the following strings of Casing and to cement them as indicated:

| Size of Hole  | Size of Casing | Weight per Foot | New or Second Hand | Depth        | Sacks Cement   |
|---------------|----------------|-----------------|--------------------|--------------|----------------|
| <b>12"</b>    | <b>8-5/8"</b>  | <b>29.75#</b>   | <b>Second-Hand</b> | <b>450'</b>  | <b>300 sx.</b> |
| <b>6-3/4"</b> | <b>5-1/2"</b>  | <b>14#</b>      | <b>New</b>         | <b>3500'</b> | <b>800 sx.</b> |
|               |                |                 |                    |              |                |
|               |                |                 |                    |              |                |

If changes in the above plans become advisable we will notify you immediately.

ADDITIONAL INFORMATION (If recompletion give full details of proposed plan of work.)

SEP 19 1952

Approved  
Except as follows: **cement must return**

OIL CONSERVATION COMMISSION

By **Roy Yarbrough Jr.**

Title **Oil & Gas Inspector**

Sincerely yours,

**Humble Oil & Refining Company**

(Company or Operator)

By **J. W. House**

Position **Division Chief Clerk**

Send Communications regarding well to

Name **J. W. House**

Address **Box 1600, Midland, Texas**