

District I  
PO Box 1980, Hobbs, NM 88241 1980  
District II  
PO Drawer DD, Artesia, NM 88211-0719  
District III  
1000 Rio Brazos Rd., Aztec, NM 87410  
District IV  
PO Box 2088, Santa Fe, NM 87504-2088

State of New Mexico  
Energy, Minerals & Natural Resources Department

OIL CONSERVATION DIVISION  
PO Box 2088  
Santa Fe, NM 87504-2088

Form C-101  
Revised February 10, 1994  
Instructions on back  
Submit to Appropriate District Office  
State Lease - 6 Copies  
Fee Lease - 5 Copies

☐ AMENDED REPORT

APPLICATION FOR PERMIT TO DRILL, RE-ENTER, DEEPEN, PLUGBACK, OR ADD A ZONE

Operator Name and Address.  Raptor Resources, Inc. P.O. Box 160430 Austin, Tx. 78716-0430		OGRID No.  162791
		API Number 30 - 025-10721
Property Code  24669	Property Name  State 'A' A/C 1	Well No.  91

' Surface Location

UL or lot no.	Section	Township	Range	Lot Idn	Feet from the	North/South line	Feet from the	East/West line	County
C	15	23S	36E		660	North	2310	West	Lea

s Proposed Bottom Hole Location If Different From Surface

UL or lot no.	Section	Township	Range	Lot Idn	Feet from the	North/South line	Feet from the	East/West line	County
Proposed Pool 1  Jalmat, TnsI, Yts, 7-Rivers (Pro Gas) (79240)					Proposed Pool 2				

" Work Type Code	" Well Type Code	" Cable/Rotary	" Lease type Code	14 Ground Level Elevation
P	G	R	S	
16 Multiple	17 Proposed Depth	18 Formation	19 Contractor	20 Spud Date
		Yates		

21 Proposed Casing and Cement Program

Hole Size	Casing Size	Casing weight/foot	Setting Depth	Sacks of Cement	Estimated TOC

Describe the proposed program. If this application is to DEEPEN or PLUG BACK give the data on the present productive zone and proposed new productive zone. Describe the blowout prevention program, if any. Use additional sheets if necessary.

Current Status: e Langlie Mattix 7 Rvrs Qn GB

PROPOSED OPERATIONS:

1. Set CIBP above the Langlie Mattix 7 Rvrs Perforations @ 3258'.
2. Perforate the Tansill-Yates from 2850' - 3200
3. Adicize
4. Frac
5. POP

23 I hereby certify that the information given above is true and complete to the best of my knowledge and belief.

Signature:

Printed name:

Bill R. Keathly

Title:

R egulatory Agent for Raptor

Date:

8-15-99

Phone

(915) 697-1609

OIL CONSERVATION DIVISION

Approved by:

Title:

Approval Date:

Conditions of Approval:

Attached

Expiration Date:

District I  
PO Box 1980, Hobbs. NM 88241-1980  
District II  
PO Drawer DD, Artesia, NM 88211-0719  
District III  
1000 Rio Brazos Rd. Aztec, NM 87410  
District IV  
PO Box 2088, Santa Fe. NM 87504-2088

State of New Mexico  
Energy, Minerals & Natural Resources Department

OIL CONSERVATION DIVISION  
PO Box 2088  
Santa Fe, NM 87504-2088

Form C-

Revised February 21, 1994  
Instructions on back

Submit to Appropriate District Of  
State Lease - 4 Copies  
Fee Lease - 3 Copies

☐ AMENDED REPORT

WELL LOCATION AND ACREAGE DEDICATION PLAT

API Number 30-025-10721		2 Pool Code 79240		3 Pool Name Jalmat, Tnsi, Yts, 7-Rivers (Pro Gas)	
4 Property Code 24669		5 Property Name State 'A' A/C I			6 Well Number 71
7 OGRID No. 162791		8 Operator Name Raptor Resources, Inc,			9 Elevation

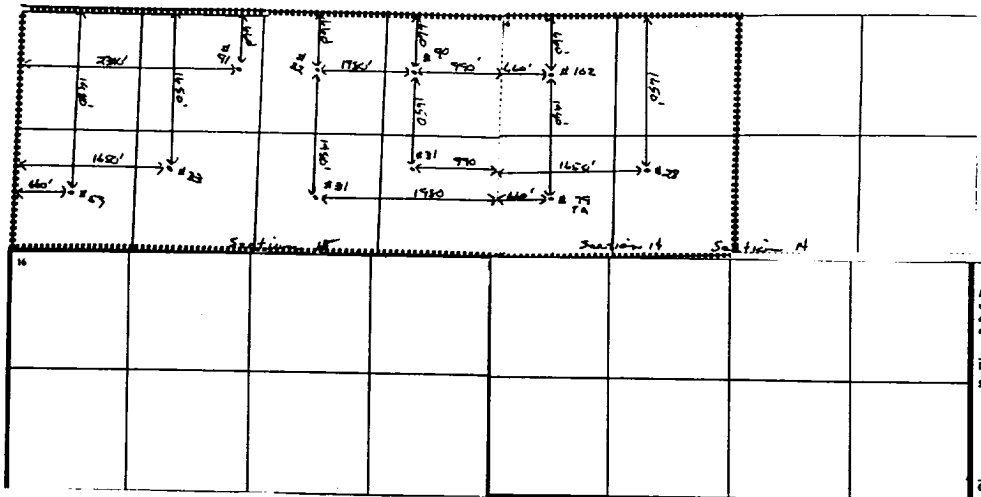
10 Surface Location

UL or lot no.	Section	Township	Range	Lot Idn	Feet from the	North/South line	Feet from the	East/West line	County
C	15	23S	36E		660	North	2310	West	Lea

11 Bottom Hole Location If Different From Surface

UL or lot no.	Section	Township	Range	Lot Idn	Feet from the	North/South line	Feet from the	East/West line	County
12 Dedicated Acres 480	13 Joint or Infill	14 Consolidation Code	15 Order No. NSL-2730-C<SD> Applied For						

NO ALLOWABLE WILL BE ASSIGNED TO THIS COMPLETION UNTIL ALL INTERESTS HAVE BEEN CONSOLIDATED  
OR A NON-STANDARD UNIT HAS BEEN APPROVED BY THE DIVISION



17 OPERATOR CERTIFICATION

I hereby certify that the information contained herein is true and complete to the best of my knowledge and belief.

*Bill R. Keathly*  
Signature  
Printed Name  
Regulatory Agent - Raptor  
Title  
Date

18 SURVEYOR CERTIFICATION

I hereby certify that the well location shown on this plat was plotted from field notes of actual surveys made by me or under my supervision, and that the same is true and correct to the best of my belief.

Date of Survey  
Signature and Seal of Professional Surveyor:

Certificate Number