

**NEW MEXICO OIL CONSERVATION COMMISSION
WELL LOCATION AND ACREAGE DEDICATION PLAT**

Form C-102
Supersedes C-128
Effective 1-1-65

All distances must be from the outer boundaries of the Section.

Operator TEXAS PACIFIC OIL COMPANY, INC.			Lease DEC 24-1967 32-01-159		Well No. 33
Unit Letter F	Section 15	Township 23 - S	Range 36 - E	County Lea	
Actual Footage Location of Well:					
1650 feet from the NORTH line and		1650 feet from the WEST line			
Ground Level Elev. 3463 G.L.	Producing Formation Texas	Pool Jalant Gas		Dedicated Acreage: 160 Acres	

1. Outline the acreage dedicated to the subject well by colored pencil or hachure marks on the plat below.
2. If more than one lease is dedicated to the well, outline each and identify the ownership thereof (both as to working interest and royalty).
3. If more than one lease of different ownership is dedicated to the well, have the interests of all owners been consolidated by communitization, unitization, force-pooling, etc?

☐ Yes ☐ No If answer is "yes," type of consolidation _____

If answer is "no," list the owners and tract descriptions which have actually been consolidated. (Use reverse side of this form if necessary.) _____

No allowable will be assigned to the well until all interests have been consolidated (by communitization, unitization, forced-pooling, or otherwise) or until a non-standard unit, eliminating such interests, has been approved by the Commission.

Index No. 3892

Section 15			

CERTIFICATION

I hereby certify that the information contained herein is true and complete to the best of my knowledge and belief.

Original Signed by

Name
Sheldon Ward

Position
Vice Superintendent

Company
Texas Pacific Oil Company, Inc.

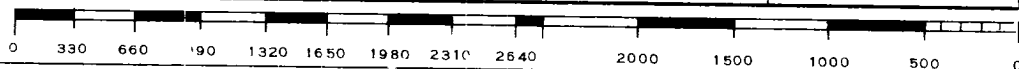
Date
December 24, 1967

I hereby certify that the well location shown on this plat was plotted from field notes of actual surveys made by me or under my supervision, and that the same is true and correct to the best of my knowledge and belief.

Date Surveyed

Registered Professional Engineer
and/or Land Surveyor

Certificate No.



**NEW MEXICO OIL CONSERVATION COMMISSION
WELL LOCATION AND ACREAGE DEDICATION PLAT**

Form C-102
Supersedes C-128
Effective 1-4-65

All distances must be from the outer boundaries of the Section.

Operator Texas Pacific Oil Company			Lease State "A" A/C-1 9 11 67		Well No. 33
Unit Letter F	Section 15	Township 23-S	Range 36-E	County Lea	
Actual Footage Location of Well: 1650 feet from the West line and 1650 feet from the North line					
Ground Level Elev. 3463	Producing Formation Yates		Pool Jalmat Gas		Dedicated Acreage: 200 Acres

1. Outline the acreage dedicated to the subject well by colored pencil or hachure marks on the plat below.
2. If more than one lease is dedicated to the well, outline each and identify the ownership thereof (both as to working interest and royalty).
3. If more than one lease of different ownership is dedicated to the well, have the interests of all owners been consolidated by communitization, unitization, force-pooling, etc?

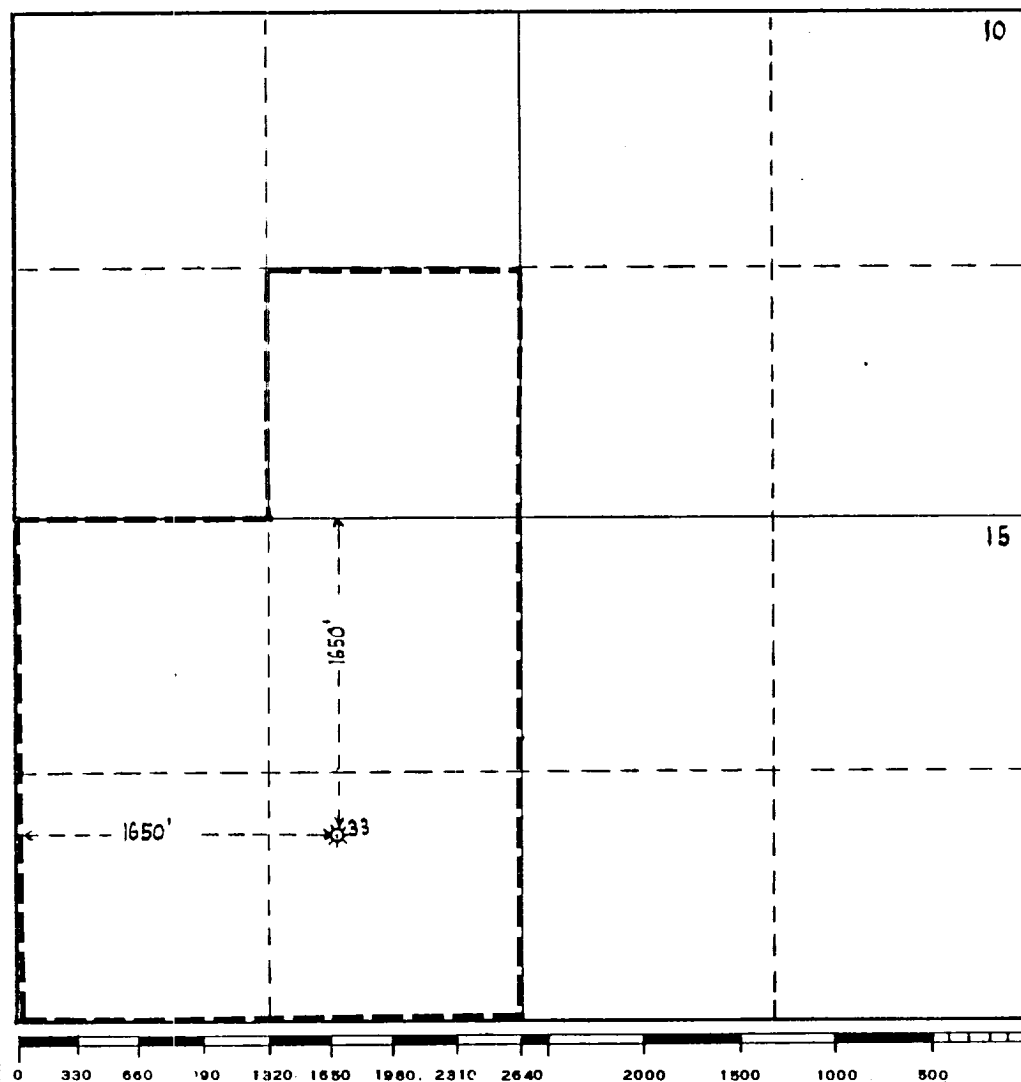
☐ Yes ☐ No If answer is "yes," type of consolidation _____

If answer is "no," list the owners and tract descriptions which have actually been consolidated. (Use reverse side of this form if necessary.) _____

No allowable will be assigned to the well until all interests have been consolidated (by communitization, unitization, forced-pooling, or otherwise) or until a non-standard unit, eliminating such interests, has been approved by the Commission.

Approved March 30, 1967

R-3209



CERTIFICATION

I hereby certify that the information contained herein is true and complete to the best of my knowledge and belief.

Ed. J. Smith

Name

District Adm. Supv.

Position

Texas Pacific Oil Company

Company

May 5, 1967

Date

I hereby certify that the well location shown on this plat was plotted from field notes of actual surveys made by me or under my supervision, and that the same is true and correct to the best of my knowledge and belief.

Date Surveyed

Registered Professional Engineer
and/or Land Surveyor

Certificate No.