

NEW MEXICO OIL CONSERVATION COMMISSION

Santa Fe, New Mexico

NOTICE OF INTENTION TO DRILL

Notice must be given to the Oil Conservation Commission or its proper agent and approval obtained before drilling begins. If changes in the proposed plan are considered advisable, a copy of this notice showing such changes will be returned to the sender. Submit this notice in triplicate. One copy will be returned following approval. See additional instructions in Rules and Regulations of the Commission.

Monument, New Mexico
PlaceJanuary 28, 1949
DateOIL CONSERVATION COMMISSION,
Santa Fe, New Mexico,

Gentlemen:

You are hereby notified that it is our intention to commence the drilling of a well to be known as

Amerada Petroleum CorporationState JCTWell No. 2in SW 1/4 NE 1/4

Company or Operator

Lease

of Sec 16, T 23S, R 36E, N. M., P. M., Cooper-Jal Field, Lea County.

N

The well is 1980 feet ~~xxx~~ (S.) of the North line and 1980 feet ~~xxx~~ (W.) of the East line of Sect. 16-23S-36E

(Give location from section or other legal subdivision lines. Cross out wrong directions.)

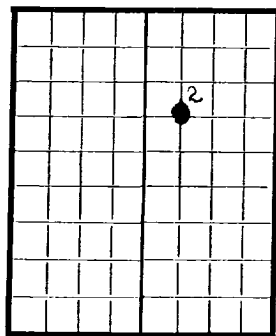
If state land the oil and gas lease is No. B-1431 Assignment No. _____

If patented land the owner is _____

Address _____

If government land the permittee is _____

Address _____

The lessee is Amerada Petroleum CorporationAddress Box 2040, Tulsa 2, Oklahoma

AREA 640 ACRES

LOCATE WELL CORRECTLY
the wayWe propose to drill well with drilling equipment as follows: Rotary tools allThe status of a bond for this well in conformance with Rule 39 of the General Rules and Regulations of the Commission is as follows: Blanket

We propose to use the following strings of casing and to land or cement them as indicated:

Size of Hole	Size of Casing	Weight Per Foot	New or Second Hand	Depth	Landed or Cemented	Sacks Cement
<u>11"</u>	<u>8 5/8"</u>	<u>32#</u>	<u>New</u>	<u>300'</u>	<u>Cemented</u>	<u>200</u>
<u>7 3/8"</u>	<u>5 1/2"</u>	<u>15.5#</u>	<u>New</u>	<u>3700'</u>	<u>Cemented</u>	<u>500</u>

If changes in the above plan become advisable we will notify you before cementing or landing casing. We estimate that the first productive oil or gas sand should occur at a depth of about 3700 feet.

Additional information:

Approved _____, 19

except as follows:

Return to top of well section on 5 1/2 casing

Sincerely yours,

Amerada Petroleum Corporation
Company or Operator

By _____

Position Asst. Dist. Supt.

Send communications regarding well to

Name Amerada Petroleum CorporationAddress Drawer D, Monument, New Mexico

OIL CONSERVATION COMMISSION,

By _____

Title _____

1. 1. The first step in the process of the
 2. formation of a new country is the
 3. establishment of a government.
 4. 2. The second step is the
 5. establishment of a legal system.
 6. 3. The third step is the
 7. establishment of a judicial system.
 8. 4. The fourth step is the
 9. establishment of a police force.
 10. 5. The fifth step is the
 11. establishment of a military force.
 12. 6. The sixth step is the
 13. establishment of a diplomatic corps.
 14. 7. The seventh step is the
 15. establishment of a foreign aid program.
 16. 8. The eighth step is the
 17. establishment of a foreign trade policy.
 18. 9. The ninth step is the
 19. establishment of a foreign investment policy.
 20. 10. The tenth step is the
 21. establishment of a foreign debt policy.
 22. 11. The eleventh step is the
 23. establishment of a foreign aid policy.
 24. 12. The twelfth step is the
 25. establishment of a foreign trade policy.
 26. 13. The thirteenth step is the
 27. establishment of a foreign investment policy.
 28. 14. The fourteenth step is the
 29. establishment of a foreign debt policy.
 30. 15. The fifteenth step is the
 31. establishment of a foreign aid policy.
 32. 16. The sixteenth step is the
 33. establishment of a foreign trade policy.
 34. 17. The seventeenth step is the
 35. establishment of a foreign investment policy.
 36. 18. The eighteenth step is the
 37. establishment of a foreign debt policy.
 38. 19. The nineteenth step is the
 39. establishment of a foreign aid policy.
 40. 20. The twentieth step is the
 41. establishment of a foreign trade policy.
 42. 21. The twenty-first step is the
 43. establishment of a foreign investment policy.
 44. 22. The twenty-second step is the
 45. establishment of a foreign debt policy.
 46. 23. The twenty-third step is the
 47. establishment of a foreign aid policy.
 48. 24. The twenty-fourth step is the
 49. establishment of a foreign trade policy.
 50. 25. The twenty-fifth step is the
 51. establishment of a foreign investment policy.
 52. 26. The twenty-sixth step is the
 53. establishment of a foreign debt policy.
 54. 27. The twenty-seventh step is the
 55. establishment of a foreign aid policy.
 56. 28. The twenty-eighth step is the
 57. establishment of a foreign trade policy.
 58. 29. The twenty-ninth step is the
 59. establishment of a foreign investment policy.
 60. 30. The thirtieth step is the
 61. establishment of a foreign debt policy.
 62. 31. The thirty-first step is the
 63. establishment of a foreign aid policy.
 64. 32. The thirty-second step is the
 65. establishment of a foreign trade policy.
 66. 33. The thirty-third step is the
 67. establishment of a foreign investment policy.
 68. 34. The thirty-fourth step is the
 69. establishment of a foreign debt policy.
 70. 35. The thirty-fifth step is the
 71. establishment of a foreign aid policy.
 72. 36. The thirty-sixth step is the
 73. establishment of a foreign trade policy.
 74. 37. The thirty-seventh step is the
 75. establishment of a foreign investment policy.
 76. 38. The thirty-eighth step is the
 77. establishment of a foreign debt policy.
 78. 39. The thirty-ninth step is the
 79. establishment of a foreign aid policy.
 80. 40. The fortieth step is the
 81. establishment of a foreign trade policy.
 82. 41. The forty-first step is the
 83. establishment of a foreign investment policy.
 84. 42. The forty-second step is the
 85. establishment of a foreign debt policy.
 86. 43. The forty-third step is the
 87. establishment of a foreign aid policy.
 88. 44. The forty-fourth step is the
 89. establishment of a foreign trade policy.
 90. 45. The forty-fifth step is the
 91. establishment of a foreign investment policy.
 92. 46. The forty-sixth step is the
 93. establishment of a foreign debt policy.
 94. 47. The forty-seventh step is the
 95. establishment of a foreign aid policy.
 96. 48. The forty-eighth step is the
 97. establishment of a foreign trade policy.
 98. 49. The forty-ninth step is the
 99. establishment of a foreign investment policy.
 100. 50. The fiftieth step is the
 101. establishment of a foreign debt policy.
 102. 51. The fifty-first step is the
 103. establishment of a foreign aid policy.
 104. 52. The fifty-second step is the
 105. establishment of a foreign trade policy.
 106. 53. The fifty-third step is the
 107. establishment of a foreign investment policy.
 108. 54. The fifty-fourth step is the
 109. establishment of a foreign debt policy.
 110. 55. The fifty-fifth step is the
 111. establishment of a foreign aid policy.
 112. 56. The fifty-sixth step is the
 113. establishment of a foreign trade policy.
 114. 57. The fifty-seventh step is the
 115. establishment of a foreign investment policy.
 116. 58. The fifty-eighth step is the
 117. establishment of a foreign debt policy.
 118. 59. The fifty-ninth step is the
 119. establishment of a foreign aid policy.
 120. 60. The sixtieth step is the
 121. establishment of a foreign trade policy.
 122. 61. The sixty-first step is the
 123. establishment of a foreign investment policy.
 124. 62. The sixty-second step is the
 125. establishment of a foreign debt policy.
 126. 63. The sixty-third step is the
 127. establishment of a foreign aid policy.
 128. 64. The sixty-fourth step is the
 129. establishment of a foreign trade policy.
 130. 65. The sixty-fifth step is the
 131. establishment of a foreign investment policy.
 132. 66. The sixty-sixth step is the
 133. establishment of a foreign debt policy.
 134. 67. The sixty-seventh step is the
 135. establishment of a foreign aid policy.
 136. 68. The sixty-eighth step is the
 137. establishment of a foreign trade policy.
 138. 69. The sixty-ninth step is the
 139. establishment of a foreign investment policy.
 140. 70. The seventieth step is the
 141. establishment of a foreign debt policy.
 142. 71. The seventy-first step is the
 143. establishment of a foreign aid policy.
 144. 72. The seventy-second step is the
 145. establishment of a foreign trade policy.
 146. 73. The seventy-third step is the
 147. establishment of a foreign investment policy.
 148. 74. The seventy-fourth step is the
 149. establishment of a foreign debt policy.
 150. 75. The seventy-fifth step is the
 151. establishment of a foreign aid policy.
 152. 76. The seventy-sixth step is the
 153. establishment of a foreign trade policy.
 154. 77. The seventy-seventh step is the
 155. establishment of a foreign investment policy.
 156. 78. The seventy-eighth step is the
 157. establishment of a foreign debt policy.
 158. 79. The seventy-ninth step is the
 159. establishment of a foreign aid policy.
 160. 80. The eightieth step is the
 161. establishment of a foreign trade policy.
 162. 81. The eighty-first step is the
 163. establishment of a foreign investment policy.
 164. 82. The eighty-second step is the
 165. establishment of a foreign debt policy.
 166. 83. The eighty-third step is the
 167. establishment of a foreign aid policy.
 168. 84. The eighty-fourth step is the
 169. establishment of a foreign trade policy.
 170. 85. The eighty-fifth step is the
 171. establishment of a foreign investment policy.
 172. 86. The eighty-sixth step is the
 173. establishment of a foreign debt policy.
 174. 87. The eighty-seventh step is the
 175. establishment of a foreign aid policy.
 176. 88. The eighty-eighth step is the
 177. establishment of a foreign trade policy.
 178. 89. The eighty-ninth step is the
 179. establishment of a foreign investment policy.
 180. 90. The ninetieth step is the
 181. establishment of a foreign debt policy.
 182. 91. The ninety

100-44369-100

NUMBER OF COPIES RECEIVED	
DISTRIBUTION	
SANTA FE	
FILE	
U.S.G.S	
LAND OFFICE	
TRANSPORTER	OIL
	GAS
PROBATION OFFICE	
OPERATOR	

NEW MEXICO OIL CONSERVATION COMMISSION
WELL LOCATION AND ACREAGE DEDICATION PLAT
 SEE INSTRUCTIONS FOR COMPLETING THIS FORM ON THE REVERSE SIDE

FORM C-128
 Revised 5/1/57

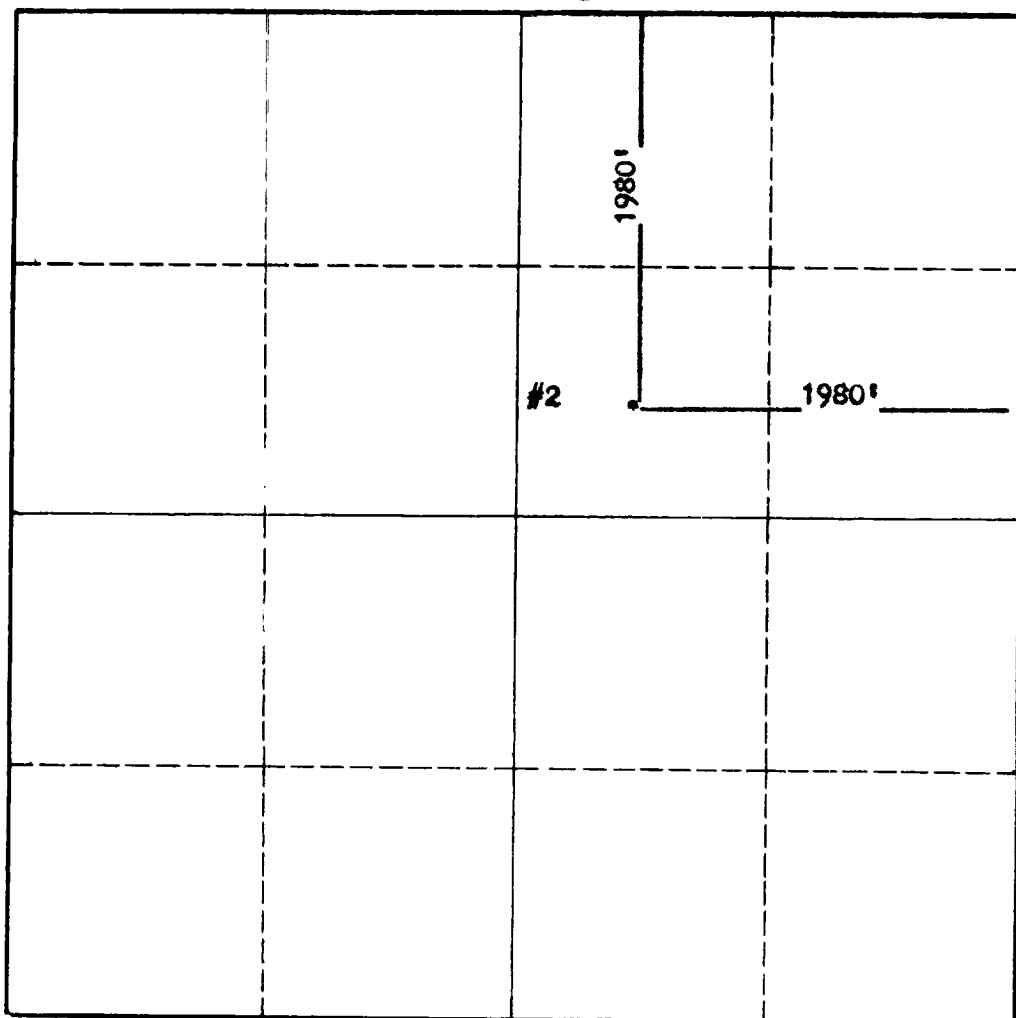
SECTION A

Operator Amerada Petroleum Corporation			Lease State JC "T"		Well No. 2
Unit Letter G	Section 16	Township 23-S	Range 27-E	County Lea	
Actual Footage Location of Well: 1980 feet from the North line and 1980 feet from the East line Ground Level Elev. 3459' Producing Formation Yates-Seven Rivers Pool Jalmar Dedicated Acreage: 160 Acres					

1. Is the Operator the only owner in the dedicated acreage outlined on the plat below? YES ☒ NO ____ . ("Owner" means the person who has the right to drill into and to produce from any pool and to appropriate the production either for himself or for himself and another. (65-3-29 (e) NMSA 1935 Comp.)
2. If the answer to question one is "no," have the interests of all the owners been consolidated by communitization agreement or otherwise? YES ____ NO ____ . If answer is "yes," Type of Consolidation _____
3. If the answer to question two is "no," list all the owners and their respective interests below:

Owner	Land Description

SECTION B



CERTIFICATION

I hereby certify that the information in SECTION A above is true and complete to the best of my knowledge and belief.

Name <i>W. C. ...</i>
Position District Superintendent
Company Amerada Petroleum Corp.
Date December 7, 1962

I hereby certify that the well location shown on the plat in SECTION B was plotted from field notes of actual surveys made by me or under my supervision, and that the same is true and correct to the best of my knowledge and belief.

Date Surveyed
Registered Professional Engineer and/or Land Surveyor
Certificate No.

0 330 660 990 1320 1650 1980 2310 2640 2000 1500 1000 500 0

INSTRUCTIONS FOR COMPLETION OF FORM C-128

1. Operator shall furnish and certify to the information called for in Section A.
2. Operator shall outline the dedicated acreage for *both* oil and gas wells on the plat in Section B.
3. A registered professional engineer or land surveyor registered in the State of New Mexico or approved by the Commission shall show on the plat the location of the well and certify this information in the space provided.
4. All distances shown on the plat must be from the outer boundaries of the Section.
5. If additional space is needed for listing owners and their respective interests as required in question 3 of Section A, please use space below.