

UNITED STATES
DEPARTMENT OF THE INTERIOR
GEOLOGICAL SURVEY

APPLICATION FOR PERMIT TO DRILL, DEEPEN, OR PLUG BACK

1a. TYPE OF WORK

DRILL ☐DEEPEN ☒PLUG BACK ☐

b. TYPE OF WELL

OIL
WELL ☒GAS
WELL ☐

OTHER

SINGLE
ZONE ☐MULTIPLE
ZONE ☒

2. NAME OF OPERATOR

TEXACO INC.

3. ADDRESS OF OPERATOR

P. O. Box 728 - Hobbs, New Mexico 88240

4. LOCATION OF WELL (Report location clearly and in accordance with any State requirements.)*

At surface

1980' FNL & 1980' FNL

At proposed prod. zone Same

14. DISTANCE IN MILES AND DIRECTION FROM NEAREST TOWN OR POST OFFICE*

7 miles southeast of Eunice, New Mexico

15. DISTANCE FROM PROPOSED*

LOCATION TO NEAREST

PROPERTY OR LEASE LINE, FT.

(Also to nearest drlg. unit line, if any)

660'

18. DISTANCE FROM PROPOSED LOCATION*

TO NEAREST WELL, DRILLING, COMPLETED,
OR APPLIED FOR, ON THIS LEASE, FT.

1320'

16. NO. OF ACRES IN LEASE

1855.12

19. PROPOSED DEPTH

7450'

17. NO. OF ACRES ASSIGNED
TO THIS WELL

40

20. ROTARY OR CABLE TOOLS

Rotary

21. ELEVATIONS (Show whether DF, RT, GR, etc.)

3382' GL

22. APPROX. DATE WORK WILL START*

October 22, 1976

23.

PROPOSED CASING AND CEMENTING PROGRAM

SIZE OF HOLE	SIZE OF CASING	WEIGHT PER FOOT	SETTING DEPTH	QUANTITY OF CEMENT
* 17-1/2	13-3/8"	48	257'	300 (Circ.)
* 12-1/4	9-5/8"	36	2580'	1650 (Circ.)
* 8-3/4	7"	23	6893'	500 (Above 5000' Calc.)
6-1/8	4-1/2" Liner	11.6	7450'	** 225

* Casing already set in place.

** 225 sx Class 'H' w/15% HALAD-22 and 5 lb./sx KCL. If necessary squeeze top of liner with 50 sx. Liner top @ 6800'.

FORMATION TOP - Wantz (Granite Wash) 7350'

This well is presently a triple completion in the Blinebry, Tubb (Gas) and Drinkard formations at a total depth of 6995'. A bridge plug is set above the Drinkard formation at 6300'. TEXACO proposes to drill out the bridge plug and squeeze the Blinebry perforations (5624'-5807'), Tubb (Gas) perforations (6156'-6244') and Drinkard open hole (6893'-6995') with Class 'H' cement with 3 lb./sx salt and .3% Halad-22. The well will be deepened to a t.d. of 7450' to test the Wantz (Granite Wash) formation. The Drinkard will also be tested. If well proves to be productive it will be dually completed in the Drinkard and Granite Wash formations.

IN ABOVE SPACE DESCRIBE PROPOSED PROGRAM: If proposal is to deepen or plug back, give data on present productive zone and proposed new productive zone. If proposal is to drill or deepen directionally, give pertinent data on subsurface locations and measured and true vertical depths. Give blowout preventer program, if any.

24.

SIGNED

J. G. BEEVINS, JR.

TITLE

ASST. DIST. SUPT.

DATE

10-15-76

(This space for Federal or State office use)

PERMIT NO.

APPROVAL DATE

APPROVED
AS AMENDED

OCT 18 1976

ARTHUR R. BROWN
DISTRICT ENGINEER

DATE

APPROVED BY

CONDITIONS OF APPROVAL, IF ANY:

SEE ATTACHED FOR
CONDITIONS OF APPROVAL

*See Instructions On Reverse Side

NEW MEXICO OIL CONSERVATION COMMISSION
WELL LOCATION AND ACREAGE DEDICATION PL

Form C-102
 Supersedes C-128
 Effective 1-1-65

All distances must be from the outer boundaries of the Section.

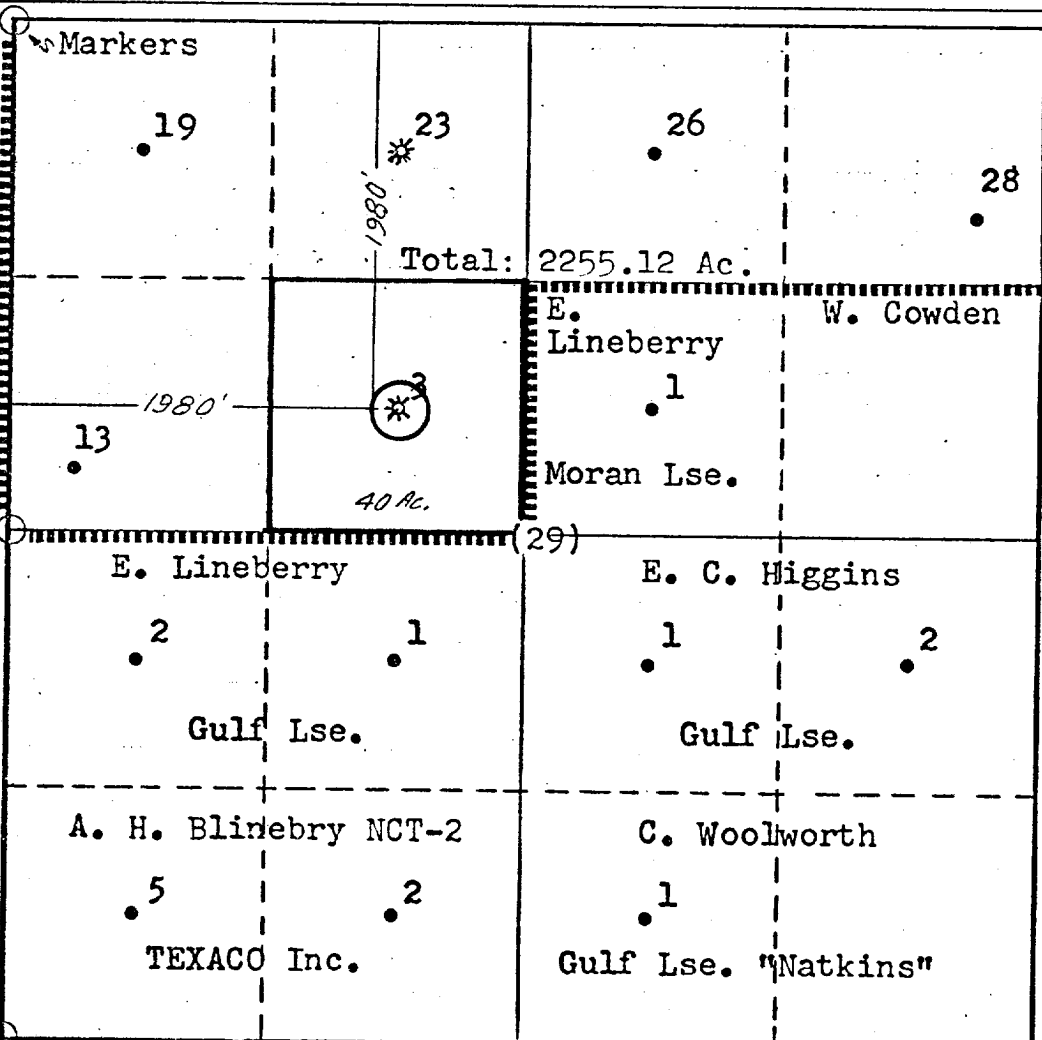
Operator TEXACO Inc.			Lease A. H. Blinebry Fed. NCT-1		Well No. 3
Unit Letter F	Section 29	Township 22 South	Range 38 East	County Lea	
Actual Footage Location of Well: 1980' feet from the North line and 1980' feet from the West line Sec. 29					
Ground Level Elev. 3382	Producing Formation Drinkard, Wantz Granite Wash	Pool Drinkard, Wantz Granite Wash	Dedicated Acreage: 40 Acres		

1. Outline the acreage dedicated to the subject well by colored pencil or hachure marks on the plat below.
2. If more than one lease is dedicated to the well, outline each and identify the ownership thereof (both as to working interest and royalty).
3. If more than one lease of different ownership is dedicated to the well, have the interests of all owners been consolidated by communitization, unitization, force-pooling, etc?

☐ Yes ☐ No If answer is "yes," type of consolidation _____

If answer is "no," list the owners and tract descriptions which have actually been consolidated. (Use reverse side of this form if necessary.) _____

No allowable will be assigned to the well until all interests have been consolidated (by communitization, unitization, forced-pooling, or otherwise) or until a non-standard unit, eliminating such interests, has been approved by the Commission.



CERTIFICATION	
I hereby certify that the information contained herein is true and complete to the best of my knowledge and belief.	
<i>B. L. Eiland</i>	
Name	B. L. Eiland
Position	Division Surveyor
Company	TEXACO INC.
Date	October 5, 1976
I hereby certify that the well location shown on this plat was plotted from field notes of actual surveys made by me or under my supervision, and that the same is true and correct to the best of my knowledge and belief.	
Date Surveyed	November 18, 1945
Registered Professional Engineer and/or Land Surveyor <i>B. L. Eiland</i>	
Certificate No.	4386

U. S. Geological Survey
P. O. Box 1157
Hobbs, New Mexico 88240

HOBBS DISTRICT

CONDITIONS OF APPROVAL:

1. The Hobbs office (telephone (505) 393-3612 is to be notified when workover operations are to be commenced.
2. Blowout prevention equipment is required.
3. N.M.O.C.C. approval is required for dual completion.