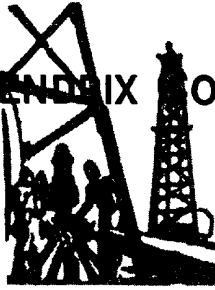


JOHN H. HENDRIX CORPORATION



MAILING ADDRESS
P.O. BOX 3040
MIDLAND, TX 79702-3040

(915) 684-6631
FAX (915) 684-7317
110 N. MARIENFELD, SUITE 400
MIDLAND, TEXAS 79701-4412

October 21, 1997

New Mexico Oil Conservation
Division
Hobbs District Office
P. O. Box 1980
Hobbs, NM 88241-1980

Attn: Mr. Chris Williams

RE: Packer Leakage Tests
J. R. Cone Gas Com #1 - N, Sec. 26, T21S, R37E
Amoco State "S" #3 - E, Sec. 32, T22S, R38E

Gentlemen:

In your letter of September 29, 1997, you advised that information failed to confirm separation of production from the Blinebry and Tubb Zones in the above wells.

Please be advised that we have run a retrievable bridge plug in the Amoco State "S" No. 3 well, and it is now a single Blinebry producer. A C-103 reflecting this has been sent to the OCD. We plan to resume the packer leakage test on the J. R. Cone Gas Com #1 starting October 27, 1997. It is doubtful it will be satisfactory due to the pumping equipment on the Tubb Zone. If it does not test we will either squeeze the Blinebry or obtain permission to downhole commingle. If the October 27th date is not satisfactory, please call Marvin Burrows at (505) 394-2649.

Thank you for your consideration in this matter. If you have additional questions please call.

Yours very truly,

Ronnie H. Westbrook
Ronnie H. Westbrook

RHW/ah



STATE OF NEW MEXICO
ENERGY, MINERALS AND NATURAL RESOURCES DEPARTMENT

OIL CONSERVATION DIVISION
HOBBS DISTRICT OFFICE

September 29, 1997

POST OFFICE BOX 1980
HOBBS, NEW MEXICO 88241-1980
(505) 383-6181

John H. Hendrix Corporation
P. O. Box 3040
Midland, Texas 79702

Re: Packer Leakage tests
J. R. Cone Gas Com #1-N, Sec. 26, T21S, R37E
Amoco State "S" #3-E, Sec. 32, T22S, R38E

Gentlemen:

I have received and evaluated, but did not approve, the packer leakage tests on the above referenced wells.

The information available fails to confirm separation of production from the Blinbry and Tubb zones in these wells. We are returning copies of the sheets and charts for your information.

We request that you re-test the wells using the criteria outlined in Division Rule 112.

We request 24 hours notice prior to these tests in order to witness the operation.

Very truly yours

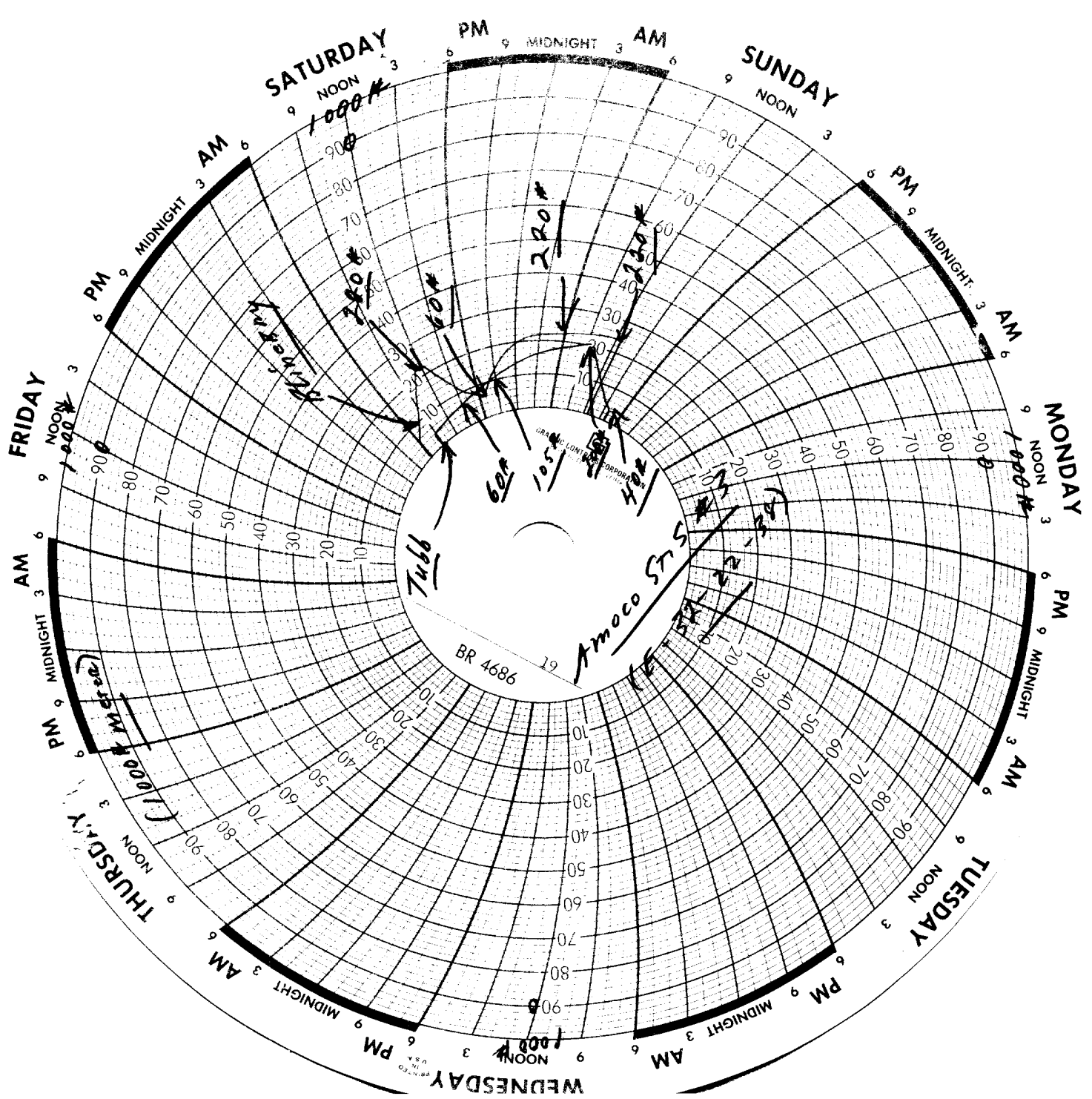
OIL CONSERVATION DIVISION

Chris Williams
Supervisor, District I

CW:bp

File

Enclosure



DISTRICT I
P.O. Box 1980, Hobbs, NM 88240

DISTRICT II
P.O. Drawer DD, Artesia, NM 88210

OIL CONSERVATION DIVISION
P.O. Box 2088
Santa Fe, New Mexico 87504-2088

This form is not to be used for
reporting packer leakage tests in
Northwest New Mexico

SOUTHEAST NEW MEXICO PACKER LEAKAGE TEST

Operator John H. Hendrix Corp.			Lease Amoco State S			Well No. 3	
Location of Well	Unit E	Sec. 32	Twp 22	Rge 38	County Lea		
Name of Reservoir or Pool			Type of Prod. (Oil or Gas)	Method of Prod. Flow, Art Lift	Prod. Medium (Tbg. or Csg)	Choke Size	
Upper Compl	Blinebry		Oil & Gas	Pump	tbg	32/64	
Lower Compl	Tubb		Oil & Gas	T.A.	tbg (t.a.)	-0-	

FLOW TEST NO. 1

Both zones shut-in at (hour, date): 6:00 am 8/2/97

	Upper Completion	Lower Completion
Well opened at (hour, date): <u>12:00 PM 8/2/97</u>	X	
Indicate by (X) the zone producing.....		
Pressure at beginning of test.....	220	60
Stabilized? (Yes or No).....	yes	no
Maximum pressure during test.....	220	105
Minimum pressure during test.....	60	60
Pressure at conclusion of test.....	60	105
Pressure change during test (Maximum minus Minimum).....	160	45
Was pressure change an increase or a decrease?.....	decrease	increase
Well closed at (hour, date): <u>6:00 PM 8/2/97</u>	Total Time On Production <u>6 hours</u>	
Oil Production During Test: <u>1/2</u> bbls; Grav. <u>42</u>	Gas Production During Test <u>80</u>	MCF; GOR <u>160,000</u>
Remarks <u>no evidence of communication</u>		

FLOW TEST NO. 2

Well opened at (hour, date): 6:00 am 8/3/97-tubb zone blown down
preceding test.

	Upper Completion	Lower Completion
Indicate by (X) the zone producing.....		X
Pressure at beginning of test.....	220	200
Stabilized? (Yes or No).....	yes	yes
Maximum pressure during test.....	220	200
Minimum pressure during test.....	220	40
Pressure at conclusion of test.....	220	40
Pressure change during test (Maximum minus Minimum).....	0	160
Was pressure change an increase or a decrease?.....	none	decrease
Well closed at (hour, date) <u>12:00 pm 8/3/97</u>	Total time on Production	
Oil production During Test: <u>0</u> bbls; Grav. <u>--</u>	Gas Production During Test <u>0</u>	MCF; GOR <u>0</u>
Remarks <u>tubb zone t.a. flowed for testing purposes only</u>		

OPERATOR CERTIFICATE OF COMPLIANCE

I hereby certify that the information contained herein is true
and completed to the best of my knowledge

John H. Hendrix Corporation

Operator

Marvin Burrows
Signature

Marvin Burrows-Production Supt.

Printed Name

Title

9-3-97
Date

505-394-2649
Telephone No.

OIL CONSERVATION DIVISION

Date Approved

By

Title