

UNITED STATES  
DEPARTMENT OF THE INTERIOR  
GEOLOGICAL SURVEY

## APPLICATION FOR PERMIT TO DRILL, DEEPEN, OR PLUG BACK

## 1a. TYPE OF WORK

DRILL ☐DEEPEN ☒PLUG BACK ☐

## b. TYPE OF WELL

OIL  
WELL ☒GAS  
WELL ☐

OTHER

SINGLE  
ZONE ☐MULTIPLE  
ZONE ☒

## 2. NAME OF OPERATOR

TEXACO INC.

## 3. ADDRESS OF OPERATOR

P. O. Box 728 - Hobbs, New Mexico 88240

## 4. LOCATION OF WELL (Report location clearly and in accordance with any State requirements.)\*

At surface

330' FWL &amp; 1980' FNL

At proposed prod. zone

Same

## 14. DISTANCE IN MILES AND DIRECTION FROM NEAREST TOWN OR POST OFFICE\*

8 miles southeast of Eunice, New Mexico

## 15. DISTANCE FROM PROPOSED\*

LOCATION TO NEAREST  
PROPERTY OR LEASE LINE, FT.  
(Also to nearest drlg. unit line, if any)

330'

## 16. NO. OF ACRES IN LEASE

1855.12

17. NO. OF ACRES ASSIGNED  
TO THIS WELL

40

## 18. DISTANCE FROM PROPOSED LOCATION\*

TO NEAREST WELL, DRILLING, COMPLETED,  
OR APPLIED FOR, ON THIS LEASE, FT.

990'

## 19. PROPOSED DEPTH

7600'

## 20. ROTARY OR CABLE TOOLS

Rotary

## 21. ELEVATIONS (Show whether DF, RT, GR, etc.)

3377' GR

## 22. APPROX. DATE WORK WILL START\*

October 22, 1976

## 23.

## PROPOSED CASING AND CEMENTING PROGRAM

SIZE OF HOLE	SIZE OF CASING	WEIGHT PER FOOT	SETTING DEPTH	QUANTITY OF CEMENT
* 17-1/2	13-3/8	48	300	325 sx (Cmt. circ.)
* 12-1/4	9-5/8	32.2 & 36	3058	1600 sx (Cmt. circ.)
* 8-3/4	7 & 7-5/8	20, 23, 26 & 40	6299	400 sx (Calc cmt top @ 2415')
6-1/8	4-1/2	11.6	7600	** 300 sx

\* Casing already set in place

\*\* 300 sx Class 'H' w/ .5% HALAD-22 and 5 lb./sx KCL. If necessary squeeze top  
of liner w/ 50 sx. (Top of liner to be @ 6200'.)

FORMATIONS TOPS: Drinkard - 6430', Abo Marker - 6730', Wantz Granite Wash - 7497'

This well is presently a triple completion in the South Paddock, Blinebry and Tubb (Gas) formations at a total depth of 6299'. TEXACO proposed to squeeze the South Paddock perforations (5210'-5228'), Blinebry perforations (5584'-5800') and Tubb (Gas) perforations (6150'-6230') with Class 'H' cement with 3 lb./sx salt and .3% Halad-22. The well will be deepened to a total depth of 7600' to test the Wantz (Granite Wash) formation. If well proves to be productive it will be a single completion in the Wantz (Granite Wash) formation.

IN ABOVE SPACE DESCRIBE PROPOSED PROGRAM: If proposal is to deepen or plug back, give data on present productive zone and proposed new productive zone. If proposal is to drill or deepen directionally, give pertinent data on subsurface locations and measured and true vertical depths. Give blowout preventer program, if any.

## 24.

SIGNED

V. G. JOHNSTON

TITLE

ASST. DIST. SUPT.

DATE

10-25-76

(This space for Federal or State office use)

PERMIT NO.

APPROVAL DATE

APPROVED BY

TITLE

CONDITIONS OF APPROVAL, IF ANY:

CORRECTED COPY

\*See Instructions On Reverse Side

**RECEIVED**

**NOV 2 1976**

**OIL CONSERVATION COMM.  
HOBBS, N. M.**

UNITED STATES  
DEPARTMENT OF THE INTERIOR  
GEOLOGICAL SURVEY

APPLICATION FOR PERMIT TO DRILL, DEEPEN, OR PLUG BACK

1a. TYPE OF WORK

DRILL ☐

DEEPEN ☒

PLUG BACK ☐

b. TYPE OF WELL

OIL WELL ☒

GAS WELL ☐

OTHER

SINGLE ZONE ☐

MULTIPLE ZONE ☒

2. NAME OF OPERATOR

TEXACO INC.

3. ADDRESS OF OPERATOR

P. O. Box 728 - Hobbs, New Mexico 88240

4. LOCATION OF WELL (Report location clearly and in accordance with any State requirements.)\*

At surface 330' FWL & 1980' FNL

At proposed prod. zone Same

14. DISTANCE IN MILES AND DIRECTION FROM NEAREST TOWN OR POST OFFICE\*

8 miles southeast of Eunice, New Mexico

15. DISTANCE FROM PROPOSED\*

LOCATION TO NEAREST PROPERTY OR LEASE LINE, FT. (Also to nearest drlg. unit line, if any)

330'

18. DISTANCE FROM PROPOSED LOCATION\* TO NEAREST WELL, DRILLING, COMPLETED, OR APPLIED FOR, ON THIS LEASE, FT.

990'

16. NO. OF ACRES IN LEASE

1855.12

19. PROPOSED DEPTH

7600'

17. NO. OF ACRES ASSIGNED TO THIS WELL

40

20. ROTARY OR CABLE TOOLS

Rotary

21. ELEVATIONS (Show whether DF, RT, GR, etc.)

3377' GR

22. APPROX. DATE WORK WILL START\*

October 22, 1976

PROPOSED CASING AND CEMENTING PROGRAM

SIZE OF HOLE	SIZE OF CASING	WEIGHT PER FOOT	SETTING DEPTH	QUANTITY OF CEMENT
* 17-1/2"	13-3/8"	48	300'	325 sx (Cmt. circ.)
* 12-1/4"	9-5/8"	32.2 & 36	3058'	1600 sx (Cmt. circ.)
* 8-3/4"	7" & 7-5/8"	20,23,26 & 40	6299'	400 sx (Calc cmt top @ 2415')
6-1/8"	4-1/2"	11.6	7600'	** 300 sx

\* Casing already set in place.

\*\* 300 sx Class 'H' w/.5% HALAD-22 and 5 lb./sx KCL. If necessary, squeeze top of liner w/50 sx. (Top of liner to be @ 6200'.)

FORMATIONS TOPS: Drinkard - 6430', Abo Marker - 6730', Wantz Granite Wash - 7497'

This well is presently a triple completion in the South Paddock, Blinebry and Tubb (Gas) formations at a total depth of 6299'. TEXACO proposed to squeeze the South Paddock perforations (5210'-5228'), Blinebry perforations (5584'-5800') and Tubb (Gas) perforations (6150'-6230') with Class 'H' cement with 3 lb./sx salt and .3% Halad-22. The well will be deepened to a total depth of 7600' to test the Wantz (Granite Wash) formation. The Drinkard formation will also be tested. If well proves to be productive it will be dually completed in the Drinkard and Granite Wash formations.

IN ABOVE SPACE DESCRIBE PROPOSED PROGRAM: If proposal is to deepen or plug back, give data on present productive zone and proposed new productive zone. If proposal is to drill or deepen directionally, give pertinent data on subsurface locations and measured and true vertical depths. Give blowout preventer program, if any.

24.

SIGNED

J. G. BLEVINS, JR.

TITLE

ASST. DIST. SUPT.

DATE

10-15-76

(This space for Federal or State office use)

PERMIT NO.

APPROVAL DATE

APPROVED BY

CONDITIONS OF APPROVAL, IF ANY:

SEE ATTACHED FOR  
CONDITIONS OF APPROVAL

APPROVED  
AS AMENDED  
OCT 18 1976  
ARTHUR R. BROWN  
DISTRICT ENGINEER

\*See Instructions On Reverse Side

**NEW MEXICO OIL CONSERVATION COMMISSION  
WELL LOCATION AND ACREAGE DEDICATION PLAT**

Form C-102  
Supersedes C-128  
Effective 1-1-65

All distances must be from the outer boundaries of the Section.

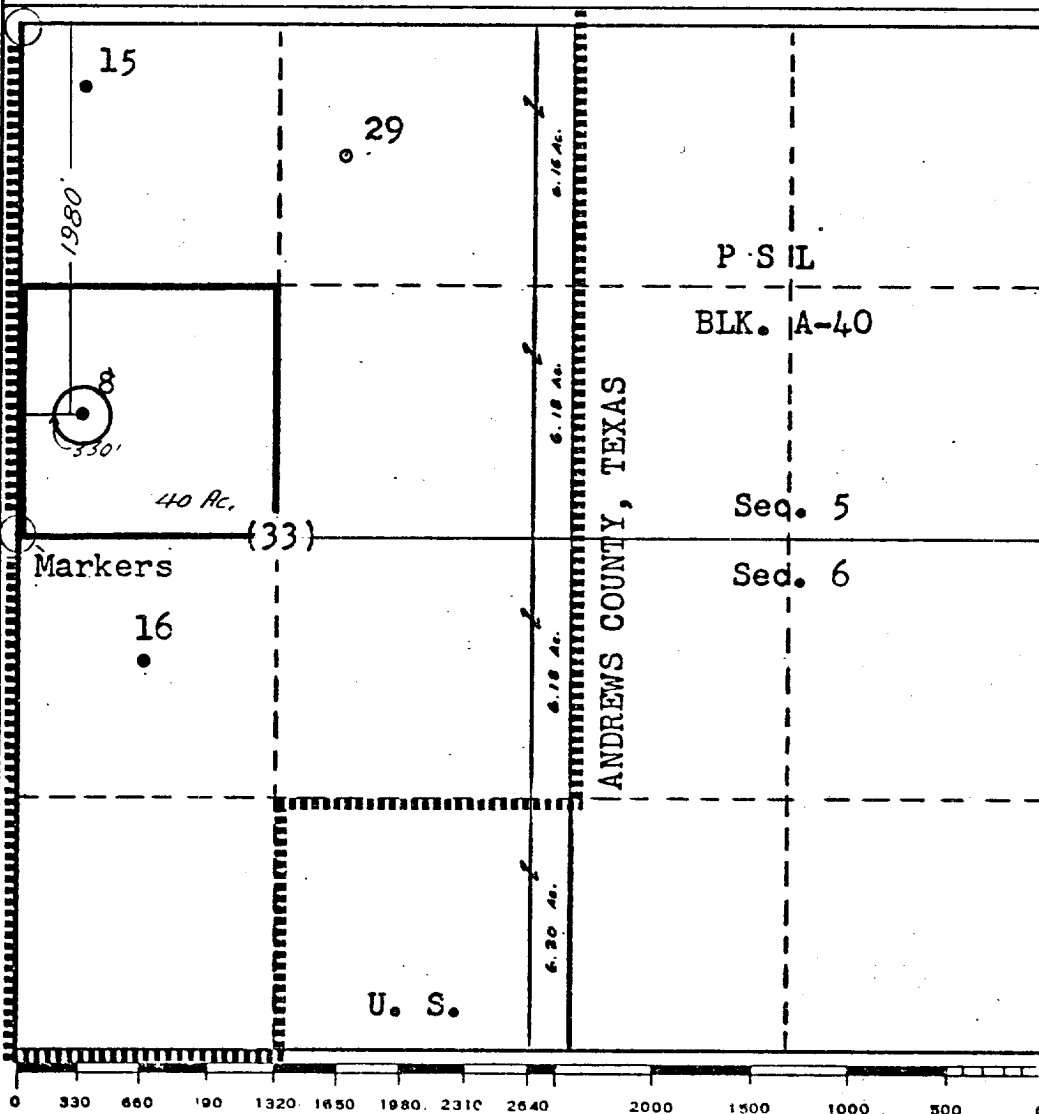
Operator <b>TEXACO Inc.</b>			Lease <b>A. H. Blinebry Fed. NCT-1</b>		Well No. <b>8</b>
Unit Letter <b>E</b>	Section <b>33</b>	Township <b>22 South</b>	Range <b>38 East</b>	County <b>Lea</b>	
Actual Footage Location of Well: <b>1980'</b> feet from the <b>North</b> line and <b>330'</b> feet from the <b>West</b> line <b>Sec. 33</b>					
Ground Level Elev. <b>3377'</b>	Producing Formation <b>Wantz Granite Wash</b>	Pool <b>Wantz Granite Wash</b>		Dedicated Acreage: <b>40</b> Acres	

1. Outline the acreage dedicated to the subject well by colored pencil or hachure marks on the plat below.
2. If more than one lease is dedicated to the well, outline each and identify the ownership thereof (both as to working interest and royalty).
3. If more than one lease of different ownership is dedicated to the well, have the interests of all owners been consolidated by communitization, unitization, force-pooling, etc?

☐ Yes    ☐ No    If answer is "yes," type of consolidation \_\_\_\_\_

If answer is "no," list the owners and tract descriptions which have actually been consolidated. (Use reverse side of this form if necessary.) \_\_\_\_\_

No allowable will be assigned to the well until all interests have been consolidated (by communitization, unitization, forced-pooling, or otherwise) or until a non-standard unit, eliminating such interests, has been approved by the Commission.



**CERTIFICATION**

I hereby certify that the information contained herein is true and complete to the best of my knowledge and belief.

*B. L. Eiland*

Name  
**B. L. Eiland**  
Position  
**Division Surveyor**

Company  
**Texaco Inc.**

Date  
**October 5, 1976**

I hereby certify that the well location shown on this plat was plotted from field notes of actual surveys made by me or under my supervision, and that the same is true and correct to the best of my knowledge and belief.

Date Surveyed  
**12/8/58**

Registered Professional Engineer  
and/or Land Surveyor,  
*B. L. Eiland*  
**B. L. Eiland**

Certificate No.  
**4386**

U. S. Geological Survey  
P. O. Box 1157  
Hobbs, New Mexico 88240

HOBBS DISTRICT

CONDITIONS OF APPROVAL:

1. The Hobbs office (telephone (505) 393-3612 is to be notified when workover operations are to be commenced.
2. Blowout prevention equipment is required.
3. N.M.O.C.C. approval is required for dual completion.