

District I  
1625 N. French Dr., Hobbs. NM 88240

State of New Mexico  
Energy, Minerals & Natural Resources Department

Revised February 21, 1994  
instructions on back

District II  
PO Drawer DD, Artesia, NM 88211-0719

OIL CONSERVATION DIVISION  
PO Box 2088  
Santa Fe, NM 87504-2088

Submit to Appropriate District Office  
State Lease - 4 Copies  
Fee Lease - 3 Copies

District III  
1000 Rio Brazos Rd. Aztec, NM 87410

District IV  
PO Box 2088, Santa Fe. NM 87504-2088

☐ AMENDED REPORT

### WELL LOCATION AND ACREAGE DEDICATION PLAT

API Number 30-025- 20245		2 Pool Code 79240		3 Pool Name Jalmat: Tan-Yates-7 rvrs (Pro Gas)	
4 Property Code 24672		5 Property Name State "A" A/C 3			6 Well Number 8
7 OGRID No. 162791		8 Operator Name Raptor Resources			9 Elevation

#### 10 Surface Location

UL or lot no.	Section	Township	Range	Lot Idn	Feet from the	North/South line	Feet from the	East/West line	County
P	10	23S	36E		660	South	660	East	Lea

#### 11 Bottom Hole Location If Different From Surface

UL or lot no.	Section	Township	Range	Lot Idn	Feet from the	North/South line	Feet from the	East/West line	County

12 Dedicated Acres 320	13 Joint or Infil	14 Consolidation Code	15 Order No.
---------------------------	-------------------	-----------------------	--------------

NO ALLOWABLE WILL BE ASSIGNED TO THIS COMPLETION UNTIL ALL INTERESTS HAVE BEEN CONSOLIDATED  
OR A NON-STANDARD UNIT HAS BEEN APPROVED BY THE DIVISION

16			<h4>17 OPERATOR CERTIFICATION</h4> <p>I hereby certify that the information contained herein is true and complete to the best of my knowledge and belief</p> <p><i>Bill R. Keathly</i> Signature Bill R. Keathly Printed Name Regulatory Agent Title 5-9-00 Date</p>	
			<h4>18 SURVEYOR CERTIFICATION</h4> <p>I hereby certify that the well location shown on this plat was plotted from field notes of actual surveys made by me or under my supervision, and that the same is true and correct to the best of my belief.</p> <p>Date of Survey Signature and Seal of Professional Surveyor:</p>	
			<p>Certificate Number</p>	

Submit to Appropriate  
District Office  
State Lease - 4 copies  
Fee Lease - 3 copies

State of New Mexico  
Energy, Minerals and Natural Resources Department

Form C-102  
Revised 1-1-89

OIL CONSERVATION DIVISION

DISTRICT I  
P.O. Box 1980, Hobbs, NM 88240

P.O. Box 2088

Santa Fe, New Mexico 87504-2088

DISTRICT II  
P.O. Drawer DD, Artesia, NM 88210

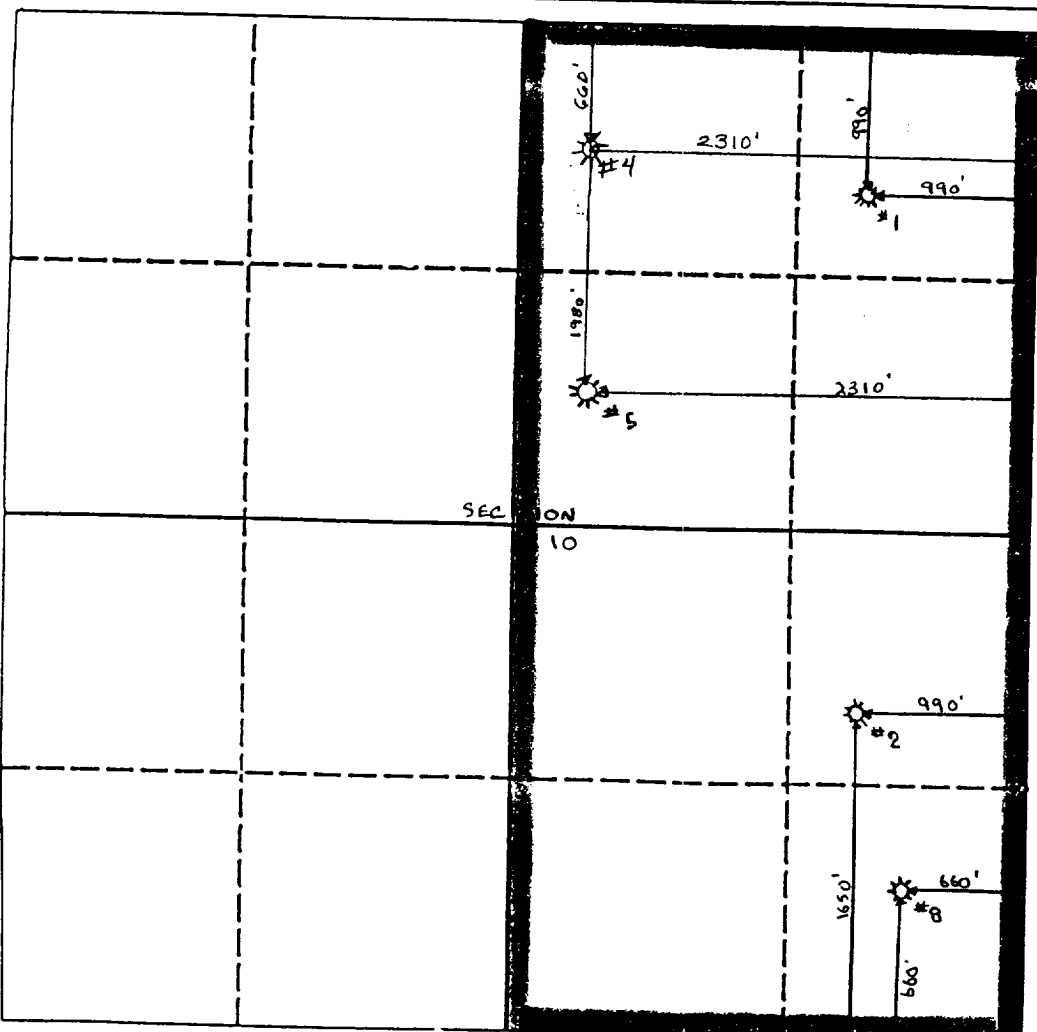
DISTRICT III  
1000 Rio Brazos Rd., Aztec, NM 87410

WELL LOCATION AND ACREAGE DEDICATION PLAT

All Distances must be from the outer boundaries of the section

Operator Hal J. Rasmussen Operating, Inc.			Lease State A A/C 3 <i>Comm</i>		Well No. 8
Unit Letter P	Section 10	Township 23 S	Range 36E	County Lea	
Actual Footage Location of Well: 660 feet from the <i>South</i> line and 660 feet from the <i>East</i> line					
Ground level Elev.		Producing Formation TANSHILL-YATES	Pool Jalmat-TNSL-YTS-7R	Dedicated Acreage: 320 Acres	

- Outline the acreage dedicated to the subject well by colored pencil or hatchure marks on the plat below.
- If more than one lease is dedicated to the well, outline each and identify the ownership thereof (both as to working interest and royalty).
- If more than one lease of different ownership is dedicated to the well, have the interest of all owners been consolidated by communitization, unitization, force-pooling, etc.?  
☐ Yes ☐ No If answer is "yes" type of consolidation \_\_\_\_\_  
If answer is "no" list the owners and tract descriptions which have actually been consolidated. (Use reverse side of this form if necessary.) \_\_\_\_\_  
No allowable will be assigned to the well until all interests have been consolidated (by communitization, unitization, forced-pooling, or otherwise) or until a non-standard unit, eliminating such interest, has been approved by the Division.



OPERATOR CERTIFICATION

I hereby certify that the information contained herein is true and complete to the best of my knowledge and belief.

Signature  
*Jay D. Cherski*  
Printed Name  
Jay D. Cherski  
Position  
Agent  
Company  
Hal J. Rasmussen Operating, Inc.  
Date  
1-24-91

SURVEYOR CERTIFICATION

I hereby certify that the well location shown on this plat was plotted from field notes of actual surveys made by me or under my supervision, and that the same is true and correct to the best of my knowledge and belief.

Date Surveyed  
Signature & Seal of Professional Surveyor  
Certificate No.

OIL CONSERVATION DIVISION

P.O. Box 2088

Santa Fe, New Mexico 87504-2088

DISTRICT I  
P.O. Box 1980, Hobbs, NM 88240

DISTRICT II  
P.O. Drawer DD, Artesia, NM 88210

DISTRICT III  
1000 Rio Brazos Rd., Aztec, NM 87410

WELL LOCATION AND ACREAGE DEDICATION PLAT

All Distances must be from the outer boundaries of the section

Operator Hal J. Rasmussen Operating, Inc.			Lease State A A/C 3 Com		Well No. 8
Unit Letter P	Section 10	Township 23 S	Range 36E	County Lea	
Actual Footage Location of Well: 660 feet from the SOUTH line and 660 feet from the WEST line					
Ground level Elev.	Producing Formation TANSHILL-YATES	Pool Jalmit-TNSL-YTS-7R	Dedicated Acreage: 320 Acres		

- Outline the acreage dedicated to the subject well by colored pencil or hatchure marks on the plat below.
- If more than one lease is dedicated to the well, outline each and identify the ownership thereof (both as to working interest and royalty).
- If more than one lease of different ownership is dedicated to the well, have the interest of all owners been consolidated by communitization, unitization, force-pooling, etc?  
☐ Yes ☐ No If answer is "yes" type of consolidation \_\_\_\_\_  
If answer is "no" list the owners and tract descriptions which have actually been consolidated. (Use reverse side of this form if necessary). \_\_\_\_\_  
No allowable will be assigned to the well until all interests have been consolidated (by communitization, unitization, forced-pooling, or otherwise) or until a non-standard unit, eliminating such interest, has been approved by the Division.

OPERATOR CERTIFICATION

I hereby certify that the information contained herein is true and complete to the best of my knowledge and belief.

Signature

Printed Name

Jay D. Cherski

Position

Agent

Company

Hal J. Rasmussen Operating, Inc.

Date

10/9/90

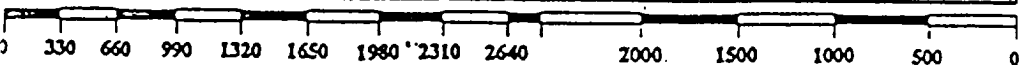
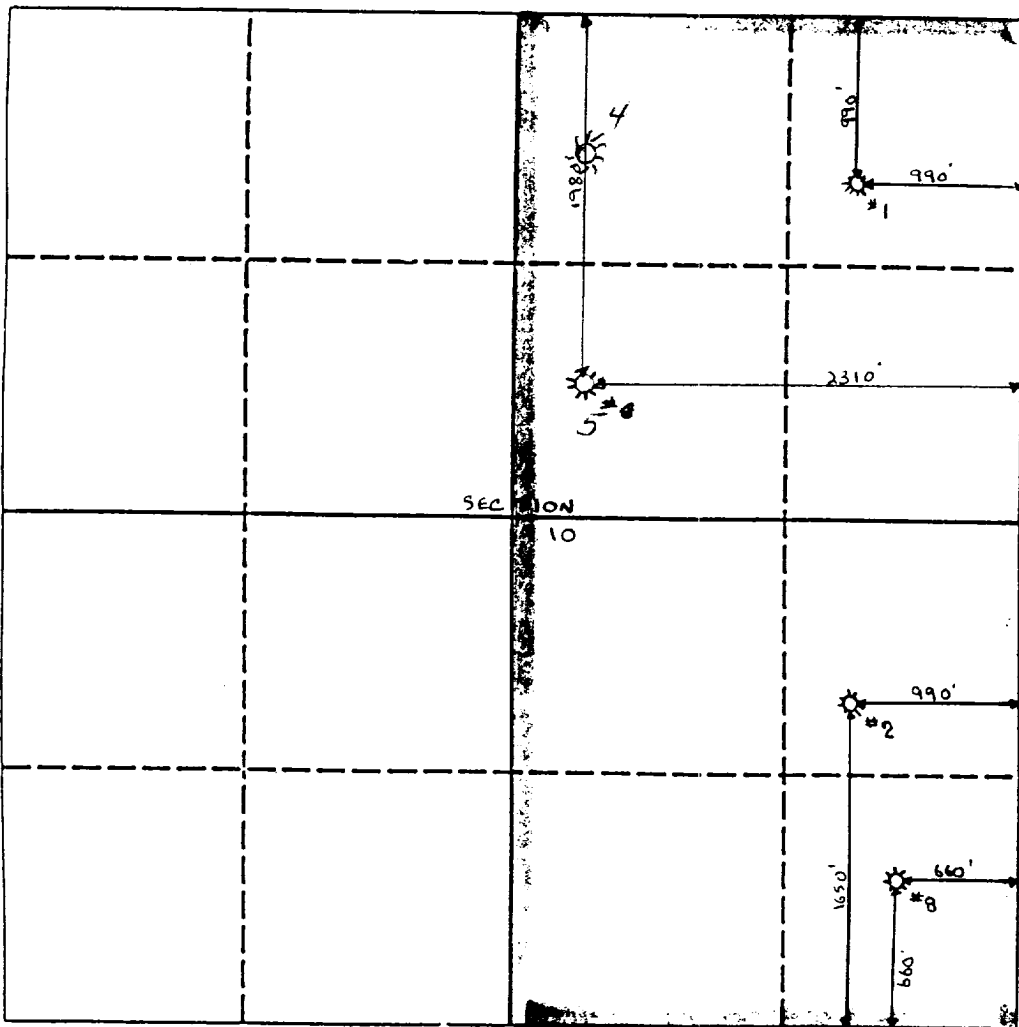
SURVEYOR CERTIFICATION

I hereby certify that the well location shown on this plat was plotted from field notes of actual surveys made by me or under my supervision, and that the same is true and correct to the best of my knowledge and belief.

Date Surveyed

Signature & Seal of  
Professional Surveyor

Certificate No.



COUNTY	LEA	FIELD	Langlie-Mattix	STATE	N.M.
OPR	TEXAS PACIFIC OIL COMPANY				MAP
8 State of New Mexico "A" (Acct. 3)					
Sec. 10, T-23-S, R-36-E					
660' fr S Line & 660' fr E Line of Sec.					
Sudded 1-29-64					
Completed 2-24-64					
		CLASS		EL 3437.8	
		FORMATION	DATUM	FORMATION	DATUM
LOGS & SX - TUBING		LOG:			
8 5/8" 327' 300		7-R 3149			
5 1/2" 3725' 350		Queen 3542			
LOGS EL GR RA IND HC A		TD 3725', PBD 3677'			

IP Queen Perfs 3610-73' Flwd 76 BOPD + 19 BW. Pot. Based on 24 hr test thru 24/64" chk., TP 225#, CP 425#, GOR 6200.

Distribution limited and publication prohibited by subscribers' agreement.  
Reproduction rights reserved by Williams & Lee Scouting Service, Inc.

CONT.	FWA Drlg. Co.	PROP DEPTH	4000'	TYPE
DATE				

F.R. 12-19-63; Oper's Elev. 3442' DF  
PD 4000' - Seven Rivers-Queen  
Contractor - FWA Drlg. Co.

1-31-64 Drlg. 810' RB  
2-10-64 TD 3725', PBD 3720', prep to rec load.  
Cored 3625-63', rec 38' dolo. & sd., w/scatt. shows.  
Cored 3663-3725', rec 62' dolo. & sd., w/scatt. shows.  
Perf @ 3673', 3679, 3683', 3688', 3693', & 3696'  
W/1 SPI  
Ac. 1000 gals.  
Frac 10,000 gals oil + 10,000# sd.

2-17-64 TD 3725', drlg. cement.  
Swbd 360 BW + 34 BO in 24 hrs (3673-96')  
Squeezed perfs 3673-96' W/200 sx.

2-24-64 TD 3725', PBD 3677', on potential.  
Perf @ 3610', 3617', 3626', 3635', 3639', 3653',  
3662' & 3673' W/1 SPI  
Ac. 1000 gals (MA)  
Frac 10,000 gals oil + 10,000# sd.

LEA COUNTY      Langlie-Mattix      N.M.      Sec. 10-23S-36E  
TEXAS PACIFIC OIL CO., #8 State of N.M. "A" (Acct. 3)  
Page #2

2-24-64    TD 3725', PBD 3677', Cont'd  
            Flwd 106 BLO + 59 BNO in 24 hrs thru 22/64"  
            chk., CP 600#, TP 375#.  
3-2-64    TD 3725', PBD 3677', COMPLETED.