

COUNTY LEA FIELD Blinebry STATE NM
 OPR SHELL OIL CO. API 30-025-20,62
 NO 9 LEASE Grizzell MAP
 Sec 8, T22S, R37E COORD
 810 FSL, 1980 FEL of Sec 5-5-41 NM
 3 mi S/Eunice Re SPD 2-15-82 Re CMP 3-25-82

SC 8 5/8-275-250 sx 4 1/2-6572-200 sx 2 3/8-6063	WELL CLASS: INIT DX FIN DO LSE CODE			
	FORMATION	DATUM	FORMATION	DATUM
TD 6575 (DRKD)			PRD 6385	

IP (Blinebry) Perfs 5428-5953 P 10 BOPD + 2 BW. Pot based
 on 24 hr test. GOR 36,000; gty 36.6

CONTR OPRSTEX 3412 DF sub-s

F.R.C. 5-29-82
 PD 6385 WO (Blinebry)
 (Orig. comp. 7-27-63 thru (Drinkard)
 Perfs 6459-6509, OTD 6575, OPB 6543)
 5-24-82 TD 6575; PBD 6385; Complete
 BP @ 6385
 Perf (Blinebry) 5428-5953 w/91 shots (overall)
 Acid (5428-5953) 34,000 gals
 5-29-82 COMPLETION ISSUED

5-5-41 NM
 IC 30-025-70457-82

WELL LOCATION AND ACREAGE DEDICATION PLAT

Supersedes C-128
Effective 1-1-65

All distances must be from the outer boundaries of the Section

Hobbs

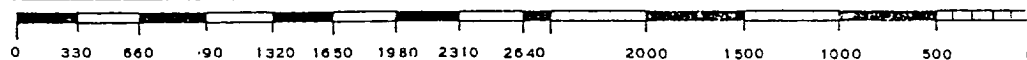
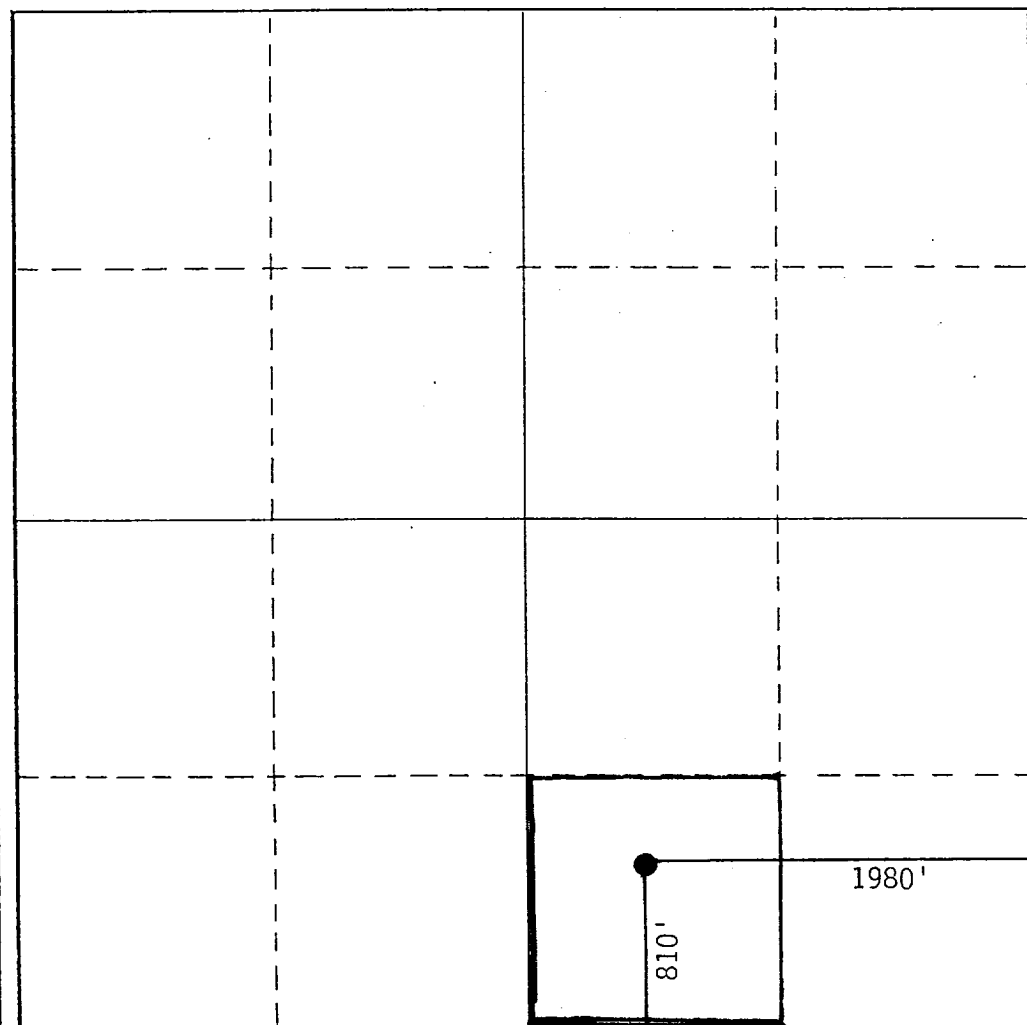
Operator SHELL WESTERN E & P INC.			Lease GRIZZELL		Well No. 9
Unit Letter 0	Section 8	Township 22-S	Range 37-E	County LEA	
Actual Footage Location of Well: 810 feet from the South line and 1980 feet from the East line					
Ground Level Elev. 3403'	Producing Formation Blinebry		Pool Blinebry Oil & Gas		Dedicated Acreage: 40 Acres

- Outline the acreage dedicated to the subject well by colored pencil or hachure marks on the plat below.
- If more than one lease is dedicated to the well, outline each and identify the ownership thereof (both as to working interest and royalty).
- If more than one lease of different ownership is dedicated to the well, have the interests of all owners been consolidated by communitization, unitization, force-pooling, etc?

☐ Yes ☐ No If answer is "yes," type of consolidation _____

If answer is "no," list the owners and tract descriptions which have actually been consolidated. (Use reverse side of this form if necessary.) _____

No allowable will be assigned to the well until all interests have been consolidated (by communitization, unitization, forced-pooling, or otherwise) or until a non-standard unit, eliminating such interests, has been approved by the Commission.



CERTIFICATION

I hereby certify that the information contained herein is true and complete to the best of my knowledge and belief.

A. J. Fore
Name

A. J. FORE

Position

SUPERVISOR REG. & PERMITTING

Company

SHELL WESTERN E&P INC.

Date

JAN 9 1989

I hereby certify that the well location shown on this plat was plotted from field notes of actual surveys made by me or under my supervision, and that the same is true and correct to the best of my knowledge and belief.

Date Surveyed

Registered Professional Engineer
and/or Land Surveyor

Certificate No.

Reclassify to oil 1-1-89

NEW MEXICO OIL CONSERVATION COMMISSION
WELL LOCATION AND ACREAGE DEDICATION PLAT

Form C-102
Supersedes C-124
Effective 1-1-55

All distances must be from the outer boundaries of the Section.

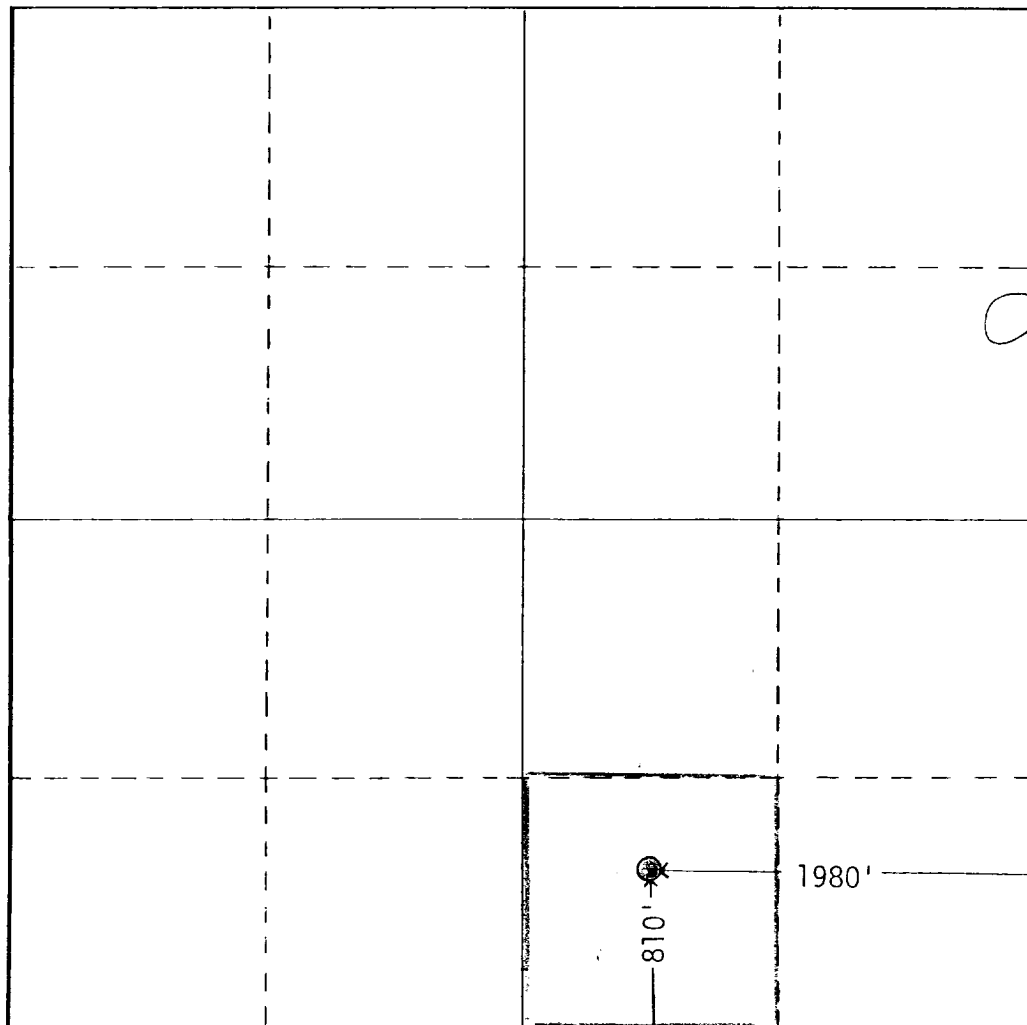
Operator SHELL OIL COMPANY			Lease GRIZZELL		Well No. 9
Unit Letter 0	Section 8	Township 22-S	Range 37-E	County LEA	
Actual Footage Location of Well: 810 feet from the SOUTH line and 1980 feet from the EAST line					
Ground Level Elev. 3403'	Producing Formation BLINEBRY		Pool BLINEBRY OIL AND GAS		Dedicated Acreage: 40 Acres

1. Outline the acreage dedicated to the subject well by colored pencil or hachure marks on the plat below.
2. If more than one lease is dedicated to the well, outline each and identify the ownership thereof (both as to working interest and royalty).
3. If more than one lease of different ownership is dedicated to the well, have the interests of all owners been consolidated by communitization, unitization, force-pooling, etc?

☐ Yes ☐ No If answer is "yes," type of consolidation _____

If answer is "no," list the owners and tract descriptions which have actually been consolidated. (Use reverse side of this form if necessary.) _____

No allowable will be assigned to the well until all interests have been consolidated (by communitization, unitization, forced-pooling, or otherwise) or until a non-standard unit, eliminating such interests, has been approved by the Commission.



CERTIFICATION

I hereby certify that the information contained herein is true and complete to the best of my knowledge and belief.

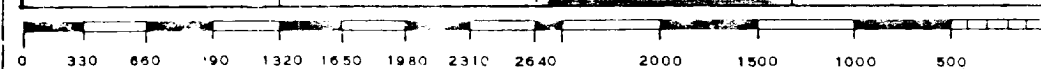
Name *A. J. FORE*
Position **SUPERVISOR REG. & PERMITS**
Company **SHELL OIL COMPANY**
Date **FEBRUARY 22, 1983**

I hereby certify that the well location shown on this plat was plotted from field notes of actual surveys made by me or under my supervision, and that the same is true and correct to the best of my knowledge and belief.

Date Surveyed

Registered Professional Engineer and/or Land Surveyor

Certificate No.



**NEW MEXICO OIL CONSERVATION COMMISSION
WELL LOCATION AND ACREAGE DEDICATION PLAT**

Form C-102
Supersedes C-128
Effective 1-1-65

All distances must be from the outer boundaries of the Section.

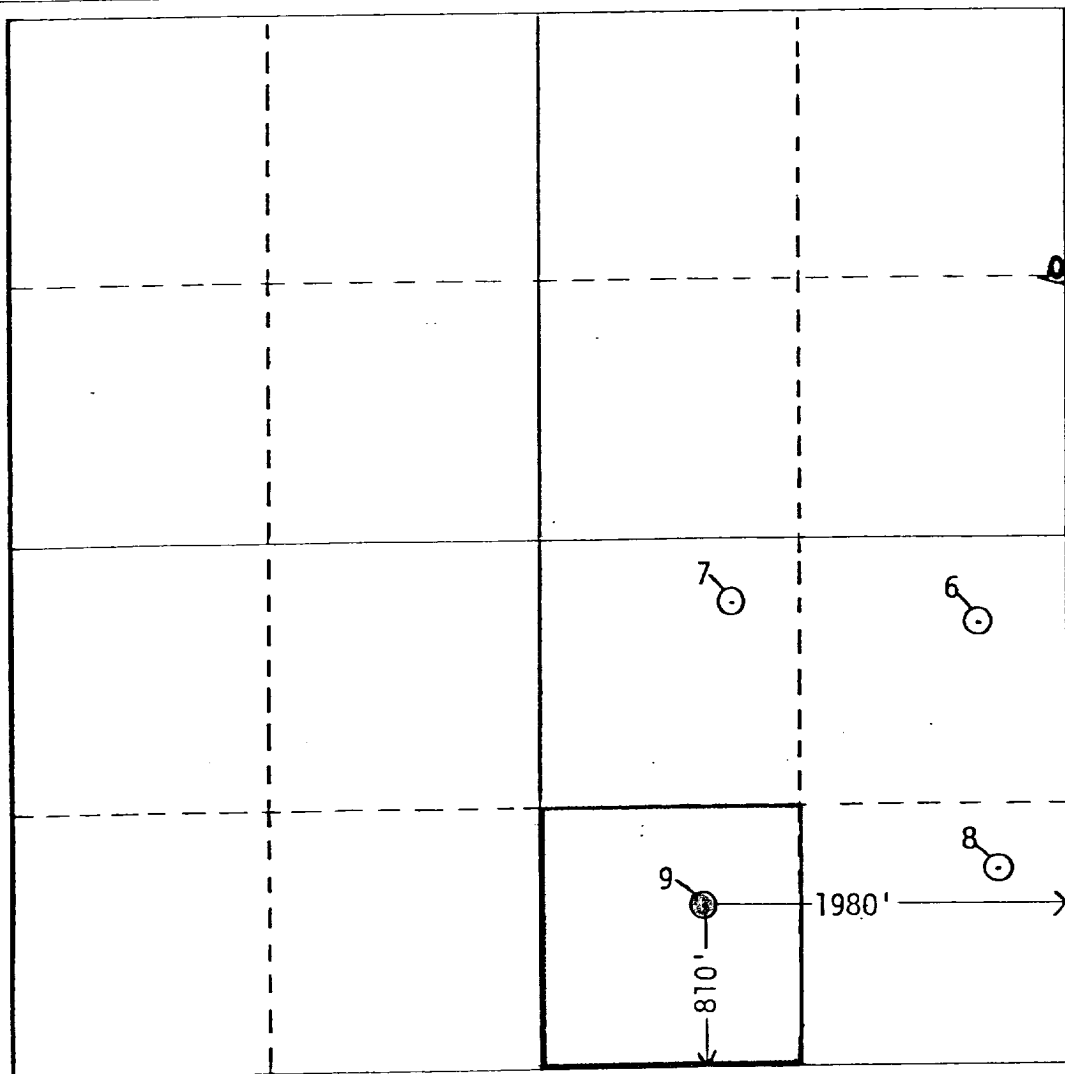
Operator SHELL OIL COMPANY			Lease GRIZZELL		Well No. 9
Unit Letter 0	Section 8	Township 22-S	Range 37-E	County LEA	
Actual Footage Location of Well: <div style="display: flex; justify-content: space-between;"> 810 feet from the SOUTH line and 1980 feet from the EAST line </div>					
Ground Level Elev. 3403'	Producing Formation BLINEBRY	Pool BLINEBRY OIL AND GAS		Dedicated Acreage: 40 Acres	

1. Outline the acreage dedicated to the subject well by colored pencil or hachure marks on the plat below.
2. If more than one lease is dedicated to the well, outline each and identify the ownership thereof (both as to working interest and royalty).
3. If more than one lease of different ownership is dedicated to the well, have the interests of all owners been consolidated by communitization, unitization, force-pooling, etc?

☐ Yes ☐ No If answer is "yes," type of consolidation _____

If answer is "no," list the owners and tract descriptions which have actually been consolidated. (Use reverse side of this form if necessary.) _____

No allowable will be assigned to the well until all interests have been consolidated (by communitization, unitization, forced-pooling, or otherwise) or until a non-standard unit, eliminating such interests, has been approved by the Commission.



CERTIFICATION

I hereby certify that the information contained herein is true and complete to the best of my knowledge and belief.

Original Signed by **A. J. FORE** **A. J. FORE**
 Position **SUPERVISOR**
REGULATORY AND PERMITTING
 Company **SHELL OIL COMPANY**
 Date **APRIL 23, 1982**

I hereby certify that the well location shown on this plat was plotted from field notes of actual surveys made by me or under my supervision, and that the same is true and correct to the best of my knowledge and belief.

Date Surveyed _____

Registered Professional Engineer
and/or Land Surveyor

Certificate No. _____

COUNTY	Lea	FIELD	Drinkard	STATE	N.M.	NO.	
OPR.	Shell Oil Company			MAP			
NO.	9	LSE	Grizzell				
SEC.	8	T.	22S	BLK. R	37E	SUR.	CO-ORD.
LOC.	810' fr S Line & 1980' fr E Line of Sec.						
MI.	FROM		CLASS.	EL. 3412' 8			
SPUD.	6-18-63	COMP.	7-27-63	FORMATION	DATUM	FORMATION	DATUM
IRT.	A 3000			LOG:			
	SOF 20,000			Glorieta	5070'		
CSG. & SX.	8 5/8"	275'	250	Paddock	5162'		
	4 1/2"	6572'	200	Blinebry	5523'		
				Tubb	6056'		
				Drinkard	6347'		
TBG.	DEPTH	SIZE					
LOGS	EL	GR	RA	IND	HC	A	
				TD 6575'		PB 6543'	
PROD INT.	(DAILY RATE)	BS&W	GH	GOR	GTY	C. P.	T. P.
6459-6509'	Flo. 78	B0 + 7 BW	24/64"	5400	36.2	390	125
(Drinkard)							24'

Distribution limited and publication prohibited by subscribers' agreement.
Reproduction rights reserved by Williams & Lee Scouting Service, Inc.

CONT.	PROP DEPTH	6550'	TYPE
DATE			

F.R. 6-13-63, Drinkard; Opr's Elev. 3412' DF
PD 6550'

6-24-63 Drlg. 3543' dolo & anhy

7-1-63 Drlg. 5045' dolo

7-8-63 Drlg. 6423' ls

7-15-63 TD 6575'; PB 6543'; MO Rotary
Cored 6430-80', rec 50' being:
11½' dolo, fair fluor & stain, bldg oil & gas
38½' dolo W/anhy nodules, NS
Cored 6480-6519', rec 39' being:
5' dolo W/good show
13' dolo, poor show
21' dolo, silty, NS

7-15-63 Continued
 Cored 6519-43', rec 24' being:
 2' dolo, poor show
 8' anhy
 14' dolo, NS
7-22-63 TD 6575'; PB 6543'; Prep to test
 Perf 1 shot @ 6459', 6462', 6467', 6470',
 6473', 6476', 6477', 6479', 6481', 6485',
 6487', 6490', 6491', 6509'
 Tr. W/3000 Ac
 Flwd 23 BLO + 13 BNO + 2 BAW in 4 hrs 30 min
 & diec
 SOF 20,000 gals
7-29-63 TD 6575'; PB 6543'; COMPLETED
8-1-63 COMPLETION REPORTED