

NE MEXICO OIL CONSERVATION COMMISSION  
WELL LOCATION AND ACREAGE DEDICATION PLAT

Form C-103  
Supersedes C-12.  
Effective 1-1-65

All distances must be from the outer boundaries of the Section.

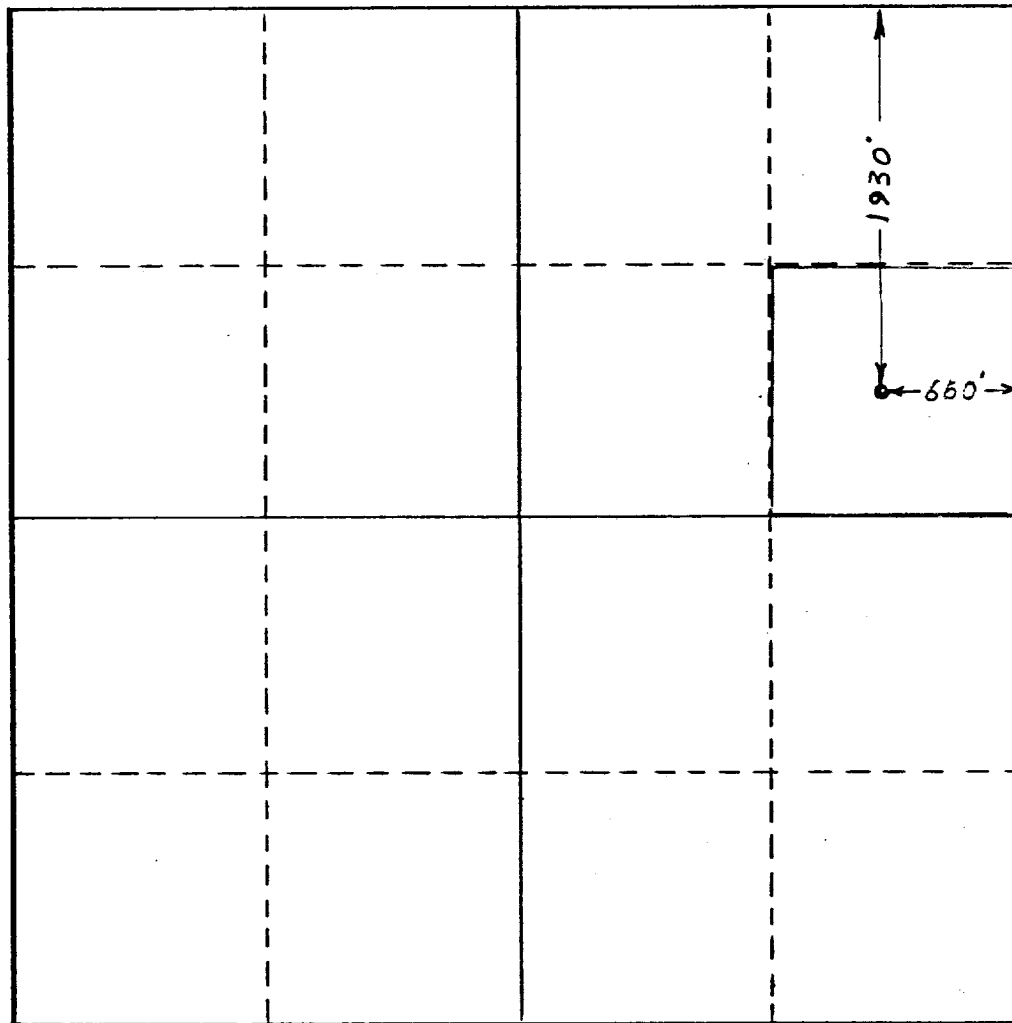
Operator Phillips Petroleum Company		Lease New Mex "D"		Well No. 821 144 167	
Unit Letter H	Section 36	Township 22S	Range 37E	County Lea	
Actual Footage Location of Well: 1930 feet from the north line and 660 feet from the east line					
Ground Level Elev. 3307'	Producing Formation Blinebry	Pool Blinebry Gas		Dedicated Acreage: 40 Acres	

1. Outline the acreage dedicated to the subject well by colored pencil or hachure marks on the plat below.
2. If more than one lease is dedicated to the well, outline each and identify the ownership thereof (both as to working interest and royalty).
3. If more than one lease of different ownership is dedicated to the well, have the interests of all owners been consolidated by communitization, unitization, force-pooling, etc?

☐ Yes ☐ No If answer is "yes," type of consolidation \_\_\_\_\_

If answer is "no," list the owners and tract descriptions which have actually been consolidated. (Use reverse side of this form if necessary.) \_\_\_\_\_

No allowable will be assigned to the well until all interests have been consolidated (by communitization, unitization, forced-pooling, or otherwise) or until a non-standard unit, eliminating such interests, has been approved by the Commission.



CERTIFICATION

I hereby certify that the information contained herein is true and complete to the best of my knowledge and belief.

Name [Signature]  
Position  
Assoc. Reservoir Engineer  
Company  
Phillips Petroleum Company

Date  
July 21, 1967

I hereby certify that the well location shown on this plat was plotted from field notes of actual surveys made by me or under my supervision, and that the same is true and correct to the best of my knowledge and belief.

Date Surveyed  
March 30, 1964  
Registered Professional Engineer  
and/or Land Surveyor

[Signature]  
Certificate No.

4357

**NEW MEXICO OIL CONSERVATION COMMISSION  
WELL LOCATION AND ACREAGE DEDICATION PLAT**

Form C-102  
Supersedes C-128  
Effective 1-1-65

All distances must be from the outer boundaries of the Section.

Operator <b>Phillips Petroleum Company</b>			Lease <b>New Mex "D"</b>		Well No. <b>1</b>
Unit Letter <b>H</b>	Section <b>36</b>	Township <b>22-S</b>	Range <b>37-E</b>	County <b>Lea</b>	
Actual Footage Location of Well: <b>1930</b> feet from the <b>North</b> line and <b>660</b> feet from the <b>East</b> line					
Ground Level Elev. <b>3307'</b>	Producing Formation <b>Blinbry</b>		Pool <b>Blinbry--Oil</b>		Dedicated Acreage: <b>40</b> Acres

1. Outline the acreage dedicated to the subject well by colored pencil or hachure marks on the plat below.
2. If more than one lease is dedicated to the well, outline each and identify the ownership thereof (both as to working interest and royalty).
3. If more than one lease of different ownership is dedicated to the well, have the interests of all owners been consolidated by communitization, unitization, force-pooling, etc?

☐ Yes ☒ No If answer is "yes," type of consolidation \_\_\_\_\_

If answer is "no," list the owners and tract descriptions which have actually been consolidated. (Use reverse side of this form if necessary.) \_\_\_\_\_

No allowable will be assigned to the well until all interests have been consolidated (by communitization, unitization, forced-pooling, or otherwise) or until a non-standard unit, eliminating such interests, has been approved by the Commission.

D	C	B	A
E	F	G	H
L	K	J	I
M	N	O	P

**CERTIFICATION**

I hereby certify that the information contained herein is true and complete to the best of my knowledge and belief.

*W. J. Mueller*  
**W. J. Mueller**

Name  
**Associate Reservoir Engr.**

Position

Company  
**Phillips Petroleum Company**

Date  
**November 9, 1967**

I hereby certify that the well location shown on this plat was plotted from field notes of actual surveys made by me or under my supervision, and that the same is true and correct to the best of my knowledge and belief.

**March 30, 1964**

Date Surveyed

Registered Professional Engineer and/or Land Surveyor

*W. E. Spry*  
Certificate No.

**679**

