

**District I**  
1625 N. French Dr., Hobbs. NM 88240

**District II**  
PO Drawer DD, Artesia, NM 88211-0719

**District III**  
1000 Rio Brazos Rd. Aztec, NM 87410

**District IV**  
**PO Box 2088, Santa Fe. NM 87504-2088**

**State of New Mexico**  
**Energy, Minerals & Natural Resources Department**

# OIL CONSERVATION DIVISION

**PO Box 2088  
Santa Fe, NM 87504-2088**

**Revised February 21, 1994**

**instructions on back**

**Submit to Appropriate District Office**

**State Lease - 4 Copies**

**Fee Lease - 3 Copies**

☐ AMENDED REPORT

# WELL LOCATION AND ACREAGE DEDICATION PLAT

API Number 30-025-20973	2 Pool Code 79240	3 Pool Name Jalmat: Tan-Yates-7 rvrs (Pro Gas)
4 Property Code 24669	5 Property Name State "A" A/C 1	6 Well Number 105
7 OGRID No. 162791	8 Operator Name Raptor Resources	9 Elevation

## 10 Surface Location

UL or lot no.	Section	Township	Range	Lot Idn	Feet from the	North/South line	Feet from the	East/West line	County
H	23	23S	36E		2080	North	660	East	Lea

### 11 Bottom Hole Location If Different From Surface

UL or lot no.	Section	Township	Range	Lot 1dn	Feet from the	North/South line	Feet from the	East/West line	County
---------------	---------	----------	-------	---------	---------------	------------------	---------------	----------------	--------

12 Dedicated Acres 320	13 Joint or Infill	14 Consolidation Code	15 Order No. NSL-3023-A (SD)
---------------------------	--------------------	-----------------------	---------------------------------

**NO ALLOWABLE WILL BE ASSIGNED TO THIS COMPLETION UNTIL ALL INTERESTS HAVE BEEN CONSOLIDATED  
OR A NON-STANDARD UNIT HAS BEEN APPROVED BY THE DIVISION**

	<h2 style="text-align: center; margin: 0;">17 OPERATOR CERTIFICATION</h2> <p>I hereby certify that the information contained herein is true and complete to the best of my knowledge and belief.</p>  <div style="margin-bottom: 10px;"> <i>Bill R. Keathly</i>              Signature         </div> <div style="margin-bottom: 10px;">             Bill R. Keathly              Printed Name         </div> <div style="margin-bottom: 10px;">             Regulatory Agent              Title         </div> <div style="margin-bottom: 10px;">             4-11-00              Date         </div>
	<h2 style="text-align: center; margin: 0;">18 SURVEYOR CERTIFICATION</h2> <p>I hereby certify that the well location shown on this plat was plotted from field notes of actual surveys made by me or under my supervision, and that the same is true and correct to the best of my belief.</p>  <div style="margin-bottom: 10px;">             Date of Survey         </div> <div style="margin-bottom: 10px;">             Signature and Seal of Professional Surveyor:         </div>
	Certificate Number

Submit to Appropriate  
District Office  
State Lease - 4 copies  
Fee Lease - 3 copies

State of New Mexico  
Energy, Minerals and Natural Resources Department

Form C-102  
Revised 1-1-89

OIL CONSERVATION DIVISION

P.O. Box 2088  
Santa Fe, New Mexico 87504-2088

DISTRICT I  
P.O. Box 1980, Hobbs, NM 88240

DISTRICT II  
P.O. Drawer DD, Artesia, NM 88210

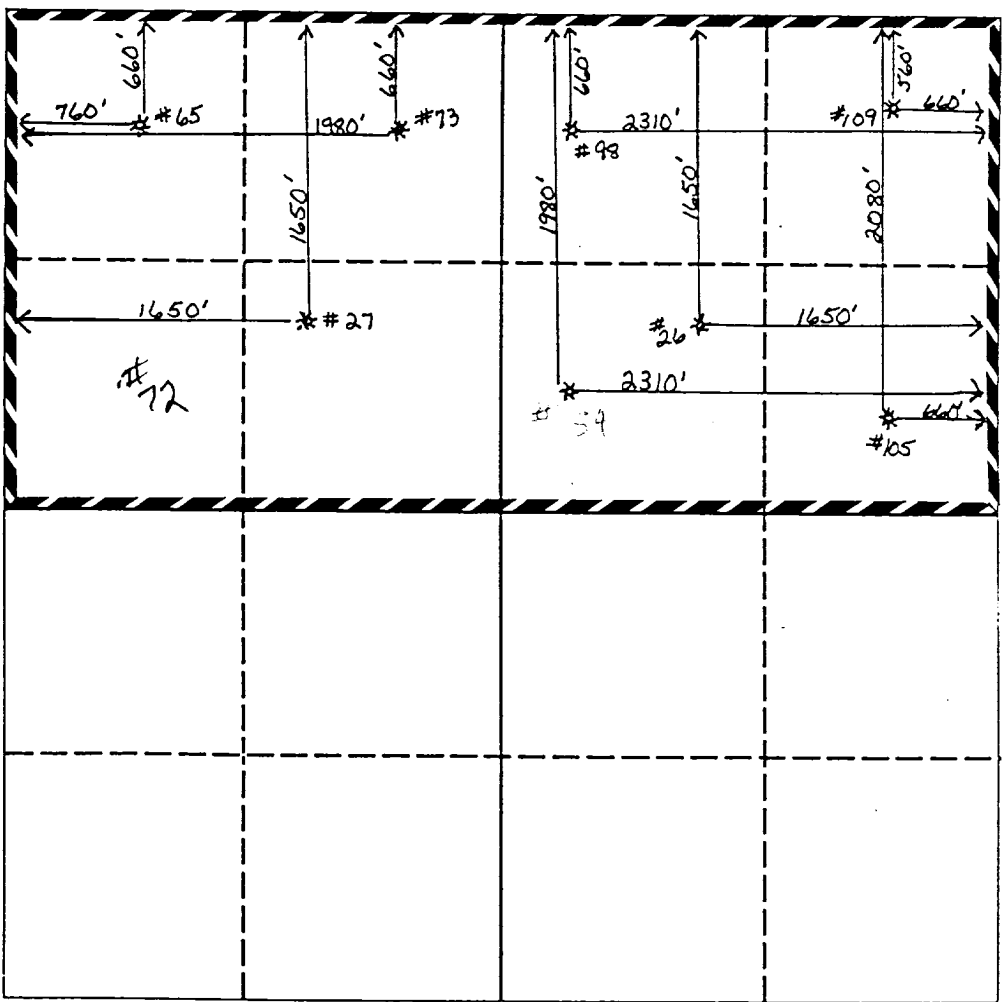
DISTRICT III  
1000 Rio Brazos Rd., Aztec, NM 87410

WELL LOCATION AND ACREAGE DEDICATION PLAT

All Distances must be from the outer boundaries of the section

Operator Clayton Williams Energy, Inc.		Lease State A A/C 1		Well No. 105
Unit Letter H	Section 23	Township 23S	Range 36E	County NMPM
Actual Footage Location of Well: 2080 feet from the North line and 660 feet from the East line				
Ground level Elev. N/A	Producing Formation Yates	Pool Jalmat Tansill Yates 7 Rivers	Dedicated Acreage: 320 Acres	

1. Outline the acreage dedicated to the subject well by colored pencil or hatchure marks on the plat below.
2. If more than one lease is dedicated to the well, outline each and identify the ownership thereof (both as to working interest and royalty).
3. If more than one lease of different ownership is dedicated to the well, have the interest of all owners been consolidated by communitization, unitization, force-pooling, etc.?  
☐ Yes ☐ No If answer is "yes" type of consolidation \_\_\_\_\_  
If answer is "no" list the owners and tract descriptions which have actually been consolidated. (Use reverse side of this form if necessary. \_\_\_\_\_  
No allowable will be assigned to the well until all interests have been consolidated (by communitization, unitization, forced-pooling, or otherwise) or until a non-standard unit, eliminating such interest, has been approved by the Division.



OPERATOR CERTIFICATION

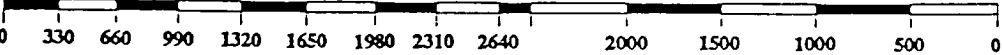
I hereby certify that the information contained herein is true and complete to the best of my knowledge and belief.

Signature <i>Robin S. McCarley</i>
Printed Name Robin S. McCarley
Position Production Analyst
Company Clayton Williams Energy, Inc.
Date 09/09/93

SURVEYOR CERTIFICATION

I hereby certify that the well location shown on this plat was plotted from field notes of actual surveys made by me or under my supervision, and that the same is true and correct to the best of my knowledge and belief.

Date Surveyed
Signature & Seal of Professional Surveyor
Certificate No.



1151-3023 (SD)

RECEIVED

SEP 11 1964

GOVERNMENT  
OFFICE

Submit to Appropriate  
District Office  
State Lease - 4 copies  
Fee Lease - 3 copies

State of New Mexico  
Energy, Minerals and Natural Resources Department

Form C-102  
Revised 1-1-89

OIL CONSERVATION DIVISION

DISTRICT I  
P.O. Box 1980, Hobbs, NM 88240

P.O. Box 2088  
Santa Fe, New Mexico 87504-2088

DISTRICT II  
P.O. Drawer DD, Artesia, NM 88210

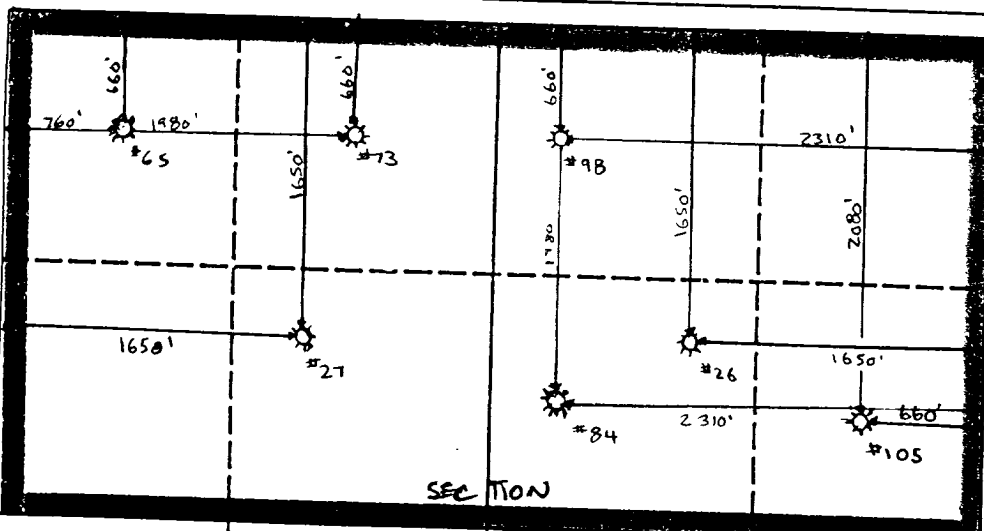
DISTRICT III  
1000 Rio Brazos Rd., Aztec, NM 87410

WELL LOCATION AND ACREAGE DEDICATION PLAT

All Distances must be from the outer boundaries of the section

Operator Hal J. Rasmussen Operating, Inc.			Lease State A A/C 1		Well No. 105
Unit Letter H	Section 23	Township 22 S	Range 36 E	County Lea	
Actual Footage Location of Well: 2080 feet from the North line and 660 feet from the East line					
Ground level Elev. Yates		Producing Formation Jalmat-TNSL-YTS-7R		Dedicated Acreage: 320 Acres	

- Outline the acreage dedicated to the subject well by colored pencil or hatchure marks on the plat below.
- If more than one lease is dedicated to the well, outline each and identify the ownership thereof (both as to working interest and royalty).
- If more than one lease of different ownership is dedicated to the well, have the interest of all owners been consolidated by communitization, unitization, force-pooling, etc?  
☐ Yes ☐ No If answer is "yes" type of consolidation \_\_\_\_\_  
If answer is "no" list the owners and tract descriptions which have actually been consolidated. (Use reverse side of this form if necessary.)  
No allowable will be assigned to the well until all interests have been consolidated (by communitization, unitization, forced-pooling, or otherwise) or until a non-standard unit, eliminating such interest, has been approved by the Division.



OPERATOR CERTIFICATION

I hereby certify that the information contained herein is true and complete to the best of my knowledge and belief.

Signature  
Printed Name  
Jay D. Cherski  
Position  
Agent  
Company  
Hal J. Rasmussen Operating, Inc.  
Date  
1/23/91

SURVEYOR CERTIFICATION

I hereby certify that the well location shown on this plat was plotted from field notes of actual surveys made by me or under my supervision, and that the same is true and correct to the best of my knowledge and belief.

Date Surveyed  
Signature & Seal of  
Professional Surveyor

Certificate No.

330 660 990 1320 1650 1980 2310 2640 2000 1500 1000 500 0

Submit to Appropriate  
District Office  
State Lease - 4 copies  
Fee Lease - 3 copies

State of New Mexico  
Energy, Minerals and Natural Resources Department

Form C-102  
Revised 1-1-89

DISTRICT I  
P.O. Box 1980, Hobbs, NM 88240

DISTRICT II  
P.O. Drawer DD, Artesia, NM 88210

DISTRICT III  
1000 Rio Brazos Rd., Aztec, NM 87410

OIL CONSERVATION DIVISION

P.O. Box 2088  
Santa Fe, New Mexico 87504-2088

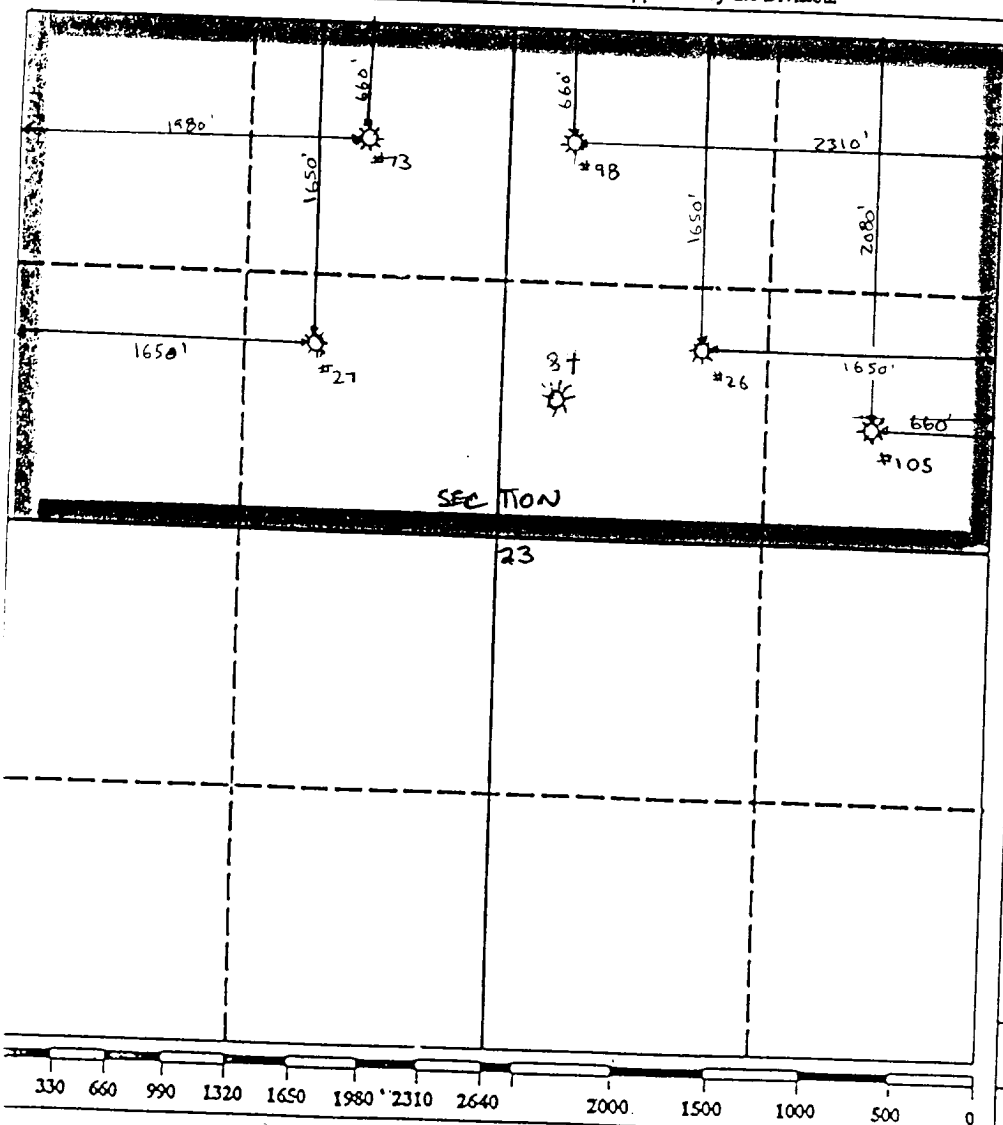
WELL LOCATION AND ACREAGE DEDICATION PLAT

All Distances must be from the outer boundaries of the section

Operator Hal J. Rasmussen Operating, Inc.			Lease State A A/C 1		Well No. 105
Unit Letter 14	Section 23	Township 22 S	Range 36 E	County Lea	

Actual Footage Location of Well: 2080 feet from the NORTH line and 660 feet from the EAST line		Dedicated Acreage: 320 Acres
Ground level Elev. YATES	Producing Formation Jalmat-TNSL-YTS-7R	

- Outline the acreage dedicated to the subject well by colored pencil or hatchure marks on the plat below.
- If more than one lease is dedicated to the well, outline each and identify the ownership thereof (both as to working interest and royalty).
- If more than one lease of different ownership is dedicated to the well, have the interest of all owners been consolidated by communitization, unitization, force-pooling, etc?  
☐ Yes ☐ No If answer is "yes" type of consolidation \_\_\_\_\_  
If answer is "no" list the owners and tract descriptions which have actually been consolidated. (Use reverse side of this form if necessary.)  
No allowable will be assigned to the well until all interests have been consolidated (by communitization, unitization, forced-pooling, or otherwise) or until a non-standard unit, eliminating such interest, has been approved by the Division.



OPERATOR CERTIFICATION

I hereby certify that the information contained herein is true and complete to the best of my knowledge and belief.

Signature

Printed Name

Jay D. Cherski

Position

Agent

Company

Hal J. Rasmussen Operating, Inc.

Date

8/26/90

SURVEYOR CERTIFICATION

I hereby certify that the well location shown on this plat was plotted from field notes of actual surveys made by me or under my supervision, and that the same is true and correct to the best of my knowledge and belief.

Date Surveyed

Signature & Seal of  
Professional Surveyor

Certificate No.



GARREY CARRUTHERS  
GOVERNOR

STATE OF NEW MEXICO  
ENERGY, MINERALS AND NATURAL RESOURCES DEPARTMENT  
OIL CONSERVATION DIVISION  
HOBBS DISTRICT OFFICE

August 24, 1990

POST OFFICE BOX 1980  
HOBBS, NEW MEXICO 88241-1980  
(505) 393-6161

Hal J. Rasmussen Operating Inc.  
Six Desta Drive, Suite 2700  
Midland, TX 79705

Attn: Jay Cherski

Re: State A A/c-1 Well #73-C  
Jalmat T-Y-SR Pool

Gentlemen:

Due to the recently submitted gas/oil ratio test the above- referenced well will be reclassified from an oil well to a gas well in the Jalmat Pool effective September 1, 1990.

The reclassification of this well as a gas well will eliminate the need to have the 320-acre proration unit (N/2 Sec. 23) approved by R-9073 reduced.

Please file a revised plat for all wells on this proration unit, showing (#26-G, #27-F, #98-B, 105-H and #73-C) Also, this well will need to be reported in the Jalmat gas section on future C-115 reports.

If you have any questions, please call Evelyn Downs at (505) 393-6161.

Very truly yours,

OIL CONSERVATION DIVISION

Jerry Sexton  
Supervisor, District I

ed

Submit to Appropriate  
District Office  
State Lease - 4 copies  
Fee Lease - 3 copies

State of New Mexico  
Energy, Minerals and Natural Resources Department

Form C-102  
Revised 1-1-89

OIL CONSERVATION DIVISION

P.O. Box 2088  
Santa Fe, New Mexico 87504-2088

DISTRICT I  
P.O. Box 1980, Hobbs, NM 88240

DISTRICT II  
P.O. Drawer DD, Artesia, NM 88210

DISTRICT III  
1000 Rio Brazos Rd., Aztec, NM 87410

WELL LOCATION AND ACREAGE DEDICATION PLAT

All Distances must be from the outer boundaries of the section

Operator Hal J. Rasmussen Operating, Inc.			Lease State A A/C 1		Well No. 105
Unit Letter H	Section 23	Township 23 <del>22</del> S	Range 36 E	County Lea	
Actual Footage Location of Well: 2080 feet from the NORTH line and 660 feet from the EAST line					
Ground level Elev.		Producing Formation TANSHILL-YATES	Pool Jalmat-TNSL-YTS-7R	Dedicated Acreage: 320 Acres	

1. Outline the acreage dedicated to the subject well by colored pencil or hatchure marks on the plat below.

2. If more than one lease is dedicated to the well, outline each and identify the ownership thereof (both as to working interest and royalty).

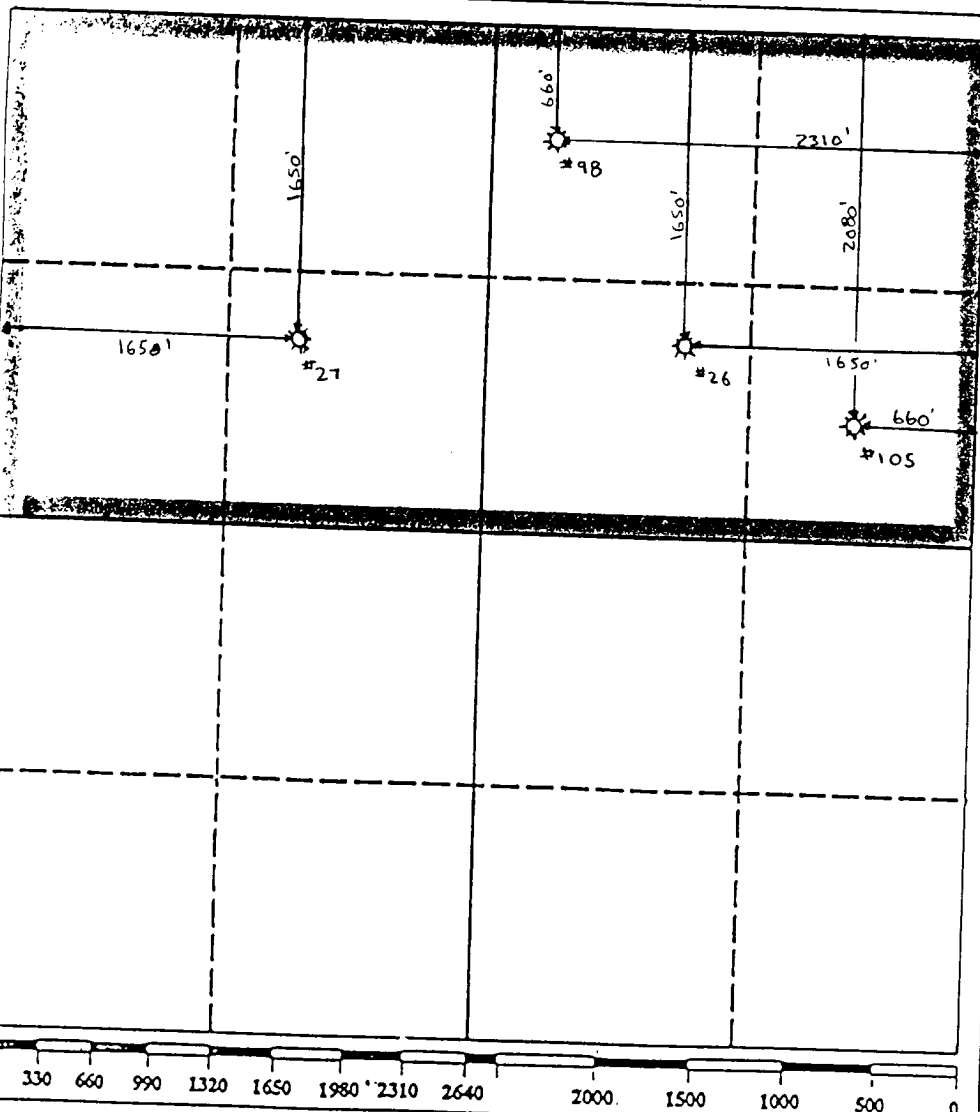
3. If more than one lease of different ownership is dedicated to the well, have the interest of all owners been consolidated by communitization, unitization, force-pooling, etc.?

☐ Yes ☐ No

If answer is "yes" type of consolidation

If answer is "no" list the owners and tract descriptions which have actually been consolidated. (Use reverse side of this form if necessary.)

No allowable will be assigned to the well until all interests have been consolidated (by communitization, unitization, forced-pooling, or otherwise) or until a non-standard unit, eliminating such interest, has been approved by the Division.



OPERATOR CERTIFICATION

I hereby certify that the information contained herein is true and complete to the best of my knowledge and belief.

Signature

Printed Name

Jay D. Cherski

Position

Agent

Company

Hal J. Rasmussen Operating, Inc.

Date

11/31/90

SURVEYOR CERTIFICATION

I hereby certify that the well location shown on this plat was plotted from field notes of actual surveys made by me or under my supervision, and that the same is true and correct to the best of my knowledge and belief.

Date Surveyed

Signature & Seal of  
Professional Surveyor

Certificate No.

## OIL CONSERVATION DIVISION

STATE OF NEW MEXICO

P. O. BOX 2038

Form C-102  
Revised 10-1-7

OIL AND MINERALS DEPARTMENT

SANTA FE, NEW MEXICO 875

All distances must be from the outer boundaries of the Section.

Operator Texas Pacific Oil Company, Inc.			Lease State A A/c-1		Well No. 105
Unit Letter H	Section 23	Township T-23-S	Range 36-E	County Lea	
Actual Footage Location of Well:					
2080	feet from the North	line and	660	feet from the East	line
Ground Level Elev. 3356	Producing Formation Jalmat Tansill Yates 7 PVS		Pool Jalmat Gas	Dedicated Acreage: 320 Acres	

1. Outline the acreage dedicated to the subject well by colored pencil or hatchure marks on the plat below.
2. If more than one lease is dedicated to the well, outline each and identify the ownership thereof (both as to working interest and royalty).
3. If more than one lease of different ownership is dedicated to the well, have the interests of all owners been consolidated by communization, unitization, force-pooling, etc?

☐ Yes ☒ No If answer is "yes," type of consolidation \_\_\_\_\_

If answer is "no," list the owners and tract descriptions which have actually been consolidated. (Use reverse side of this form if necessary.) \_\_\_\_\_

No allowable will be assigned to the well until all interests have been consolidated (by communization, unitization, forced-pooling, or otherwise) or until a non-standard unit, eliminating such interests, has been approved by the Division

	0 27	0 26	0 105

## CERTIFICATION

I hereby certify that the information contained herein is true and complete to the best of my knowledge and belief.

David Keneipp 17  
Name

David Keneipp  
Position

Reg. Adm. Supv.  
Company

Texas Pacific Oil Co., Inc

Date

5/29/80

I hereby certify that the well location shown on this plat was plotted from field notes of actual surveys made by me or under my supervision, and that the same is true and correct to the best of my knowledge and belief.

Line Surveyed

Registered Professional Engineer  
and/or Land Surveyor

Certificate No.

0 330 660 990 1320 1650 1980 2310 2640 2970 3300 3630 3960 4290 4620 4950 5280 5610 5940 6270 6600 6930 7260 7590 7920 8250 8580 8910 9240 9570 9900



COUNTY	LEA	FIELD	Langlie-Mattix	STATE	N.M.
OPR	TEXAS PACIFIC OIL COMPANY				MAP
105 State of New Mexico "A" (Acct. 1)					
Sec. 23, T-23-S, R-36-E				CO-ORD	
2080' fr N Line & 660' fr E Line of Sec.					
Spud 6-28-64		CLASS		EL 3365'	
Comp 7-13-64		FORMATION	DATUM	FORMATION	DATUM
CSG & SX - TUBING		LOG:			
		Anhy 1183			
		Yates 2860			
		7-R 3074			
		Queen 3408			
		Graybg 3590			
LOGS EL GR RA IND HC A					
TD 3669', PBD 3659'					

IP Grayburg Perfs 3646-50' Flwd 144 BOPD + 47 BW. Pot. Based on 24 hr test thru 24/64" chk., TP 75#, CP Pkr, Gravity 30.2, GOF 1063.

Distribution limited and publication prohibited by subscribers' agreement.  
Reproduction rights reserved by Williams & Lee Scouting Service, Inc.

CONT.	PROP DEPTH	3700'	TYPE
DATE			

F.R. 6-25-64; Oper's Elev. 3365' Df  
PD 3700' Queen

6-29-64 AMENDED FOOTAGE: Was 1980' FNL & 660' FEL of Sec.  
TD 323', WOC.

7-6-64 Coring @ 3649'.  
Cored 3508-57', rec 49' dolo. & sd., w/scatt.  
shows.  
Cored 3557-3606', rec 49' same.  
Cored 3606-30', rec 24' same.

7-13-64 TD 3669', PBD 3659', tstg.  
Cored 3630-69', rec 39' dolo. & sd., w/scatt.  
shows.  
Perf 3646-50' W/2 SPF  
Ac. 1000 gals.  
Flwd 144 BO + 47.5 BW/24 hrs thru 24/64" chk.,  
TP 35-75#.

7-20-64 TD 3669', PBD 3659', COMPLETED.