

HAL J. RASMUSSEN OPERATING, INC.

SIX DESTA DRIVE, SUITE 5850

MIDLAND, TEXAS 79705

(915) 687-1664

July 25, 1990

~~Mr. William J. LeMay, Director
New Mexico Oil Conservation Division
P. O. Box 2088
Sante Fe, New Mexico 87501~~

RE: Administrative Approval of an Unorthodox Well Location
State "A" a/c 1 # 106
Jalmat Gas Pool
Lea County, New Mexico

Dear Mr. LeMay,

Hal J. Rasmussen Operating Inc. respectfully requests administrative approval to recomplete the State A a/c 1 # 106 at an unorthodox well location, located 660 ft FNL and 660 ft FEL of Section 13, T23S R36E, Lea County, New Mexico. The State "A" a/c 1 # 106 is currently TA'd in the Langlie Mattix Pool.

The offset operators have been notified of this application by certified mail. Copies of the return receipts will be forwarded when received. Attached is a plat showing the location of the State "A" a/c 1 # 106, and the proration unit the well will be included in. A list of offset operators has also been attached.

If you need any further information regarding this request, please call me at (915) 687-1664.

Thank-you for your consideration.

Sincerely,



Jay Cherski

✓ CC: New Mexico Oil Conservation Division District 1 Office
P.O. Box 1980
Hobbs, New Mexico 88240

Submit to Appropriate
District Office
State Lease - 4 copies
Fee Lease - 3 copies

State of New Mexico
Energy, Minerals and Natural Resources Department

Form C-102
Revised 1-1-89

OIL CONSERVATION DIVISION

DISTRICT I
P.O. Box 1980, Hobbs, NM 88240

P.O. Box 2088

Santa Fe, New Mexico 87504-2088

DISTRICT II
P.O. Drawer DD, Artesia, NM 88210

DISTRICT III
1000 Rio Brazos Rd., Aztec, NM 87410

WELL LOCATION AND ACREAGE DEDICATION PLAT

All Distances must be from the outer boundaries of the section

Operator Hal J. Rasmussen Operating, Inc.			Lease STATE "A" NLC 1		Well No. 106
Unit Letter A	Section 13	Township 23S	Range 36E	County Lea	
Actual Footage Location of Well: 660 feet from the NORTH line and 660 feet from the WEST line					
Ground level Elev.		Producing Formation VATES	Pool Jalmat-TNSL-YTS-7R		Dedicated Acreage: 640 Acres

1. Outline the acreage dedicated to the subject well by colored pencil or hatchure marks on the plat below.

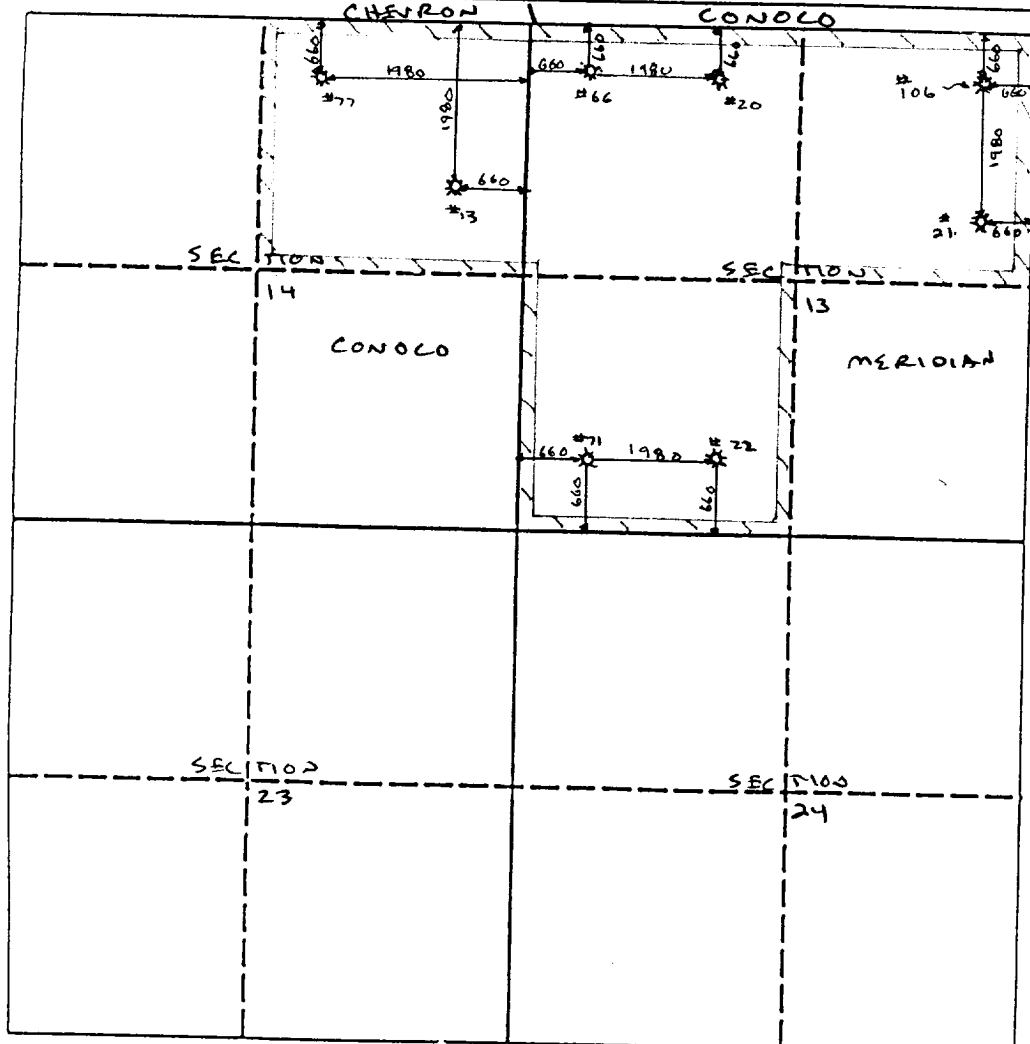
2. If more than one lease is dedicated to the well, outline each and identify the ownership thereof (both as to working interest and royalty).

3. If more than one lease of different ownership is dedicated to the well, have the interest of all owners been consolidated by communitization, unitization, force-pooling, etc.?

☐ Yes ☐ No If answer is "yes" type of consolidation

If answer is "no" list the owners and tract descriptions which have actually been consolidated. (Use reverse side of this form if necessary.)

No allowable will be assigned to the well until all interests have been consolidated (by communitization, unitization, forced-pooling, or otherwise) or until a non-standard unit, eliminating such interest, has been approved by the Division.



OPERATOR CERTIFICATION

I hereby certify that the information contained herein is true and complete to the best of my knowledge and belief.

Signature

Printed Name

Jay D. Cherski

Position

Agent

Company

Hal J. Rasmussen Operating, Inc.

Date

7/26/90

SURVEYOR CERTIFICATION

I hereby certify that the well location shown on this plat was plotted from field notes of actual surveys made by me or under my supervision, and that the same is true and correct to the best of my knowledge and belief.

Date Surveyed

Signature & Seal of
Professional Surveyor

Certificate No.