

COPY TO UNITED STATES  
DEPARTMENT OF THE INTERIOR  
GEOLOGICAL SURVEY

## APPLICATION FOR PERMIT TO DRILL, DEEPEN OR PLUG BACK

## 1a. TYPE OF WORK

DRILL ☐DEEPEN ☐PLUG BACK ☒

## b. TYPE OF WELL

OIL  
WELL ☒GAS  
WELL ☐OTHER ☐

## 2. NAME OF OPERATOR

TEXACO Inc.

## 3. ADDRESS OF OPERATOR

P. O. Box 728, Hobbs, New Mexico 88240

## 4. LOCATION OF WELL (Report location clearly and in accordance with any State requirements.)\*

At surface well located 660' from the South Line and 1980' from the  
West line of Sec. 20, T-22-S, R-38-E, Unit Letter N, Lea County,  
New Mexico  
At proposed prod. zone

## 14. DISTANCE IN MILES AND DIRECTION FROM NEAREST TOWN OR POST OFFICE\*

7 miles Southeast of Eunice, New Mexico

## 15. DISTANCE FROM PROPOSED\*

LOCATION TO NEAREST  
PROPERTY OR LEASE LINE, FT.  
(Also to nearest drlg. unit line, if any)

660'

## 16. NO. OF ACRES IN LEASE

1855.12

17. NO. OF ACRES ASSIGNED  
TO THIS WELL

40

## 18. DISTANCE FROM PROPOSED LOCATION\*

TO NEAREST WELL, DRILLING, COMPLETED,  
OR APPLIED FOR, ON THIS LEASE, FT.

1320'

## 19. PROPOSED DEPTH

TD 7100'

## 20. ROTARY OR CABLE TOOLS

Workover

## 21. ELEVATIONS (Show whether DF, RT, GR, etc.)

3400' (DF)

## 22. APPROX. DATE WORK WILL START\*

February 15, 1970

## 23.

## PROPOSED CASING AND CEMENTING PROGRAM

SIZE OF HOLE	SIZE OF CASING	WEIGHT PER FOOT	SETTING DEPTH	QUANTITY OF CEMENT
11"	7-5/8"	15.28	1336'	650 sx.
Bli. 6-3/4"	2-7/8"	6.50	7089'	600 sx.
Drk. 6-3/4"	2-7/8"	6.50	7100'	600 sx.

TEXACO Inc. proposes to set CIBP in Blinebry and recompleat in Brunson  
San Andres East.

1. Pull rods and pump.
2. Set Cast Iron Bridge Plug in Blinebry String @4750'. Dump 6' Hydromite on plug.
3. Perforate 2-7/8" w/1 JSPI @4353, 4358; 1 JSPF from 4361 to 4365; 1 JSPI @4373, 4393;  
1 JSPF from 4406 to 4416; 4420 to 4436; 1 JSPI @4441 and 1 JSPF from 4455 to 4467'.
4. Acidize w/3000 gals' 15% NCL in 4 stages using 50 5/8" ball sealers at equal intervals.
5. Run pump, rods, test and place San Andres on Production.

IN ABOVE SPACE DESCRIBE PROPOSED PROGRAM: If proposal is to deepen or plug back, give data on present productive zone and proposed new productive zone. If proposal is to drill or deepen directionally, give pertinent data on subsurface locations and measured and true vertical depths. Give blowout preventer program, if any.

24.

SIGNED

TITLE

Assistant District  
Superintendent

DATE January 27, 1970

(This space for Federal or State office use)

PERMIT NO.

APPROVAL DATE

APPROVED BY

TITLE

CONDITIONS OF APPROVAL, IF ANY:

APPROVED

JAN 28 1970  
ARTHUR R. BROWN  
DISTRICT ENGINEER

\*See Instructions On Reverse Side

NEW MEXICO OIL CONSERVATION COMMISSION  
WELL LOCATION AND ACREAGE DEDICATION PLAT

Form C-102  
Supersedes C-128  
Effective 1-1-65

All distances must be from the outer boundaries of the Section.

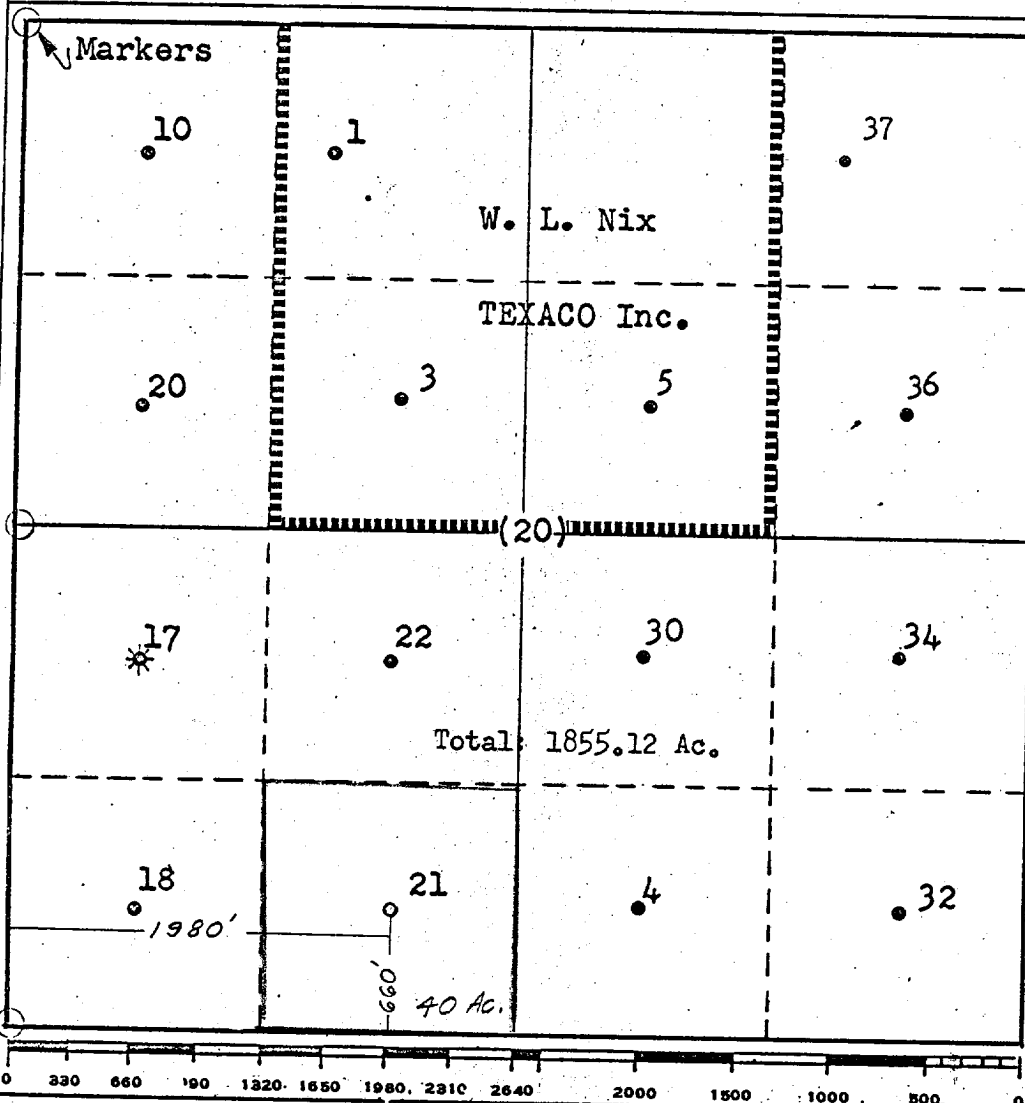
Operator <b>TEXACO Inc.</b>		Lease <b>A. H. Blinbry NCT-1 Fed.</b>		Well No. <b>21</b>
Unit Letter <b>N</b>	Section <b>20</b>	Township <b>22 South</b>	Range <b>38 East</b>	County <b>Lea</b>
Actual Footage Location of Well: <b>660</b> feet from the <b>South</b> line and <b>1980</b> feet from the <b>West</b> line <b>Sec. 20</b>				
Ground Level Elev: <b>3380</b>	Producing Formation <b>San Andres</b>	Pool <b>East Brunson-San Andres</b>	Dedicated Acreage: <b>40</b> Acres	

1. Outline the acreage dedicated to the subject well by colored pencil or hachure marks on the plat below.
2. If more than one lease is dedicated to the well, outline each and identify the ownership thereof (both as to working interest and royalty).
3. If more than one lease of different ownership is dedicated to the well, have the interests of all owners been consolidated by communitization, unitization, force-pooling, etc?

☐ Yes ☐ No If answer is "yes," type of consolidation \_\_\_\_\_

If answer is "no," list the owners and tract descriptions which have actually been consolidated. (Use reverse side of this form if necessary.) \_\_\_\_\_

No allowable will be assigned to the well until all interests have been consolidated (by communitization, unitization, forced-pooling, or otherwise) or until a non-standard unit, eliminating such interests, has been approved by the Commission.



CERTIFICATION	
I hereby certify that the information contained herein is true and complete to the best of my knowledge and belief.	
Name	<b>J. J. Velten</b>
Position	<b>Division Civil Engineer</b>
Company	<b>TEXACO Inc.</b>
Date	<b>1/27/70</b>
I hereby certify that the well location shown on this plat was plotted from field notes of actual surveys made by me or under my supervision, and that the same is true and correct to the best of my knowledge and belief.	
Date Surveyed	<b>10/31/64</b>
Registered Professional Engineer and/or Land Surveyor	<b>J. J. Velten</b>
Certificate No.	<b>8174</b>