

NUMBER OF COPIES RECEIVED	
DISTRIBUTION	
SANTA FE	
FILE	
U.S.G.S.	
LAND OFFICE	
TRANSPORTER	OIL GAS
PRORATION OFFICE	
OPERATOR	

NEW MEXICO OIL CONSERVATION COMMISSION  
Santa Fe, New Mexico

Form C-101  
Revised (12/1/55)

NOTICE OF INTENTION TO DRILL

Notice must be given to the District Office of the Oil Conservation Commission and approval obtained before drilling or recompletion begins. If changes in the proposed plan are considered advisable, a copy of this notice showing such changes will be returned to the sender. Submit this notice in QUINTUPLICATE. One copy will be returned following approval. See additional instructions in Rules and Regulations of the Commission. If State Land submit 6 Copies Attach Form C- 128 in triplicate to first 3 copies of form C-101

Hobbs, New Mexico  
(Place)

September 15, 1964  
(Date)

OIL CONSERVATION COMMISSION  
SANTA FE, NEW MEXICO

Gentlemen:

You are hereby notified that it is our intention to commence the Drilling of a well to be known as

Texas Pacific Oil Company

(Company, or Operator)

State "NM" A/C-1  
(Lease)

Well No. 110

in H

(Unit)

located 550 feet from the East line and 1980 feet from the

North line of Section 13, T. 23-S, R. 36-E, NMPM.

(GIVE LOCATION FROM SECTION LINE) Langlie Mattix Pool, Lea County

If State Land the Oil and Gas Lease is No. A-983

If patented land the owner is

Address

We propose to drill well with drilling equipment as follows: Rotary Rig

The status of plugging bond is Required bond on file.

Drilling Contractor FWA Drilling Company

We intend to complete this well in the Queens

formation at an approximate depth of 3675 feet.

CASING PROGRAM

We propose to use the following strings of Casing and to cement them as indicated:

Size of Hole	Size of Casing	Weight per Foot	New or Second Hand	Depth	Sacks Cement
11"	7-5/8"	24#	New	350'	Circulated
6-3/4"	4-1/2"	9.50#	New	3675'	200' into salt

If changes in the above plans become advisable we will notify you immediately.

ADDITIONAL INFORMATION (If recompletion give full details of proposed plan of work.)

Approved SEP 15, 1964  
Except as follows:

Sincerely yours,

TEXAS PACIFIC OIL COMPANY

By [Signature]

Position District Superintendent  
Send Communications regarding well to

Name Texas Pacific Oil Company

Address P. O. Box 1069, Hobbs, New Mexico

OIL CONSERVATION COMMISSION

By [Signature]

NEW MEXICO OIL CONSERVATION COMMISSION  
WELL LOCATION AND ACREAGE DEDICATION PLAT

FORM C-128  
Revised 5/1/57

SEE INSTRUCTIONS FOR COMPLETING THIS FORM ON THE REVERSE SIDE

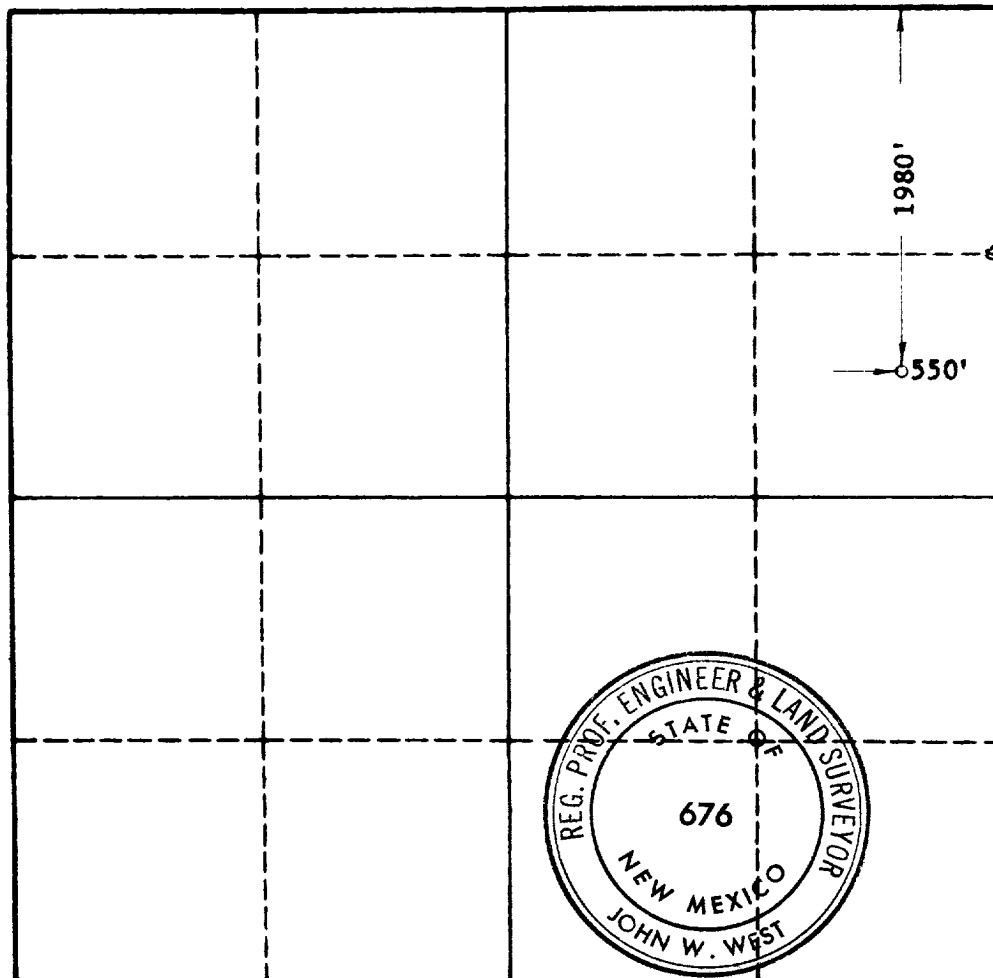
SECTION A

Operator TEXAS PACIFIC OIL CO.		Lease NEW MEXICO STATE "A" A/1		Well No. 110
Unit Letter H	Section 13	Township 23 SOUTH	Range 36 EAST	County LEA
Actual Footage Location of Well: 550 feet from the EAST line and 1980 feet from the NORTH line				
Ground Level Elev. 3376.6	Producing Formation Queen	Pool Long-Mettix	Dedicated Acreage: 40 Acres	

1. Is the Operator the only owner in the dedicated acreage outlined on the plat below? YES ☒ NO \_\_\_\_ ("Owner" means the person who has the right to drill into and to produce from any pool and to appropriate the production either for himself or for himself and another (65-3-29 (e) NMSA 1935 Comp.)
2. If the answer to question one is "no," have the interests of all the owners been consolidated by communitization agreement or otherwise? YES \_\_\_\_ NO \_\_\_\_ . If answer is "yes," Type of Consolidation \_\_\_\_
3. If the answer to question two is "no," list all the owners and their respective interests below:

Owner	Land Description

SECTION B



CERTIFICATION

I hereby certify that the information in SECTION A above is true and complete to the best of my knowledge and belief.

Name John W. West  
Position Asst. Supt.  
Company Texas Pacific Oil Co.  
Date 9-14-64

I hereby certify that the well location shown on the plat in SECTION B was plotted from field notes of actual surveys made by me or under my supervision, and that the same is true and correct to the best of my knowledge and belief.

Date Surveyed  
9-9-1964  
Registered Professional Engineer  
and/or Land Surveyor, JOHN W. WEST  
John W. West  
Certificate No.  
N. M. - P. E. & L. S. NO. 676

0 330 660 990 1320 1650 1980 2310 2640 2000 1600 1200 800 500 0

