

District I - (505) 393-6161
P.O. Box 1980
Hobbs, NM 88241-1980
District II - (505) 748-1283
811 S. First
Artesia, NM 88210
District III - (505) 334-6178
1000 Rio Brazos Road
Aztec, NM 87410
District IV

New Mexico
Energy, Minerals and Natural Resources Department
Oil Conservation Division
2040 South Pacheco Street
Santa Fe, New Mexico 87505
(505) 827-7131

Form C-140
Originated 11/1/95

Submit Original
Plus 2 Copies
to appropriate
District Office

H-0310 8/3

APPLICATION FOR
QUALIFICATION OF WELL WORKOVER PROJECT
AND CERTIFICATION OF APPROVAL

THREE COPIES OF THIS APPLICATION AND ALL ATTACHMENTS MUST BE FILED WITH THE APPROPRIATE DISTRICT OFFICE OF THE OIL CONSERVATION DIVISION.

- I. Operator: Citation Oil & Gas Corp. OGRID #: 004537
Address: 8223 Willow Place South, Suite 250, Houston, Texas 77070-5623
Contact Party: Debra Harris Phone: (281) 469-9664
- II. Name of Well: Antelope Ridge #3 API #: 30-025-21082
Location of Well: Unit Letter K, 1980 Feet from the South line and 1650 feet from the West line,
Section 34, Township 23S, Range 34E, NMPM, Lea County
- III. Date Workover Procedures Commenced: 4/15/97
Date Workover Procedures were Completed: 5/1/97
- IV. Attach a description of the Workover Procedures undertaken to increase the projection from the Well.
(From C-103 Attached)
- V. Attach an estimate of the production rate of the Well (a production decline curve or other acceptable method, and table showing monthly oil and/or gas Project Production) based on at least twelve (12) months of established production which shows the future rate of production based on well performance prior to performing Workover.

- VI. Pool(s) on which Production Projection is based:

Morrow - 12,838' - 12,959'

- VII. AFFIDAVIT:

State of Texas)
) ss.
County of Harris)

Debra Harris, being first duly sworn, upon oath states:

1. I am the Operator or authorized representative of the Operator of the above referenced Well.
2. I have made, or caused to be made, a diligent search of the production records which are reasonably available and contain information relevant to the production history of this Well.
3. To the best of my knowledge, the data used to prepare the Production Projection for this Well is complete and accurate and this projection was prepared using sound petroleum engineering practices.

(Name)

Debra Harris

(Title)

Regulatory Analyst

myo

SUBSCRIBED AND SWORN TO before me this 2nd day of May, 1997

Renee Harrell

Notary Public

My Commission expires: 3-2-99



FOR OIL CONSERVATION DIVISION USE ONLY:

VIII. CERTIFICATION OF APPROVAL:

This Application for Qualification of Well Workover Project is hereby approved and the above referenced Well is designated as a Well Workover Project pursuant to the "Natural Gas and Crude Oil Production Incentive Act" (Laws 1995, Chapter 15, Sections 1 through 8). The Oil Conservation Division hereby verifies the Production Projection for the Well Workover Project attached to this application. By copy of this Application and Certification of Approval, the Division notifies the Secretary of the Taxation and Revenue Department of this Approval and certifies that this Well Workover Project has been completed as of 5-1-97.

[Signature]
District Supervisor, District 1
Oil Conservation Division

Date: 7 Oct 97

IX. DATE OF NOTIFICATION TO THE SECRETARY OF THE TAXATION AND REVENUE DEPARTMENT.

DATE: _____

OIL CONSERVATION DIVISION

DISTRICT I

P.O. Box 1980, Hobbs, NM 88240

DISTRICT II

P.O. Drawer DD, Artesia, NM 88210

DISTRICT III

1000 Rio Brazos Rd., Aztec, NM 87410

2040 Pacheco St.
Santa Fe, NM 87505

WELL API NO.

30-025-21082

5. Indicate Type of Lease

STATE ☒ FEE ☐

6. State Oil & Gas Lease No.

E-8078

SUNDRY NOTICES AND REPORTS ON WELLS
(DO NOT USE THIS FORM FOR PROPOSALS TO DRILL OR TO DEEPEN OR PLUG BACK TO A
DIFFERENT RESERVOIR. USE "APPLICATION FOR PERMIT"
(FORM C-101) FOR SUCH PROPOSALS.)

1. Type of Well:

OIL WELL ☐

GAS WELL ☒

OTHER

2. Name of Operator

Citation Oil & Gas Corp.

3. Address of Operator

8223 Willow Place South, Suite 250, Houston, Texas 77070-5623

4. Well Location

Unit Letter **K** : **1980'** Feet From The **South** Line and **1650'** Feet From The **West** Line

Section **34** Township **23S** Range **34E** NMPM **Lea** County

10. Elevation (Show whether DF, RKB, RT, GR, etc)

3490' DF

7. Lease Name or Unit Agreement Name

Antelope Ridge Unit

8. Well No.

3

9. Pool name or Wildcat

Antelope Ridge Devonian

11. Check Appropriate Box to Indicate Nature of Notice, Report, or Other Data

NOTICE OF INTENTION TO:

PERFORM REMEDIAL WORK ☐

PLUG AND ABANDON ☐

TEMPORARILY ABANDON ☐

CHANGE PLANS ☐

PULL OR ALTER CASING ☐

OTHER: ☐

SUBSEQUENT REPORT OF:

REMEDIAL WORK ☒ ALTERING CASING ☐

COMMENCE DRILLING OPNS. ☐ PLUG AND ABANDONMENT ☐

CASING TEST AND CEMENT JOB ☐

OTHER: ☐

12. Describe Proposed or Completed Operations (Clearly state all pertinent details, and give pertinent dates, including estimated date of starting any proposed work) SEE RULE 1103.

4/15/97, bled off csg/tbg, pmp'd 4 BW dn tbg, 300 BW dn ann. ND 11"10M WHF & tree/NU 5M# BOP. Ran freept, RIH, cut tbg @14,265'. POH w/ 2-7/8" tbg & 8 GLV's to 3070'. Dmp'd 35' "H" cmt 14,230'-265' in 4-1/2" lnr. RIH w/6" bit & 6 4-1/8" DC's on 431 jts 2-7/8" tbg to 13,714' TOL. Set CIPB @13,708', RIH w/7" pkr & SN on tbg; pkr @6009', tst'd 7" lnr surf - 6009' (600#); pkr @8211', tst'd 7" lnr 8211' - 13709' CIBP to 700#; loaded ann, pkr @8211, PIR w/3 bpm @150# - sg; pkr @13,660', tst'd CIBP @13,708' to 3000#. Circ'd hole, w/pkr @12,966' w'/275 gals R-2264, 25 gals clay stab, 10 gals defoam; spot'd 350 gals 10% acid 12,735'-966'. POH to 12,714', RIH with 4-1/2" WL entry guide, "XN" nipple, tbg sub, "X" nipple, 5-1/2" mill-out ext & 7" BWB pkr on WL; pkr @12,725' (top), "X" nipple @12,744', "XN" nipple @12,755' & re-entry guide btm'd @12,756'. RIH w/muleshoe guide, seal assy & 4" J-latch loc sub on 404 jts 2-7/8" tbg to 12,711'; tst'd tbg to 7500#. ND BOP; spaced out, instl'd 10M# tree on tbg. Instl'd wrap-around in WH; latched into pkr @12,725'. Landed tree; NU 11"10M flange; flowline & swab'd FL dn tbg, surf - 3700'. Perf'd Morrow "A" & "B": 12,838'-846'; 12,090'-915' & 12,948'-959'. Swabd - SFL 3000'; FFL 11,200'. Loaded tbg w/3% KCl wtr; loaded ann & 13-3/8" csg (via ann) w/50 BW. Press'd to 500#; PIR w/0.5 bpm @4900# w/3% KCl wtr. ISITP 4900#; 5 min 4450#. Swab'd perfs: SFL-surf; FFL 4500'. RU 1-1/4" CT & acid pmps. Acidized w/3000 gals 15% HCl w/40% meth; 1st stage: 1500 gals dn CT @12,959'; flushed acid dn 2-7/8" x 1-1/4" ann to top perf. 2nd stage - flush 2-7/8" tbg w/1500 gals w/3% KCl to 12,959'; Max P - 5600#; Min P - 5370#; AIR 2.3 bpm; ISIP 4731#; 15 min SIP 4345#. Selling to plant 5/1/97. 5/10/97 prod: 121 MCFPD; TP 70; 24/64" ck.

I hereby certify that the information above is true and complete to the best of my knowledge and belief.

SIGNATURE

Debra Harris

TITLE

Regulatory Analyst

DATE

5/21/97

TYPE OR PRINT NAME

Debra Harris

TELEPHONE NO.

(281) 469-9664

(This space for State Use)

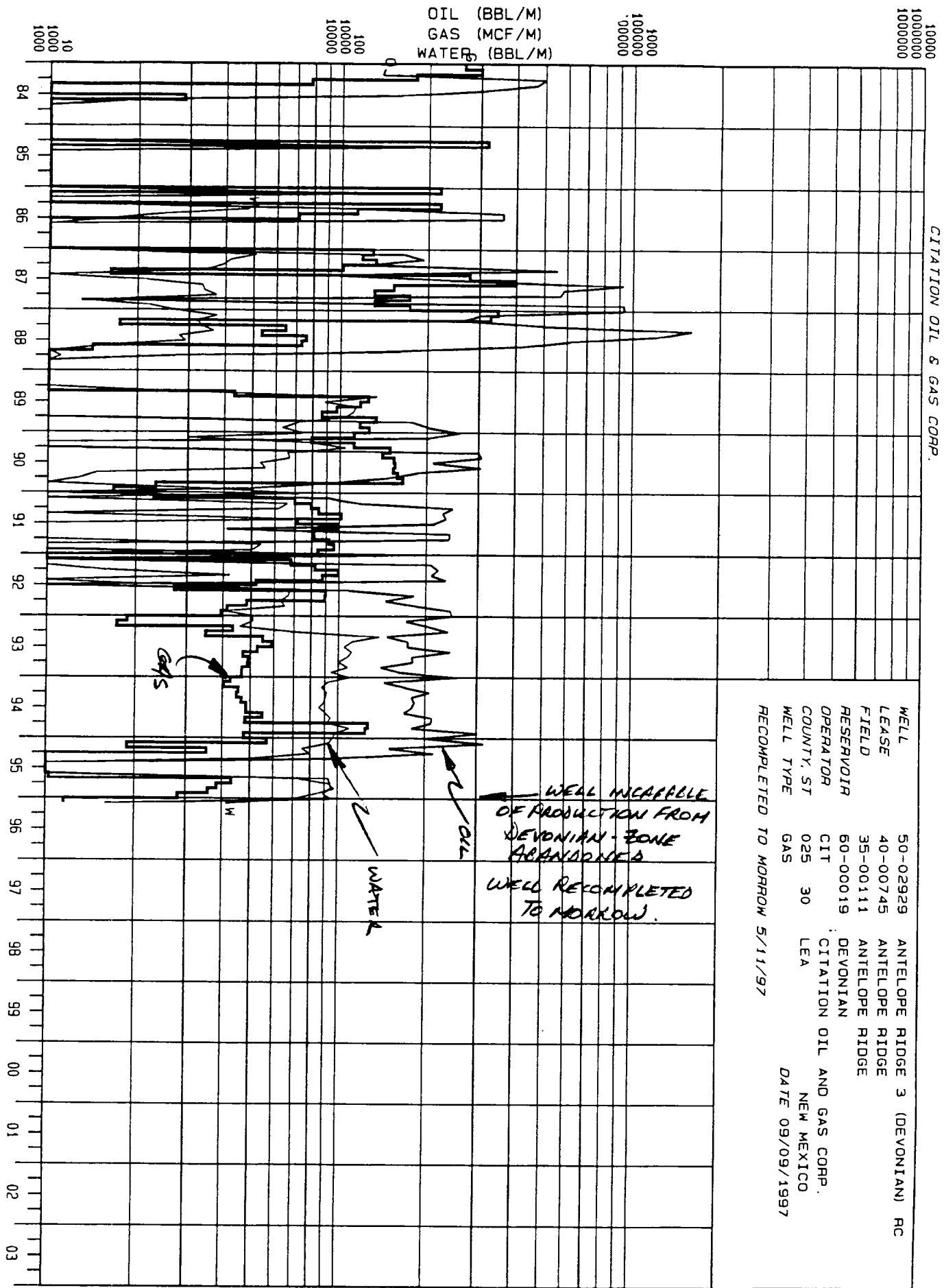
APPROVED BY

TITLE

DATE

CONDITIONS OF APPROVAL, IF ANY:

CITATION OIL & GAS CORP.



WELL 50-02929 ANTELOPE RIDGE 3 (DEVONIAN) RC
 LEASE 40-00745 ANTELOPE RIDGE
 FIELD 35-00111 ANTELOPE RIDGE
 RESERVOIR 60-00019 DEVONIAN
 OPERATOR CIT CITATION OIL AND GAS CORP.
 COUNTY, ST 025 30 LEA NEW MEXICO
 WELL TYPE GAS
 RECOMPLETED TO MORROW 5/11/97
 DATE 09/09/1997