

UNITED STATES
DEPARTMENT OF THE INTERIOR
GEOLOGICAL SURVEY

APPLICATION FOR PERMIT TO DRILL, DEEPEN, OR PLUG BACK

1a. TYPE OF WORK

DRILL ☒DEEPEN ☐PLUG BACK ☐

b. TYPE OF WELL

OIL
WELL ☒GAS
WELL ☐

OTHER

SINGLE
ZONE ☐MULTIPLE
ZONE ☒

2. NAME OF OPERATOR

Texaco Inc.

3. ADDRESS OF OPERATOR

P. O. Box 3109, Midland, Texas

4. LOCATION OF WELL (Report location clearly and in accordance with any State requirements.)*

At surface

660' FNL & 660' FWL, Section 28

At proposed prod. zone

14. DISTANCE IN MILES AND DIRECTION FROM NEAREST TOWN OR POST OFFICE*

7 miles Southeast of Eunice, New Mexico

15. DISTANCE FROM PROPOSED*

LOCATION TO NEAREST
PROPERTY OR LEASE LINE, FT.
(Also to nearest drlg. unit line, if any)

933'

18. DISTANCE FROM PROPOSED LOCATION*

TO NEAREST WELL, DRILLING, COMPLETED,
OR APPLIED FOR, ON THIS LEASE, FT.

1044'

16. NO. OF ACRES IN LEASE

1855.12

19. PROPOSED DEPTH

7350'

17. NO. OF ACRES ASSIGNED
TO THIS WELL

40

20. ROTARY OR CABLE TOOLS

Rotary

21. ELEVATIONS (Show whether DF, RT, GR, etc.)

Not available

22. APPROX. DATE WORK WILL START*

At once

23.

PROPOSED CASING AND CEMENTING PROGRAM

SIZE OF HOLE	SIZE OF CASING	WEIGHT PER FOOT	SETTING DEPTH	QUANTITY OF CEMENT
11"	8 5/8"	24#, 17.28#, 20#	1400'	530* 250% to circulate
7 7/8"	2 7/8" (H-Tubb)	6.5#	7350'	1060** 150% of vol. to base of salt
	2 7/8" (J-Drinkard)	6.5#	7350'	

*Cement 430 sx TLW, 110% wtr. 12.0#/gal followed by 100 sx Class "C" neat 14.8#/gal w/1% calcium chloride.

**Cement with 560 sx TLW 110% wtr. 12.0#/gal followed by 500 sx Incon 4% gel 13.86#/gal.
Use 0.5% FRA in first 260 sx. TLW.

COMPLETION PROGRAM

H-Tubb - 1. Selectively perf. pay with 1jspl. 2. Breakdown with acetic acid. 3. Acidize with 1500 gal. 15% NE acid in 5 stages using ball sealers. 4. Frac w/5000 gals. gelled lse. crude w/ 1/20# adomite per gal. followed by 10,000 gal gelled lse. crude w/ 1/40# adomite & 1# sd. per gal.

J-Drinkard - 1. Selectively perf. w/1jspl & breakdown with acetic acid. 2. Acidize with 10,000 gals 15% NE acid in 5 stages with ball sealers between stages.

FORMATION TOPS EXPECTED

Anhydrite 1367'
Base of Salt 2597'

Tubb 6355'
Total Depth 7350'

IN ABOVE SPACE DESCRIBE PROPOSED PROGRAM: If proposal is to deepen or plug back, give data on present productive zone and proposed new productive zone. If proposal is to drill or deepen directionally, give pertinent data on subsurface locations and measured and true vertical depths. Give blowout preventer program, if any.

24.

SIGNED

T. G. Landwermeyer

TITLE Civil Engineer

DATE 10/21/65

(This space for Federal or State office use)

PERMIT NO.

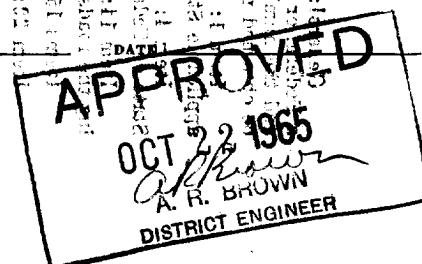
APPROVAL DATE

APPROVED BY

TITLE

CONDITIONS OF APPROVAL, IF ANY:

*See Instructions On Reverse Side



NEW TEXACO OIL CONSERVATION COMMISSION
WELL LOCATION AND ACREAGE DEDICATION PLAT

Form C-102
Supersedes C-128
Effective 1-1-65

All distances must be from the outer boundaries of the Section.

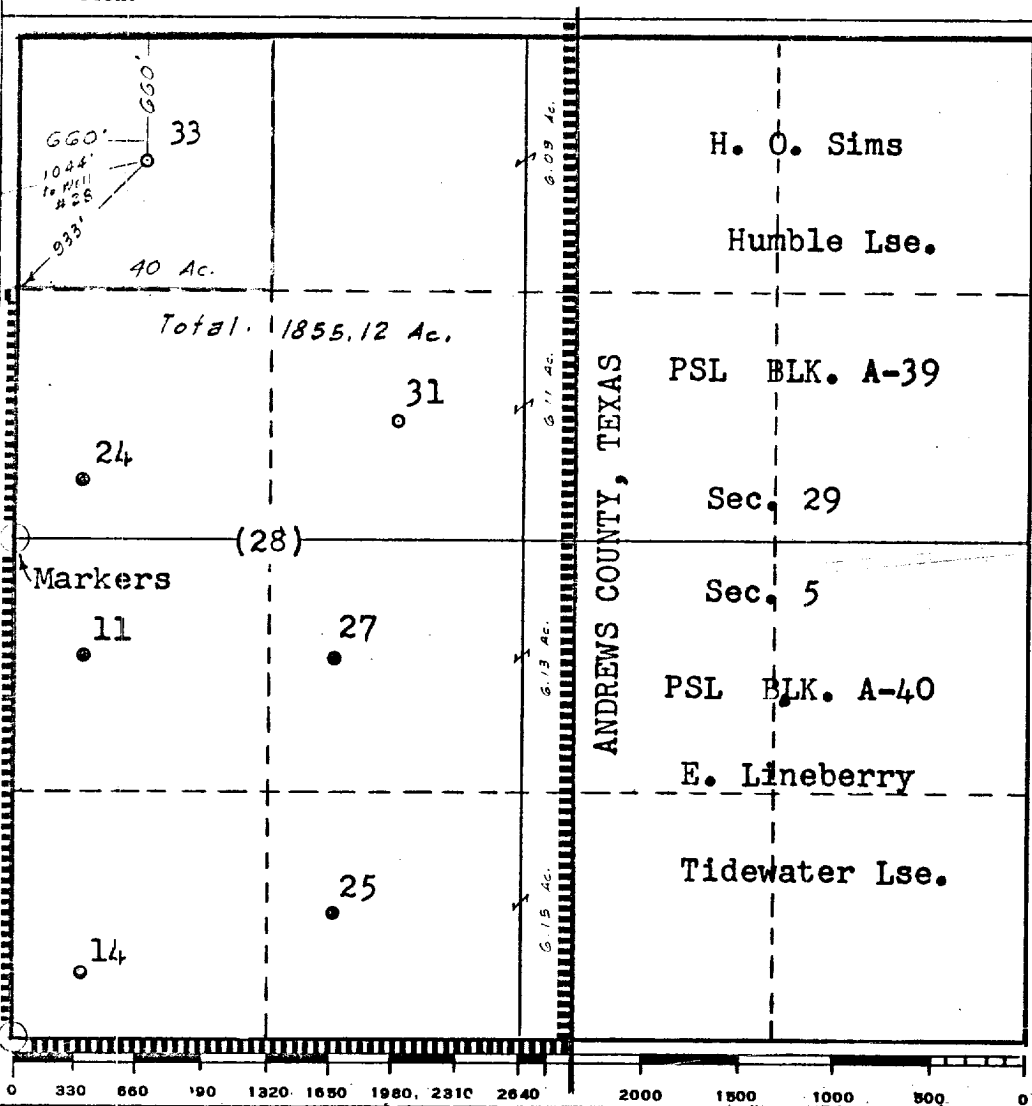
Operator TEXACO Inc.			Lease A. H. Blinebry NCT-11 Fed		Well No. 33
Unit Letter D	Section 28	Township 22 South	Range 38 East	County Lea	
Actual Footage Location of Well: 660 feet from the North line and 660 feet from the West line Sec. 28					
Ground Level Elev. Not Available	Producing Formation Tubb & Drinkard		Pool Tubb & Drinkard		Dedicated Acreage: 40 Acres

- Outline the acreage dedicated to the subject well by colored pencil or hachure marks on the plat below.
- If more than one lease is dedicated to the well, outline each and identify the ownership thereof (both as to working interest and royalty).
- If more than one lease of different ownership is dedicated to the well, have the interests of all owners been consolidated by communitization, unitization, force-pooling, etc?

☐ Yes ☐ No If answer is "yes," type of consolidation _____

If answer is "no," list the owners and tract descriptions which have actually been consolidated. (Use reverse side of this form if necessary.) _____

No allowable will be assigned to the well until all interests have been consolidated (by communitization, unitization, forced-pooling, or otherwise) or until a non-standard unit, eliminating such interests, has been approved by the Commission.



CERTIFICATION

I hereby certify that the information contained herein is true and complete to the best of my knowledge and belief.

Name *T. G. Landwermyer*

T. G. Landwermyer

Position
Civil Engineer

Company
TEXACO Inc.

Date
10/21/65

I hereby certify that the well location shown on this plat was plotted from field notes of actual surveys made by me or under my supervision, and that the same is true and correct to the best of my knowledge and belief.

Date Surveyed **10/20/65**

Registered Professional Engineer and/or Land Surveyor

T. G. Landwermyer
T. G. Landwermyer

Certificate No.
17617