

UNITED STATES
DEPARTMENT OF THE INTERIOR
GEOLOGICAL SURVEY

APPLICATION FOR PERMIT TO DRILL, DEEPEN, OR PLUG BACK

1a. TYPE OF WORK

DRILL ☒DEEPEN ☐PLUG BACK ☐

b. TYPE OF WELL

OIL
WELL ☒GAS
WELL ☐

OTHER

SINGLE
ZONE ☒MULTIPLE
ZONE ☐

2. NAME OF OPERATOR

Texaco Inc.

3. ADDRESS OF OPERATOR

P. O. Box 3109, Midland, Texas 79701

4. LOCATION OF WELL (Report location clearly and in accordance with any State requirements.)*

At surface

1980' FNL&660' FEL, Section 20
At proposed prod. zone

14. DISTANCE IN MILES AND DIRECTION FROM NEAREST TOWN OR POST OFFICE*

7 miles Southeast of Eunice, New Mexico

15. DISTANCE FROM PROPOSED*

LOCATION TO NEAREST

PROPERTY OR LEASE LINE, FT.

(Also to nearest drlg. unit line, if any)

660'

16. NO. OF ACRES IN LEASE

1855.12

17. NO. OF ACRES ASSIGNED
TO THIS WELL

40

18. DISTANCE FROM PROPOSED LOCATION*

TO NEAREST WELL, DRILLING, COMPLETED,
OR APPLIED FOR, ON THIS LEASE, FT.

1320'

19. PROPOSED DEPTH

7445'

20. ROTARY OR CABLE TOOLS

Rotary

21. ELEVATIONS (Show whether DF, RT, GR, etc.)

Not available

22. APPROX. DATE WORK WILL START*

At once

23.

PROPOSED CASING AND CEMENTING PROGRAM

SIZE OF HOLE	SIZE OF CASING	WEIGHT PER FOOT	SETTING DEPTH	QUANTITY OF CEMENT
11"	8 5/8"	24#, 17.28#, 20#	1400'	600* 250% to circulate
7 7/8"	2 7/8"	6.5#	7445'	800** 150% to base of salt

*Cement with 400 sx TLW 110% mix water 12.0#/gal. followed by 200 sx Class "C" neat with 1% calcium chloride (250% to circ.).

**Cement with 200 sx TLW 110% water 12.0#/gal. 0.5% FRA, 200 sx. TLW 110% water 12.0#/gal. 400 sx. Class C 4% gel 13.5#/gal. (150% to base of salt). Pump plug down with acetic acid.

COMPLETION PROGRAM

1. Selectively perforate with 1 jet shot per interval.
2. Break down with acetic acid.
3. Acidize with 10,000 gal. 15% NEA in 5 stages using ball sealers.

FORMATION TOPS EXPECTED

Anhydrite	1400'	Tubb	6445'
Base of Salt	2570'	Total Depth	7445'

IN ABOVE SPACE DESCRIBE PROPOSED PROGRAM: If proposal is to deepen or plug back, give data on present productive zone and proposed new productive zone. If proposal is to drill or deepen directionally, give pertinent data on subsurface locations and measured and true vertical depths. Give blowout preventer program, if any.

24.

SIGNED

J. J. Valten

TITLE

Division Civil Engineer

DATE

4/5/66

(This space for Federal or State office use)

PERMIT NO.

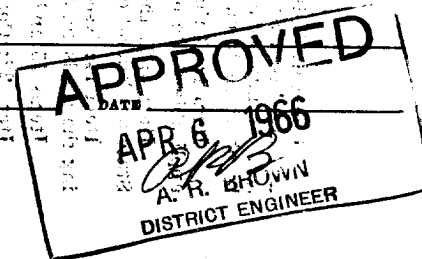
APPROVAL DATE

APPROVED BY

TITLE

CONDITIONS OF APPROVAL, IF ANY:

*See Instructions On Reverse Side



**NEW MEXICO OIL CONSERVATION COMMISSION
WELL LOCATION AND ACREAGE DEDICATION PLAT**

Form C-102
Supersedes C-128
Effective 1-1-65

All distances must be from the corner boundaries of the Section.
HOBBS OFFICE O. C. C.

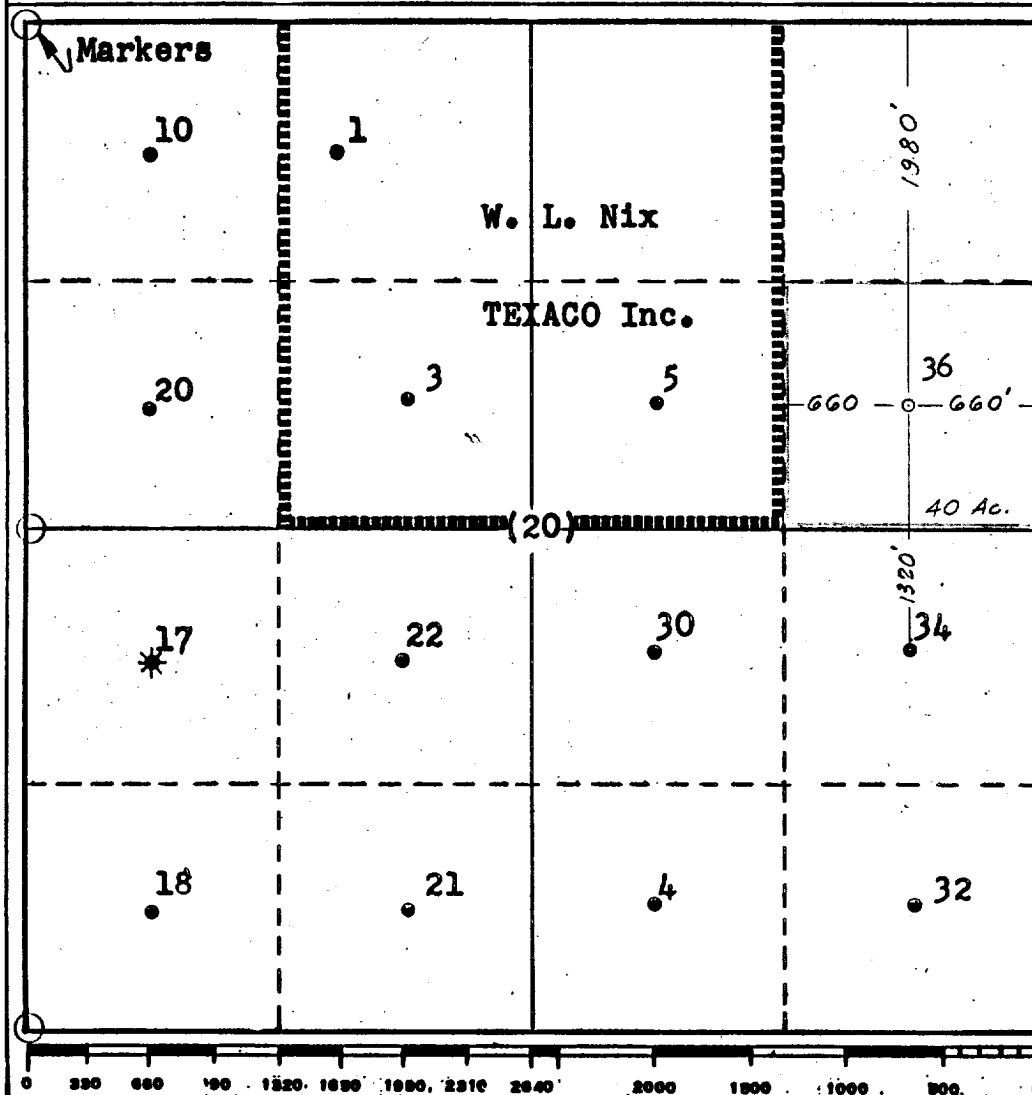
Operator TEXACO Inc.			Lease A-47-B-1-166T-1 Fed.		Well No. 36
Unit Letter H	Section 20	Township 22 South	Range 38 East	County Lea	
Actual Footage Location of Well: 1980 feet from the North line and 660 feet from the East line Sec. 20					
Ground Level Elev: Not Available	Producing Formation Abo		Pool Drinkard		Dedicated Acreage: 40 Acres

1. Outline the acreage dedicated to the subject well by colored pencil or hachure marks on the plat below.
2. If more than one lease is dedicated to the well, outline each and identify the ownership thereof (both as to working interest and royalty).
3. If more than one lease of different ownership is dedicated to the well, have the interests of all owners been consolidated by communitization, unitization, force-pooling, etc?

☐ Yes ☐ No If answer is "yes," type of consolidation _____

If answer is "no," list the owners and tract descriptions which have actually been consolidated. (Use reverse side of this form if necessary.) _____

No allowable will be assigned to the well until all interests have been consolidated (by communitization, unitization, forced-pooling, or otherwise) or until a non-standard unit, eliminating such interests, has been approved by the Commission.



CERTIFICATION

I hereby certify that the information contained herein is true and complete to the best of my knowledge and belief.

Name: **J. J. Velten**
Position: **Division Civil Engineer**
Company: **TEXACO Inc.**

Date: **4/5/66**

I hereby certify that the well location shown on this plat was plotted from field notes of actual surveys made by me or under my supervision, and that the same is true and correct to the best of my knowledge and belief.

Date Surveyed: **4/4/66**

Registered Professional Engineer and/or Land Surveyor

J. J. Velten

Certificate No. **8174**