

NEW MEXICO OIL CONSERVATION COMMISSION
WELL LOCATION AND ACREAGE DEDICATION PLAT

Form C-102
Supersedes C-128
Effective 1-1-65

All distances must be from the outer boundaries of the Section.

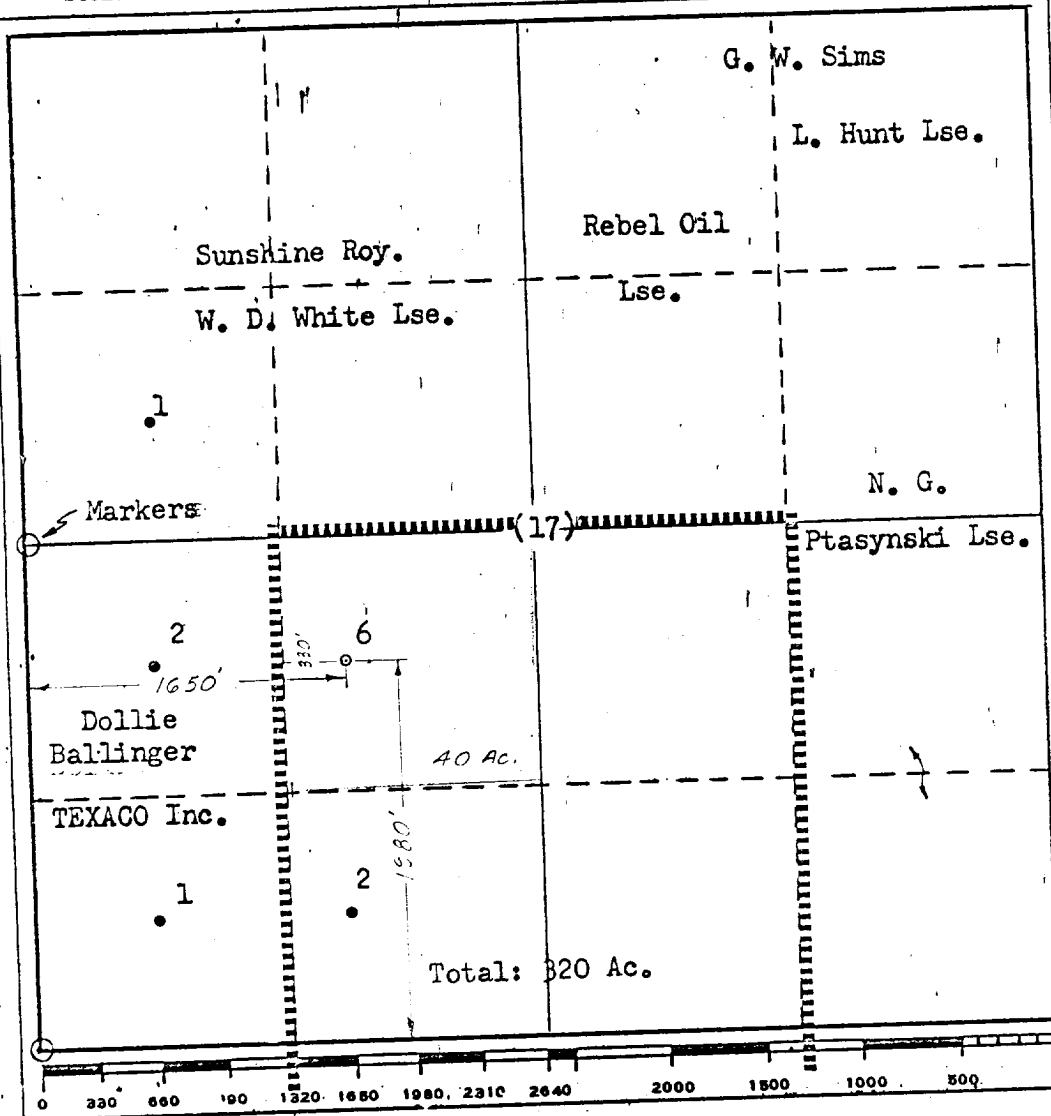
Operator TEXACO Inc.		Lease MAY 13 1966		Well No. 6
Unit Letter K	Section 17	Township 22 South	Range 38 East	County Lea
Actual Footage Location of Well: -1980 feet from the South line and 1650 feet from the West line Sec. 17				
Ground Level Elev. Not Available	Producing Formation Drinkard	Pool Drinkard	Dedicated Acreage: 40 Acres	

1. Outline the acreage dedicated to the subject well by colored pencil or hachure marks on the plat below.
2. If more than one lease is dedicated to the well, outline each and identify the ownership thereof (both as to working interest and royalty).
3. If more than one lease of different ownership is dedicated to the well, have the interests of all owners been consolidated by communitization, unitization, force-pooling, etc?

☒ Yes ☐ No If answer is "yes," type of consolidation Unitization Agreement

If answer is "no," list the owners and tract descriptions which have actually been consolidated. (Use reverse side of this form if necessary.)

No allowable will be assigned to the well until all interests have been consolidated (by communitization, unitization, forced-pooling, or otherwise) or until a non-standard unit, eliminating such interests, has been approved by the Commission.



CERTIFICATION

I hereby certify that the information contained herein is true and complete to the best of my knowledge and belief.

Name
J. J. Velten
Position
Division Civil Engineer
Company
TEXACO Inc.

Date
5/20/66

I hereby certify that the well location shown on this plat was plotted from field notes of actual surveys made by me or under my supervision, and that the same is true and correct to the best of my knowledge and belief.

Date Surveyed
5/19/66

Registered Professional Engineer and/or Land Surveyor

Certificate No.
8174

COUNTY	11A	FIELD	Drinkard	STATE	NM
OPR	TEKACO INC.				MAP
	6 712, W. I.				
	Sec. 11, T-22-S, R-38-E				CO-ORD
	1980' FSL, 1650' FWL of Sec.				W 11786
	Spd 5-30-66				EL [REDACTED]
	Dnp 6-16-66				
CSG & SX - TUBING		FORMATION	DATUM	FORMATION	DATUM
1 5/8" 1400' 600					
2 7/8" 1300' 300					
LOGS EL GR RA IND HC A					
	TD 7300', PBD 7292'				

TP Drinkard Perfs 7056-7293' Flwd 420 BCPD. Pot. Based on 8 hr test of 140 BC thro 18/64" chn., CP 200#, Gravity 40.9, 10R 622.

Distribution limited and publication prohibited by subscribers' agreement.
Reproduction rights reserved by Williams & Lee Scouting Service, Inc.

CONT. Rod-Ric Drlg. Co.	PROP DEPTH 7300'	TYPE
DATE		

P.R. 5-26-66
 PD 7300' - Drinkard
 Contractor - Rod Ric
 5-31-66 TD 1400', prep to run casing.
 6-6-66 Drlg. 4196'.
 6-13-66 Drlg. 6037'.
 6-20-66 TD 7300', fishing drill pipe.
 6-27-66 TD 7300', PBD 7292', COMPLETE.
 Perf @ 7056', 7065', 7071', 7073', 7098',
 7114', 7133', 7137', 7141', 7145', 7159',
 7166', 7186', 7205', 7212', 7216', 7231',
 7235', 7250', 7260', 7267', 7273', 7285',
 7288', 7290', 7293' W/2 SPI
 Ac (7056-7293') 15,000 gals 15%; IR 7.5 BFM
 LOG TOPS: Yates 2778', San Andres 4240',
 Blinbry 5842', Tubb 6408', Abc 6925'.