

NEW MEXICO OIL CONSERVATION COMMISSION  
WELL LOCATION AND ACREAGE DEDICATION PLAT

All distances must be from the outer boundaries of the Section.

HOBBS OFFICE O. C. C.  
MAY 31 8 00 AM '67

Form C-102  
Supersedes C-128  
Effective 1-1-65

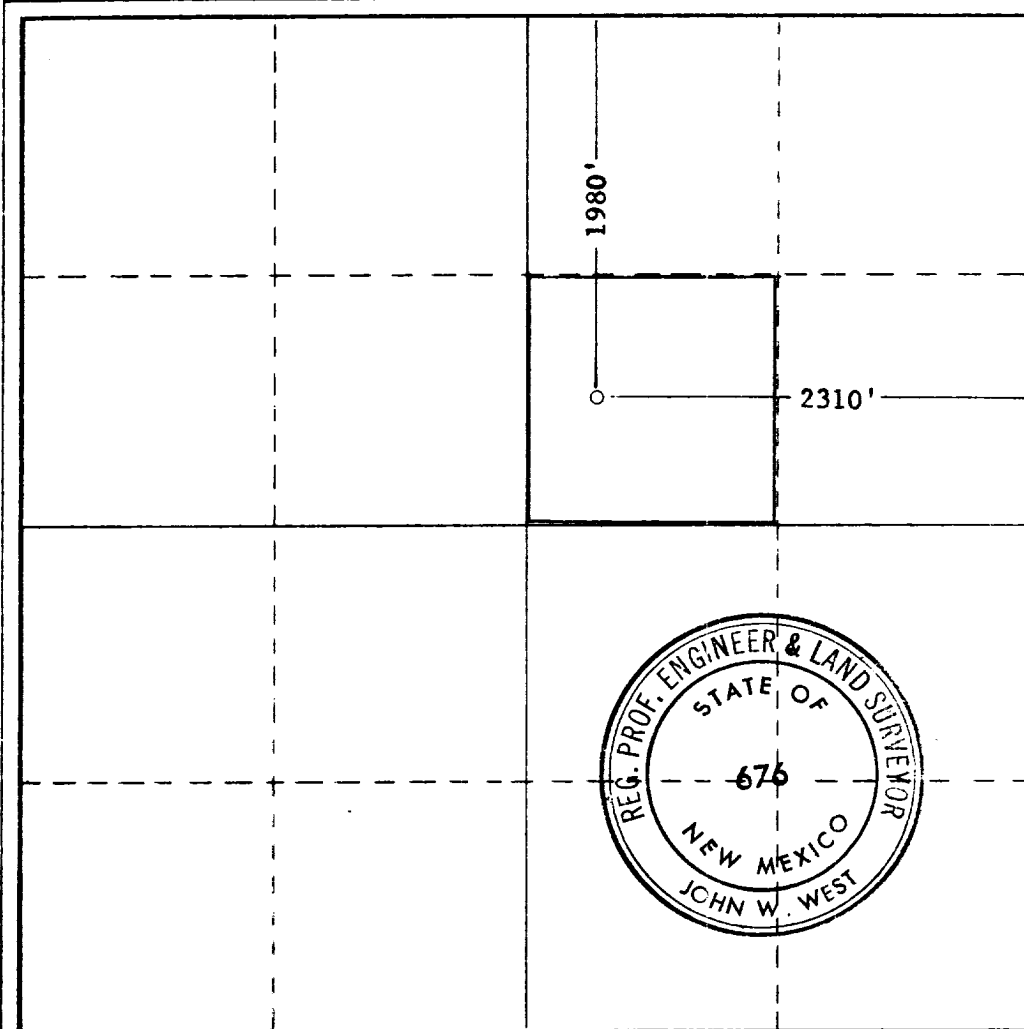
Operator <b>MILLARD DECK</b>			Lease <b>WORTHAM</b>			Section <b>11</b>			Township <b>22 SOUTH</b>			Range <b>37 EAST</b>			County <b>LEA</b>																																
Actual Footage Location of Well:																																															
1980						feet from the						NORTH						line and						2310						feet from the						EAST						line					
Ground Level Elev.						Producing Formation						Pool						Dedicated Acreage:						Acres																							
						<b>Grayburg</b>												<b>Penrose-Skelly</b>												<b>40</b>																	

1. Outline the acreage dedicated to the subject well by colored pencil or hatchure marks on the plat below.
2. If more than one lease is dedicated to the well, outline each and identify the ownership thereof (both as to working interest and royalty).
3. If more than one lease of different ownership is dedicated to the well, have the interests of all owners been consolidated by communitization, unitization, force-pooling, etc?

☐ Yes ☐ No If answer is "yes," type of consolidation \_\_\_\_\_

If answer is "no," list the owners and tract descriptions which have actually been consolidated. (Use reverse side of this form if necessary.) \_\_\_\_\_

No allowable will be assigned to the well until all interests have been consolidated (by communitization, unitization, forced-pooling, or otherwise) or until a non-standard unit, eliminating such interests, has been approved by the Commission.



CERTIFICATION

I hereby certify that the information contained herein is true and complete to the best of my knowledge and belief.

Name Millard Deck  
Position Owner - Operator  
Company Millard Deck  
Date May 29, 1967

I hereby certify that the well location shown on this plat was plotted from field notes of actual surveys made by me or under my supervision, and that the same is true and correct to the best of my knowledge and belief.

Date Surveyed 5/25/67  
Registered Professional Engineer and/or Land Surveyor  
John W. West  
Certificate No. 676

