

UNITED STATES  
DEPARTMENT OF THE INTERIOR  
GEOLOGICAL SURVEY

## APPLICATION FOR PERMIT TO DRILL, DEEPEN, OR PLUG BACK

## 1a. TYPE OF WORK

DRILL ☒DEEPEN ☐PLUG BACK ☐

## b. TYPE OF WELL

OIL  
WELL ☒GAS  
WELL ☐

OTHER

SINGLE  
ZONE ☐MULTIPLE  
ZONE ☒

## 2. NAME OF OPERATOR

SOLAR OIL COMPANY

## 3. ADDRESS OF OPERATOR

P. O. Box 5114, Midland, Texas

## 4. LOCATION OF WELL (Report location clearly and in accordance with any State requirements.)\*

At surface

660' FSL &amp; 660 FEL

At proposed prod. zone

660' FSL &amp; 660 FEL

## 14. DISTANCE IN MILES AND DIRECTION FROM NEAREST TOWN OR POST OFFICE\*

4-1/2 miles southeast of Eunice, New Mexico

15. DISTANCE FROM PROPOSED\*  
LOCATION TO NEAREST  
PROPERTY OR LEASE LINE, FT.  
(Also to nearest drlg. unit line, if any)

660'

18. DISTANCE FROM PROPOSED LOCATION\*  
TO NEAREST WELL, DRILLING, COMPLETED,  
OR APPLIED FOR, ON THIS LEASE, FT.

1st well

## 16. NO. OF ACRES IN LEASE

120

## 19. PROPOSED DEPTH

7400'

17. NO. OF ACRES ASSIGNED  
TO THIS WELL

40

## 20. ROTARY OR CABLE TOOLS

Rotary

## 21. ELEVATIONS (Show whether DF, RT, GR, etc.)

3400.6 GR

## 22. APPROX. DATE WORK WILL START\*

12-6-68

## 23.

## PROPOSED CASING AND CEMENTING PROGRAM

SIZE OF HOLE	SIZE OF CASING	WEIGHT PER FOOT	SETTING DEPTH	QUANTITY OF CEMENT
12-1/4"	9-5/8"	32.3#	850	325 sx Circ.
8-3/4"	7"	23# & 26#	7400'	550 sx Base of salt

It is proposed to drill a well to a depth sufficient to test the  
Abo, estimated at 7400'.

IN ABOVE SPACE DESCRIBE PROPOSED PROGRAM: If proposal is to deepen or plug back, give data on present productive zone and proposed new productive zone. If proposal is to drill or deepen directionally, give pertinent data on subsurface locations and measured and true vertical depths. Give blowout preventer program, if any.

24.

SIGNED

*M. J. Smith*

TITLE

Production Clerk

DATE

December 3, 1968

(This space for Federal or State office use)

PERMIT NO.

APPROVAL DATE

APPROVED BY

TITLE

DATE

CONDITIONS OF APPROVAL, IF ANY:

APPROVED  
DEC 5 1968  
A. R. BROWN  
DISTRICT ENGINEER

\*See Instructions On Reverse Side

**NEW MEXICO OIL CONSERVATION COMMISSION  
WELL LOCATION AND ACREAGE DEDICATION PLAT**

Form C-102  
Supersedes C-128  
Effective 1-1-65

All distances must be from the outer boundaries of the Section.

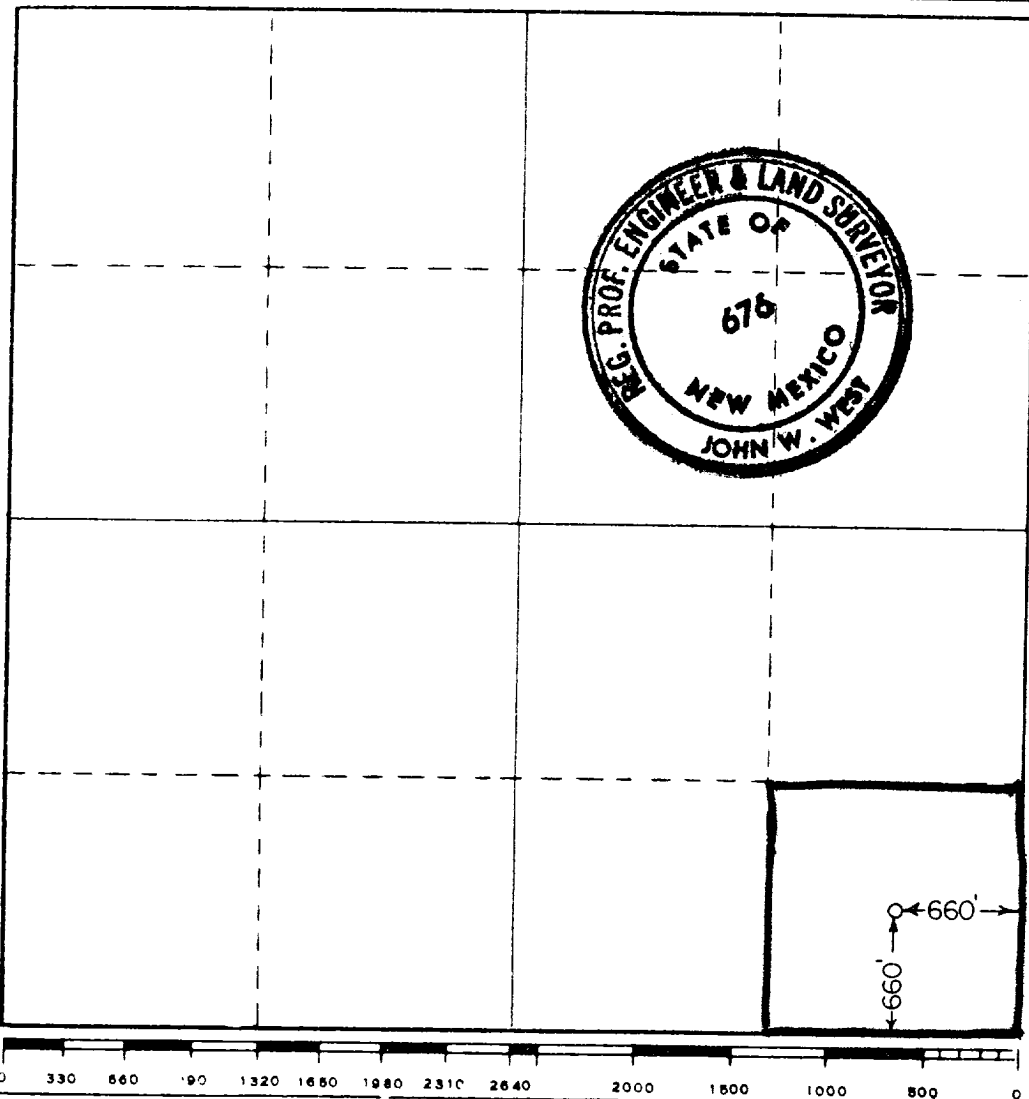
Operator <b>SOLAR OIL COMPANY</b>			Lease <b>SPEAR 17 FEDERAL</b>		Well No. <b>1</b>
Unit Letter <b>P</b>	Section <b>17</b>	Township <b>22 SOUTH</b>	Range <b>38 EAST</b>	County <b>LEA</b>	
Actual Footage Location of Well:					
<b>660</b> feet from the <b>SOUTH</b> line and		<b>660</b> feet from the <b>EAST</b> line			
Ground Level Elev. <b>3400.6</b>	Producing Formation <b>ABO</b>	Pool <b>UNDESIGNATED</b>		Dedicated Acreage: <b>SE 1/4 SE 1/4 40</b> Acres	

1. Outline the acreage dedicated to the subject well by colored pencil or hachure marks on the plat below.
2. If more than one lease is dedicated to the well, outline each and identify the ownership thereof (both as to working interest and royalty).
3. If more than one lease of different ownership is dedicated to the well, have the interests of all owners been consolidated by communitization, unitization, force-pooling, etc?

☐ Yes   ☐ No   If answer is "yes," type of consolidation \_\_\_\_\_

If answer is "no," list the owners and tract descriptions which have actually been consolidated. (Use reverse side of this form if necessary.) \_\_\_\_\_

No allowable will be assigned to the well until all interests have been consolidated (by communitization, unitization, forced-pooling, or otherwise) or until a non-standard unit, eliminating such interests, has been approved by the Commission.



**CERTIFICATION**

I hereby certify that the information contained herein is true and complete to the best of my knowledge and belief.

Name *M. J. Smith*  
 Position Production Clerk  
 Company Solar Oil Company  
 Date December 4, 1968

I hereby certify that the well location shown on this plat was plotted from field notes of actual surveys made by me or under my supervision, and that the same is true and correct to the best of my knowledge and belief.

Date Surveyed NOVEMBER 24, 1968  
 Registered Professional Engineer and/or Land Surveyor

*John W. West*  
 Certificate No. **676**