

N MEXICO OIL CONSERVATION COMMISS
WELL LOCATION AND ACREAGE DEDICATION PLAT

Form C-102
 Supersedes C-128
 Effective 1-1-65

All distances must be from the outer boundaries of the Section.

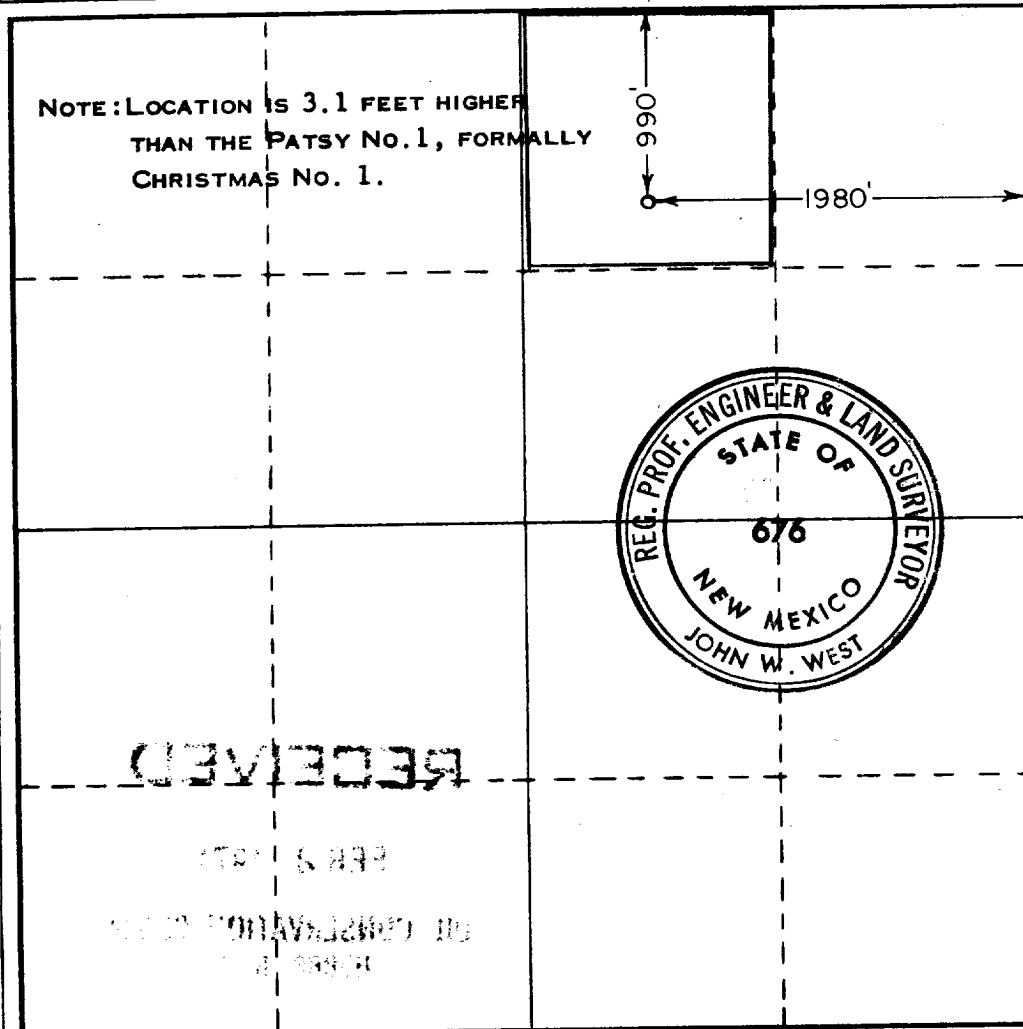
Operator MILLARD DECK			Lease PATSY		Well No. 2
Unit Letter B	Section 20	Township 22 SOUTH	Range 37 EAST	County LEA	
Actual Footage Location of Well: 990 feet from the NORTH line and 1980 feet from the EAST line					
Ground Level Elev. 3375	Producing Formation Queen	Pool Langlie Mattix	Dedicated Acreage: 40 Acres		

1. Outline the acreage dedicated to the subject well by colored pencil or hachure marks on the plat below.
2. If more than one lease is dedicated to the well, outline each and identify the ownership thereof (both as to working interest and royalty).
3. If more than one lease of different ownership is dedicated to the well, have the interests of all owners been consolidated by communitization, unitization, force-pooling, etc?

☐ Yes ☐ No If answer is "yes," type of consolidation _____

If answer is "no," list the owners and tract descriptions which have actually been consolidated. (Use reverse side of this form if necessary.) _____

No allowable will be assigned to the well until all interests have been consolidated (by communitization, unitization, forced-pooling, or otherwise) or until a non-standard unit, eliminating such interests, has been approved by the Commission.



CERTIFICATION

I hereby certify that the information contained herein is true and complete to the best of my knowledge and belief.

Millard Deck
 Name

Owner-Operator
 Position

Company

Date
February 23, 1971

I hereby certify that the well location shown on this plat was plotted from field notes of actual surveys made by me or under my supervision, and that the same is true and correct to the best of my knowledge and belief.

Date Surveyed
NOVEMBER 20, 1970

Registered Professional Engineer and/or Land Surveyor

John W. West
 Certificate No. **676**

RECEIVED

FEB 25 1971

**OIL CONSERVATION COMM.
HOBBS, N. M.**